

### ORDER THE EXPLANATION 訂購說明

CSE017 - 2N -  $\frac{3G}{\times 1}$  -  $\frac{A}{\times 2}$  \*  
 $\times 3$

#### ※1 Threaded Type 螺紋規格

1P: PT 2N: NPT 3G: PF(G) 4A: SAE 5B: BSP

#### ※2 Ports 接口

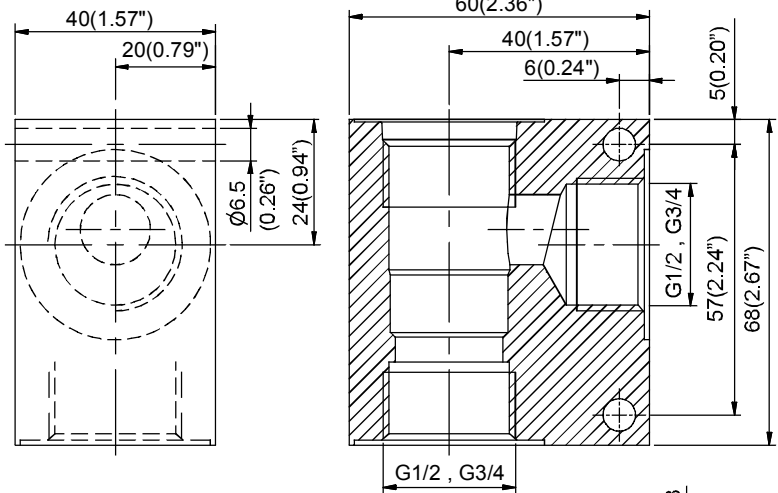
#### ※3 Body Material 閥體材質

NONE (Standard): Aluminum-alloy (Anodized) 無 (標準): 鋁合金(陽極處理)  
D: Nodular Ductile-Iron (Galvanization) D: 球墨鑄鐵(鍍鋅)  
S: Steel (Galvanization) S: 鋼質(鍍鋅)

### CAVITY 孔口 CSE017-2N

Dimensions on Page Appendixes-A 尺寸在附錄A頁面 001

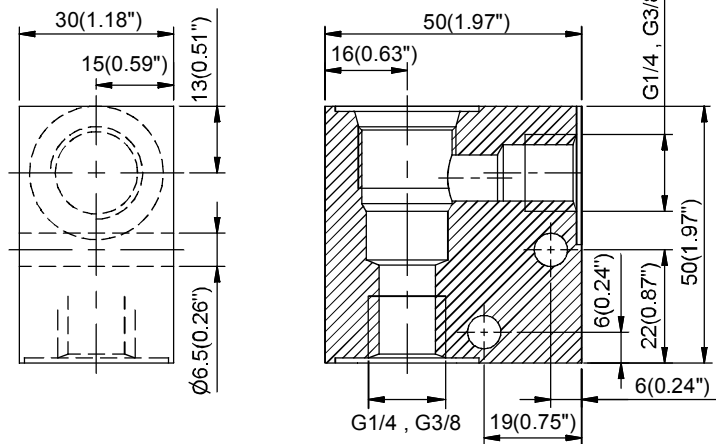
| ORDERING CODE<br>訂購代號 | Ports<br>接口 | Weight<br>重量 Kg(lbs) |
|-----------------------|-------------|----------------------|
| CSE017-2N-3G-A        | G 1/2       | 0.42<br>(0.93 lbs)   |
| CSE017-2N-3G-B        | G 3/4       |                      |



### CAVITY 孔口 CSE019-2N

Dimensions on Page Appendixes-A 尺寸在附錄A頁面 001

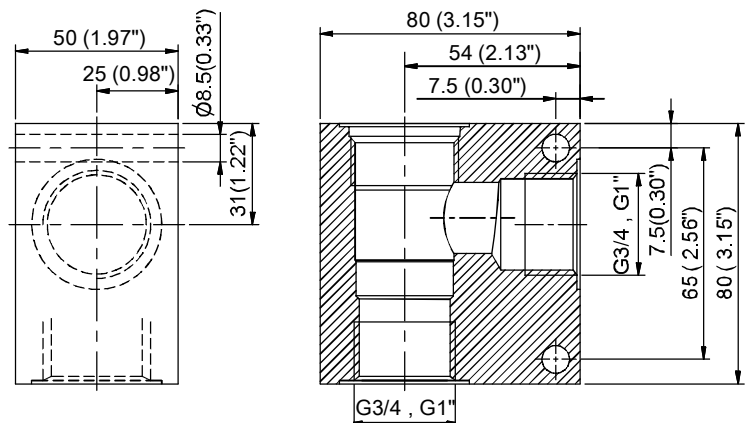
| ORDERING CODE<br>訂購代號 | Ports<br>接口 | Weight<br>重量 Kg(lbs) |
|-----------------------|-------------|----------------------|
| CSE019-2N-3G-A        | G 1/4       | 0.20<br>(0.44 lbs)   |
| CSE019-2N-3G-B        | G 3/8       |                      |



### CAVITY 孔口 CSE021-2N

Dimensions on Page Appendixes-A 尺寸在附錄A頁面 001

| ORDERING CODE<br>訂購代號 | Ports<br>接口 | Weight<br>重量 Kg(lbs) |
|-----------------------|-------------|----------------------|
| CSE021-2N-3G-A        | G 3/4       | 0.86<br>(1.90 lbs)   |
| CSE021-2N-3G-B        | G 1         |                      |



### FEATURES

**MAX.PRESSURE 3600 psi  
(250 bar)**

Note: The maximum allowable pressure for the standard aluminum-alloy valves is 250 bar; we also supply the nodular ductile-iron and steel valves; contact our factory for details  
註: 標準閥塊鋁合金最大壓力250bar, 另提供球墨鑄鐵及鋼製閥塊, 請聯繫工廠。

# STANDARD MANIFOLDS

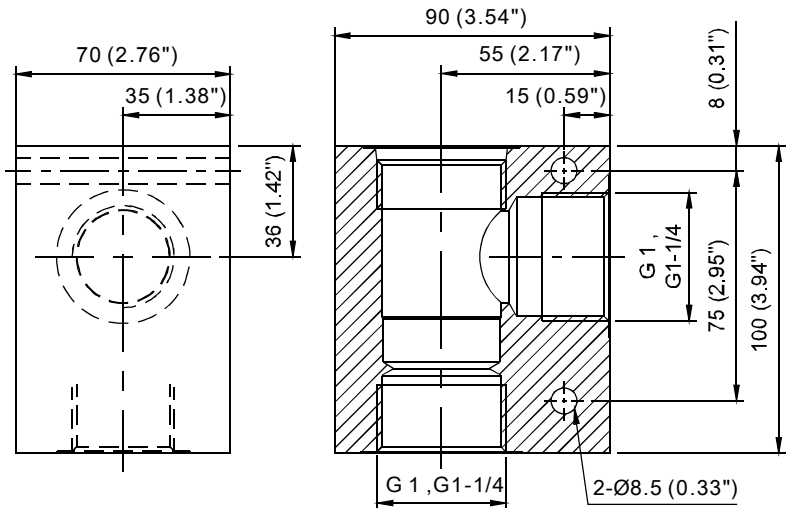
CSEXXX-2N

標準油路板

|   |  |   |
|---|--|---|
| ◆ | <b>ORDER THE EXPLANATION</b><br>訂購說明   | <b>CSE 04 - 2N - 3G - A *</b><br>※1 ※2 ※3 |
|   | <p>※1 <b>Threaded Type</b> 螺紋規格<br/>1P: PT 2N: NPT 3G: PF(G) 4A: SAE 5B: BSP</p> <p>※2 <b>Ports</b> 接口</p> <p>※3 <b>Body Material</b> 閥體材質<br/>NONE (Standard): Aluminum-alloy (Anodized) 無 (標準): 鋁合金(陽極處理)<br/>D : Nodular Ductile-Iron (Galvanization) D : 球墨鑄鐵(鍍鋅)<br/>S : Steel (Galvanization) S : 鋼質(鍍鋅)</p> |   |

|  |                  |
|--|------------------|
| <b>CAVITY</b> 孔口                             | <b>CSE 04-2N</b> |
| Dimensions on Page Appendixes-A 尺寸在附錄A頁面 001 |                  |

| ORDERING CODE<br>訂購代號 | Ports<br>接口 | Weight<br>重量 Kg(lbs) |
|-----------------------|-------------|----------------------|
| CSE 04-2N-3G-A        | G 1         | 1.70<br>(3.75 lbs)   |
| CSE 04-2N-3G-B        | G 1-1/4     |                      |



**MAX.PRESSURE** 3600 psi  
(250 bar)

## FEATURES

Note: The maximum allowable pressure for the standard aluminum-alloy valves is 250 bar; we also supply the nodular ductile-iron and steel valves; contact our factory for details  
註: 標準閥塊鋁合金最大壓力250bar, 另提供球墨鑄鐵及鋼製閥塊, 請聯繫工廠。

Appendixes-B

附錄-B

### ORDER THE EXPLANATION

訂購說明

CS08 - 2N -  $\frac{3G}{\times 1}$  -  $\frac{A}{\times 2}$  \*  $\frac{\times 3}{\times 3}$

#### ※1 Threaded Type 螺紋規格

1P: PT 2N: NPT 3G: PF(G) 4A: SAE 5B: BSP

#### ※2 Ports 接口

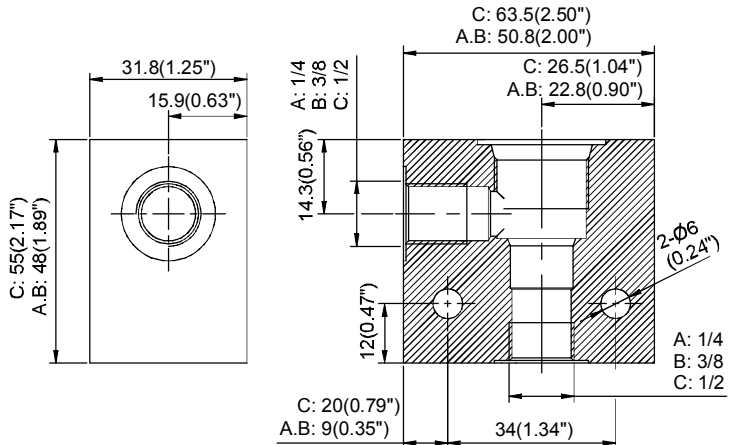
#### ※3 Body Material 閥體材質

NONE (Standard): Aluminum-alloy (Anodized) 無 (標準): 鋁合金(陽極處理)  
 D: Nodular Ductile-Iron (Galvanization) D: 球墨鑄鐵(鍍鋅)  
 S: Steel (Galvanization) S: 鋼質(鍍鋅)

### CAVITY 孔口 CS08-2N

Dimensions on Page Appendixes-A 尺寸在附錄A頁面 001

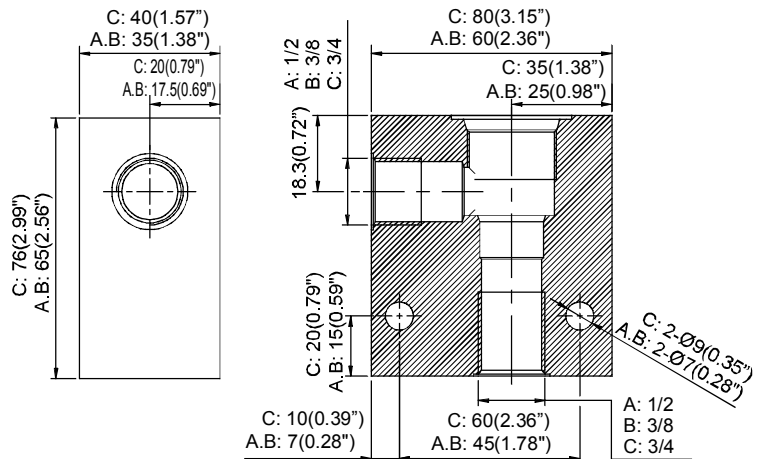
| ORDERING CODE<br>訂購代號 | Ports<br>接口 | Weight<br>重量 Kg(lbs) |
|-----------------------|-------------|----------------------|
| CS08-2N-**-A          | 1/4         | 0.20<br>(0.44 lbs)   |
|                       | SAE4        |                      |
| CS08-2N-**-B          | 3/8         | 0.20<br>(0.44 lbs)   |
|                       | SAE6        |                      |
| CS08-2N-**-C          | 1/2         | 0.30<br>(0.66 lbs)   |
|                       | SAE8        |                      |



### CAVITY 孔口 CS10-2N

Dimensions on Page Appendixes-A 尺寸在附錄A頁面 001

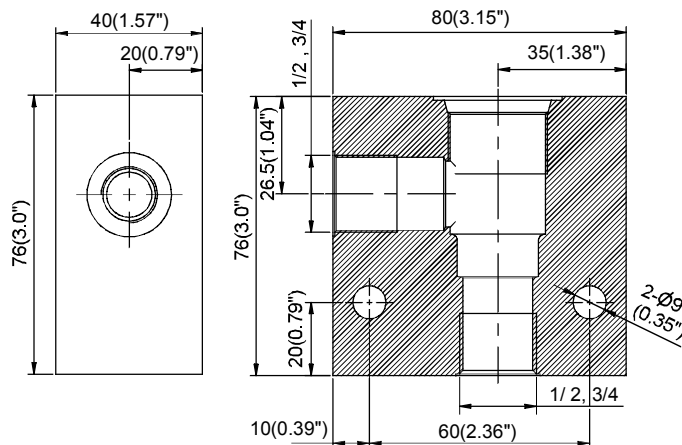
| ORDERING CODE<br>訂購代號 | Ports<br>接口 | Weight<br>重量 Kg(lbs) |
|-----------------------|-------------|----------------------|
| CS10-2N-**-A          | 1/2         | 0.37<br>(0.82 lbs)   |
|                       | SAE8        |                      |
| CS10-2N-**-B          | 3/8         | 0.37<br>(0.82 lbs)   |
|                       | SAE6        |                      |
| CS10-2N-**-C          | 3/4         | 0.56<br>(1.23 lbs)   |
|                       | SAE12       |                      |



### CAVITY 孔口 CS12-2N

Dimensions on Page Appendixes-A 尺寸在附錄A頁面 001

| ORDERING CODE<br>訂購代號 | Ports<br>接口 | Weight<br>重量 Kg(lbs) |
|-----------------------|-------------|----------------------|
| CS12-2N-**-A          | 1/2         | 0.66<br>(1.46 lbs)   |
|                       | SAE8        |                      |
| CS12-2N-**-B          | 3/4         | 0.66<br>(1.46 lbs)   |
|                       | SAE12       |                      |



**MAX.PRESSURE 3600 psi (250 bar)**

### FEATURES

Note: The maximum allowable pressure for the standard aluminum-alloy valves is 250 bar; we also supply the nodular ductile-iron and steel valves; contact our factory for details  
 註: 標準閥塊鋁合金最大壓力250bar, 另提供球墨鑄鐵及鋼製閥塊, 請聯繫工廠。



### ORDER THE EXPLANATION

訂購說明

CS08 - 3N -  $\frac{3G}{※1}$  -  $\frac{A}{※2}$  \*  
 $\frac{*}{※3}$

#### ※1 Threaded Type 螺紋規格

1P: PT 2N: NPT 3G: PF(G) 4A: SAE 5B: BSP

#### ※2 Ports 接口

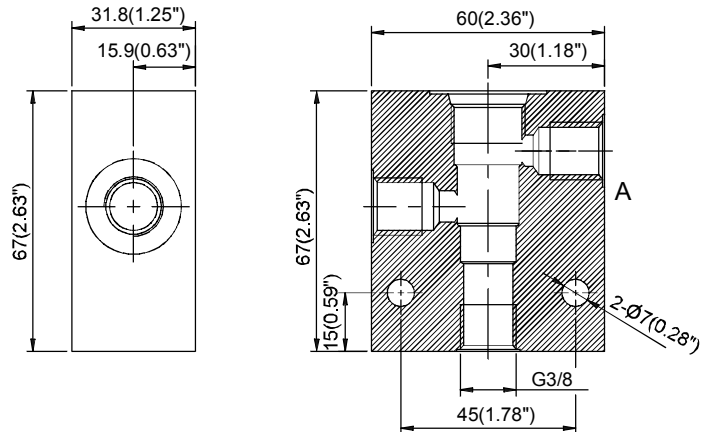
#### ※3 Body Material 閥體材質

NONE (Standard); Aluminum-alloy (Anodized) 無 (標準): 鋁合金(陽極處理)  
 D: Nodular Ductile-Iron (Galvanization) D: 球墨鑄鐵(鍍鋅)  
 S: Steel (Galvanization) S: 鋼質(鍍鋅)

### CAVITY 孔口 CS08-3N

Dimensions on Page Appendixes-A 尺寸在附錄A頁面 002

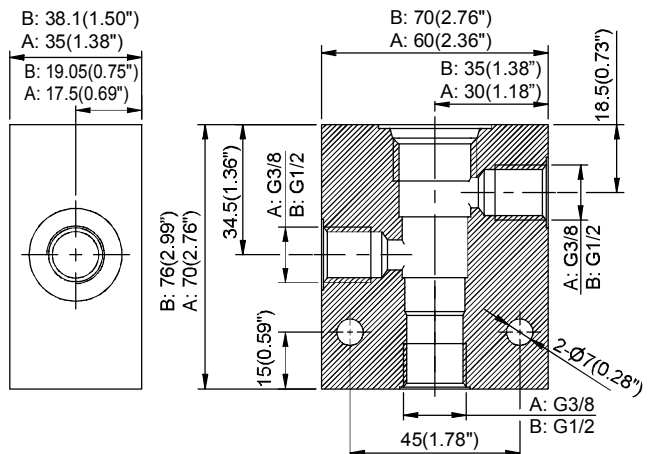
| ORDERING CODE<br>訂購代號 | Ports<br>接口 | Weight<br>重量 Kg(lbs) |
|-----------------------|-------------|----------------------|
| CS08-3N-**-A          | 3/8         | 0.35<br>(0.77 lbs)   |
|                       | SAE6        |                      |
| CS08-3N-**-B          | 1/4         |                      |
|                       | SAE4        |                      |



### CAVITY 孔口 CS10-3N

Dimensions on Page Appendixes-A 尺寸在附錄A頁面 002

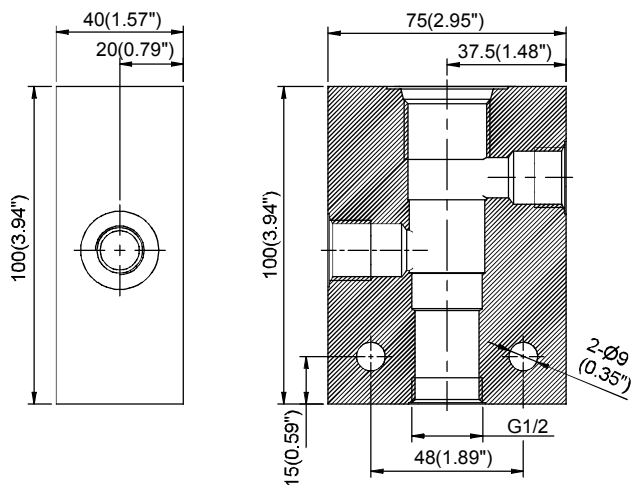
| ORDERING CODE<br>訂購代號 | Ports<br>接口 | Weight<br>重量 Kg(lbs) |
|-----------------------|-------------|----------------------|
| CS10-3N-**-A          | 3/8         | 0.40<br>(0.88 lbs)   |
|                       | SAE6        |                      |
| CS10-3N-**-B          | 1/2         | 0.58<br>(1.28 lbs)   |
|                       | SAE8        |                      |



### CAVITY 孔口 CS12-3N

Dimensions on Page Appendixes-A 尺寸在附錄A頁面 002

| ORDERING CODE<br>訂購代號 | Ports<br>接口 | Weight<br>重量 Kg(lbs) |
|-----------------------|-------------|----------------------|
| CS12-3N-**-A          | 1/2         | 0.81<br>(1.79 lbs)   |
|                       | SAE8        |                      |
| CS12-3N-**-B          | 3/4         |                      |
|                       | SAE12       |                      |



### FEATURES

**MAX.PRESSURE 3600 psi (250 bar)**

Note: The maximum allowable pressure for the standard aluminum-alloy valves is 250 bar; we also supply the nodular ductile-iron and steel valves; contact our factory for details  
 註: 標準閥塊鋁合金最大壓力250bar, 另提供球墨鑄鐵及鋼製閥塊, 請聯繫工廠。

# STANDARD MANIFOLDS

CSXX-3N

標準油路板

## ORDER THE EXPLANATION 訂購說明

CS16 - 3N -  $\frac{3G}{\times 1}$  -  $\frac{A}{\times 2}$  \*  $\frac{\times 3}{\times 3}$

### ※1 Threaded Type 螺紋規格

1P: PT 2N: NPT 3G: PF(G) 4A: SAE 5B: BSP

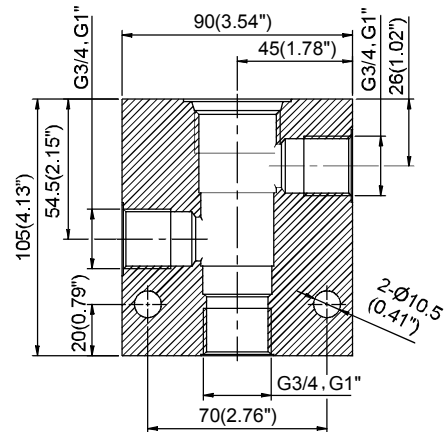
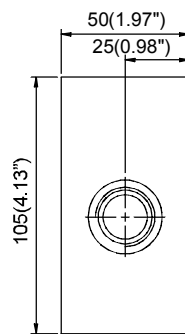
### ※2 Ports 接口

### ※3 Body Material 閥體材質

NONE (Standard): Aluminum-alloy (Anodized) 無 (標準): 鋁合金(陽極處理)  
D: Nodular Ductile-Iron (Galvanization) D: 球墨鑄鐵(鍍鋅)  
S: Steel (Galvanization) S: 鋼質(鍍鋅)

## CAVITY 孔口 CS16-3N

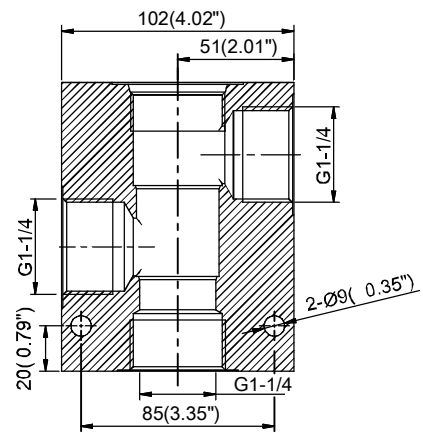
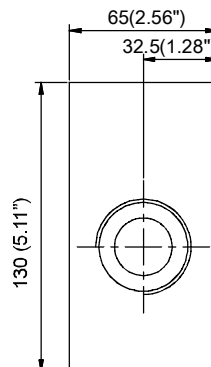
Dimensions on Page Appendixes-A 尺寸在附錄A頁面 002



| ORDERING CODE<br>訂購代號 | Ports<br>接口 | Weight<br>重量 Kg(lbs) |
|-----------------------|-------------|----------------------|
| CS16-3N-3G-A          | G 3/4       | 1.3<br>(2.86 lbs)    |
| CS16-3N-3G-B          | G 1         |                      |

## CAVITY 孔口 CS20-3N

Dimensions on Page Appendixes-A 尺寸在附錄A頁面 003



| ORDERING CODE<br>訂購代號 | Ports<br>接口 | Weight<br>重量 Kg(lbs) |
|-----------------------|-------------|----------------------|
| CS20-3N-3G-A          | G 1-1/4     | 2.4<br>(5.29 lbs)    |
|                       |             |                      |

**MAX.PRESSURE** 3600 psi  
(250 bar)

## FEATURES

Note: The maximum allowable pressure for the standard aluminum-alloy valves is 250 bar; we also supply the nodular ductile-iron and steel valves; contact our factory for details  
註: 標準閥塊鋁合金最大壓力250bar, 另提供球墨鑄鐵及鋼製閥塊, 請聯繫工廠。

### ORDER THE EXPLANATION 訂購說明

CS08 - 3S - 3G - A \*  
※1 ※2 ※3

#### ※1 Threaded Type 螺紋規格

1P: PT 2N: NPT 3G: PF(G) 4A: SAE 5B: BSP

#### ※2 Ports 接口

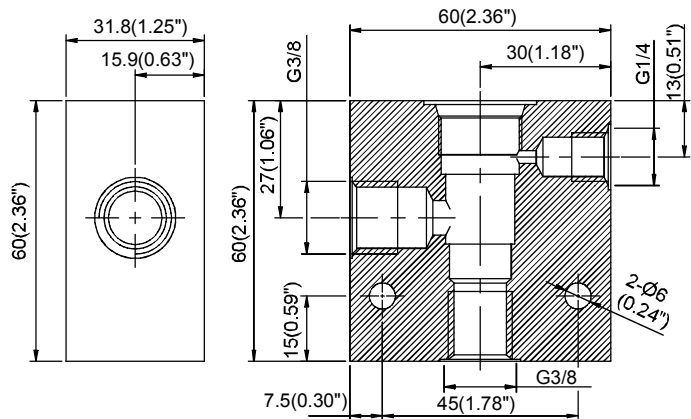
#### ※3 Body Material 閥體材質

NONE (Standard): Aluminum-alloy (Anodized) 無 (標準): 鋁合金(陽極處理)  
D: Nodular Ductile-Iron (Galvanization) D: 球墨鑄鐵(鍍鋅)  
S: Steel (Galvanization) S: 鋼質(鍍鋅)

### CAVITY 孔口 CS08-3S

Dimensions on Page Appendixes-A 尺寸在附錄A頁面 003

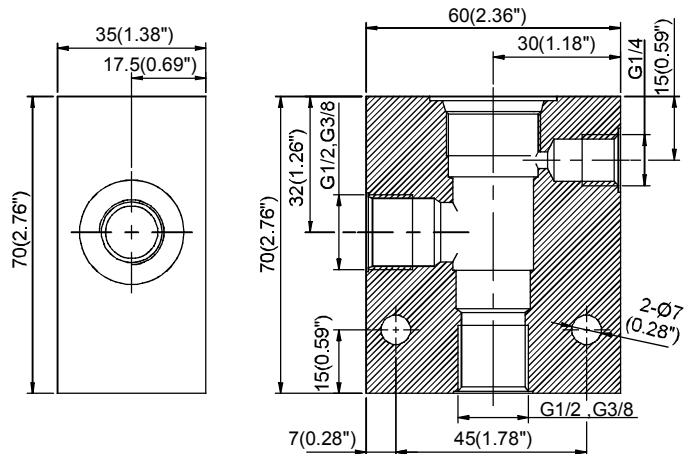
| ORDERING CODE<br>訂購代號 | Ports<br>接口 | Weight<br>重量 Kg(lbs) |
|-----------------------|-------------|----------------------|
| CS08-3S-3G-A          | G 3/8       | 0.31<br>(0.68 lbs)   |



### CAVITY 孔口 CS10-3S

Dimensions on Page Appendixes-A 尺寸在附錄A頁面 003

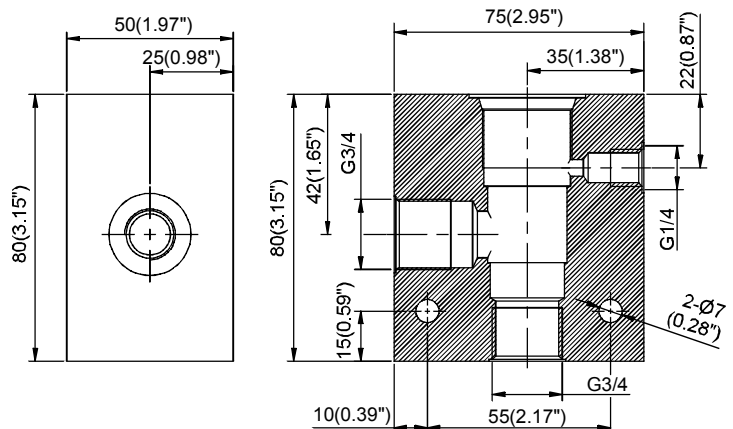
| ORDERING CODE<br>訂購代號 | Ports<br>接口 | Weight<br>重量 Kg(lbs) |
|-----------------------|-------------|----------------------|
| CS10-3S-**-A          | 1/2<br>SAE8 | 0.40<br>(0.88 lbs)   |
| CS10-3S-**-B          | 3/8<br>SAE6 | 0.40<br>(0.88 lbs)   |



### CAVITY 孔口 CS12-3S

Dimensions on Page Appendixes-A 尺寸在附錄A頁面 003

| ORDERING CODE<br>訂購代號 | Ports<br>接口 | Weight<br>重量 Kg(lbs) |
|-----------------------|-------------|----------------------|
| CS12-3S-3G-A          | G 3/4       | 0.81<br>(1.79 lbs)   |



### FEATURES

**MAX.PRESSURE** 3600 psi  
(250 bar)

Note: The maximum allowable pressure for the standard aluminum-alloy valves is 250 bar; we also supply the nodular ductile-iron and steel valves; contact our factory for details  
註: 標準閥塊鋁合金最大壓力250bar, 另提供球墨鑄鐵及鋼製閥塊, 請聯繫工廠。

# STANDARD MANIFOLDS

CSXX-3S

標準油路板

## ORDER THE EXPLANATION

訂購說明

CS16 - 3S - 3G - A \*  
※1    ※2    ※3

### ※1 Threaded Type 螺紋規格

1P: PT 2N: NPT 3G: PF(G) 4A: SAE 5B: BSP

### ※2 Ports 接口

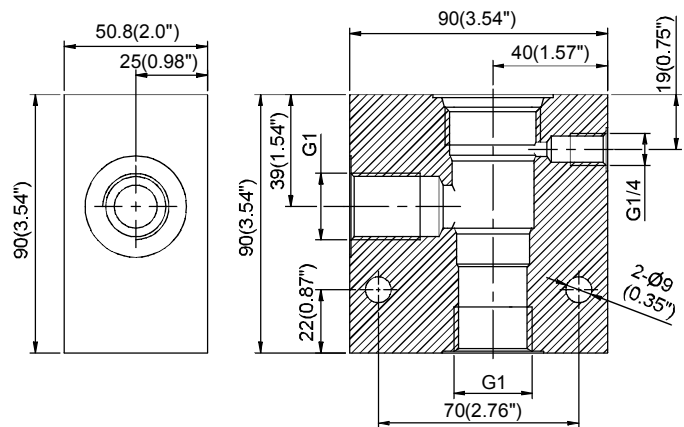
### ※3 Body Material 閥體材質

NONE (Standard): Aluminum-alloy (Anodized)    無 (標準): 鋁合金(陽極處理)  
 D: Nodular Ductile-Iron (Galvanization)        D: 球墨鑄鐵(鍍鋅)  
 S: Steel (Galvanization)                            S: 鋼質(鍍鋅)

## CAVITY 孔口 CS16-3S

Dimensions on Page Appendixes-A 尺寸在附錄A頁面 003

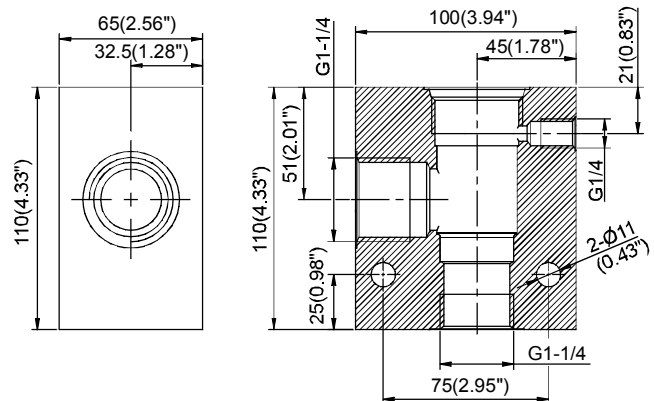
| ORDERING CODE<br>訂購代號 | Ports<br>接口 | Weight<br>重量 Kg(lbs) |
|-----------------------|-------------|----------------------|
| CS16-3S-3G-A          | G 1         | 1.09<br>(2.40 lbs)   |



## CAVITY 孔口 CS20-3S

Dimensions on Page Appendixes-A 尺寸在附錄A頁面 003

| ORDERING CODE<br>訂購代號 | Ports<br>接口 | Weight<br>重量 Kg(lbs) |
|-----------------------|-------------|----------------------|
| CS20-3S-3G-A          | G 1-1/4     | 1.93<br>(4.25 lbs)   |



## FEATURES

**MAX.PRESSURE 3600 psi (250 bar)**

Note: The maximum allowable pressure for the standard aluminum-alloy valves is 250 bar; we also supply the nodular ductile-iron and steel valves; contact our factory for details  
 註: 標準閥塊鋁合金最大壓力250bar, 另提供球墨鑄鐵及鋼製閥塊, 請聯繫工廠。

Appendixes-B

附錄-B



### ORDER THE EXPLANATION 訂購說明

CS08 - 4N -  $\frac{3G}{※1}$  -  $\frac{A}{※2}$  \*  
※3

#### ※1 Threaded Type 螺紋規格

1P: PT 2N: NPT 3G: PF(G) 4A: SAE 5B: BSP

#### ※2 Ports 接口

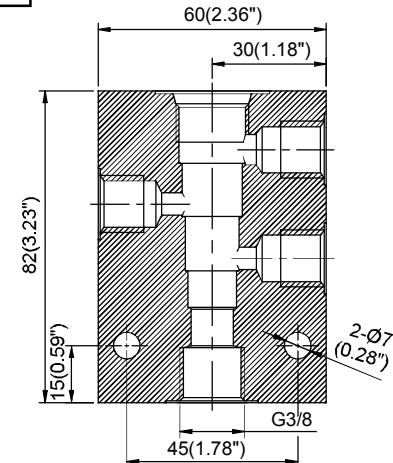
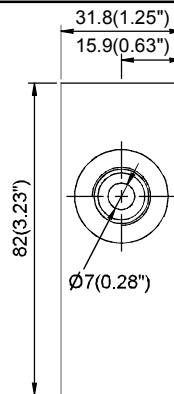
#### ※3 Body Material 閥體材質

NONE (Standard): Aluminum-alloy (Anodized) 無 (標準): 鋁合金(陽極處理)  
D: Nodular Ductile-Iron (Galvanization) D: 球墨鑄鐵(鍍鋅)  
S: Steel (Galvanization) S: 鋼質(鍍鋅)

### CAVITY 孔口 CS08-4N

Dimensions on Page Appendixes-A 尺寸在附錄A頁面 004

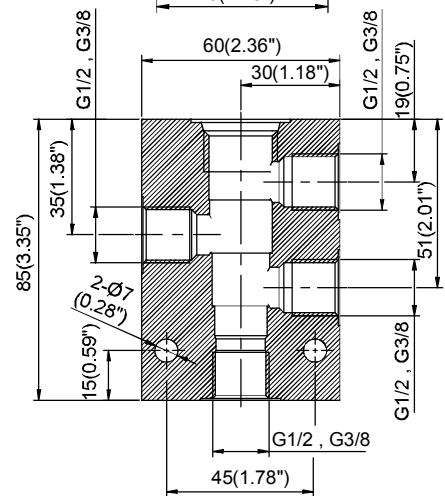
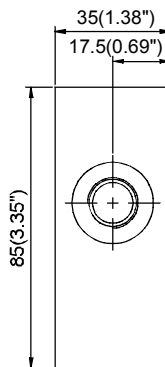
| ORDERING CODE<br>訂購代號 | Ports<br>接口 | Weight<br>重量 Kg(lbs) |
|-----------------------|-------------|----------------------|
| CS08-4N-3G-A          | G 3/8       | 0.42<br>(0.93 lbs)   |



### CAVITY 孔口 CS10-4N

Dimensions on Page Appendixes-A 尺寸在附錄A頁面 004

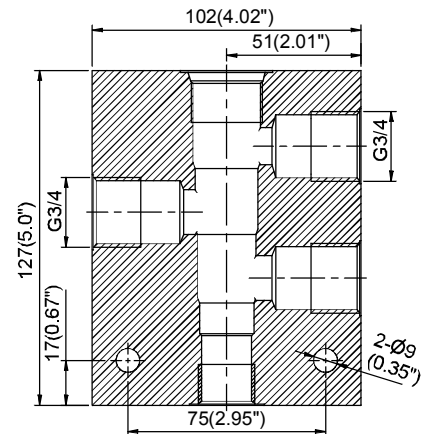
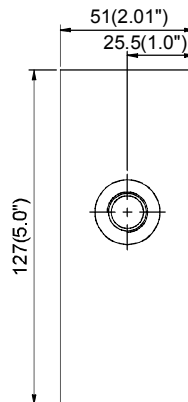
| ORDERING CODE<br>訂購代號 | Ports<br>接口 | Weight<br>重量 Kg(lbs) |
|-----------------------|-------------|----------------------|
| CS10-4N-3G-A          | G 1/2       | 0.48<br>(1.06 lbs)   |
| CS10-4N-3G-B          | G 3/8       |                      |



### CAVITY 孔口 CS12-4N

Dimensions on Page Appendixes-A 尺寸在附錄A頁面 004

| ORDERING CODE<br>訂購代號 | Ports<br>接口 | Weight<br>重量 Kg(lbs) |
|-----------------------|-------------|----------------------|
| CS12-4N-3G-A          | G 3/4       | 1.78<br>(3.92 lbs)   |



### FEATURES

**MAX.PRESSURE 3600 psi  
(250 bar)**

Note: The maximum allowable pressure for the standard aluminum-alloy valves is 250 bar; we also supply the nodular ductile-iron and steel valves; contact our factory for details  
註: 標準閥塊鋁合金最大壓力250bar, 另提供球墨鑄鐵及鋼製閥塊, 請聯繫工廠。

# STANDARD MANIFOLDS

## CSXX-4N

標準油路板

### ORDER THE EXPLANATION

訂購說明

CS16 - 4N -  $\frac{3G}{※1}$  -  $\frac{A}{※2}$   $\frac{*}{※3}$

#### ※1 Threaded Type 螺紋規格

1P: PT 2N: NPT 3G: PF(G) 4A: SAE 5B: BSP

#### ※2 Ports 接口

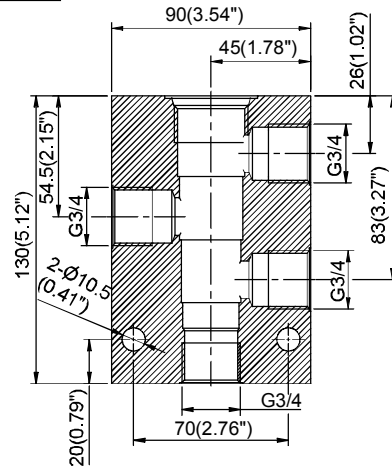
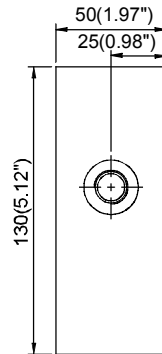
#### ※3 Body Material 閥體材質

NONE (Standard); Aluminum-alloy (Anodized) 無 (標準): 鋁合金(陽極處理)  
 D: Nodular Ductile-Iron (Galvanization) D: 球墨鑄鐵(鍍鋅)  
 S: Steel (Galvanization) S: 鋼質(鍍鋅)

### CAVITY 孔口 CS16-4N

Dimensions on Page Appendixes-A 尺寸在附錄A頁面 004

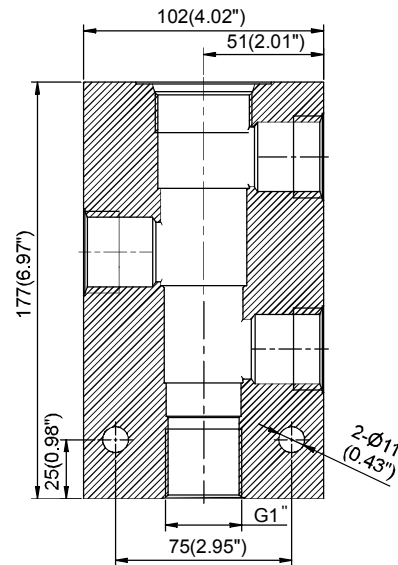
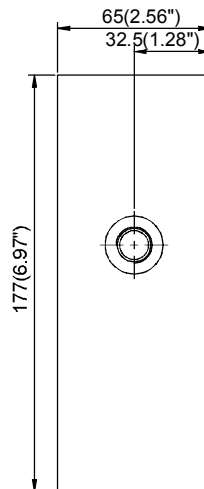
| ORDERING CODE<br>訂購代號 | Ports<br>接口 | Weight<br>重量 Kg(lbs) |
|-----------------------|-------------|----------------------|
| CS16-4N-3G-A          | G 3/4       | 1.58<br>(3.48 lbs)   |



### CAVITY 孔口 CS20-4N

Dimensions on Page Appendixes-A 尺寸在附錄A頁面 004

| ORDERING CODE<br>訂購代號 | Ports<br>接口 | Weight<br>重量 Kg(lbs) |
|-----------------------|-------------|----------------------|
| CS20-4N-3G-A          | G 1         | 3.17<br>(6.99 lbs)   |



**MAX.PRESSURE 3600 psi (250 bar)**

### FEATURES

Note: The maximum allowable pressure for the standard aluminum-alloy valves is 250 bar; we also supply the nodular ductile-iron and steel valves; contact our factory for details  
 註: 標準閥塊鋁合金最大壓力250bar, 另提供球墨鑄鐵及鋼製閥塊, 請聯繫工廠。

Appendixes-B

附錄-B

### ORDER THE EXPLANATION 訂購說明

CS10A - 4N - **\*\*** - **A** **\***  
※1      ※2      ※3

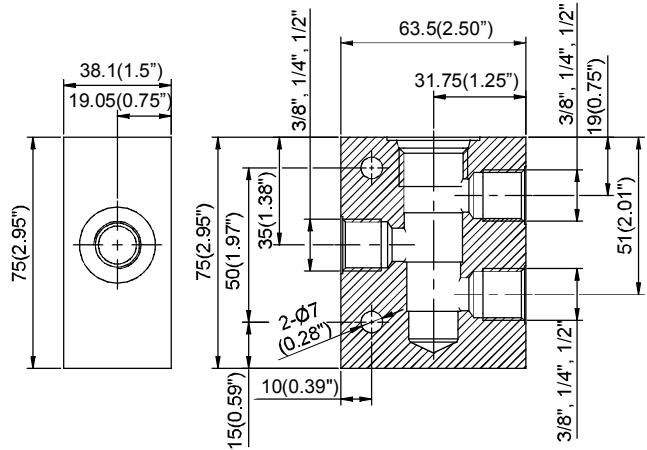
**※1 Threaded Type** 螺紋規格  
 1P: PT 2N: NPT 3G: PF(G) 4A: SAE 5B: BSP

**※2 Ports** 接口

**※3 Body Material** 閥體材質  
 NONE (Standard): Aluminum-alloy (Anodized) 無 (標準): 鋁合金(陽極處理)  
 D: Nodular Ductile-Iron (Galvanization) D: 球墨鑄鐵(鍍鋅)  
 S: Steel (Galvanization) S: 鋼質(鍍鋅)

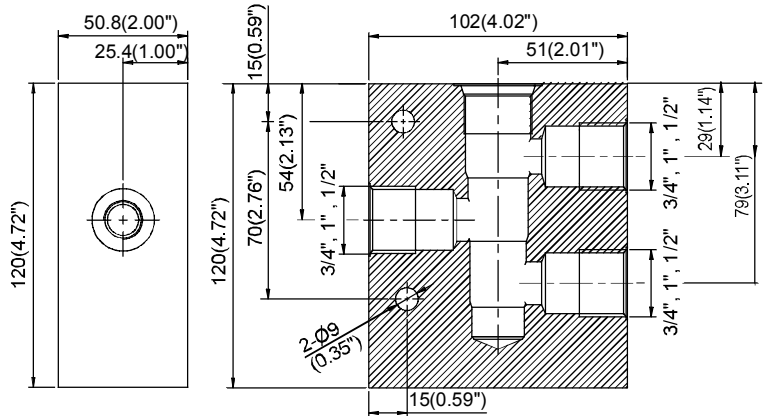
### CAVITY 孔口 CS10A-4N Dimensions on Appendixes-A 尺寸在附錄A

| ORDERING CODE<br>訂購代號 | Ports<br>接口 | Weight<br>重量 Kg(lbs) |
|-----------------------|-------------|----------------------|
| CS10A-4N-**-A         | 3/8<br>SAE6 | 0.49<br>(1.01 lbs)   |
| CS10A-4N-**-B         | 1/4<br>SAE4 |                      |
| CS10A-4N-**-C         | 1/2<br>SAE8 |                      |



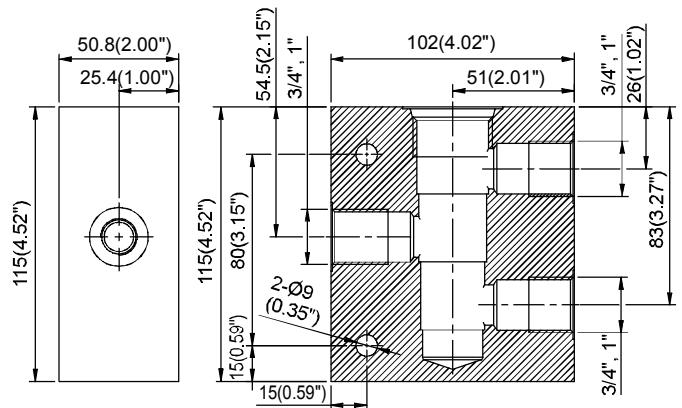
### CAVITY 孔口 CS12A-4N Dimensions on Appendixes-A 尺寸在附錄A

| ORDERING CODE<br>訂購代號 | Ports<br>接口  | Weight<br>重量 Kg(lbs) |
|-----------------------|--------------|----------------------|
| CS12A-4N-**-A         | 3/4<br>SAE12 | 1.68<br>(3.70 lbs)   |
| CS12A-4N-**-B         | 1<br>SAE16   |                      |
| CS12A-4N-**-C         | 1/2<br>SAE8  |                      |



### CAVITY 孔口 CS16A-4N Dimensions on Appendixes-A 尺寸在附錄A

| ORDERING CODE<br>訂購代號 | Ports<br>接口  | Weight<br>重量 Kg(lbs) |
|-----------------------|--------------|----------------------|
| CS16A-4N-**-A         | 3/4<br>SAE12 | 1.61<br>(3.55 lbs)   |
| CS16A-4N-**-B         | 1<br>SAE16   |                      |



**MAX.PRESSURE 3600 psi (250 bar)**

### FEATURES

Note: The maximum allowable pressure for the standard aluminum-alloy valves is 250 bar; we also supply the nodular ductile-iron and steel valves; contact our factory for details  
 註: 標準閥塊鋁合金最大壓力250bar, 另提供球墨鑄鐵及鋼製閥塊, 請聯繫工廠。

# STANDARD MANIFOLDS

CST-XXA

標準油路板

## ORDER THE EXPLANATION

訂購說明

CST - 2A - 3G - A \*  
※1    ※2    ※3

### ※1 Threaded Type 螺紋規格

1P: PT 2N: NPT 3G: PF(G) 4A: SAE 5B: BSP

### ※2 Ports 接口

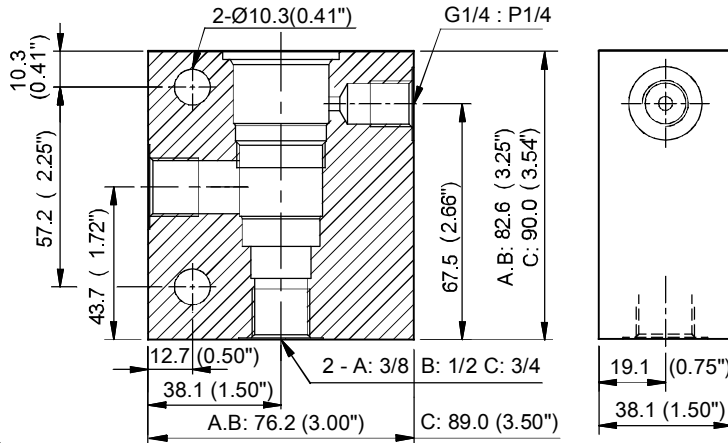
### ※3 Body Material 閥體材質

NONE (Standard): Aluminum-alloy (Anodized) 無 (標準): 鋁合金(陽極處理)  
 D: Nodular Ductile-Iron (Galvanization) D: 球墨鑄鐵(鍍鋅)  
 S: Steel (Galvanization) S: 鋼質(鍍鋅)

## CAVITY 孔口 CST-2A

Dimensions on Page Appendixes-A 尺寸在附錄A頁面 006

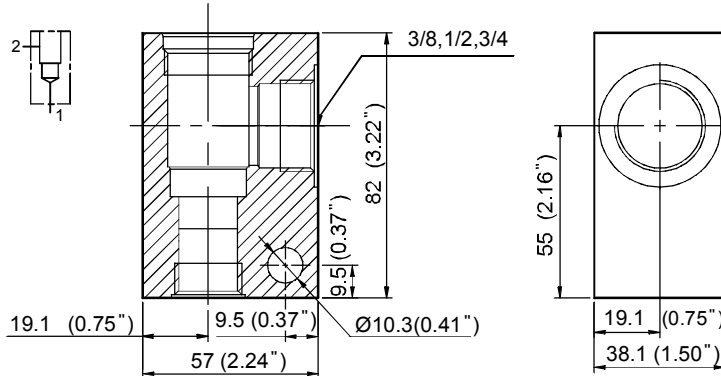
| ORDERING CODE<br>訂購代號 | Ports<br>接口 | Weight<br>重量 Kg(lbs) |
|-----------------------|-------------|----------------------|
| CST-2A-**-A           | 3/8         | 0.65<br>(1.43 lbs)   |
|                       | SAE6        |                      |
| CST-2A-**-B           | 1/2         | 0.68<br>(1.50 lbs)   |
|                       | SAE8        |                      |
| CST-2A-**-C           | 3/4         | 0.68<br>(1.50 lbs)   |
|                       | SAE12       |                      |



## CAVITY 孔口 CST-3A

Dimensions on Page Appendixes-A 尺寸在附錄A頁面 006

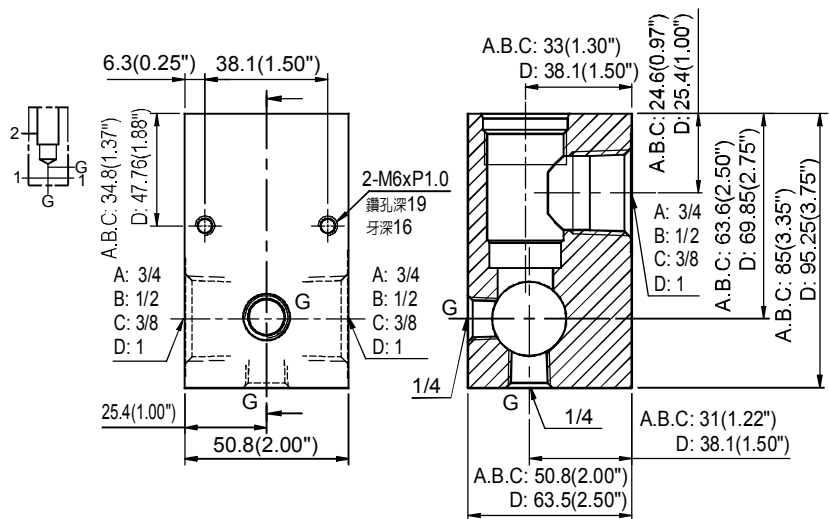
| ORDERING CODE<br>訂購代號 | Ports<br>接口 | Weight<br>重量 Kg(lbs) |
|-----------------------|-------------|----------------------|
| CST-3A-**-A           | 3/8         | 0.48<br>(1.05 lbs)   |
|                       | SAE6        |                      |
| CST-3A-**-B           | 1/2         | 0.48<br>(1.05 lbs)   |
|                       | SAE8        |                      |
| CST-3A-**-C           | 3/4         | 0.68<br>(1.50 lbs)   |
|                       | SAE12       |                      |
| CST-3A-**-D           | 5/8         | 0.68<br>(1.50 lbs)   |
|                       | SAE10       |                      |



## CAVITY 孔口 CST-3ACE

Dimensions on Page Appendixes-A 尺寸在附錄A頁面 006

| ORDERING CODE<br>訂購代號 | Ports<br>接口 | Weight<br>重量 Kg(lbs) |
|-----------------------|-------------|----------------------|
| CST-3A CE-**-A        | 3/4         | 0.44<br>(0.97 lbs)   |
|                       | SAE12       |                      |
| CST-3A CE-**-B        | 1/2         | 0.44<br>(0.97 lbs)   |
|                       | SAE8        |                      |
| CST-3A CE-**-C        | 3/8         | 0.62<br>(1.37 lbs)   |
|                       | SAE6        |                      |
| CST-3A CE-**-D        | 1           | 0.62<br>(1.37 lbs)   |
|                       | SAE16       |                      |



**MAX.PRESSURE 3600 psi (250 bar)**

## FEATURES

Note: The maximum allowable pressure for the standard aluminum-alloy valves is 250 bar; we also supply the nodular ductile-iron and steel valves; contact our factory for details  
 註: 標準閥塊鋁合金最大壓力250bar, 另提供球墨鑄鐵及鋼製閥塊, 請聯繫工廠。

Appendixes-B 附錄-B

## ORDER THE EXPLANATION

訂購說明

CST - 5A - 3G - A \*  
※1    ※2    ※3

### ※1 Threaded Type 螺紋規格

1P: PT 2N: NPT 3G: PF(G) 4A: SAE 5B: BSP

### ※2 Ports 接口

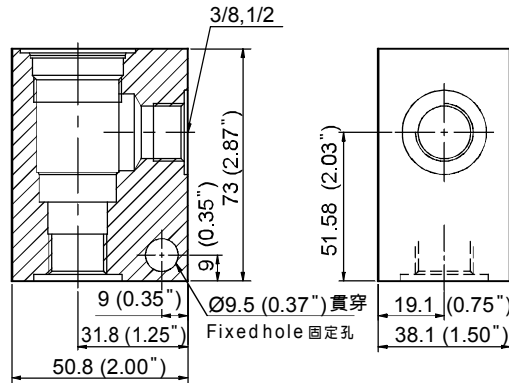
### ※3 Body Material 閥體材質

NONE (Standard); Aluminum-alloy (Anodized) 無 (標準): 鋁合金(陽極處理)  
 D: Nodular Ductile-Iron (Galvanization) D: 球墨鑄鐵(鍍鋅)  
 S: Steel (Galvanization) S: 鋼質(鍍鋅)

## CAVITY 孔口 CST-5A

Dimensions on Page Appendixes-A 尺寸在附錄A頁面 006

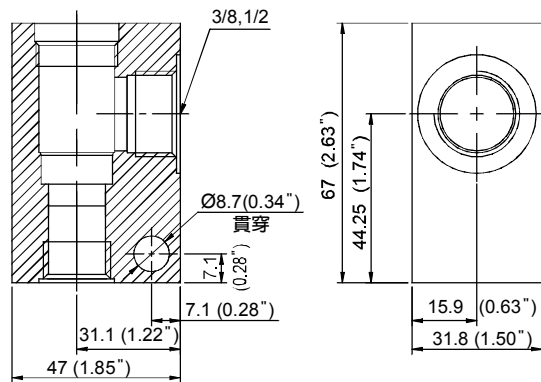
| ORDERING CODE<br>訂購代號 | Ports<br>接口 | Weight<br>重量 Kg(lbs) |
|-----------------------|-------------|----------------------|
| CST-5A-***-A          | 3/8         | 0.38<br>(0.83lbs)    |
|                       | SAE6        |                      |
| CST-5A-***-B          | 1/2         |                      |
|                       | SAE8        |                      |



## CAVITY 孔口 CST-10A

Dimensions on Page Appendixes-A 尺寸在附錄A頁面 006

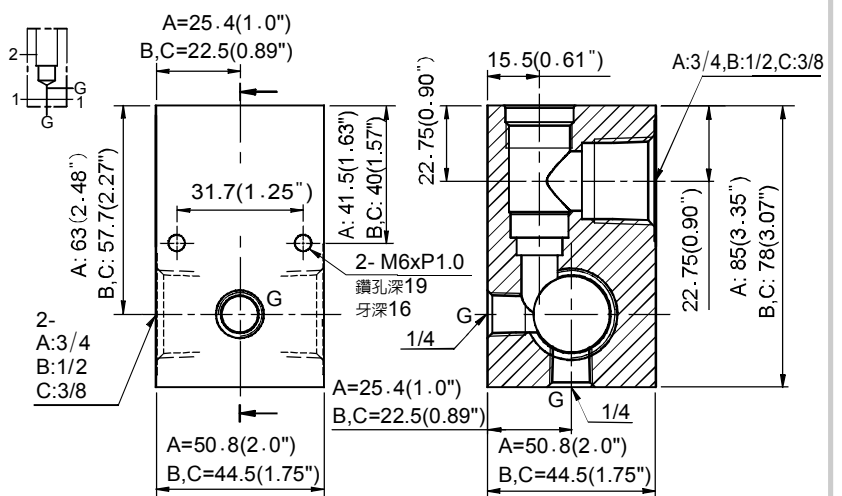
| ORDERING CODE<br>訂購代號 | Ports<br>接口 | Weight<br>重量 Kg(lbs) |
|-----------------------|-------------|----------------------|
| CST-10A-**-A          | 3/8         | 0.27<br>(0.60lbs)    |
|                       | SAE6        |                      |
| CST-10A-**-B          | 1/2         |                      |
|                       | SAE8        |                      |



## CAVITY 孔口 CST-10AFE

Dimensions on Page Appendixes-A 尺寸在附錄A頁面 006

| ORDERING CODE<br>訂購代號 | Ports<br>接口 | Weight<br>重量 Kg(lbs) |
|-----------------------|-------------|----------------------|
| CST-10A FE-**-A       | 3/4         | 0.43<br>(0.95 lbs)   |
|                       | SAE12       |                      |
| CST-10A FE-**-B       | 1/2         | 0.35<br>(0.77 lbs)   |
|                       | SAE8        |                      |
| CST-10A FE-**-C       | 3/8         |                      |
|                       | SAE6        |                      |



**MAX.PRESSURE 3600 psi (250 bar)**

## FEATURES

Note: The maximum allowable pressure for the standard aluminum-alloy valves is 250 bar; we also supply the nodular ductile-iron and steel valves; contact our factory for details  
 註: 標準閥塊鋁合金最大壓力250bar, 另提供球墨鑄鐵及鋼製閥塊, 請聯繫工廠。

# STANDARD MANIFOLDS

CST-XXA

標準油路板

## ORDER THE EXPLANATION 訂購說明

CST - 11A - 3G - A \*  
※1 ※2 ※3

### ※1 Threaded Type 螺紋規格

1P: PT 2N: NPT 3G: PF(G) 4A: SAE 5B: BSP

### ※2 Ports 接口

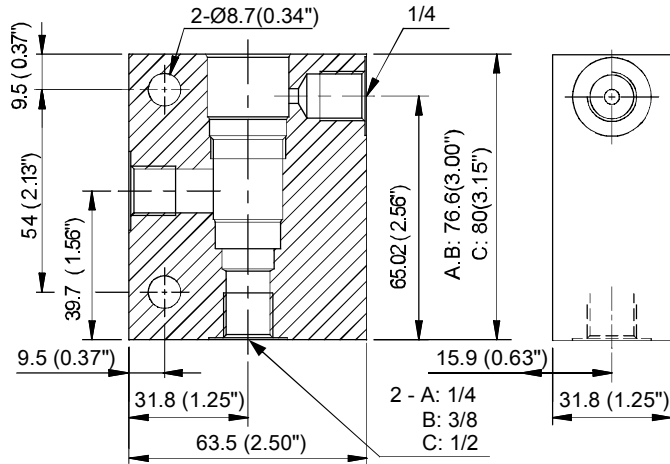
### ※3 Body Material 閥體材質

NONE (Standard): Aluminum-alloy (Anodized) 無 (標準): 鋁合金(陽極處理)  
D: Nodular Ductile-Iron (Galvanization) D: 球墨鑄鐵(鍍鋅)  
S: Steel (Galvanization) S: 鋼質(鍍鋅)

## CAVITY 孔口 CST-11A

Dimensions on Page Appendixes-A 尺寸在附錄A頁面 006

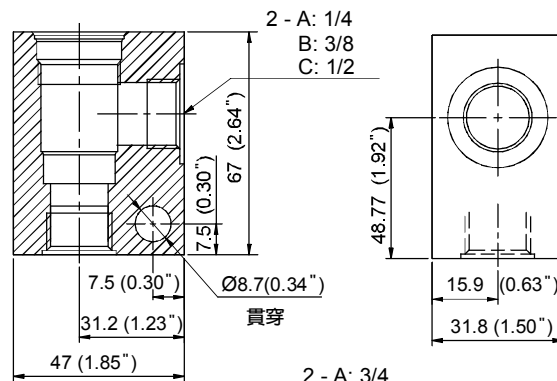
| ORDERING CODE<br>訂購代號 | Ports<br>接口 | Weight<br>重量 Kg(lbs) |
|-----------------------|-------------|----------------------|
| CST-11A-**-A          | 1/4<br>SAE4 | 0.50<br>(1.10 lbs)   |
| CST-11A-**-B          | 3/8<br>SAE6 |                      |
| CST-11A-**-C          | 1/2<br>SAE8 |                      |



## CAVITY 孔口 CST-13A

Dimensions on Page Appendixes-A 尺寸在附錄A頁面 006

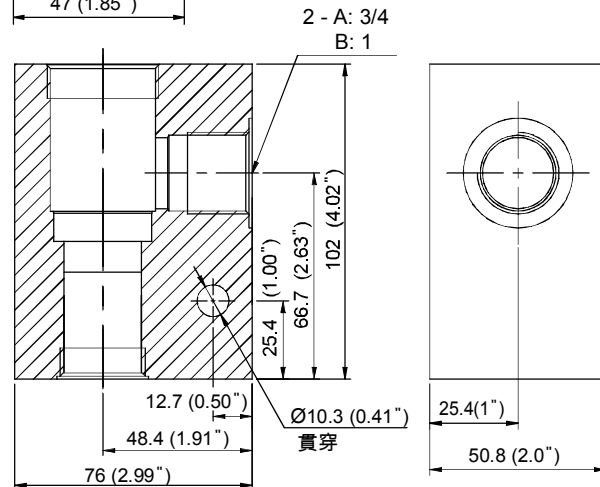
| ORDERING CODE<br>訂購代號 | Ports<br>接口 | Weight<br>重量 Kg(lbs) |
|-----------------------|-------------|----------------------|
| CST-13A-**-A          | 1/4<br>SAE4 | 0.65<br>(1.43 lbs)   |
| CST-13A-**-B          | 3/8<br>SAE6 |                      |
| CST-13A-**-C          | 1/2<br>SAE8 |                      |



## CAVITY 孔口 CST-16A

Dimensions on Page Appendixes-A 尺寸在附錄A頁面 007

| ORDERING CODE<br>訂購代號 | Ports<br>接口  | Weight<br>重量 Kg(lbs) |
|-----------------------|--------------|----------------------|
| CST-16A-**-A          | 3/4<br>SAE12 | 1.21<br>(2.67 lbs)   |
| CST-16A-**-B          | 1<br>SAE16   |                      |



MAX.PRESSURE 3600 psi  
(250 bar)

## FEATURES

Note: The maximum allowable pressure for the standard aluminum-alloy valves is 250 bar; we also supply the nodular ductile-iron and steel valves; contact our factory for details  
註: 標準閥塊鋁合金最大壓力250bar, 另提供球墨鑄鐵及鋼製閥塊, 請聯繫工廠。

Appendixes-B

附錄-B

## ORDER THE EXPLANATION 訂購說明

CST - 17A -  $\frac{**}{\times 1}$  -  $\frac{A}{\times 2}$   $\frac{*}{\times 3}$

### ※1 Threaded Type 螺紋規格

NONE (Standard): Flange type 無 (標準): 法蘭型  
1P: PT 2N: NPT 3G: PF(G) 4A: SAE 5B: BSP

### ※2 Ports 接口

### ※3 Body Material 閥體材質

NONE (Standard): Aluminum-alloy (Anodized) 無 (標準): 鋁合金(陽極處理)  
D: Nodular Ductile-Iron (Galvanization) D: 球墨鑄鐵(鍍鋅)  
S: Steel (Galvanization) S: 鋼質(鍍鋅)

## CAVITY 孔口 CST-17A

Dimensions on Page Appendixes-A 尺寸在附錄A頁面 007

| ORDERING CODE<br>訂購代號 | Ports<br>接口    | Weight<br>重量 Kg(lbs) |
|-----------------------|----------------|----------------------|
| CST-17A-**-A          | 3/4<br>SAE12   | 1.20<br>(2.65 lbs)   |
| CST-17A-**-B          | 1<br>SAE16     |                      |
| CST-17A-**-C          | 1-1/4<br>SAE20 | 1.41<br>(3.10 lbs)   |

## CAVITY 孔口 CST-18A

Dimensions on Appendixes-A 尺寸在附錄A

| ORDERING CODE<br>訂購代號 | Ports<br>接口    | Weight<br>重量 Kg(lbs) |
|-----------------------|----------------|----------------------|
| CST-18A-A (*)         | 1-1/2          | 2.83<br>(6.24 lbs)   |
| CST-18A-**-B          | 1-1/4<br>SAE20 | 1.97<br>(4.34 lbs)   |
| CST-18A-**-C          | 1<br>SAE16     |                      |

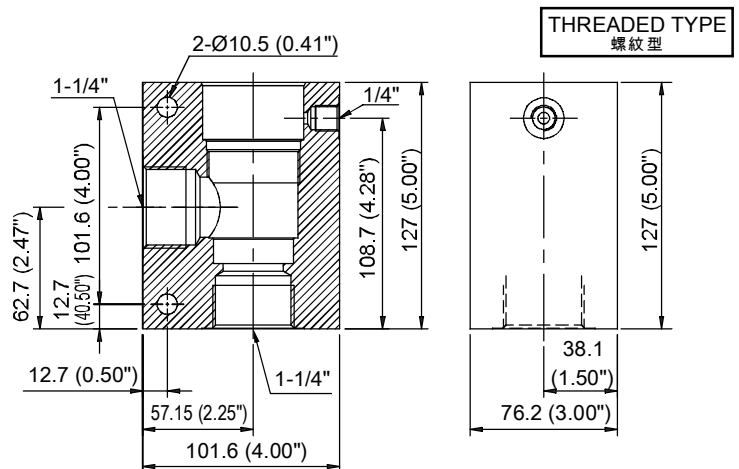
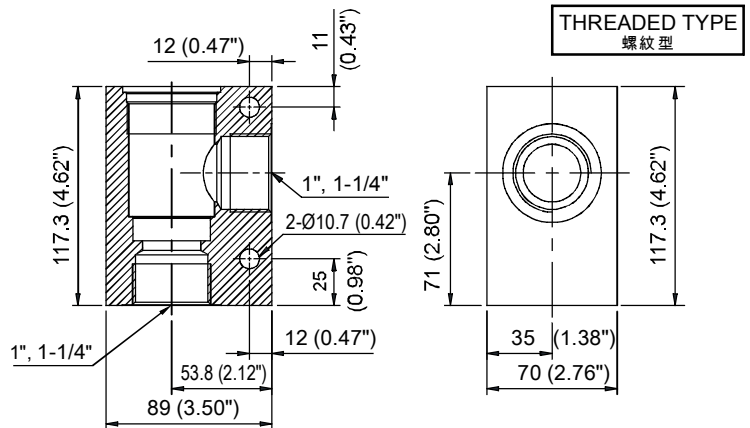
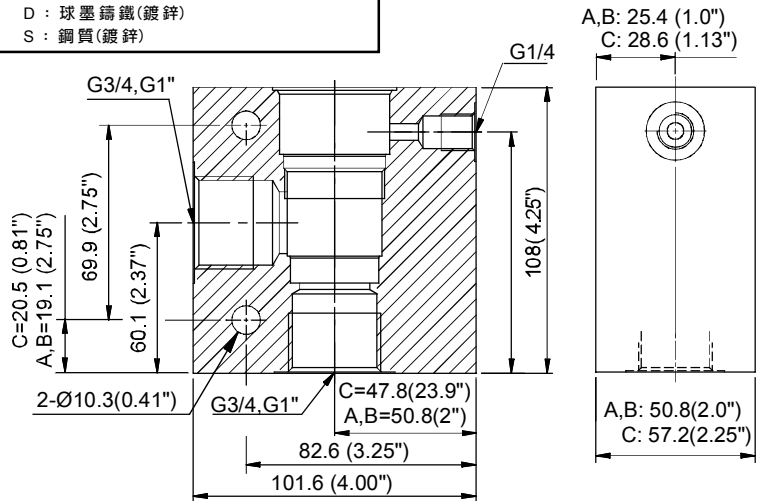
(\*) Flange type only. 僅限法蘭型。  
Note: For further information, such like: Dimensions of Threaded type and Flange type..... Please contact us.  
註: 對於詳細的資訊, 像是: 螺紋型及法蘭型的法蘭尺寸等..... 請與我們聯絡。

## CAVITY 孔口 CST-19A

Dimensions on Appendixes-A 尺寸在附錄A

| ORDERING CODE<br>訂購代號 | Ports<br>接口    | Weight<br>重量 Kg(lbs) |
|-----------------------|----------------|----------------------|
| CST-19A-A (*)         | 1-1/2          | 3.32<br>(7.32 lbs)   |
| CST-19A-**-B          | 1-1/4<br>SAE20 | 2.65<br>(5.84 lbs)   |

(\*) Flange type only. 僅限法蘭型。  
Note: For further information, such like: Dimensions of Threaded type and Flange type..... Please contact us.  
註: 對於詳細的資訊, 像是: 螺紋型及法蘭型的法蘭尺寸等..... 請與我們聯絡。



## FEATURES

**MAX.PRESSURE 3600 psi (250 bar)**

Note: The maximum allowable pressure for the standard aluminum-alloy valves is 250 bar; we also supply the nodular ductile-iron and steel valves; contact our factory for details  
註: 標準閥體鋁合金最大壓力250bar, 另提供球墨鑄鐵及鋼製閥體, 請聯繫工廠。