

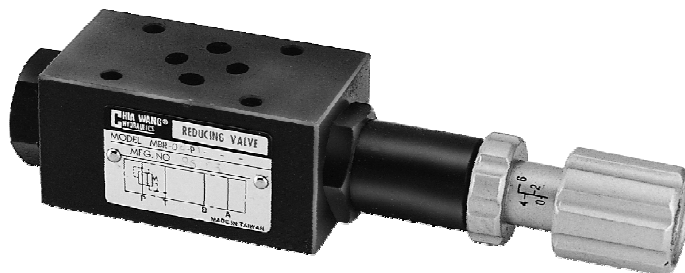
# PRESSURE REDUCING MODULAR VALVES

積層型減壓閥

MBR SERIES

## ◆ MODEL 型 式

MBR-02



## ◆ FEATURES

- MBR series modular reducing valves can be used to reduce pressure the "P" port, "A" port, or "B" port.
- Casting iron bodies are provided strength and durability for longer life.
- Internal hardened steel components also provide durable life.
- Three standard pressure setting options are available.
- Two pressure adjustment options are: hex. screw or knob.

- 特 點
- MBR系列積層型減壓閥可使用 P孔、A孔、B孔 減少壓力。
- 閥本體鑄鐵強度夠且耐久性，壽命長。
- 內部硬鋼原件提高產品壽命。
- 三種標準壓力設定選擇。
- 六角螺絲或把手兩種壓力調整選擇。

## ◆ SPECIFICATIONS 規 格

Model Number 型式號碼	Maximum Pressure 最大壓力 bar	Connecting PT 適用管徑	Maximum Flow 最大流量 lpm	Weight 重量 Kg
MBR-02-P	315 (4500 psi)	1/4"	40 (10.58 gpm)	1.2 (2.7 lbs)
MBR-02-A				
MBR-02-B				
Fluid Type 流體型式		ISO VG 32, 46, 68		
Viscosity 黏性 cSt		10~400 (59~1854 SSU)		
Operating Temperature 操作溫度 °C		-30~100 (-22~212°F)		
Contamination Level 污染標準		ISO4406. 21/19/16 NAS1638,10		
Surface Treatment 表面處理		Zinc Phosphate Compound 鋅 磷酸鹽 化合物		

- All screws with metric measure , if require inch measure , please contact us.  
所附螺絲皆為公制標準規格品，若需英制螺絲請另外備註說明。

## ◆ HOW TO ORDER 編號說明

1	2	3	4	5	6	7	8
MBR	02	P	1	*	*	2H	20

### 1 VALVE SERIES 系列名稱

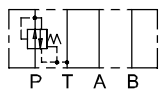
MBR=Pressure Reducing Modular Valves

### 2 SUBPLATE MOUNTING SIZE: 稱呼口徑

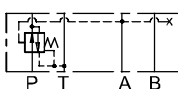
02=1/4"(6mm)  
ISO CETOP3  
DIN NG 6  
NFPA D03

### 3 CONTROL PORT(S) 動作形式

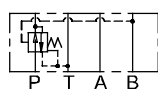
P=P Port Only



A=A Port Only



B=B Port Only



### 4 PRESSURE ADJUSTMENT 壓力調整範圍

1. 3 ~ 35 (bar)
2. 3 ~ 70 (bar)
3. 5~210 (bar)

### 5 SHAPE 調整部形狀

NONE:TOOL ADJUST 無：工具調整式  
K:HAND-BAR ADJUST K：手把調整式

### 6 ORIENTATION 調整部方向

NONE:B ORIENTATION (Standard) 無：B方向(標準型)  
L:A ORIENTATION L：A方向

### 7 LENGTH 調整部長度

NONE:STANDARD 無：標準長度  
2H: 3H: 4H:

### 8 DESIGN NO 設計編號

# PRESSURE REDUCING MODULAR VALVES

MBR SERIES

積層型減壓閥

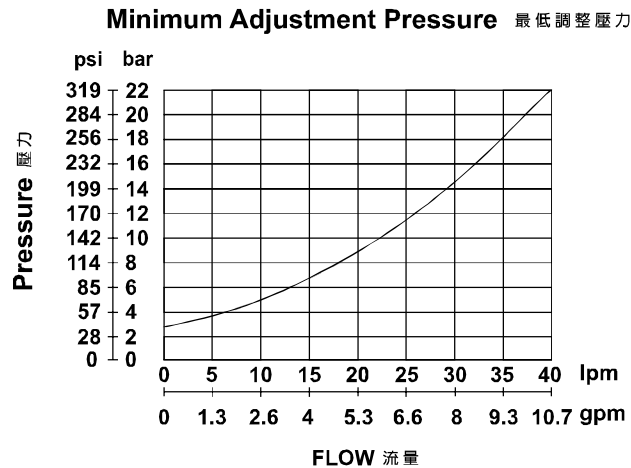
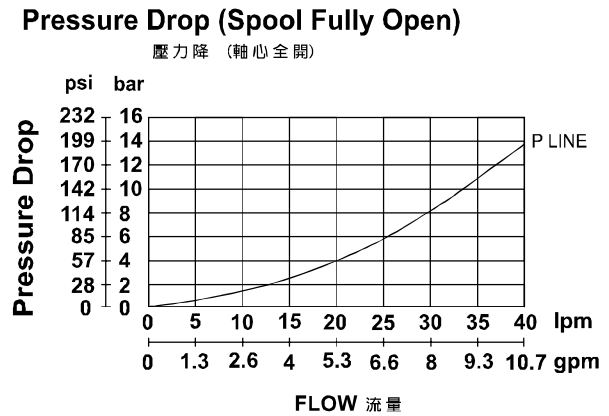
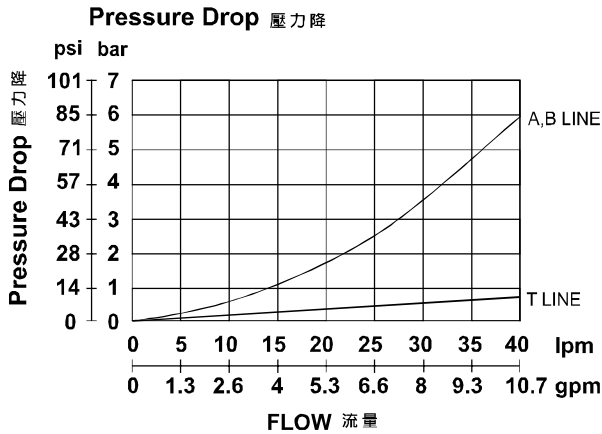
## ◆ PERFORMANCE 性能

Test Conditions 測試條件

Oil Temperature 油溫度: 50°C(122°F)

Viscosity 黏度: 35 cSt (163 SSU)

### MBR-02



### ● Pressure Setting

Facing to adjustment screw or knob, clockwise increasing pressure, counterclockwise decreasing pressure. Please tighten hex. nut or plastic setting nut after pressure adjusted.

### ● 壓力設定：

調整螺絲或把手順時鐘方向調整壓力增強，逆時鐘方向調整壓力減弱。

壓力調整後請鎖緊六角螺帽或塑膠安裝螺帽。

# PRESSURE REDUCING MODULAR VALVES

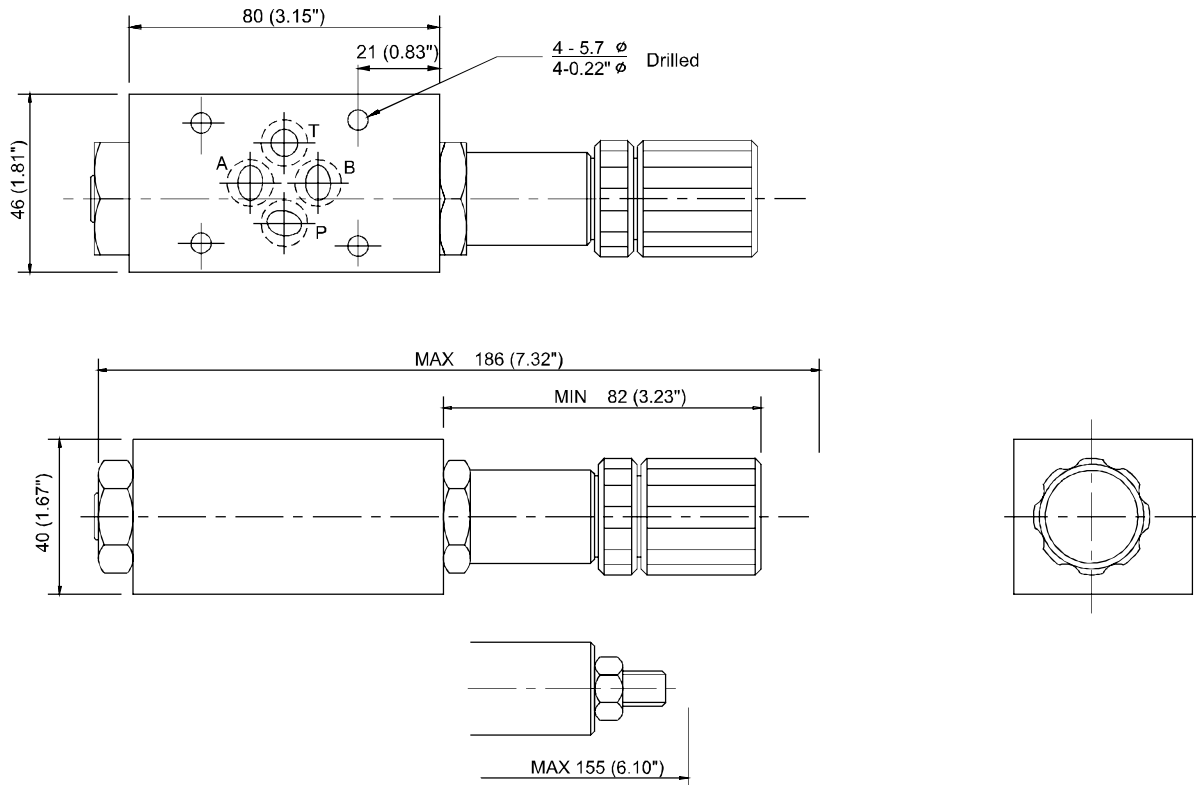
積層型減壓閥

MBR SERIES

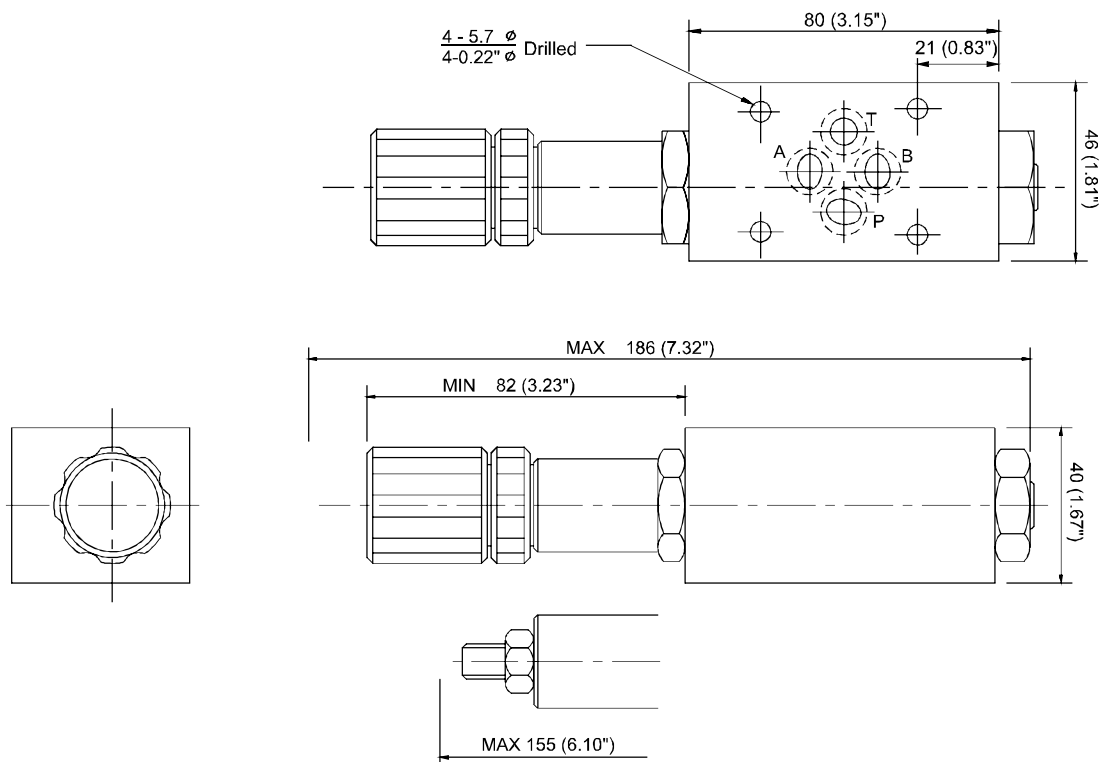
**B**  
**MBR**

## ◆ DIMENSIONS 外型尺寸圖

### MBR-02-\*\*-20



### MBR-02-\*\*-L-20



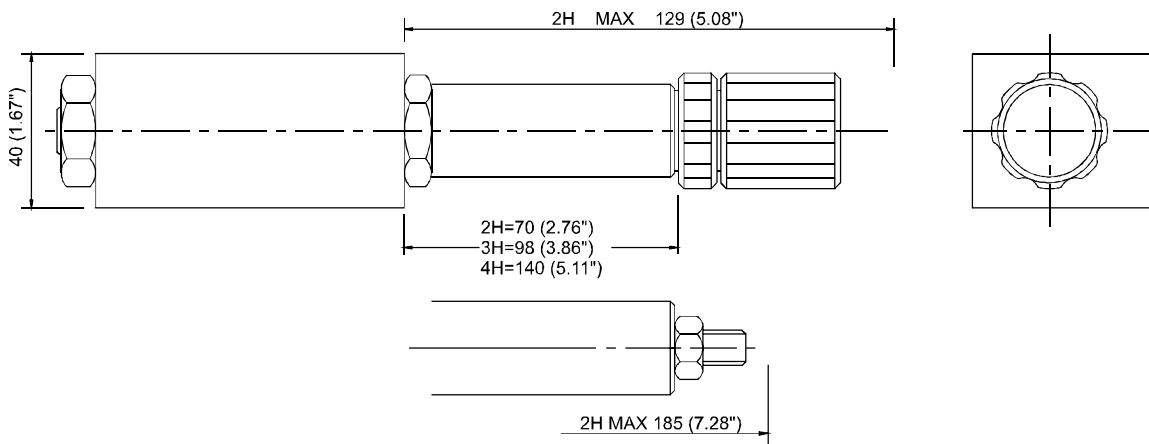
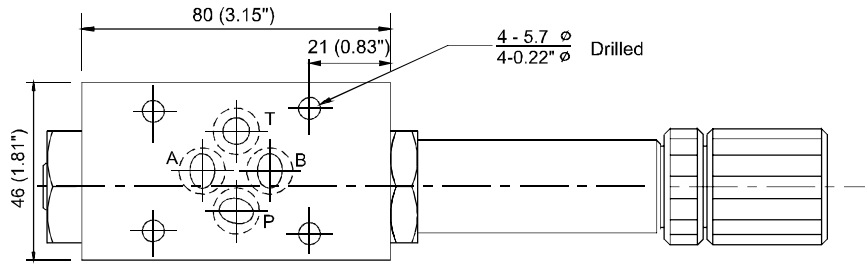
# PRESSURE REDUCING MODULAR VALVES

MBR SERIES

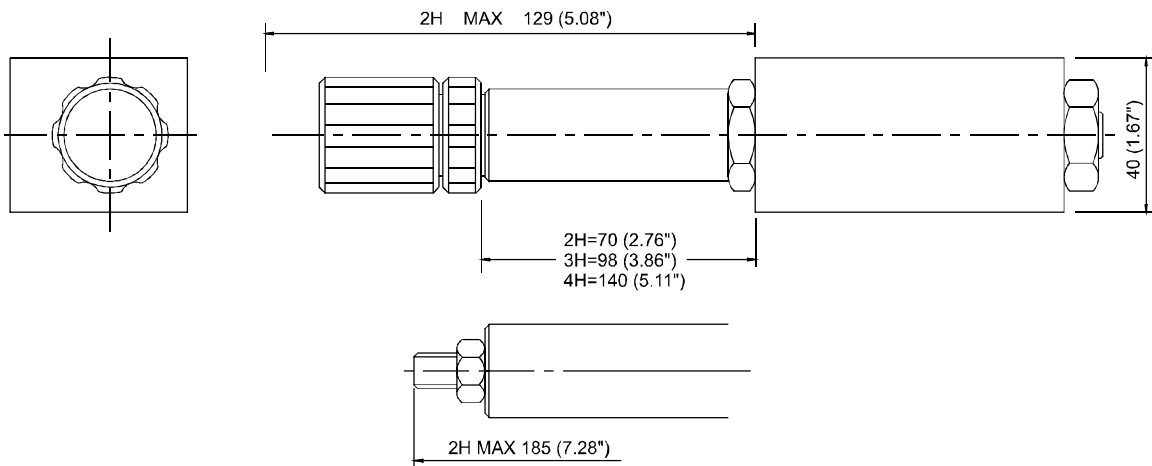
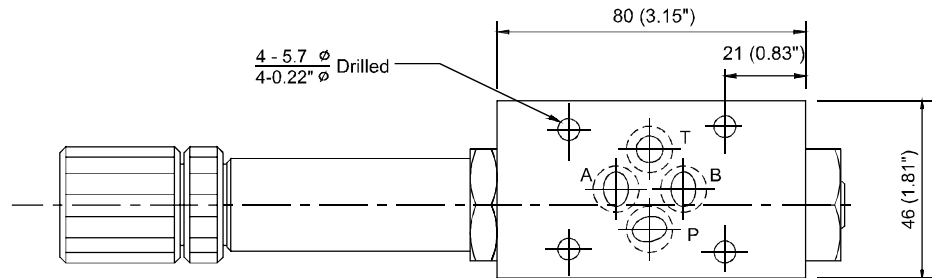
積層型減壓閥

## ◆ DIMENSIONS 外型尺寸圖

### MBR-02-\*\*-\*\*-H-20



### MBR-02-\*\*-L-\*\*-H-20



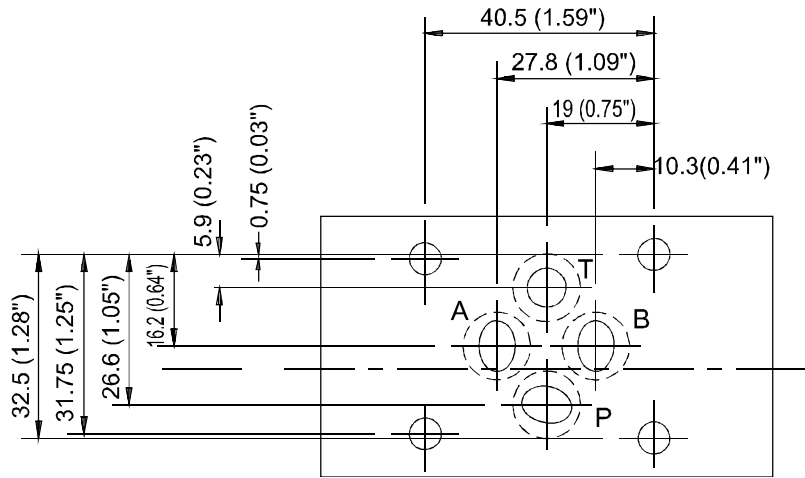
# PRESSURE REDUCING MODULAR VALVES

積層型減壓閥

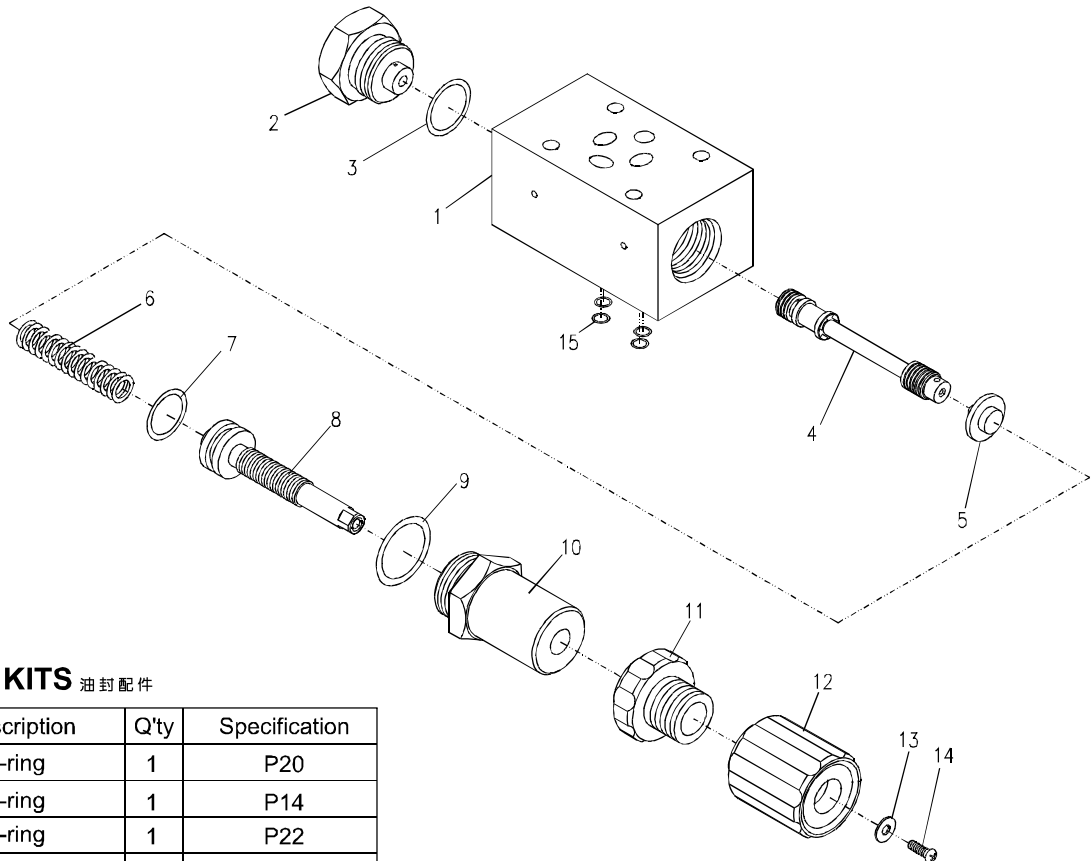
MBR SERIES

## ◆ Mounting Interface 基座尺寸圖

ISO 4401-AB-03-4-A



## ◆ PARTS LIST OF MBR-02 SERIES 零件爆炸視圖



## ◆ SEAL KITS 油封配件

NO	Description	Q'ty	Specification
3	O-ring	1	P20
7	O-ring	1	P14
9	O-ring	1	P22
15	O-ring	4	P9

B  
MBR