

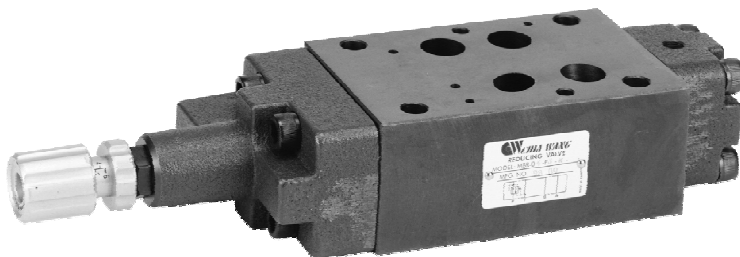
# PRESSURE REDUCING MODULAR VALVES

MBR SERIES

積層型減壓閥

## ◆ MODEL 型 式

MBR-04



## ◆ FEATURES

- MBR series modular reducing valves can be used to reduce pressure the "P" port, "A" port, or "B" port.
- Casting iron bodies are provided strength and durability for longer life.
- Internal hardened steel components also provide durable life.
- Three standard pressure setting options are available.
- Two pressure adjustment options are: hex. screw or knob.

- 特 點
- MBR系列積層型減壓閥可使用 P孔、A孔、B孔 減少壓力。
- 閥本體鑄鐵強度夠且耐久性，壽命長。
- 內部硬鋼原件提高產品壽命。
- 三種標準壓力設定選擇。
- 六角螺絲或把手兩種壓力調整選擇。

## ◆ SPECIFICATIONS 規 格

Model Number 型式號碼	Maximum Pressure 最大壓力 bar	Connecting PT 適用管徑	Maximum Flow 最大流量 lpm	Weight 重量 Kg
MBR-04-P	350 (4970 psi)	1/2"	300 (79.25 gpm)	7.5 (16.5 lbs)
MBR-04-A				
MBR-04-B				
Fluid Type 流體型式		ISO VG 32, 46, 68		
Viscosity 黏性 cSt		10~400 (59~1854 SSU)		
Operating Temperature 操作溫度 °C		-15~70 (-5~158°F)		
Contamination Level 污染標準		ISO4406. 21/19/16 NAS1638,10		
Surface Treatment 表面處理		Zinc Phosphate Compound 鋅 磷酸鹽 化合物		

- All screws with metric measure , if require inch measure , please contact us.

所附螺絲皆為公制標準規格品，若需英制螺絲請另外備註說明。

## ◆ HOW TO ORDER 編號說明

1	2	3	4	5	6
MBR	—	04	—	P	1 — * — 20

### 1 VALVE SERIES 系列名稱

MBR=Pressure Reducing Modular Valves

### 2 SUBPLATE MOUNTING SIZE: 稱呼口徑

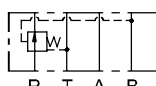
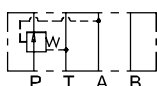
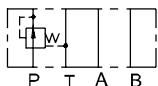
04=1/2"(12mm)  
ISO CETOP7  
DIN NG 16  
NFPA D07

### 3 CONTROL PORT(S) 動作形式

P=P Port Only

A=A Port Only

B=B Port Only



### 4 PRESSURE ADJUSTMENT 壓力調整範圍

1. 8 ~ 70 (bar)
2. 8~140 (bar)
3. 10~250 (bar)

### 5 SHAPE 調整部形狀

NONE:TOOL ADJUST 無：工具調整式  
K:HAND-BAR ADJUST K：手把調整式

### 6 DESIGN NO 設計編號

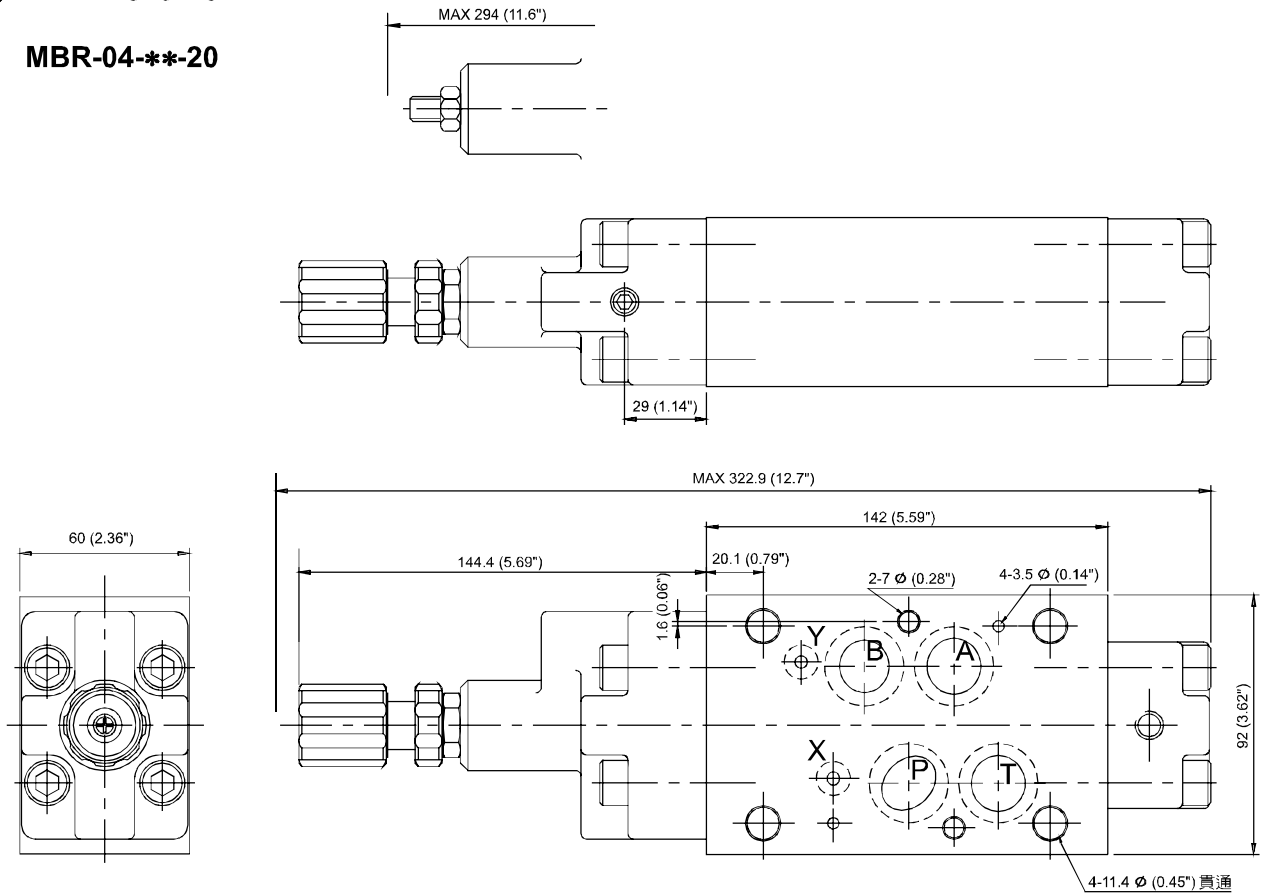
# PRESSURE REDUCING MODULAR VALVES

積層型減壓閥

MBR SERIES

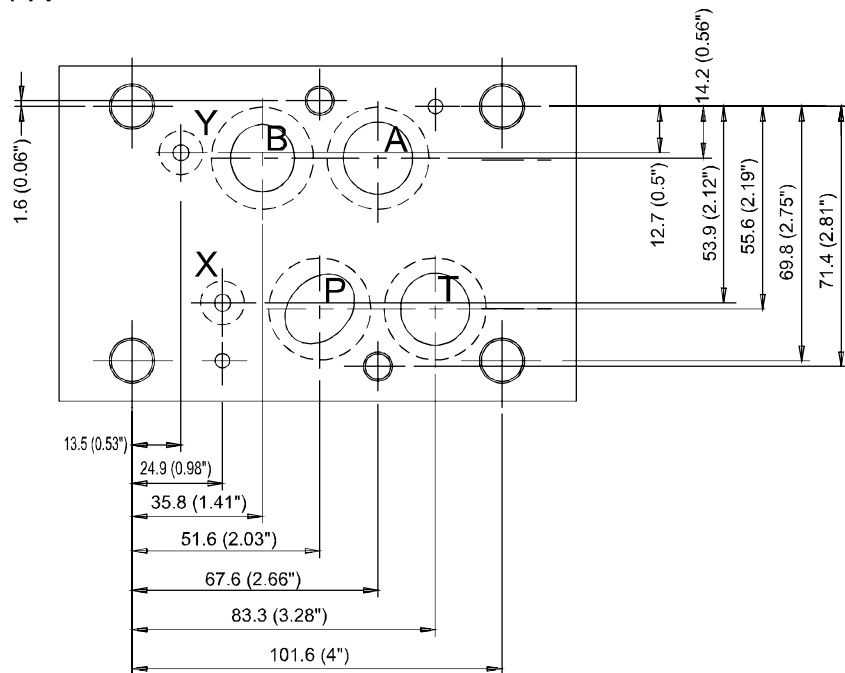
## ◆ DIMENSIONS 外型尺寸圖

MBR-04-\*\*-20



## ◆ Mounting Interface 基座尺寸圖

ISO 4401-AD-07-4-A



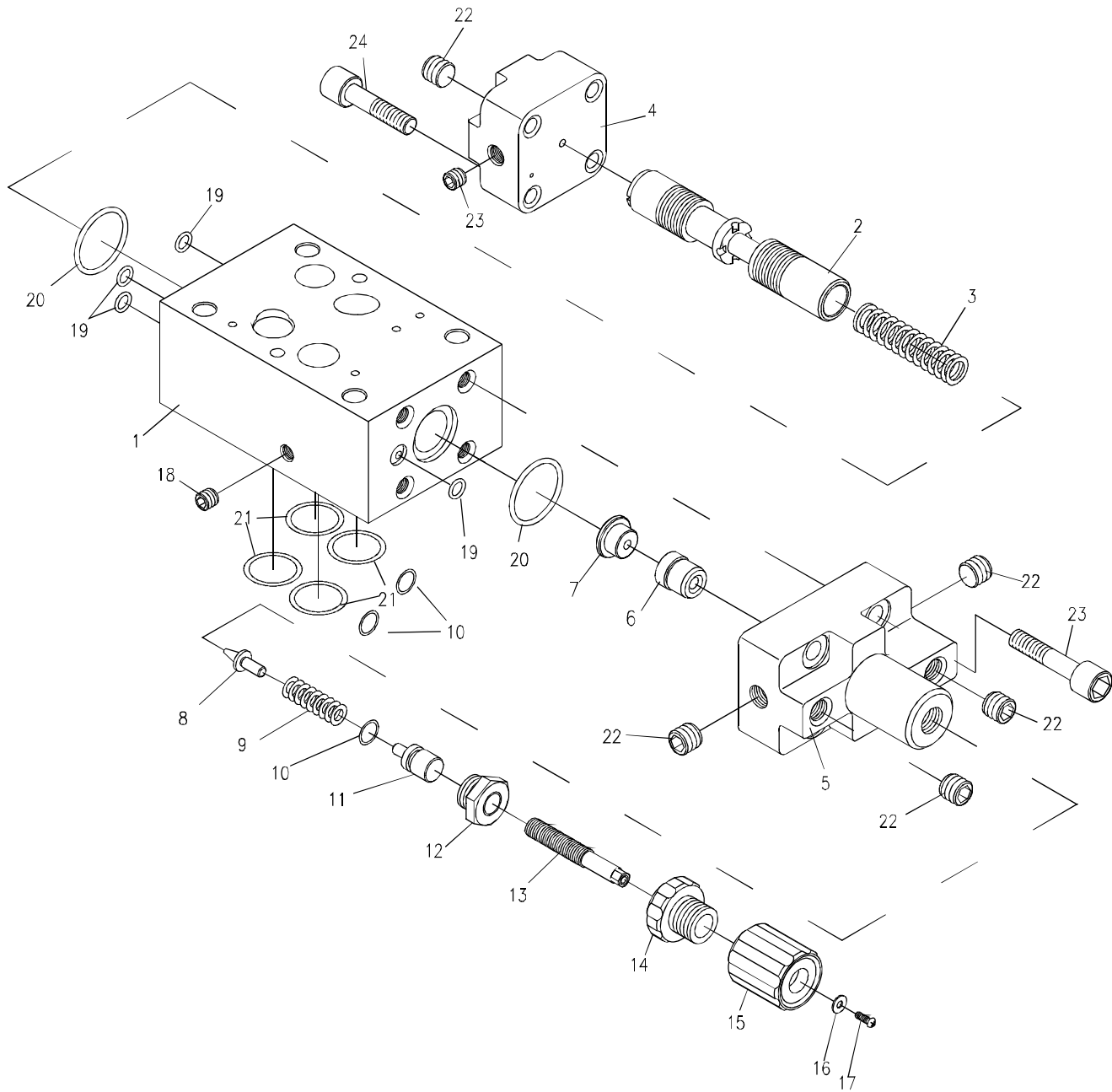
B  
MBR

# PRESSURE REDUCING MODULAR VALVES

MBR SERIES

積層型減壓閥

## ◆ PARTS LIST OF MBR-04 SERIES 零件爆炸視圖



## ◆ SEAL KITS 油封配件

NO	Description	Q'ty	Specification
10	O-ring	3	P9
19	O-ring	4	P8
20	O-ring	2	G25
21	O-ring	4	AS-119