

◆ **MODEL 型 式**
MCB-04B



◆ **FEATURES**

- MCB series modular counter balance valves can be used to reduce pressure on the "A" port .
- Casting iron valve bodies are provided strength and durability for longer life.
- Internal hardened steel components also provide durable life.
- Two standard pressure setting options are available.
- Two pressure adjustment options are:hex. screw or knob.

- 特 點
- MCB系列積層型抗衡閥可使用 A孔抗衡壓力。
- 閥本體鑄鐵堅韌且耐久性、壽命長。
- 內部硬鋼零件提高產品壽命。
- 二種標準壓力設定選擇。
- 六角螺絲或把手兩種壓力調整選擇。

◆ **SPECIFICATIONS 規 格**

Model Number 型 式 號 碼	Maximum Pressure 最大壓力 bar	Connecting PT 適用管徑	Maximum Flow 最大流量 lpm	Weight 重 量 Kg
MCB-04-A	315 (4500 psi)	1/2"	300 (79.25 gpm)	7.5 (16.53 lbs)
Fluid Type 液體型式			ISO VG 32 , 46 , 68	
Viscosity 黏 性 cSt			10~400 (59~1854 SSU)	
Operating Temperature 操作溫度 °C			-15~70 (-5~158°F)	
Contamination Level 污染標準			ISO4406. 21/19/16 NAS1638,10	
Surface Treatment 表面處理			Zinc Phosphate Compound 鋅 磷 酸 鹽 化 合 物	

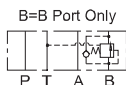
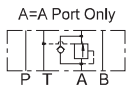
◆ **HOW TO ORDER 購 號 說 明**

1	2	3	4	5	6
MCB	04	B	1	*	20

1 VALVE SERIES 系列名稱
MCB=Counterbalance Modular Valves

2 SUBPLATE MOUNTING SIZE: 插接口徑
04 = 1/2"(12mm)
ISO CETOP7
DIN NG 16
NFPA D07

3 ACTION FORM 動作形式



4 PRESSURE ADJUSTMENT 壓力調整範圍
1. 8~70 (bar)
2. 10~140 (bar)

5 SHAPE 調整部形狀
NONE:TOOL ADJUST 無；工具調整式
K:HAND-BAR ADJUST K；手把調整式

6 DESIGN NO 設計編號

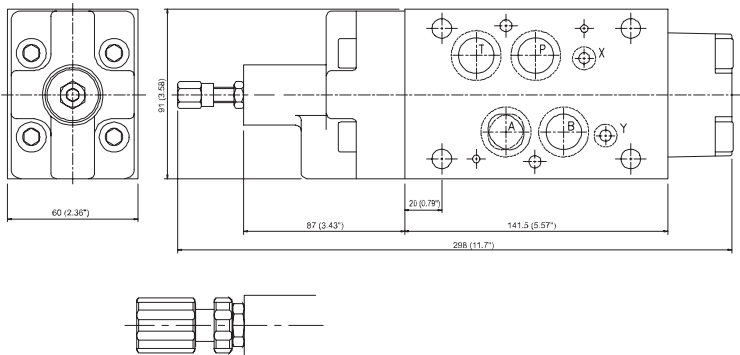
COUNTERBALANCE MODULAR VALVES

MCB SERIES

積層型抗衡閥

◆ DIMENSIONS 外形尺寸圖

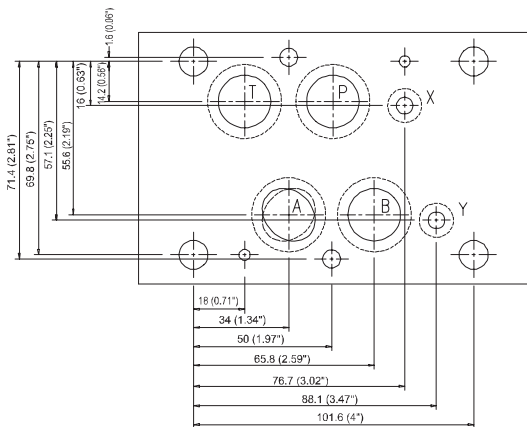
MCB-04-A



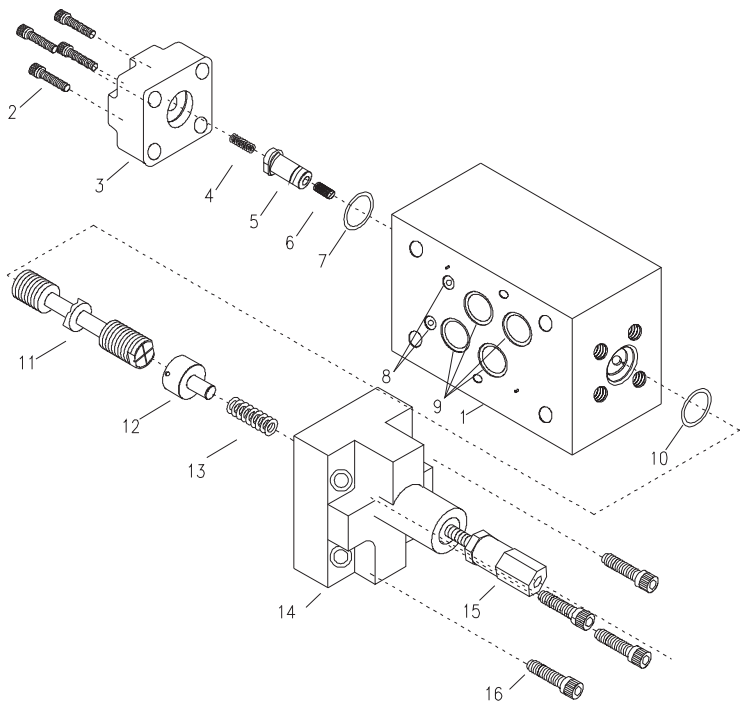
◆ Mounting Interface 基準尺寸圖

ISO 4401-AD-07-4-A

MCB-04



◆ PARTS LIST OF MCB-04 A 零件爆炸视图



◆ SEAL KITS 密封配件

NO	Description	Q'ty	Specification
7	O-ring	1	G35
9	O-ring	4	AS119
10	O-ring	1	G35