

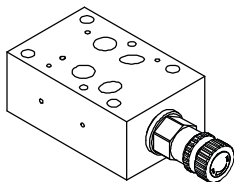
RELIEF MODULAR VALVES

MRV SERIES

稱 量 型 調 壓 閥

◆ MODEL 型 式

MRV-04



◆ FEATURES

- MRV series modular relief valves can be used to efficiently restrict the "P" port, "A" port, or "B" port or the pressure from "A" and "B" port to the oil tank.
- Casting iron valve bodies are provided strength and durability for longer life.
- Internal hardened steel components also provide durable life.
- Four standard pressure setting options are available.
- Two pressure adjustment options are: hex. screw or knob.
- 特 點
- MRV系列模塊式調壓閥可使用 P孔、A孔、B孔 或 A-B孔至油箱
- 和A-B孔交叉有效的限制壓力。
- 閥本體鑄鐵強度好且持久性、壽命長。
- 內部硬鋼零件提高產品壽命。
- 二種標準壓力設定選擇。
- 八角螺絲或把手兩種壓力調整選擇。

◆ SPECIFICATIONS 規 格

Model Number 型式號碼	Maximum Pressure 最大壓力 bar	Connecting PT 應用管徑	Maximum Flow 最大流量 lpm	Weight 重量 Kg
MRV-04- P, A, B	420 (6092 psi)	1/2"	300 (79.25 gpm)	6 (13.2 lbs)
Fluid Type 液體型式			ISO VG 32, 46, 68	
Viscosity 黏性 cSt			10~400 (59~1854 SSU)	
Operating Temperature 操作溫度 °C			-15~70 (-5~158°F)	
Contamination Level 污染標準			ISO4406, 21/19/16 NAS1638,10	
Surface Treatment 表面處理			Zinc Phosphate Compound 鋅磷酸鹽 化合物	

● All screws with metric measure, if require inch measure, please contact us.

所有螺絲皆為公制標準規格器。若需英制螺絲請另外備註說明。

◆ HOW TO ORDER 編號說明

1	2	3	4	5	6
MRV	— 04	— P	1	— K	— 20

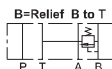
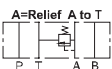
1 VALVE SERIES 系列名稱

MRV=Relief Modular Valves

2 SUBPLATE MOUNTING SIZE: 稱呼口徑

04 = 1/2" (12mm)
ISO CETOP7
DIN NG 16
NFPA D07

3 CONTROL PORT(S) 動作形式



4 ADJUSTMENT PRESSURE 壓力調整範圍

Order 編號	Adjustment pressure 壓力調整範圍
1	3~ 60 (bar)
2	5~ 100 (bar)
3	8 ~ 210 (bar)
4	12 ~ 420 (bar)

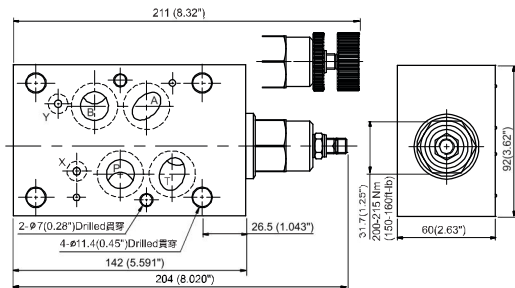
5 ADJUSTMENT OPTION 調整選擇

NONE	NONE TOOL ADJUST 無工具調整式	
K	K-HAND-BAR ADJUST K 手把調整式	

6 DESIGN NO 設計編號

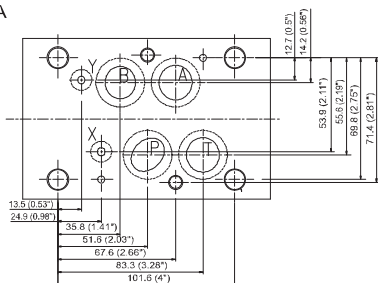
◆ DIMENSIONS 外形尺寸圖

MRV-04-P, A, B



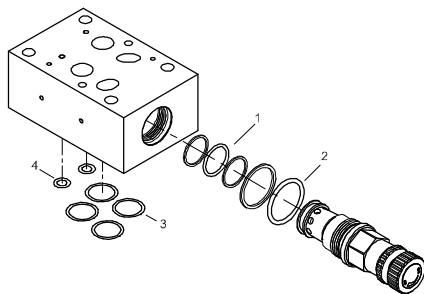
◆ Mounting Interface 基座尺寸圖

ISO 4401-AD-07-4-A



◆ PARTS LIST OF MRV-04P, A, B

零件爆炸視圖



◆ SEAL KITS 密封配件

NO	Description	Q'ty	Specification
1	O-ring	1	AS-121
2	O-ring	1	AS-124
3	O-ring	4	AS-119
4	O-ring	2	P9