

MODULAR OVERCENTRE VALVE PILOT ASSISTED RELIEF WITH CHECK

積層引導式抗衡閥

MVCB SERIES

◆ MODEL 型 式 MVCB-02



◆ FEATURES

- MVCB series modular overcentre valves pilot assisted relief with check can be used to reduce pressure on the "w" port, the "A" port, or the "B" port.
- Casting iron valve bodies are provided strength and durability for longer life.
- Internal hardened steel components also provide durable life.
- Three standard pressure setting options are available.
- Two pressure adjustment options are: hex. screw or knob.
- Assisted pilot is standard.

- 特 點
- MVCB積層型引導式抗衡閥可使用 W孔、A孔、B孔 抗衡壓力。
- 閥本體鑄鐵強度夠且耐久性，壽命長。
- 內部硬鋼原件提高產品壽命。
- 二種標準壓力設定選擇。
- 六角螺絲或把手兩種壓力調整選擇。
- 此閥付附輔助引導。

◆ SPECIFICATIONS 規 格

Model Number 型式號碼	Maximum Pressure 最大壓力 bar	Connecting PT 適用管徑	Pilot Ratio 引導比例	Maximum Flow 最大流量 lpm	Weight 重量 Kg
MVCB-02-A / B- *	350 (5076 psi)	1/4"	3:1 / 10:1	30 (7.92 gpm)	1.8 (3.97 lbs)
MVCB-02-W- *					2 (4.40 lbs)
MVCB-03-A / B- *		3/8"		60 (15.85 gpm)	3.1 (6.83 lbs)
MVCB-03-W- *					3.5 (7.72 lbs)
Fluid Type 液體型式			ISO VG 32 , 46 , 68		
Viscosity 黏性 cSt			10~400 (59~1854 SSU)		
Operating Temperature 操作溫度 °C			-30~100 (-22~212°F)		
Contamination Level 污染標準			ISO4406. 21/19/16 NAS1638,10		
Surface Treatment 表面處理			Zinc Phosphate Compound 鋅 磷酸鹽 化合物		

- All screws with metric measure , if require inch measure , please contact us.
所附螺絲皆為公制標準規格品，若需英制螺絲請另外備註說明。

◆ HOW TO ORDER 編號說明

1	2	3	4	5	6
MVCB	02	B	10	3A	20

1 VALVE SERIES 系列名稱

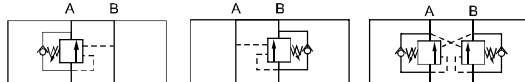
MVCB= Modular Overcentre Valve Pilot Assisted Relief With Check
基層引導式抗衡閥

2 SUBPLATE MOUNTING SIZE: 稱呼口徑

02 = 1/4"(6mm) 03 = 3/8"(9mm)
ISO CETOP3 ISO CETOP5
DIN NG 6 DIN NG 10
NFPA D03 NFPA D05

3 CONTROL PORT(S) 動作形式

A=A Port Only B=B Port Only W=A, B Port



4 ADJUSTMENT PRESSURE 壓力調整範圍

Check Spring Pressure 1.8bar 止逆閥彈簧壓力 1.8bar			Check Spring Pressure 0.3bar 止逆閥彈簧壓力 0.3bar		
Code 編碼	Adjustment pressure 壓力調整範圍	Pilot ratio 引導比例	Code 編碼	Adjustment pressure 壓力調整範圍	Pilot ratio 引導比例
06	※ ~ 60 (bar)	3:1	25	25 ~ 105 (bar)	1.5:1
10	25 ~ 105 (bar)	1.5:1	70	70 ~ 280 (bar)	2:1
28	70 ~ 280 (bar)	2:1	80	70 ~ 175 (bar)	3:1
17	70 ~ 175 (bar)	3:1	14	140 ~ 350 (bar)	2.3:1
35	140 ~ 350 (bar)	4.5:1			
		10:1			

5 PILOT RATIO 引導比例

- 1.5A : 1.5:1 (With sealed pilot) 導壓室密封
- 2A : 2:1 (With bleed through pilot) 透流導壓
- 2.3A : 2.3:1 (With sealed pilot) 導壓室密封
- 3A : 3:1 (With sealed pilot) 導壓室密封
- 4A : 4.5:1 (With sealed pilot) 導壓室密封
- 10A : 10:1 (With sealed pilot) 導壓室密封

6 DESIGN NO 設計編號

MODULAR OVERCENTRE VALVE PILOT ASSISTED RELIEF WITH CHECK

MVCB SERIES

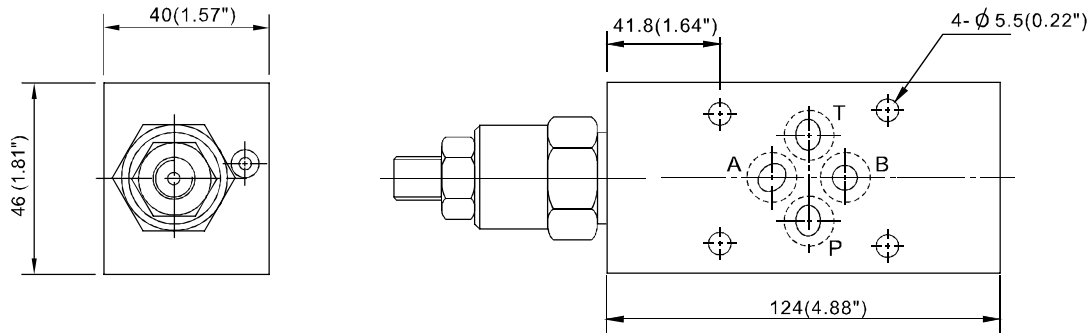
積層引導式抗衝閥

◆ DIMENSIONS 外型尺寸圖

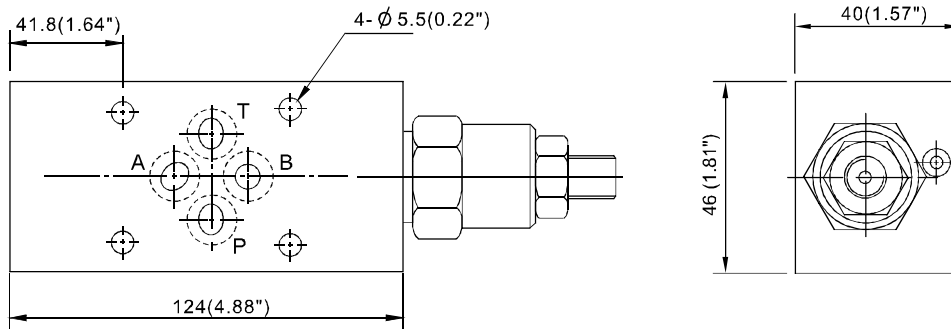
◆ Mounting Interface 基座尺寸圖

ISO 4401-AB-03-4-A

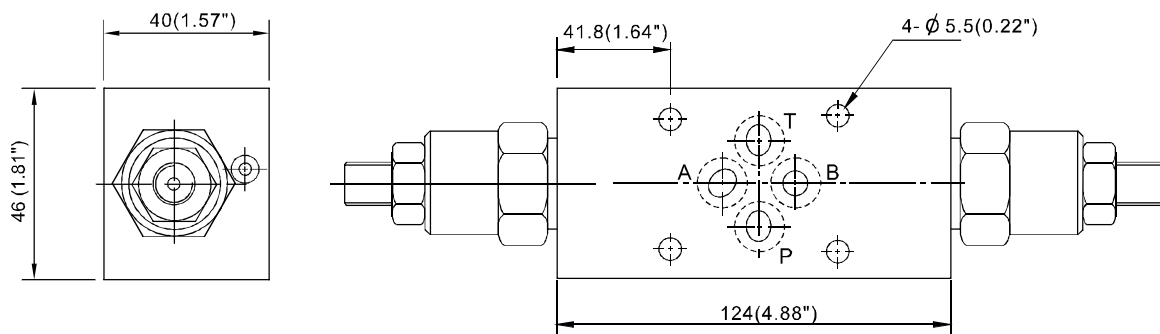
MVCB-02-A



MVCB-02-B



MVCB-02-W



MODULAR OVERCENTRE VALVE PILOT ASSISTED RELIEF WITH CHECK

積層引導式抗衝閥

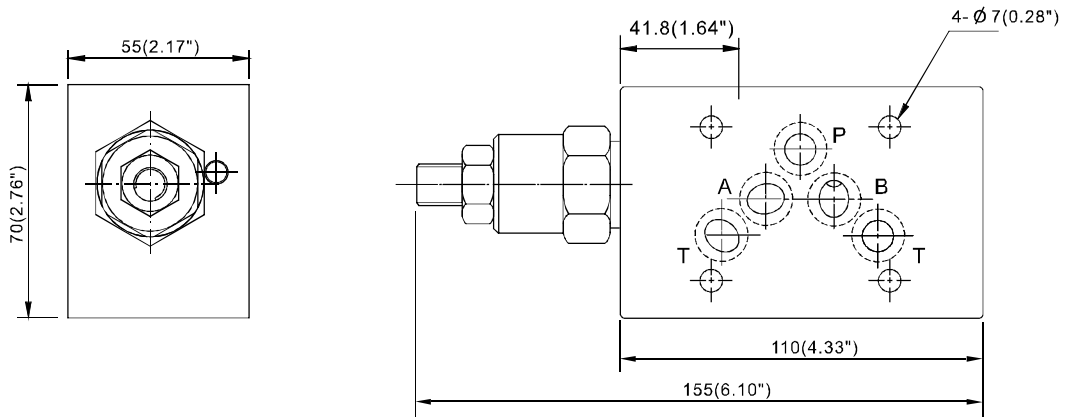
MVCB SERIES

DIMENSIONS 外型尺寸圖

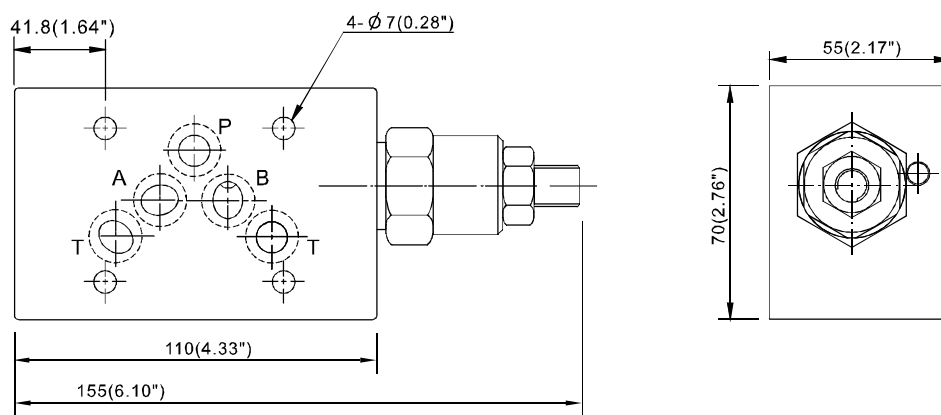
◆ Mounting Interface 基座尺寸圖

MVCB-03-A

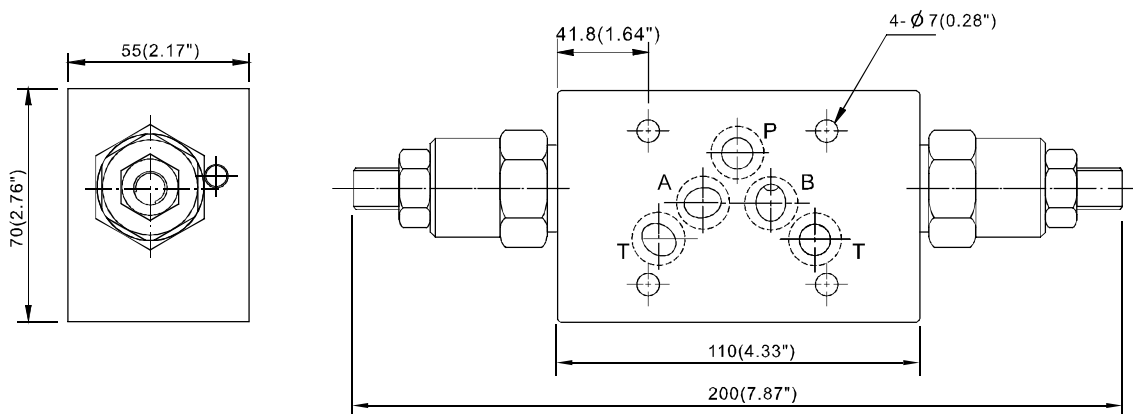
ISO 4401-AC-05-4-A



MVCB-03-B



MVCB-03-W



B
MVCB