

## ◆ MODEL 型 式

MCT-02P



## ◆ FEATURES

- MCT series modular control restrictors valves can be used for the "P" port.
- Casting iron valve bodies are provided strength and durability for longer life.
- Internal hardened steel components also provide durable life.

- 特 點
- MCT 系列節流型止逆節流閥均可使用 P 孔。
- 閥本體鑄鐵強度足夠且耐久性、壽命長。
- 內置硬鋼零件提高產品壽命。

## ◆ SPECIFICATIONS 規 格

Model Number 型式號碼	Maximum Pressure 最大壓力 bar	Connecting PT 適用管徑	Maximum Flow 最大流量 lpm	Weight 重 量 Kg
MCT-02-P	250 (3625 psi)	1/4"	50 (13.21 gpm)	1.2 (2.7 lbs)
Fluid Type 液體型式			ISO VG 32, 46, 68	
Viscosity 黏性 cSt			10~400 (59~1854 SSU)	
Operating Temperature 操作溫度 °C			-15~70 (-5~158 °F)	
Contamination Level 污染標準			ISO4406. 21/19/16 NAS1638,10	
Surface Treatment 表面處理			Zinc Phosphate Compound 鋅磷酸鹽 化合物	

● All screws with metric measure, if require inch measure, please contact us.

所有螺絲皆為公制標準規格品。若需英制螺絲請與外備註說明。

## ◆ HOW TO ORDER 編號說明



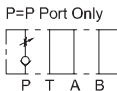
### 1 VALVE SERIES 系列名稱

MCT=Throttle With Check Modular Valves

### 2 SUBPLATE MOUNTING SIZE: 稱呼口徑

02 = 1/4"(6mm)  
ISO CETOP3  
DIN NG 6  
NFPA D03

### 3 CONTROL PORT(S) 動作形式



### 4 DESIGN NO 設計編號

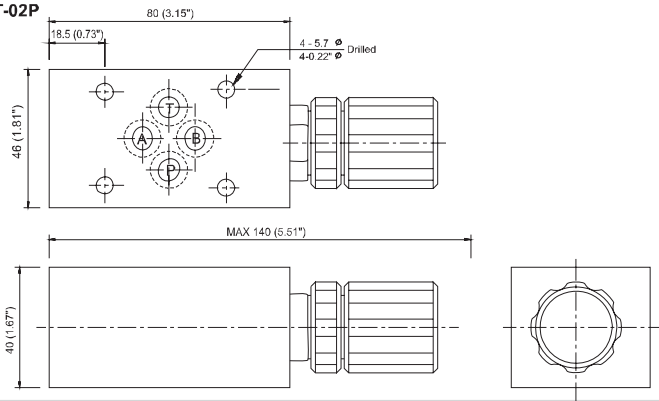
# THROTTLE WITH CHECK MODULAR VALVES

MCT SERIES

止逆節流閥

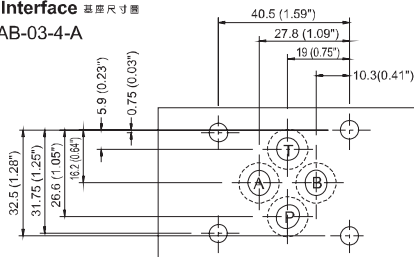
## ◆ DIMENSIONS 外型尺寸圖

MCT-02P



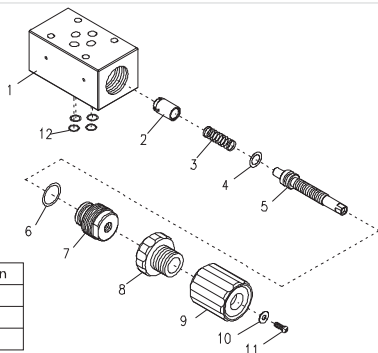
## ◆ Mounting Interface 基座尺寸圖

ISO 4401-AB-03-4-A



## ◆ PARTS LIST OF MCT-02P

零件爆炸圖



## ◆ SEAL KITS 密封配件

NO	Description	Q'ty	Specification
4	O-ring	1	P10
6	O-ring	1	P16
12	O-ring	4	P9