

# SOLENOID FLOW CONTROL VALVES

## MHF SERIES

電磁流量閥

### ◆ MODEL 型式 MHF-03



### ◆ FEATURES

- MHF series pressure temperature compensated solenoid flow control valves can be used for the "P" port, "T" port, or "A" port.
- Casting iron valve bodies are provided strength and durability for longer life.
- Internal hardened steel components also provide durable life.
- Two flow adjustment options are: hex. screw or knob.

- 特 點
- MHF 系列電磁流量閥(附壓力溫度補償)均可使用 P 孔、T 孔、A 孔。
- 閥本體鑄造強度高且持久性、壽命長。
- 內部硬質鋼件提高產品壽命。
- 六角螺絲或把手兩種流量調整選擇。

### ◆ SPECIFICATIONS 規格

Model Number 型式號碼	Maximum Pressure 最大壓力 bar	Connecting PT 適用管徑	Adjustment Flow 調整流量範圍 L/M	Maximum Flow 最大流量 lpm	Weight 重量 Kg
MHF-03- <b>*</b> -20	70 (1000 psi)	3/8"	0.1 ~ 4	50 (13.2 gpm)	2.3 (5.1 lbs)
MHF-03- <b>*</b> -10	210 (3046 psi)		0 ~ 35	40 (10.56 gpm)	2.3 (5.1 lbs)
MHF-03- <b>*</b> -30	250 (3625 psi)		0.1 ~ 30	70 (18.49gpm)	3 (6.6 psi)
<b>Fluid Type</b> 液體型式				ISO VG 32, 46, 68	
<b>Viscosity</b> 黏性 cSt				10~400 (59~1854 SSU)	
<b>Operating Temperature</b> 操作溫度 °C				-15~70 (-5~158 °F)	
<b>Contamination Level</b> 污染標準				ISO4406. 21/19/16 NAS1638,10	
<b>Surface Treatment</b> 表面處理				Zinc Phosphate Compound 鋅 磷酸鹽 化合物	

- All screws with metric measure, if require inch measure, please contact us.  
所有螺絲皆為公制標準規格品。若需英制螺絲請洽另外註說明。

### ◆ HOW TO ORDER 編號說明

1	2	3	4	5
MHF	03	*	**	20

#### 1 VALVE SERIES 系列名稱

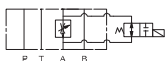
MHF= Solenoid Flow Control Valves

#### 2 SUBPLATE MOUNTING SIZE: 磅吋口徑

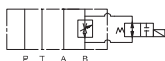
03 = 3/8"(9mm)  
ISO CETOP5  
DIN NG 10  
NFPA D05

#### 3 CONTROL PORT(S) 動作形式

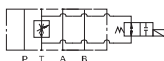
A=A Port Only



B=B Port Only



T=T Port Only



P=P Port Only



#### 4 TYPE OF COIL 電磁線圈類型

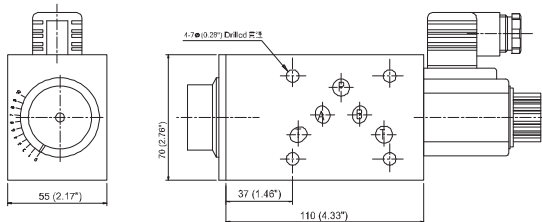
A1:AC110 D1:DC12  
A2:AC220 D2:DC24

#### 5 DESIGN NO 設計編號

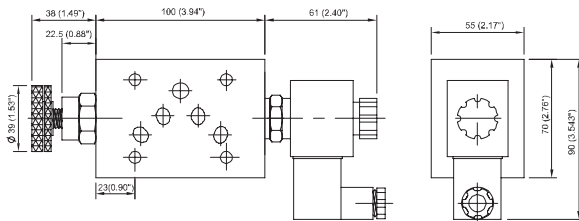
- 20 : Pressure temperature compensation is provided.  
附壓力溫度補償
- 10 : Pressure temperature compensation is not provided.  
不附壓力溫度補償
- 30 : Pressure temperature compensation is provided.  
附壓力溫度補償

## ◆ DIMENSIONS 外型尺寸圖

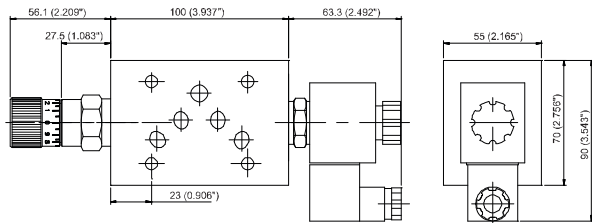
MHF-03-A-20 / MHF-03-T-20 / MHF-03-P-20



MHF-03-A-10 / MHF-03-B-10 / MHF-03-T-10 / MHF-03-P-10



MHF-03-A-30 / MHF-03-B-30 / MHF-03-T-30 / MHF-03-P-30



## ◆ Mounting Interface 基礎尺寸圖

ISO 4401-AC-05-4-A

