

# PRESSURE TEMPERATURE COMPENSATED FLOW CONTROL VALVES

## MOF SERIES

精層型節流閥附壓力溫度補償

### ◆ MODEL 型 式

MOF-02-P



### ◆ FEATURES

- MOF series pressure temperature compensated flow control valves can be used for the "P" port.
- Casting iron valve bodies are provided strength and durability for longer life.
- Internal hardened steel components also provide durable life.
- 特 點
- MOF 系列精層型節流閥附壓力溫度補償可應用 P 孔。
- 鑄本體鑄鋼強度與壽命長。
- 內部硬鋼零件提高壽命。

### ◆ SPECIFICATIONS 規 格

Model Number 型式號碼	Maximum Pressure 最大壓力 bar	Connecting PT 通用管徑	Control Flow 控制流量 lpm	Weight 重量 Kg
MOF-02-P	250 (3625 psi)	1/4"	0.1~20(ΔP: 70bar) 0.3~20(ΔP: 210bar)	1.2 (2.7 lbs)
Fluid Type 液體型式			ISO VG 32, 46, 68	
Viscosity 黏性 cSt			10~400 (59~1854 SSU)	
Operating Temperature 操作溫度 °C			-15~70 (-5~158 °F)	
Contamination Level 污染標準			ISO4406. 2/1/19/16 NAS1638,10	
Surface Treatment 表面處理			Zinc Phosphate Compound 鋅磷鹽 化合物	

- All screws with metric measure, if require inch measure, please contact us.  
所有螺絲皆為公制標準規格品，若需英制螺絲請另外備註說明。

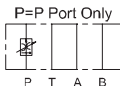
### ◆ HOW TO ORDER 編號說明

1	2	3	4
MOF	02	P	20

- 1 VALVE SERIES** 系列名稱  
MOF= Pressure Temperature Compensated Flow Control Valves

- 2 SUBPLATE MOUNTING SIZE:** 稱呼口徑  
02=1/4"(6mm)  
ISO CETOP3  
DIN NG 6  
NFPA D03

- 3 CONTROL PORT(S)** 動作形式



- 4 DESIGN NO** 設計編號

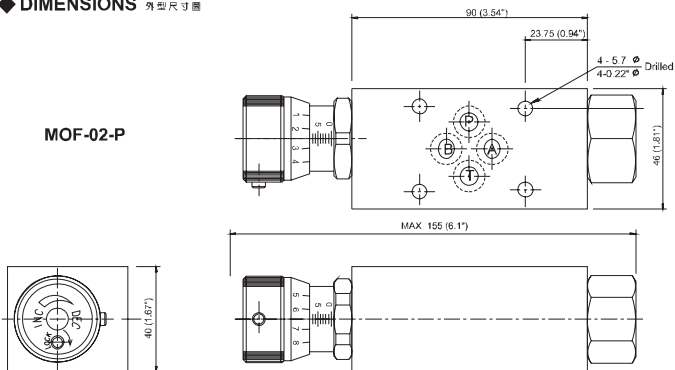
# PRESSURE TEMPERATURE COMPENSATED FLOW CONTROL VALVES

積層型節流閥附壓力溫度補償

MOF SERIES

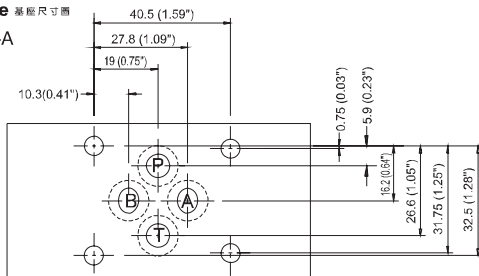
## ◆ DIMENSIONS 外型尺寸圖

MOF-02-P



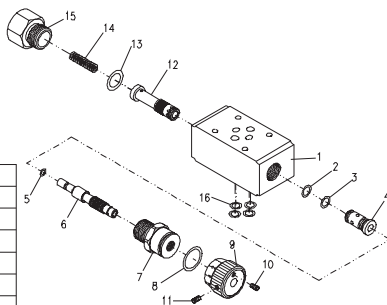
## ◆ Mounting Interface 基座尺寸圖

ISO 4401-AB-03-4-A



## ◆ PARTS LIST OF MOF-02-P

零件爆炸視圖



## ◆ SEAL KITS 油封配件

NO	Description	Q'ty	Specification
2	O-ring	1	P9
3	O-ring	1	P9
5	O-ring	1	P4
8	O-ring	1	P21
13	O-ring	1	P18
16	O-ring	4	P9

C  
MOF