

# THROTTLE WITH CHECK MODULAR VALVES

止逆節流閥

MTC SERIES

## ◆ MODEL 型 式



## ◆ FEATURES

- MTC series modular flow control valves can be used for the "A" port, or "B" port respectively or the "A" port and "B" port jointly.
- Casting iron valve bodies are provided strength and durability for longer life.
- Internal hardened steel components also provide durable life.
- Two flow adjustment options are: hex. screw or knob.

- 特 點
- MTC系列模塊型流量閥均可使用 A/B、B/A 和 A與B同時使用。
- 閥本體鑄鐵強度夠且耐久性，壽命長。
- 內置硬鋼零件提高產品壽命。
- 六角螺絲或把手兩種流量調整選擇。

## ◆ SPECIFICATIONS 規 格

Model Number 型式號碼	Maximum Pressure 最大壓力 bar	Connecting PT 適用管徑	Maximum Flow 最大流量 lpm	Weight 重 量 Kg
MTC-02-A, B	250 (3625 psi)	1/4"	40 (10.56 gpm)	1.2 (2.7 lbs)
MTC-02-W				1.4 (3.1 lbs)
MTC-02-A1, B1				1.2 (2.7 lbs)
MTC-02-W1				1.4 (3.1 lbs)
Fluid Type 液體型式		ISO VG 32, 46, 68		
Viscosity 黏性 cSt		10~400 (59~1854 SSU)		
Operating Temperature 操作溫度 °C		-15~70 (-5~158° F)		
Contamination Level 污染標準		ISO4406, 21/19/16 NAS1638,10		
Surface Treatment 表面處理		Zinc Phosphate Compound 磷 鎂鹽 化合物		

- All screws with metric measure, if require inch measure, please contact us.

所附最新版加工圖標準規格型，若需定制請洽詢另外備註說明。

## ◆ HOW TO ORDER 編裝說明

1	2	3	4	5	6
MTC	— 02	— W	I	— *	— 20

### 1 VALVE SERIES 系列名稱

MTC=Throttle With Check Modular Valves

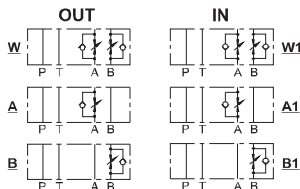
### 2 SUBPLATE MOUNTING SIZE: 前罩口徑

02 = 1/4"(6mm)  
ISO CETOP3  
DIN NG 6  
NFPA D03

### 4 ACTION ORIENTATION 動作方向

NONE : OIL OUT 無 出油控制  
I : OIL IN I 入油控制

### 3 ACTION FORM 動作形式



### 5 SHAPE 調整部形狀

NONE: TOOL ADJUST 無 工具調整式  
K: HAND-BAR ADJUST K 手把調整式

### 6 DESIGN NO 設計編號

C  
MTC

# THROTTLE WITH CHECK MODULAR VALVES

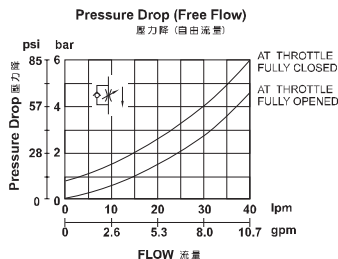
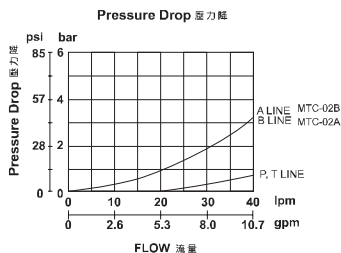
MTC SERIES

止逆節流閥

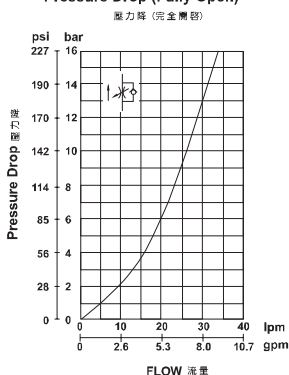
## ◆ PERFORMANCE 性能

Test Conditions 測試條件  
 Oil Temperature 油溫: 50°C (122°F)  
 Viscosity 黏度: 35 cSt (163 SSU)

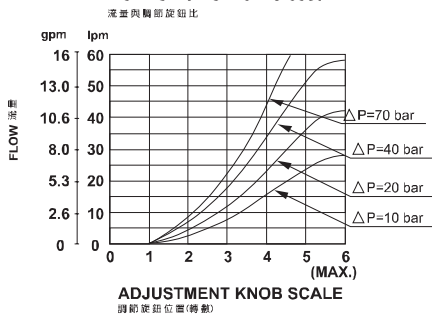
MTC-02



## Pressure Drop (Fully Open) 壓力降 (完全開啟)



## Flow vs. Turns From Closed 流量與調節旋鈕比



MTC-02-A, B, W

### ● Flow Setting

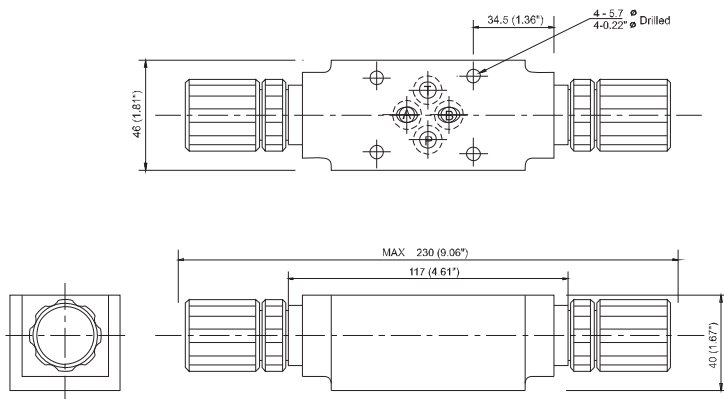
Facing to adjustment screw or knob, clockwise decreasing flow or counterclockwise increasing flow. Please tighten hex. nut or plastic setting nut up on completion of flow adjusted.

### ● 流量設定:

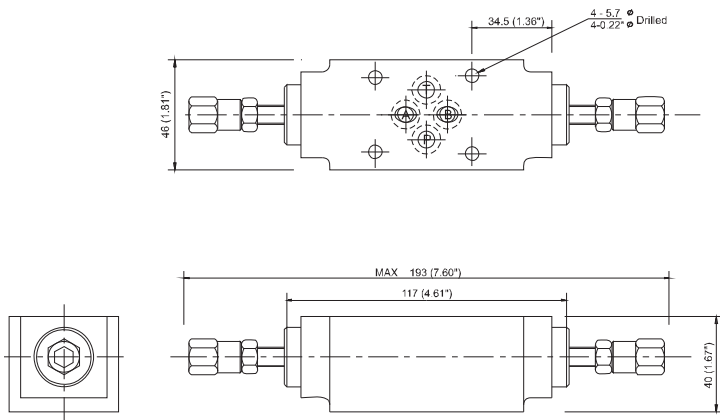
調整螺絲或把手順時鐘方向調整流量減少, 逆時鐘方向調整流量增加。  
 壓力調整後請鎖緊六角螺絲或塑膠安裝螺帽。

◆ DIMENSIONS 外型尺寸圖

MTC-02-W-K



MTC-02-W



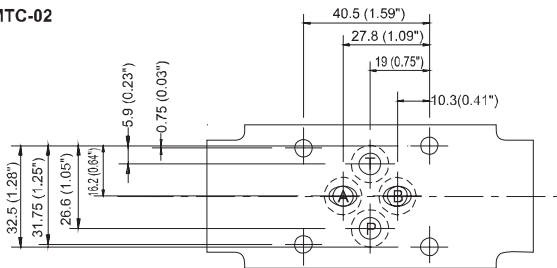
# THROTTLE WITH CHECK MODULAR VALVES

MTC SERIES

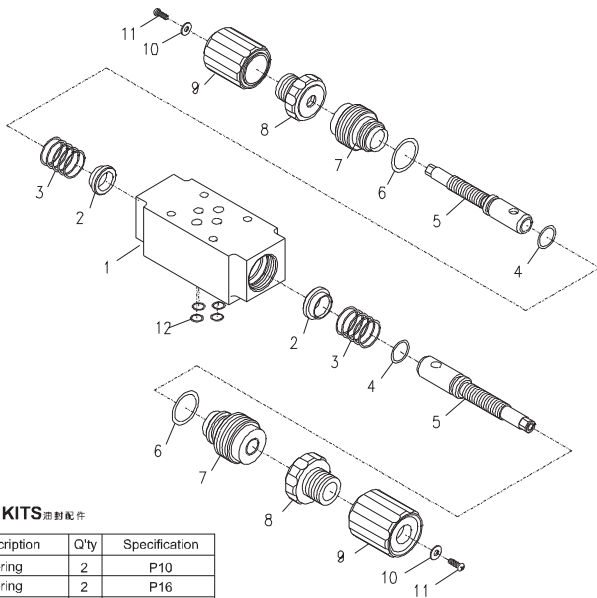
止逆節流閥

## ◆ Mounting Interface 基準尺寸圖

ISO 4401-AB-03-4-A  
MTC-02



## ◆ PARTS LIST OF MTC-02 SERIES 零件爆炸視圖



## ◆ SEAL KITS 密封配件

NO	Description	Q'ty	Specification
4	O-ring	2	P10
6	O-ring	2	P16
12	O-ring	4	P9