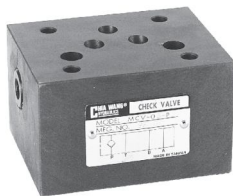


## ◆ MODEL 型 式

MCV-03



## ◆ FEATURES

- MCV series modular check valves can be used for all the ports including the "P" port, "T" port, or "D" port, etc..
- Casting iron valve bodies are provided strength and durability for longer life.
- Internal hardened steel components also provide durable life.

- 特 點
- MCV系列積層型止逆閥 P孔、T孔、A孔、B孔、W孔、C孔、D孔等...均可應用。
- 鑄本體强度高並具有堅久性、壽命長。
- 內部鑲鋼元件提高產品壽命。

## ◆ SPECIFICATIONS 規 格

Model Number 型 式 號 碼	Maximum Pressure 最大壓力 bar	Connecting PT 適用管徑	Maximum Flow 最大流量 lpm	Weight 重 量 Kg
MCV-03-P, T, C, D	315 (4500 psi)	3/8"	80 (21.10 gpm)	2.5 (5.5 lbs)
MCV-03-W, A, B				2.8 (6.2 lbs)
Fluid Type 液體型式		ISO VG 32, 46, 68		
Viscosity 黏性 cSt		10~400 (59~1854 SSU)		
Operating Temperature 操作溫度 °C		-15~70 (-5~158 °F)		
Contamination Level 污染標準		ISO4406, 21/19/16 NAS1638,10		
Surface Treatment 表面處理		Zinc Phosphate Compound 磷 鍍 鹽 化 合 物		

● All screws with metric measure, if require inch measure, please contact us.

所 附 螺 絲 皆 為 公 制 標 準 規 格 為，若 需 英 制 螺 絲 請 另 外 備 註 說 明。

## ◆ HOW TO ORDER 編號說明

1	2	3	4	5
MCV	03	P	1	20

**1 VALVE SERIES** 系列名稱  
MCV=Check Modular Valves

**4 SPRING PRESSURE** 彈力  
1. 0.5 (bar)  
2. 2.5 (bar)  
3. 4 (bar)

**2 SUBPLATE MOUNTING SIZE:** 稱呼口徑  
03 = 3/8"(9mm)  
ISO CETOP5  
DIN NG 10  
NFPA D05

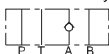
**5 DESIGN NO** 設計編號

**3 ACTION FORM** 動作形式

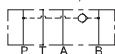
P=P Port Only



A=A Port Only



C=Relief P, B to T



W=Relief A, B to T



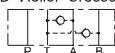
T=T Port Only



B=B Port Only



D=Relief Crossover



# CHECK MODULAR VALVES

MCV SERIES

積層型止逆閥

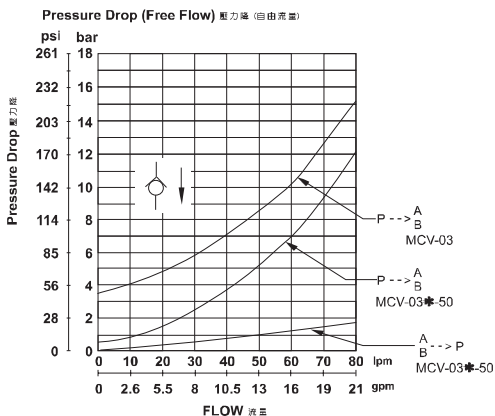
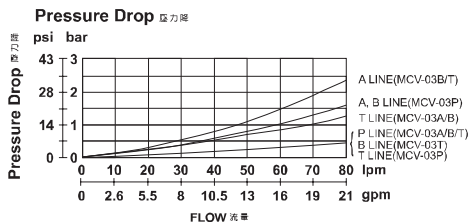
## ◆ PERFORMANCE 性能

Test Conditions 測試條件

Oil Temperature 油溫度: 50°C (122°F)

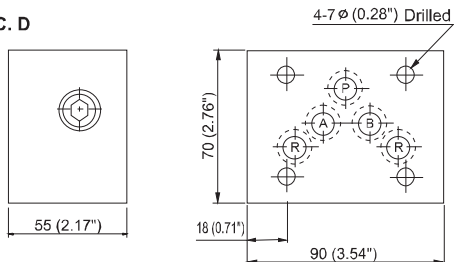
Viscosity 黏度: 35 cSt (163 SSU)

MCV-03



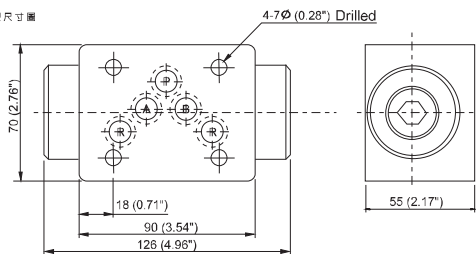
## ◆ DIMENSIONS 外型尺寸圖

MCV-03-P. T. C. D



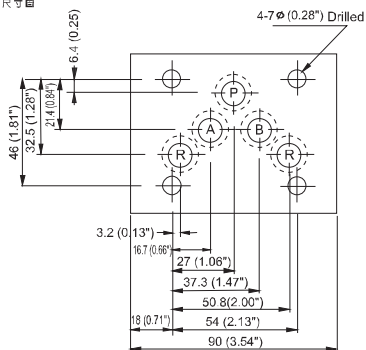
### ◆ DIMENSIONS 外型尺寸圖

MCV-03-W. A. B

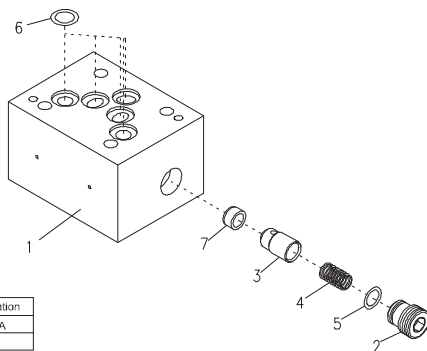


### ◆ Mounting Interface 基準尺寸圖

ISO 4401-AB-03-4-A



### ◆ PARTS LIST OF MCV-03 SERIES 零件爆炸視圖



### ◆ SEAL KITS 密封配件

NO	Description	Qty	Specification
5	O-ring	1	P10A
6	O-ring	5	P12