

# CHECK MODULAR VALVES

MCV SERIES

積層型止逆閥

## ◆ MODEL 型 式

MCV-04



## ◆ FEATURES

- MCV series modular check valves can be used for the "P" port .
  - Casting iron valve bodies are provided strength and durability for longer life.
  - Internal hardened steel components also provide durable life.
- 特 點
  - MCV系列積層型止逆閥 P孔可使用。
  - 鑄本體結構強韌與自耐用性，壽命長。
  - 內部硬鋼原件提高產品壽命。

## ◆ SPECIFICATIONS 規 格

Model Number 型式號碼	Maximum Pressure 最大壓力 bar	Connecting PT 適用管徑	Maximum Flow 最大流量 lpm	Weight 重量 Kg
MCV-04-P	315 (4500 PSI)	1/2"	300 (79.25 gpm)	4.8 (10.58 lbs)
Fluid Type 液體型式			ISO VG 32 , 46 , 68	
Viscosity 黏性 cSt			10~400 (59~1854 SSU)	
Operating Temperature 操作溫度 °C			-15~70 (-5~158 °F)	
Contamination Level 污染標準			ISO4406. 21/19/16 NAS1638,10	
Surface Treatment 表面處理			Zinc Phosphate Compound 磷 鋅酸鹽 化合物	

● All screws with metric measure , if require inch measure , please contact us.

所附螺絲皆為公制標準規格品，若需英制螺絲請另外備註說明。

## ◆ HOW TO ORDER 請按說明

1	2	3	4	5
MCV	— 04	— P	1	— 20

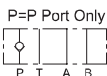
**1 VALVE SERIES** 系列名稱  
MCV=Check Modular Valves

**4 SPRING PRESSURE** 開啓力  
1. 0.5 (bar)  
2. 3.5 (bar)

**2 SUBPLATE MOUNTING SIZE:** 稱呼口徑  
04 = 1/2" (12mm)  
ISO CETOP7  
DIN NG 16  
NFPA D07

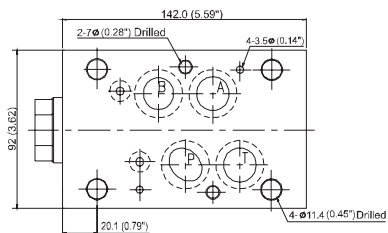
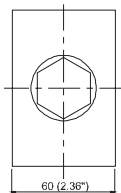
**5 DESIGN NO** 設計編號

**3 ACTION FORM** 動作形式



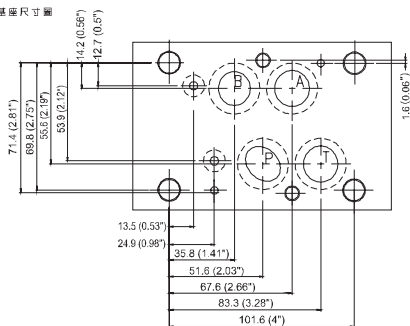
### ◆ DIMENSIONS 外型尺寸圖

MCV-04-P

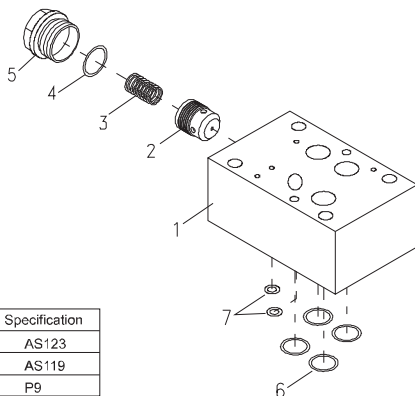


### ◆ Mounting Interface 基準尺寸圖

ISO 4401-AD-07-4-A



### ◆ PARTS LIST OF MCV-04 SERIES 零件爆炸視圖



### ◆ SEAL KITS 密封配件

NO	Description	Q'ty	Specification
4	O-ring	1	AS123
6	O-ring	5	AS119
7	O-ring	5	P9