

CHECK MODULAR VALVES

MCV SERIES

積層型止逆閥

◆ MODEL 型 式

MCV-06



◆ FEATURES

- MCV series modular check valves can be used for all the ports including the "P" port, "T" port, "A" port, "B" port, or "W" port, etc..
- Casting iron valve bodies are provided strength and durability for longer life.
- Internal hardened steel components also provide durable life.

- 特 點
- MCV系列積層型止逆閥 P孔、T孔、A孔、B孔、W孔均可使用。
- 閥本體鑄鐵強度好且耐久性、壽命長。
- 內部硬鋼零件提高產品壽命。

◆ SPECIFICATIONS 規 格

Model Number 型式號碼	Maximum Pressure 最大壓力 bar	Connecting PT 適用管徑	Maximum Flow 最大流量 lpm	Weight 重 量 Kg
MCV-06-P, T, MCV-06-W, A, B	315 (4500 psi)	3/4"	190 (50.19 gpm)	10.5 (23.1 lbs) 13 (28.6 lbs)
Fluid Type 液體型式		ISO VG 32, 46, 68		
Viscosity 黏性 cSt		10~400 (59~1854 SSU)		
Operating Temperature 操作溫度 °C		-15~70 (-5~158 °F)		
Contamination Level 污染標準		ISO4406, 21/19/16 NAS1638,10		
Surface Treatment 表面處理		Zinc Phosphate Compound 磷 磷酸鹽 化合物		

- All screws with metric measure, if require inch measure, please contact us.

所有螺絲皆為公制標準規格品，若需英制螺絲請另外備註說明。

◆ HOW TO ORDER 編號說明

1	2	3	4	5
MCV	06	P	1	20

1 VALVE SERIES 系列名稱

MCV=Check Modular Valves

4 SPRING PRESSURE 彈簧力

- 0.5 (bar)
- 3.5 (bar)

2 SUBPLATE MOUNTING SIZE: 補牌口徑

06= 3/4"(19mm)
ISO CETOP8
DIN NG 25
NFA D08

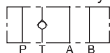
5 DESIGN NO 設計編號

3 ACTION FORM 動作形式

P=P Port Only



T=T Port Only



A=A Port Only



B=B Port Only

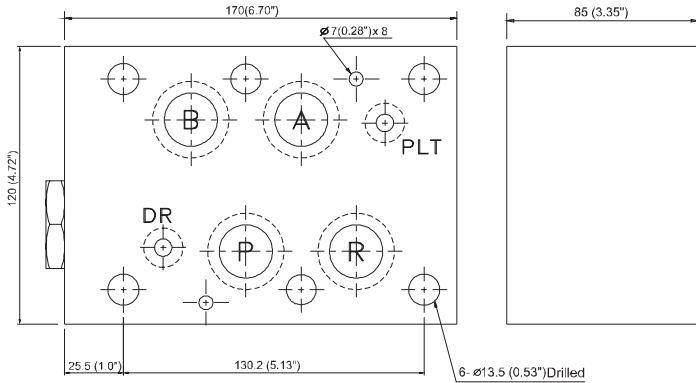


W=Relief A, B to T

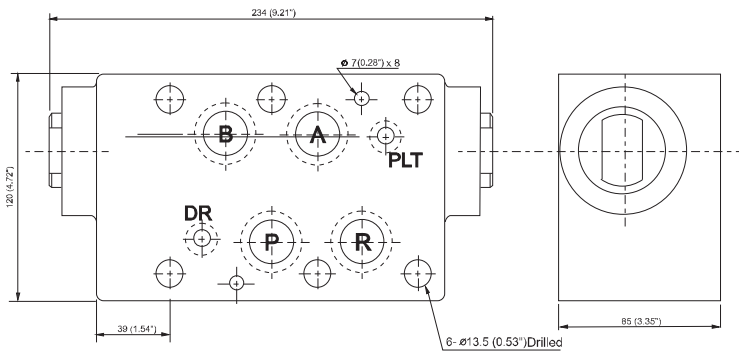


◆ DIMENSIONS 外型尺寸圖

MCV-06-P. T



MCV-06-W. A. B



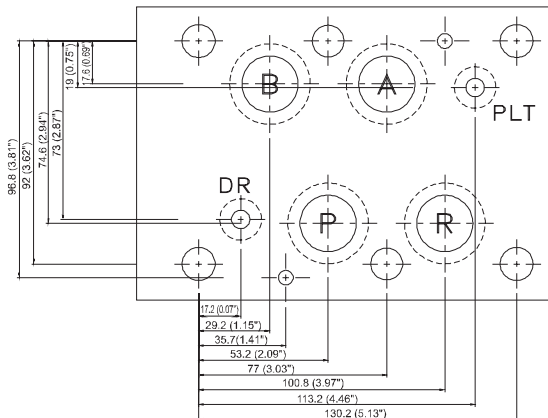
CHECK MODULAR VALVES

MCV SERIES

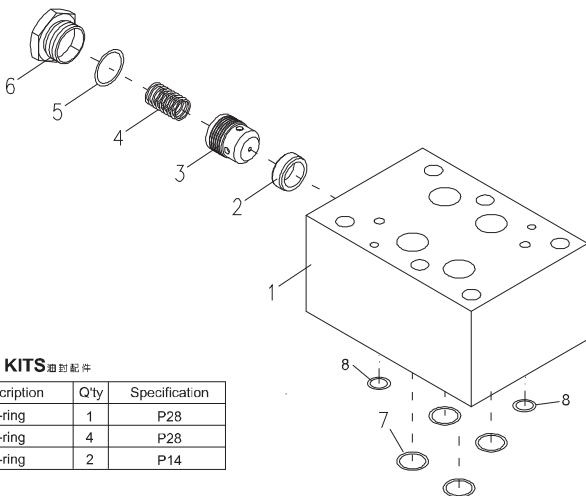
積層型止逆閥

◆ Mounting Interface 基準尺寸圖

ISO 4401-AE-08-4-A



◆ PARTS LIST OF MCV-06 SERIES 零件爆炸視圖



◆ SEAL KITS 密封配件

NO	Description	Q'ty	Specification
5	O-ring	1	P28
7	O-ring	4	P28
8	O-ring	2	P14

D
MCV