

# SOLENOID OPERATED CHECK MODULAR VALVES

## MLVS SERIES

積層型電磁止逆閥

### ◆ MODEL 型 式



### ◆ FEATURES

- Casting iron valve bodies are provide strength and durability for longer life.
- Internal hardened steel components also provide longer life.
- 特 點
- 閥本體鑄鐵強度夠且耐久性，壽命長。
- 內部硬鋼原件提高產品壽命。

### ◆ SPECIFICATIONS 規 格

Model Number 型式號碼	Maximum Pressure bar 最大壓力	Maximum Flow 最大流量 lpm	Weight 重 量 Kg
MLVS-02-A,B	210 (3000 psi)	35 (9.24 gpm)	1.8 (3.97 lbs)
MLVS-02-W			2.5 (5.5 lbs)
Fluid Type 流體型式		ISO VG 32 , 46 , 68	
Viscosity 黏性 cSt		10~400 (59~1854 SSU)	
Operating Temperature 操作溫度 °C		-15~70 (-5~158°F)	
Contamination Level 污染標準		ISO4406. 21/19/16 NAS1638,10	
Surface Treatment 表面處理		Zinc Phosphate Compound 鋅 磷酸鹽 化合物	

- All screws with metric measure , if require inch measure , please contact us.  
所附螺絲皆為公制標準規格品，若需英制螺絲請另外備註說明。

### ◆ HOW TO ORDER 編號說明

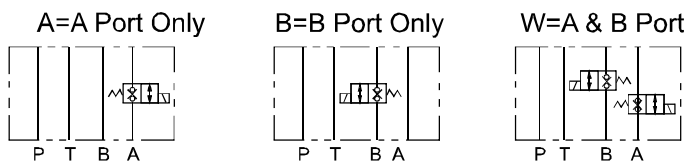
<b>1</b>	<b>2</b>	<b>3</b>	<b>4</b>	<b>5</b>
MLVS	— 02 —	W —	A2 —	20

**1 VALVE SERIES** 系列名稱  
MLVS=Solenoid Operated Check Modular Valves

**2 SUBPLATE MOUNTING SIZE:** 稱呼口徑

02 =1/4"(6mm)  
ISO CETOP3  
DIN NG 6  
NFPA D03

**3 CONTROL PORT(S)** 動作形式



**4 TYPE OF COIL** 電磁閥電磁線圈類型

A1: 115VAC      D1: 12 VDC  
A2: 230VAC      D2: 24 VDC

**5 DESIGN NO** 設計編號

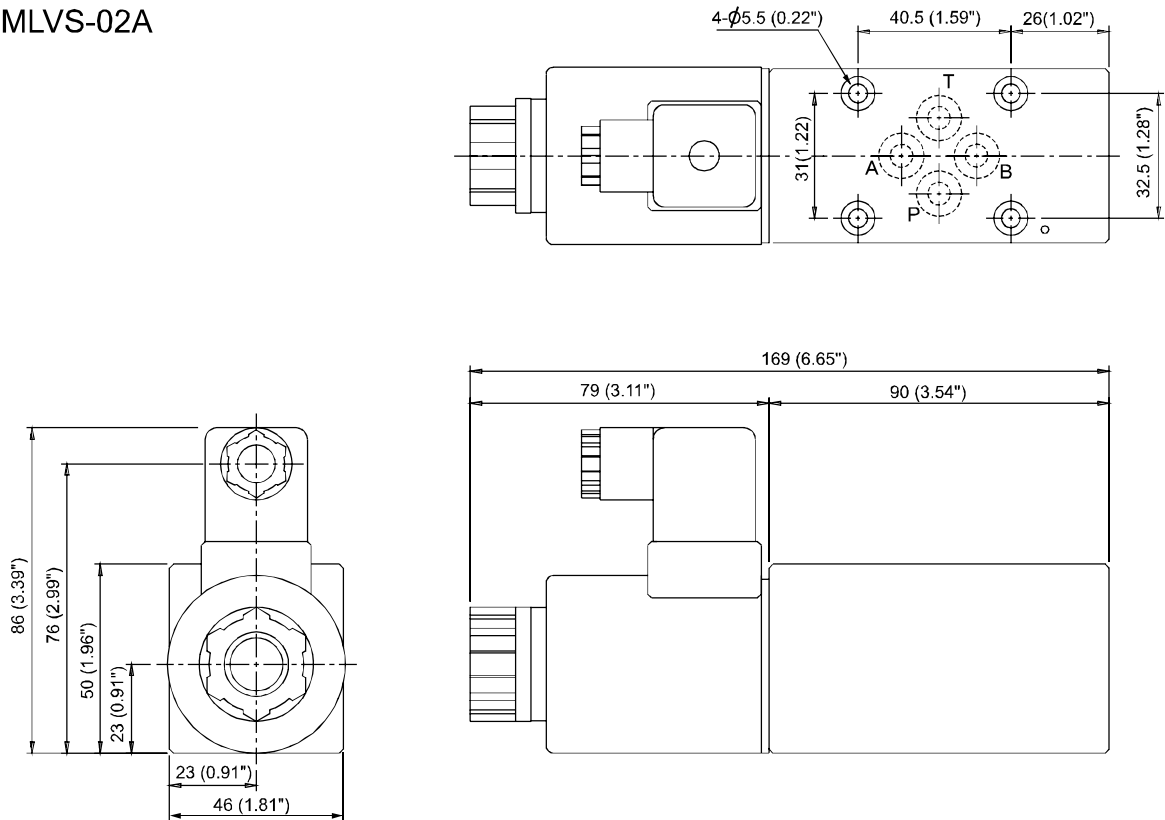
# SOLENOID OPERATED CHECK MODULAR VALVES

積層型電磁止逆閥

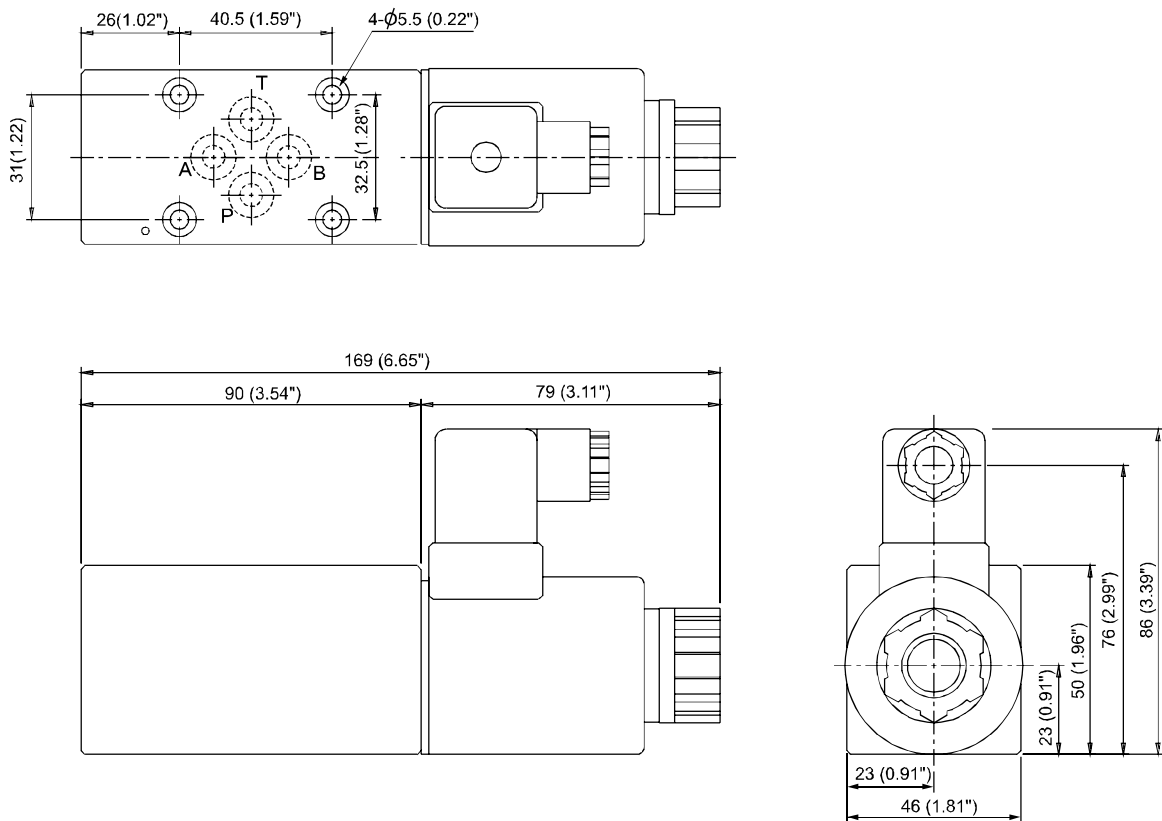
MLVS SERIES

## ◆ DIMENSIONS 外型尺寸圖

MLVS-02A



MLVS-02B



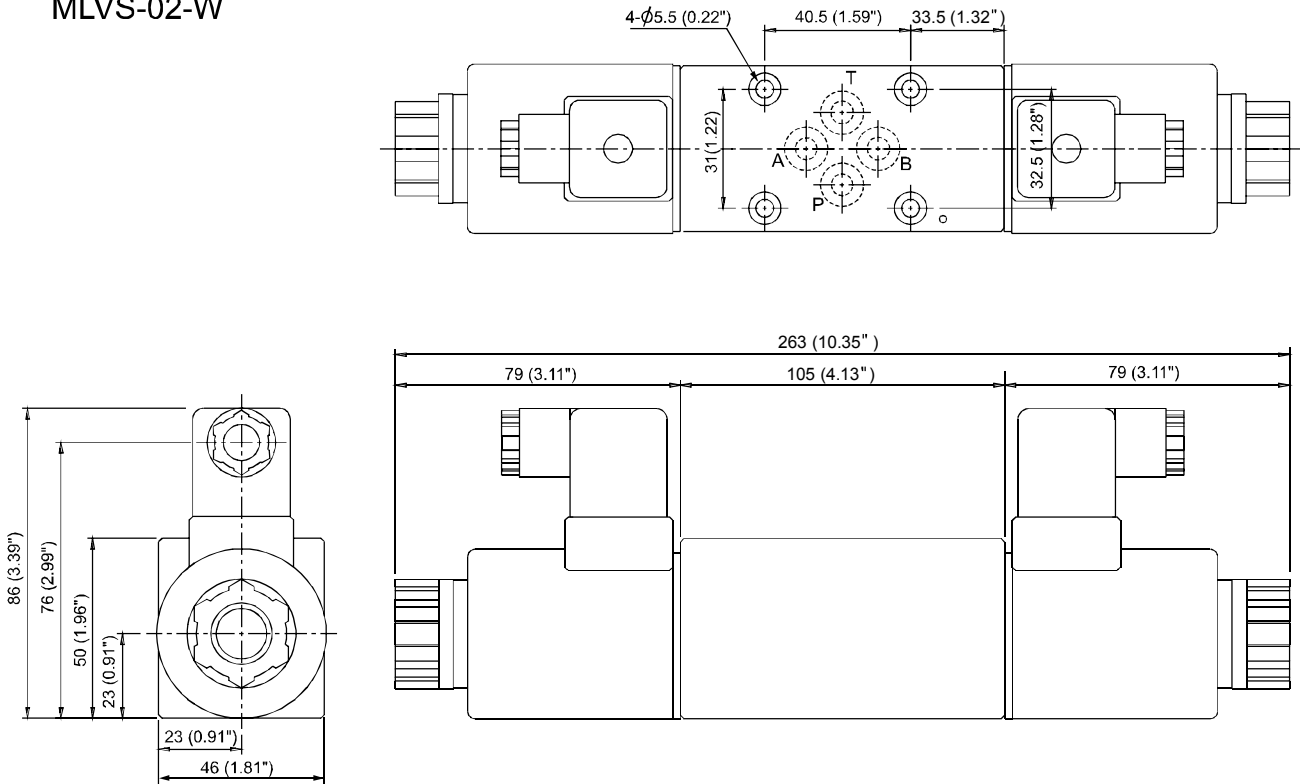
# SOLENOID OPERATED CHECK MODULAR VALVES

MLVS SERIES

積層型電磁止逆閥

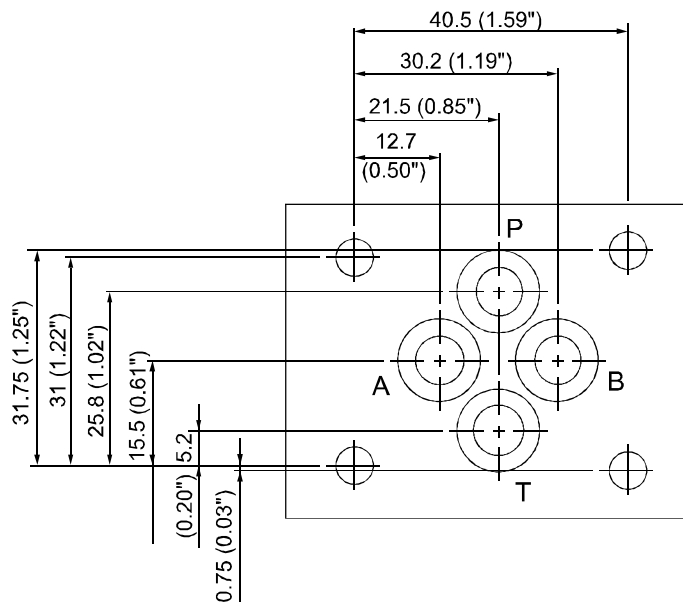
## ◆ DIMENSIONS 外型尺寸圖

MLVS-02-W



## ◆ Mounting Interface 基座尺寸圖

ISO 4401-AB-03-4-A



D  
MLVS