

PILOT OPERATED CHECK MODULAR VALVES

MPC SERIES

積層型引導止逆閥

◆ MODEL 型 式 MPC-03



MPC-03-D



◆ FEATURES

- MPC series modular pilot operated check valves can be used for the "A" port or the "B" port respectively, or the "A" port and the "B" port jointly.
- Casting iron valve bodies are provide strength and durability for longer life.
- Internal hardened steel components also provide longer life.

- 特 點
- MPC系列積層型引導止逆閥可隨時使用 A、B 孔和 A 孔與 B 孔同時使用。
- 鑄本體構造提供優良耐用性、高強度。
- 內部硬鋼零件提高產品壽命。

◆ SPECIFICATIONS 規 格

Model Number 型 式 號 碼	Maximum Pressure 最大壓力 bar	Connecting PT 適用管徑	Maximum Flow 最大流量 lpm	Weight 重 量 Kg
MPC-03-A, B	250 (3625 psi)	3/8"	80 (21.13 gpm)	2.6 (5.7 lbs)
MPC-03-W				2.8 (6.2 lbs)
MPC-03-AD, BD	315 (4500 psi)	3/8"	120 (31.70 gpm)	3.6 (7.9 lbs)
MPC-03-WD				
Fluid Type 液體型式			ISO VG 32, 46, 68	
Viscosity 黏性 cSt			10~400 (59~1854 SSU)	
Operating Temperature 操作溫度 °C			-15~70 (-5~158°F)	
Contamination Level 污染標準			ISO4406, 21/19/16 NAS1638,10	
Surface Treatment 表面處理			Zinc Phosphate Compound 磷 鎂鍍鹽 化合物	

● All screws with metric measure, if require inch measure, please contact us.

所附螺絲皆為公制標準規格品，若需英制螺絲請另外標註說明。

◆ HOW TO ORDER 編號說明

1	2	3	4	5
MPC	03	W	(D)	20

1 VALVE SERIES 系列名稱

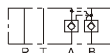
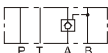
MPC=Pilot Operated Check Modular Valves

2 SUBPLATE MOUNTING SIZE: 編碼口徑

03 = 3/8"(9mm)
ISO CETOP5
DIN NG 10
NFPA D05

3 ACTION FORM 動作形式

A=A Port Only B=B Port Only W= A & ,B Port



4 MAJOR-MINOR TYPE 種類型

D = Pressure Relieving

D Type is optional type see page 168

D型為選訂型號◎者 (6頁)

5 DESIGN NO 設計編號

PILOT OPERATED CHECK MODULAR VALVES

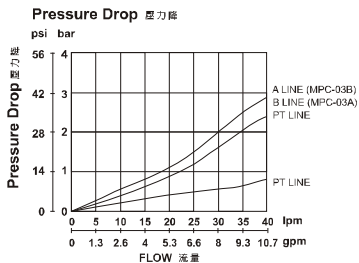
積層型引導止逆閥

MPC SERIES

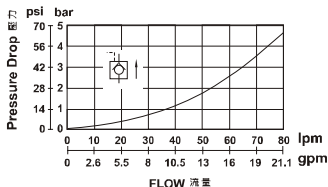
◆ PERFORMANCE 性能

Test Conditions 測試條件
 Oil Temperature 油溫度: 50°C(122°F)
 Viscosity 黏度: 35 cSt (163 SSU)

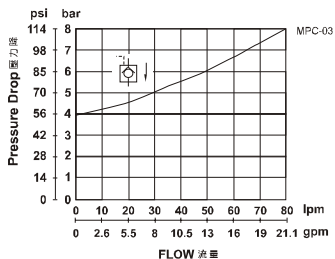
MPC-03



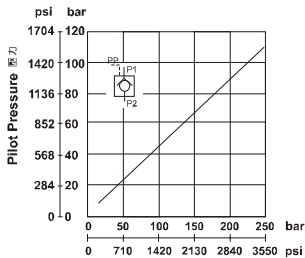
Pressure Drop (Reverse Controlled Flow)



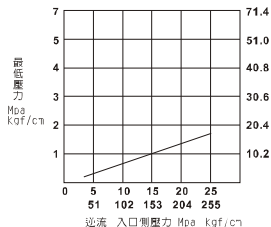
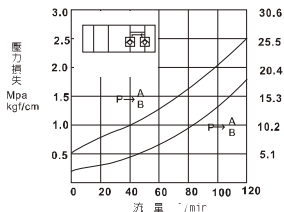
Pressure Drop (Free Flow) 壓力降(自由流量)



Minimum Pilot Pressure 最低引導壓力



MPC-03-※D



D
 MPC

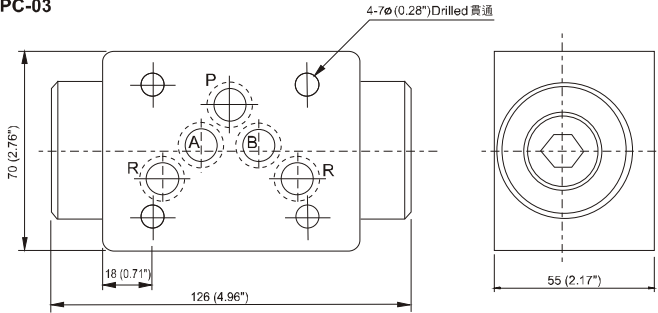
PILOT OPERATED CHECK MODULAR VALVES

MPC SERIES

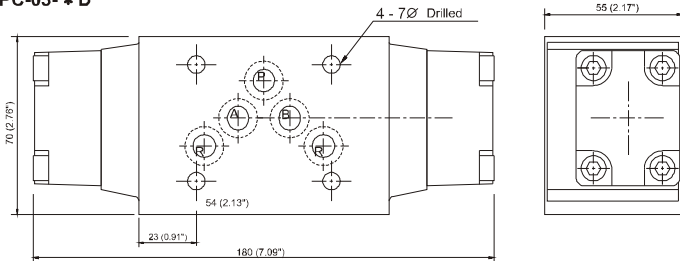
積層型引導止逆閥

◆ DIMENSIONS 外型尺寸圖

MPC-03



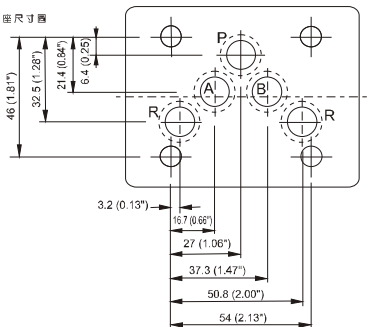
MPC-03- * D



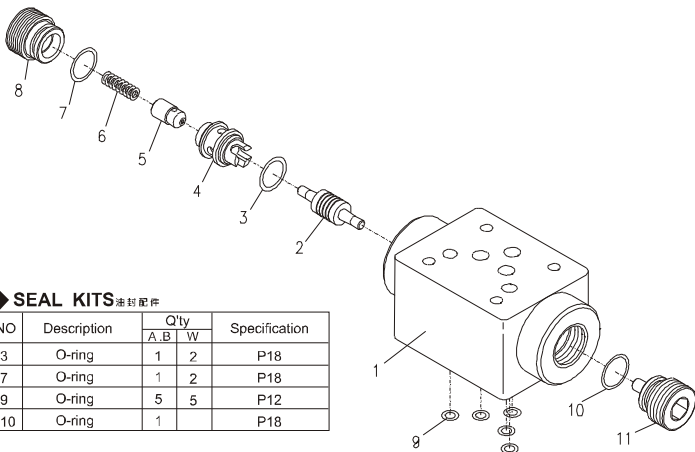
◆ Mounting Interface 基準尺寸圖

ISO 4401-AC-05-4-A

MPC-03



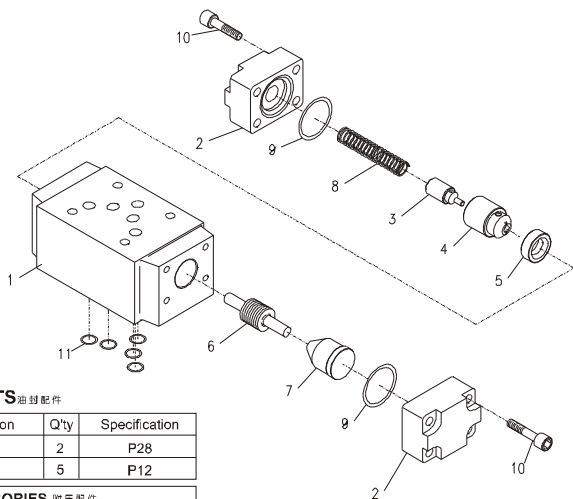
◆ PARTS LIST OF MPC-03 零件爆炸視圖



◆ SEAL KITS 油封配件

NO	Description	Q'ty		Specification
		A	B	
3	O-ring	1	2	P18
7	O-ring	1	2	P18
9	O-ring	5	5	P12
10	O-ring	1		P18

◆ PARTS LIST OF MPC-03-D 零件爆炸視圖



◆ SEAL KITS 油封配件

NO	Description	Q'ty	Specification
9	O-ring	2	P28
11	O-ring	5	P12

ACCESSORIES 附屬配件

10	HEX COUNTER-SINK SCREW	8	M6 x 1.0 x 30L
----	------------------------	---	----------------