

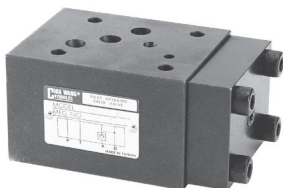
PILOT OPERATED CHECK MODULAR VALVES

MPCH SERIES

積層型引導止逆閥

◆ MODEL 型 式

MPCH-03A



◆ FEATURES

- MPCH series modular pilot operated check valves can be used for the "A" port.
- Casting iron valve bodies are provided strength and durability for longer life.
- Internal hardened steel components also provide durable life.
- MPCH series can be used to combine with MRB_03 series to ensure correctly safe positioning of the spindle head of working machine.
- 特 點
- MPCH 系列積層引導止逆閥均可使用 A 孔。
- 閥本體鑄鐵強度與壽命持久，壽命長。
- 內部硬質鋼零件提高產品壽命。
- MPCH 可與 MRB-03 配合，可使工作母機主軸獲得良好的安全定位。

◆ SPECIFICATIONS 規 格

Model Number 型式號碼	Maximum Pressure 最大壓力 bar	Connecting PT 通用管徑	Maximum Flow 最大流量 lpm	Weight 重量 Kg
MPCH-03A	250 (3625 psi)	3/8"	80 (21.1 gpm)	3.6 (7.9 lbs)
Fluid Type 液體型式			ISO VG 32 , 46 , 68	
Viscosity 黏性 cSt			10~400 (59~1854 SSU)	
Operating Temperature 運作溫度 °C			-15~70 (-5~158 °F)	
Contamination Level 污染標準			ISO4406. 21/19/16 NAS1638,10	
Surface Treatment 表面處理			Zinc Phosphate Compound 銹 磷鹽 化合物	

● All screws with metric measure , if require inch measure , please contact us.

所有螺絲皆為公制標準規格品，若需英制螺絲請另外備註說明。

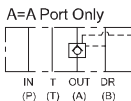
◆ HOW TO ORDER 編號說明

1	2	3	4
MPCH	03	A	20

1 VALVE SERIES 系列名稱
MPCH= Pilot Operated Check Modular Valves

2 SUBPLATE MOUNTING SIZE: 編時口徑
03 = 3/8"(9mm)
ISO CETOP5
DIN NG 10
NFPAD05

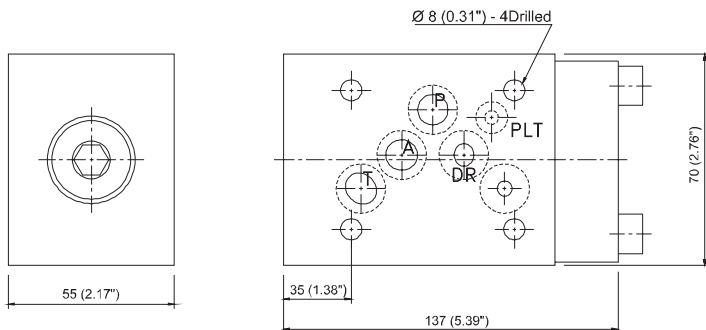
3 CONTROL PORT(S) 動作形式



4 DESIGN NO 設計編號

◆ DIMENSIONS 外型尺寸圖

MPCH-03-A



◆ Mounting Interface 基座尺寸圖

ISO 4401-AC-05-4-A

