

SOLENOID OPERATED CHECK MODULAR VALVES

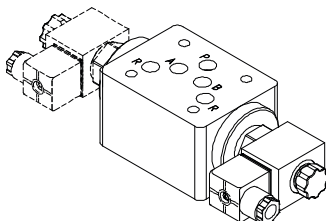
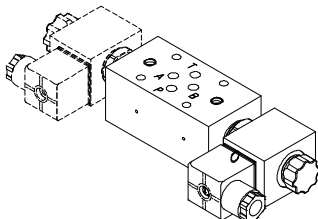
積層型電磁止逆閥

MSC SERIES

MODEL 型式

MSC-02-W

MSC-03-W



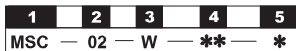
SPECIFICATIONS 規格

Model Number 型式號碼	Maximum Pressure 最大壓力 bar	Connecting PT 適用管徑	Maximum Flow 流量 lpm	Weight 重量 Kg
MSC-02-A,B	350 (5075 psi)	1/4"	40 (10.57 gpm)	1.6 (3.53 lbs)
MSC-02-W				2 (4.41 lbs)
MSC-03-A,B		3/8"	75 (19.82 gpm)	2.8 (6.17 lbs)
MSC-03-W	3.3 (7.26 lbs)			
Fluid Type 液體型式			ISO VG 32,46,68	
Viscosity 黏性 cSt			10-400 (59-1854SSU)	
Operating Temperature 操作溫度 °C			-15~70 (-5~158°F)	
Contamination Level 污染標準			ISO4406, 21/19/16 NAS1638,10	
Surface Treatment 表面處理			Zinc Phosphate Compound 磷酸鹽化合物	

● All screws with metric measure, if require inch measure, please contact us.

所有螺絲皆為公制標準規格，若有英寸螺絲請另外備註說明。

HOW TO ORDER 編號說明



4 TYPE OF COIL 電磁閥電磁線圈類型

A1: 110 V RAC D1: 12 VDC
A2: 220 V RAC D2: 24 VDC

5 CONTROL WAY 控制方式

Please consider another control methods of Chia Wang's cartridge valves and spool.
<http://www.chia-wang.com>(VSV SERIES)
 其它控制方式請參考住王插式閥軸心資料。
<http://www.chia-wang.com>(VSV 系列)

1 VALVE SERIES 系列名稱

MSC= Solenoid Operated Check Modular Valves
積層型電磁止逆閥

2 SUBPLATE MOUNTING SIZE 副板口徑

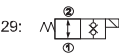
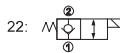
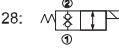
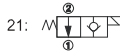
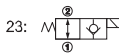
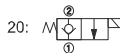
02=1/4"(6mm) 03=3/8"(9mm)
 ISO CETOP3 ISO CETOP5
 DIN NG 6 DIN NG 10
 NFPA D03 NFPA D05

3 CONTROL PORT(S) 動作形式

A=A Port Only

B=B Port Only

W=A & B Port



D
MSC

SOLENOID OPERATED CHECK MODULAR VALVES

MSC SERIES

積層型電磁止逆閥

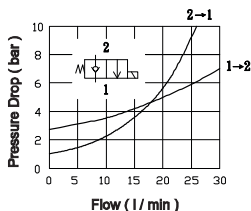
◆ PERFORMANCE 性能

Test Conditions 測試條件

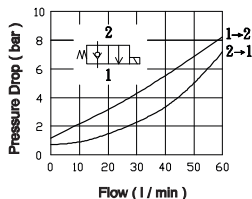
Oil Temperature 油溫度: 50°C (122°F)

Viscosity 黏度: 35 cSt (163 SSU)

MSC-02-W

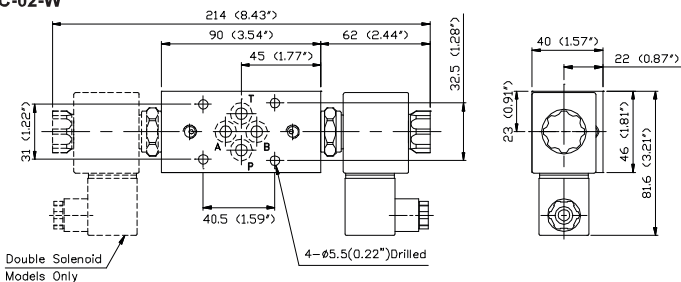


MSC-03-W



◆ DIMENSIONS 外型尺寸

MSC-02-W



Double Solenoid Models Only

◆ Mounting Interface 基座尺寸

ISO 4401-AB-03-4-A

