

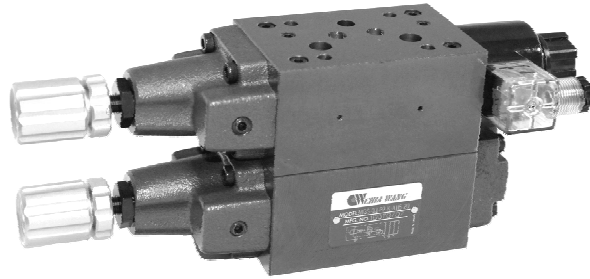
TWO-PRESSURE REDUCING MODULAR VALVES

MGS SERIES

積層型二段式減壓閥

◆ MODEL 型 式

MGS-03-P



◆ FEATURES

- MGS series modular two section reducing valves can be used to reduce pressure on the "P" port .
- Casting iron valve bodies are provided strength and durability for longer life.
- Internal hardened steel components also provide durable life.
- Standard two pressure setting options are available.
- Two flow adjustment options are: hex. screw or knob.
- It has the function of changeover between high and low pressure within the same circuit.

- 特 點
- MGS 系列積層型二段式減壓閥可使用 P孔 減少壓力。
- 閥本體鑄鐵強度夠且耐用性，壽命長。
- 內部硬鋼原件提高產品壽命。
- 二種標準壓力設定選擇。
- 六角螺絲或把手兩種壓力調整選擇。
- 在同一迴路裏可變換高、低壓力的兩種功能。

◆ SPECIFICATIONS 規 格

Model Number 型式號碼	Maximum Pressure 最大壓力 bar	Connecting PT 適用管徑	Maximum Flow 最大流量 lpm	Weight 重量 Kg
MGS-03-P	250 (3625 psi)	3/8"	80 (21.13 gpm)	8.2 (18.1 lbs)
Fluid Type 流體型式		ISO VG 32 , 46 , 68		
Viscosity 黏性 cSt		10~400 (59~1854 SSU)		
Operating Temperature 操作溫度 °C		-30~100 (-22~212°F)		
Contamination Level 污染標準		ISO4406. 21/19/16 NAS1638,10		
Surface Treatment 表面處理		Zinc Phosphate Compound 鋅 磷酸鹽 化合物		

- All screws with metric measure , if require inch measure , please contact us.
所附螺絲皆為公制標準規格品，若需英制螺絲請另外備註說明。

◆ HOW TO ORDER 編號說明

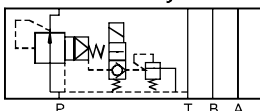
1	2	3	4	5	6	7
MGS	— 03 —	P	*	— ** —	K	— 20

1 VALVE SERIES 系列名稱
MGS= Two-pressure Reducing Modular Valves

2 SUBPLATE MOUNTING SIZE: 稱呼口徑
03 = 3/8"(9mm)
ISO CETOP5
DIN NG 10
NFPA D05

3 CONTROL PORT(S) 動作形式

P=P Port Only



4 ADJUSTMENT PRESSURE 壓力調整範圍
1. 2~70 (bar)
2. 8~140 (bar)

5 TYPE OF COIL 電磁線圈類型
A1:AC110 D1:DC12
A2:AC220 D2:DC24

6 SHAPE 調整部形狀
NONE:TOOL ADJUST 無：工具調整式
K:HAND-BAR ADJUST K：手把調整式

7 DESIGN NO 設計編號

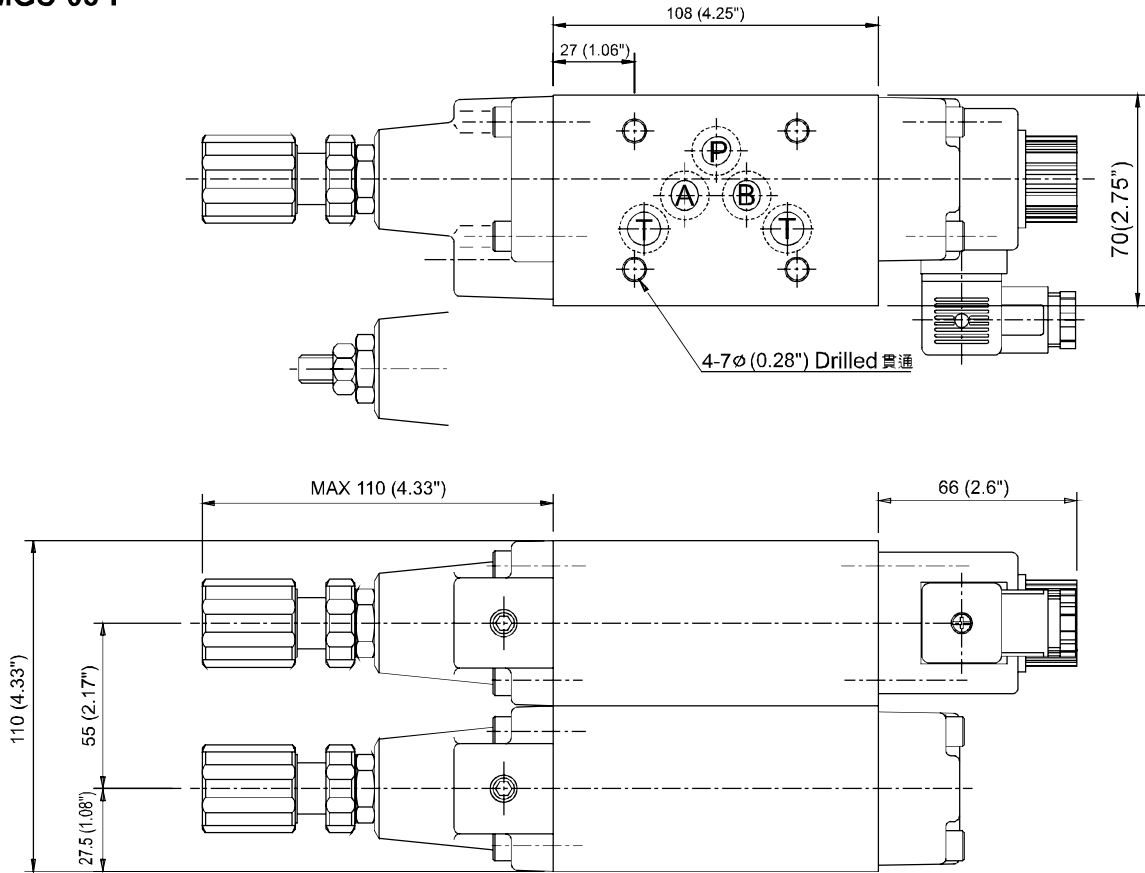
TWO-PRESSURE REDUCING MODULAR VALVES

積層型二段式減壓閥

MGS SERIES

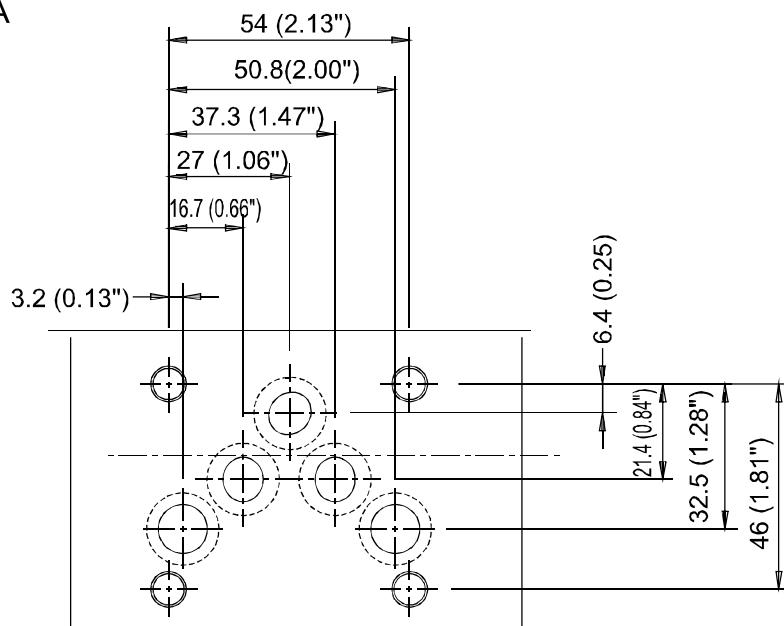
◆ DIMENSIONS 外型尺寸圖

MGS-03-P



◆ Mounting Interface 基座尺寸圖

ISO 4401-AC-05-4-A



E
MGS