

COMPOUND MODULAR VALVES

MSK SERIES

積層型複合閥

◆ MODEL 型 式 MSK-02-B



◆ FEATURES

- MSK series modular compound valves can be used for the "A" port or "B" port.
 - Castling iron valve bodies are provided strength and durability for longer life.
 - Internal hardened steel components also provide durable life.
 - Two flow adjustment options are: hex. screw or knob.
- 特 點
 - MSK 系列積層型複合閥均可使用 A孔、B孔。
 - 鐵本體經處理加強耐用持久性，壽命長。
 - 內部硬鋼零件提高產品壽命。
 - 六角螺絲或把手兩種流量調整選擇。

◆ SPECIFICATIONS 規 格

Model Number 型式號碼	Maximum Pressure 最大壓力 bar	Connecting PT 適用管徑	Maximum Flow 最大流量 lpm	Weight 重量 Kg
MSK-02-A, B	250 (3625 psi)	1/4"	40 (10.56 gpm)	1.2 (2.7 lbs)
Fluid Type 液體型式			ISO VG 32, 46, 68	
Viscosity 黏性 cSt			10~400 (59~1854 SSU)	
Operating Temperature 操作溫度 °C			-15~70 (-5~158 °F)	
Contamination Level 污染標準			ISO4406. 21/19/16 NAS1638.10	
Surface Treatment 表面處理			Zinc Phosphate Compound 銻 磷酸鹽 化合物	

● All screws with metric measure, if require inch measure, please contact us.

所有螺絲皆為公制標準規格品，若需英制螺絲請另外備註說明。

◆ HOW TO ORDER 編號說明

1	2	3	4
MSK	02	B	20

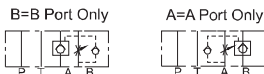
1 VALVE SERIES 系列名稱

MSK=Modular Compound Valves

2 SUBPLATE MOUNTING SIZE: 前埠口徑

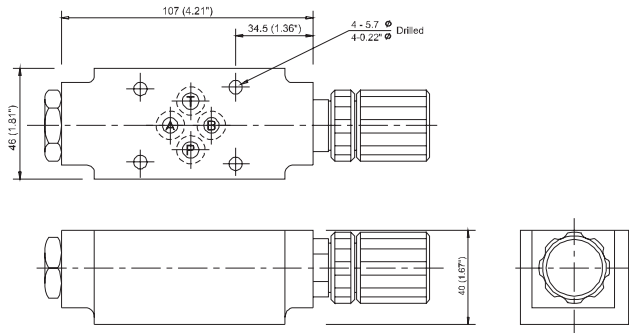
02 = 1/4" (6mm)
ISO CETOP3
DIN NG 6
NFPA D03

3 CONTROL PORT(S) 動作形式

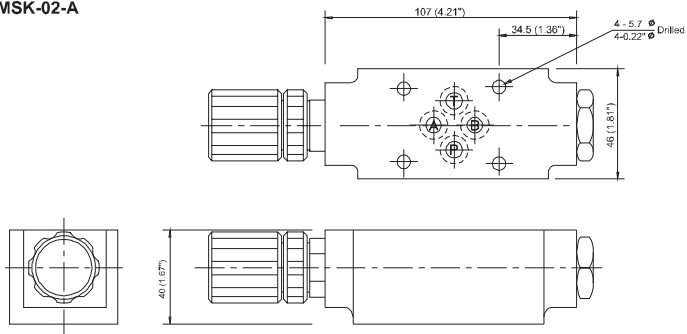


4 DESIGN NO 設計編號

◆ DIMENSIONS 外型尺寸圖
MSK-02-B



MSK-02-A



◆ Mounting Interface 基座尺寸圖
ISO 4401-AB-03-4-A

