

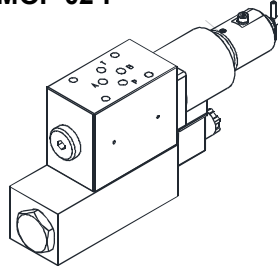
MODULAR TYPE ELECTRO-HYDRAULIC PROPORTIONAL FLOW CONTROL VALVES

基層型電磁比例流量閥

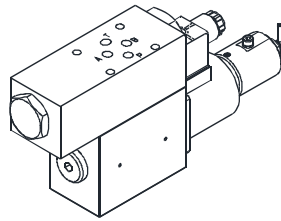
EMOF SERIES

◆ MODEL 型式

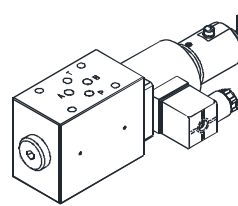
EMOF-02-P



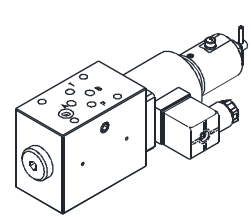
EMOF-02-T



EMF-02-P



EMF-02-T



◆ HANDING DESCRIPTION 使用說明

1. Air Bleeding 排出空氣

To enable proper pressure control, loosen the air vent starting up the pump in order to bleed any air from the pump, and fill the inside of the solenoid with hydraulic operating fluid. 要進行良好的壓力控制, 初次使用時, 轉排氣孔充分排出空氣, 並使電磁閥內充滿液壓油。

2. Manual Pressure Adjusting Screw 手動壓力調整螺栓

For the initial adjustment or when there is no input current to the valve due to an electrical problem or some other reason, valve pressure can be increased by rotating the manual adjustment screw clockwise (rightward). Normally, the manual adjusting screw should be rotated back fully to the left (counterclockwise) and secured with the lock nut.

初期調整或因電器故障等原因閥中無輸入電流時, 通過手動調整螺栓向右轉動可以使壓力上升。平時必須把手動調整螺栓全部轉回原位置, 並鎖緊螺母。

3. T Port Back Pressure T口背壓

Since this valve has an internal drain system, make sure that valve T port back pressure is no greater than 25.5 bar.

由於是內部洩油方式, 閥T口背壓請設為25.5 bar以下。

◆ SPECIFICATIONS 規格

Model Number 型式號碼	Maximum Pressure 最大壓力 bar	T Part Allowable back Pressure T口容許背壓 bar	Flow Rate Control Range 流量控制範圍 lpm	Rated Current 額定電流 mA	Coil Resistance 線圈阻抗 Ω	Hysteresis 磁滯性 %	Voltage 電壓 VDC
EMOF-02	210(3046 psi)	25(362 psi) max. 以下	0.3~25 (0.08~6.60 gpm)	850±10%	20 (20°C)	3 max. 以下	24
EMF-02							
Fluid Type 流體型式				ISO VG 32, 46, 68			
Viscosity 黏性 cSt				10~400 (59~1854 SSU)			
Operating Temperature 操作溫度 °C				-15~70 (-5~158 °F)			
Contamination Level 污染標準				ISO4406. 21/19/16 NAS1638,10			

● All screws with metric measure, if require inch measure, please contact us.

所附螺絲皆為公制標準規格品, 若需英制螺絲請另外備註說明。

◆ WEIGHT 重量

EMOF-02 : 3.8 Kg (8.4 lbs)

EMF-02 : 2.5 Kg (5.5 lbs)

◆ HOW TO ORDER 編號說明

1	2	3	4
EMOF	02	T	NC

4 CONTROL PORT(S) 動作形式

1 VALVE SERIES 系列名稱

EMOF = Modular Type Electro-hydraulic Proportional Flow Control Valves

(Pressure Compensated Included)

基層型電磁比例流量閥(附壓力補償)

EMF = Modular Type Electro-hydraulic Proportional Flow Control Valves

基層型電磁比例流量閥

2 SUBPLATE MOUNTING SIZE: 稱呼口徑

02 = 1/4"(6mm)

ISO CETOP3

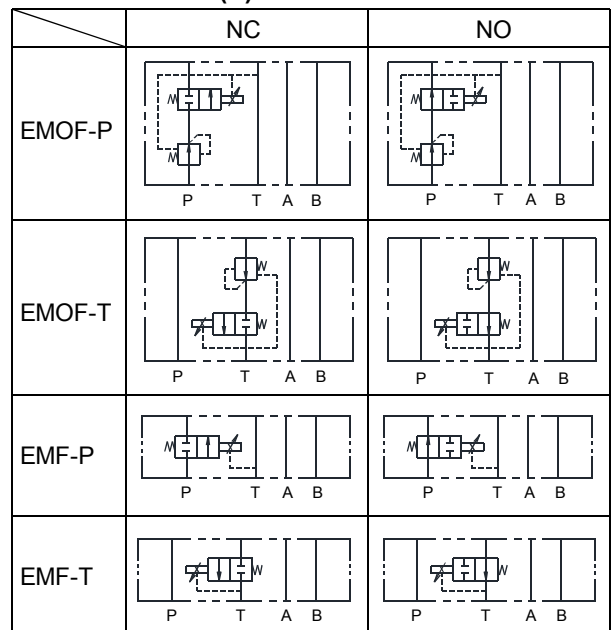
DIN NG 6

NFPA D03

3 FLOW RATE CONTROL PORT 流量控制口

P : P port (Meter in control) P口(入口節流控制)

T : T port (Meter out control) T口(出口節流控制)



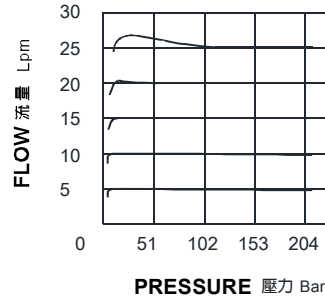
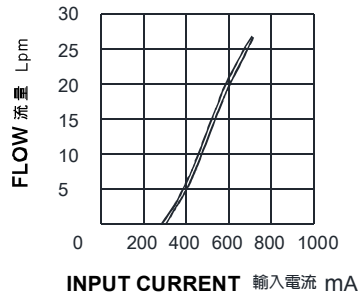
MODULAR TYPE ELECTRO-HYDRAULIC PROPORTIONAL FLOW CONTROL VALVES

EMOF SERIES

基層型電磁比例流量閥

◆ PERFORMANCE 特性曲線

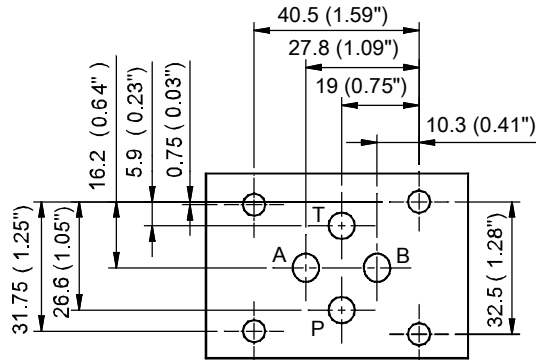
EMOF



◆ Mounting Interface

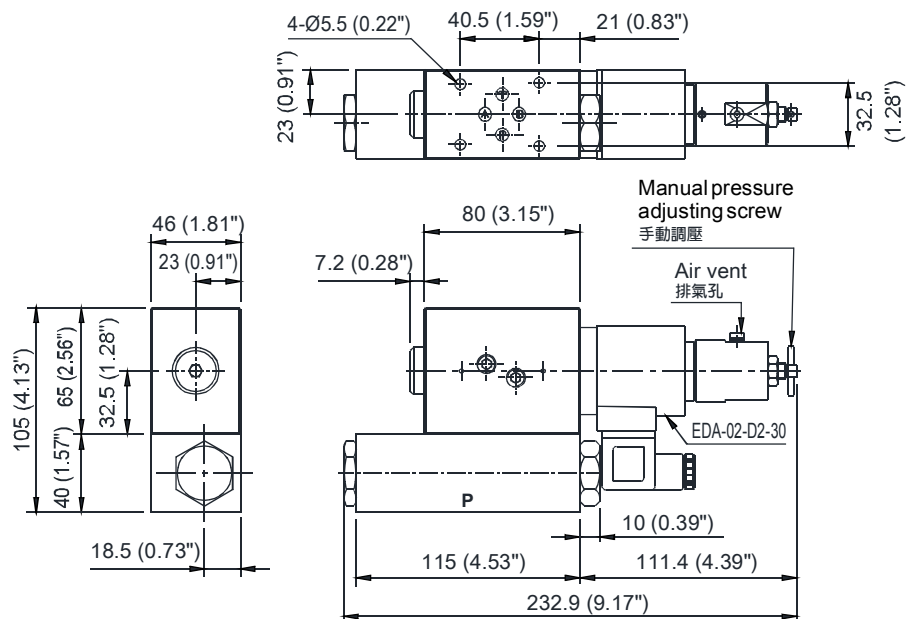
基座尺寸圖

ISO 4401-AB-03-4-A



◆ DIMENSIONS 外型尺寸圖

EMOF-02-P



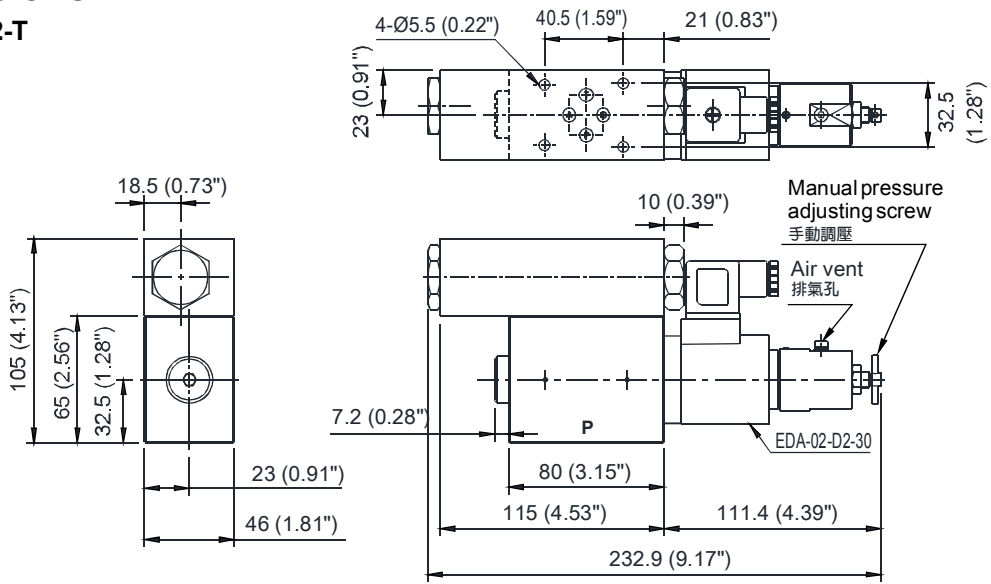
MODULAR TYPE ELECTRO-HYDRAULIC PROPORTIONAL FLOW CONTROL VALVES

基層型電磁比例流量閥

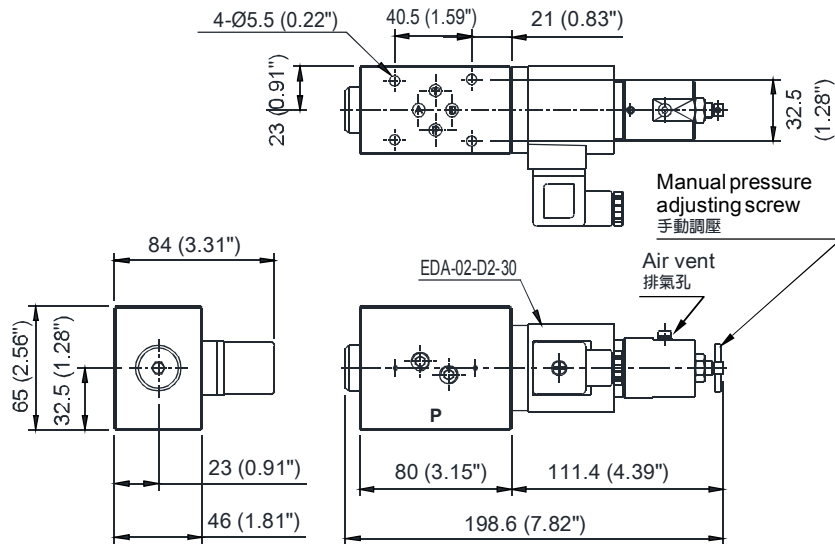
EMOF SERIES

◆ DIMENSIONS 外型尺寸圖

EMOF-02-T



EMF-02-P



EMF-02-T

