

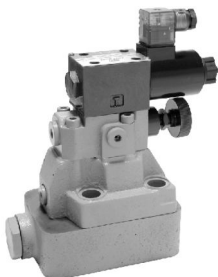
# SOLENOID OPERATED UNLOADING RELIEF VALVES

電磁式卸載溢流閥

DAW SERIES

## ◆ MODEL 型 式

DAW-06G



## ◆ SPECIFICATIONS 規 格

Model Number 型式號碼	Maximum Pressure 最大壓力 bar	Connecting PT 通用管徑	Maximum Flow 最大流量 lpm	Weight 重量 Kg
DAW-03G	315 (4500 psi)	3/8"	60 (15.85 gpm)	8.5 (18.7 lbs)
DAW-06G		3/4"	120 (31.70 gpm)	14 (30.9 lbs)
DAW-10G		1-1/4"	240 (63.40 gpm)	14 (30.9 lbs)
Fluid Type 液體型式			ISO VG 32, 46, 68	
Viscosity 黏性 cSt			10~400 (59~1854 SSU)	
Operating Temperature 操作溫度 °C			-15~70 (-5~158 °F)	
Contamination Level 污染標準			ISO4406, 21/19/16 NAS1638, 10	

● All screws with metric measure, if require inch measure, please contact us.

所有螺絲皆為公制標準規格，若需英制螺絲請另洽工程師。

## ◆ HOW TO ORDER 編號說明

1	2	3	4	5	6	7
DA	W	03	G	*	**	30

### 1 VALVE SERIES 系列名稱

DAW=Solenoid Operated Unloading Relief Valves

### 2 SOLENOID TYPE 電磁式

### 3 SUBPLATE MOUNTING SIZE: 稱呼口徑

03 = 3/8"(9mm)    06 = 3/4"(19mm)    10 = 1 1/4"(31.8mm)  
 ISO CETOP5    ISO CETOP8    ISO CETOP10  
 DIN NG 10    DIN NG 25    DIN NG 32  
 NFPA D05    NFPA D08    NFPA D10

### 4 CONNECTING TYPE 連接型式

G:TYPE:BASEPLATE MOUNTING TYPE (板式連接)

### 5 PRESSURE ADJUSTMENT 壓力調整範圍

1. \*~100 bar    3. 12 ~ 315 bar

### 6 COIL TYPES OF SOLENOID VALVE

電磁閥電磁鐵類型

A1: AC110 A2: AC220  
 D1: DC12 D2: DC24  
 R1: AC110 R2: AC220

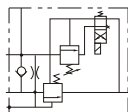
### 7 WIRING TYPE 接線型式

20: WIRING BOX TYPE 接線盒式  
 30: DIN TYPE DT型

## ◆ ACCESSORIES 附屬配件

MODEL 型 式	SOCHOL CAP SCREW 安裝螺絲 (HEX COUNTER-SINK SCREW) 圓頭內六角螺絲	
DAW-03G	M12 x80L	4
	M16 x95L	4
DAW-06G	M16 x55L	2
	M18 x55L	2
DAW-10G	M18 x110L	4

## ◆ CONTROL PORT(S) 動作形式



**F**  
DAW

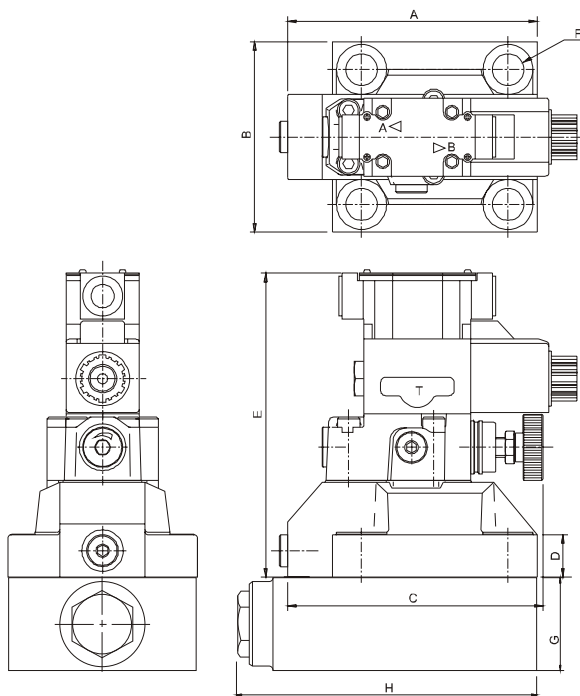
# SOLENOID OPERATED UNLOADING RELIEF VALVES

DAW SERIES

電磁式卸載溢流閥

## ◆ DIMENSIONS 外型尺寸圖

DAW - 03. 06. 10G



MODEL	A	B	C	D	E	F	G	H
DAW-03	91 (3.58")	78 (3.07")	135 (5.31")	26 (1.02")	183 (7.20")	14(0.55")	40(1.57")	132(5.20")
DAW-06	116 (4.57")	100 (3.94")	144 (5.67")	26 (1.02")	183 (7.20")	18(0.71")	52(2.05")	167(6.57")
DAW-10	148 (5.83")	115 (4.53")	154 (6.06")	26 (1.02")	183 (7.20")	20(0.79")	67(2.64")	198(7.80")