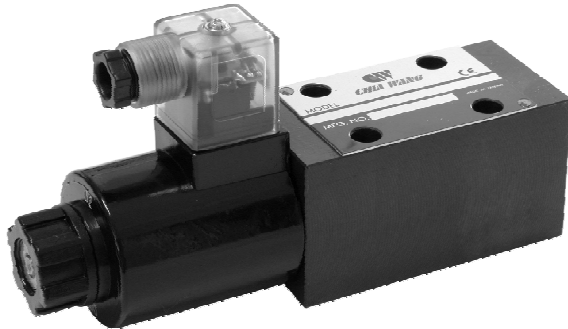


◆ MODEL 型 式

LVS-02G



◆ FEATURES

- Casting iron valve bodies are provide strength and durability for longer life.
- Internal hardened steel components also provide longer life.
- 特 點
- 閥本體鑄鐵強度夠且耐久性，壽命長。
- 內部硬鋼原件提高產品壽命。
- 本設計為雙止逆方式可得非常良好的止逆功能。

◆ SPECIFICATIONS 規 格

Model Number 型式號碼	Maximum Pressure bar 最大壓力	Maximum Flow 最大流量 lpm	Weight 重量 Kg
LVS-02G	250 (3625 psi)	35 (9.24 gpm)	
LVS-03G		50 (13.2 gpm)	
Fluid Type 流體型式		ISO VG 32 , 46 , 68	
Viscosity 黏性 cSt		10~400 (59~1854 SSU)	
Operating Temperature 操作溫度 °C		-15~70 (-5~158 °F)	
Contamination Level 污染標準		ISO4406. 21/19/16 NAS1638,10	
Surface Treatment 表面處理		Zinc Phosphate Compound 鋅 磷酸鹽 化合物	

- All screws with metric measure , if require inch measure , please contact us.
所附螺絲皆為公制標準規格品，若需英制螺絲請另外備註說明。

◆ HOW TO ORDER 編號說明

1	2	3	4	5
LVS	— 02	G	— A2	— 20

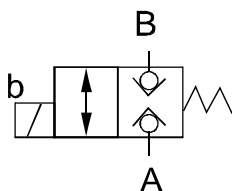
- 1 VALVE SERIES** 系列名稱
LVS=Solenoid Check Valves

- 4 TYPE OF COIL** 電磁閥電磁線圈類型
A1 : 115VAC D1 : 12 VDC
A2 : 230VAC D2 : 24 VDC

- 2 SUBPLATE MOUNTING SIZE:** 稱呼口徑
02 = 1/4"(6mm) 03 = 3/8"(9mm)
ISO CETOP3 ISO CETOP5
DIN NG 6 DIN NG 10
NFFPA D03 NFFPA D05

- 5 DESIGN NO** 設計編號

- 3 CONTROL PORT(S)** 動作形式



SOLENOID CHECK VALVES

LVS SERIES

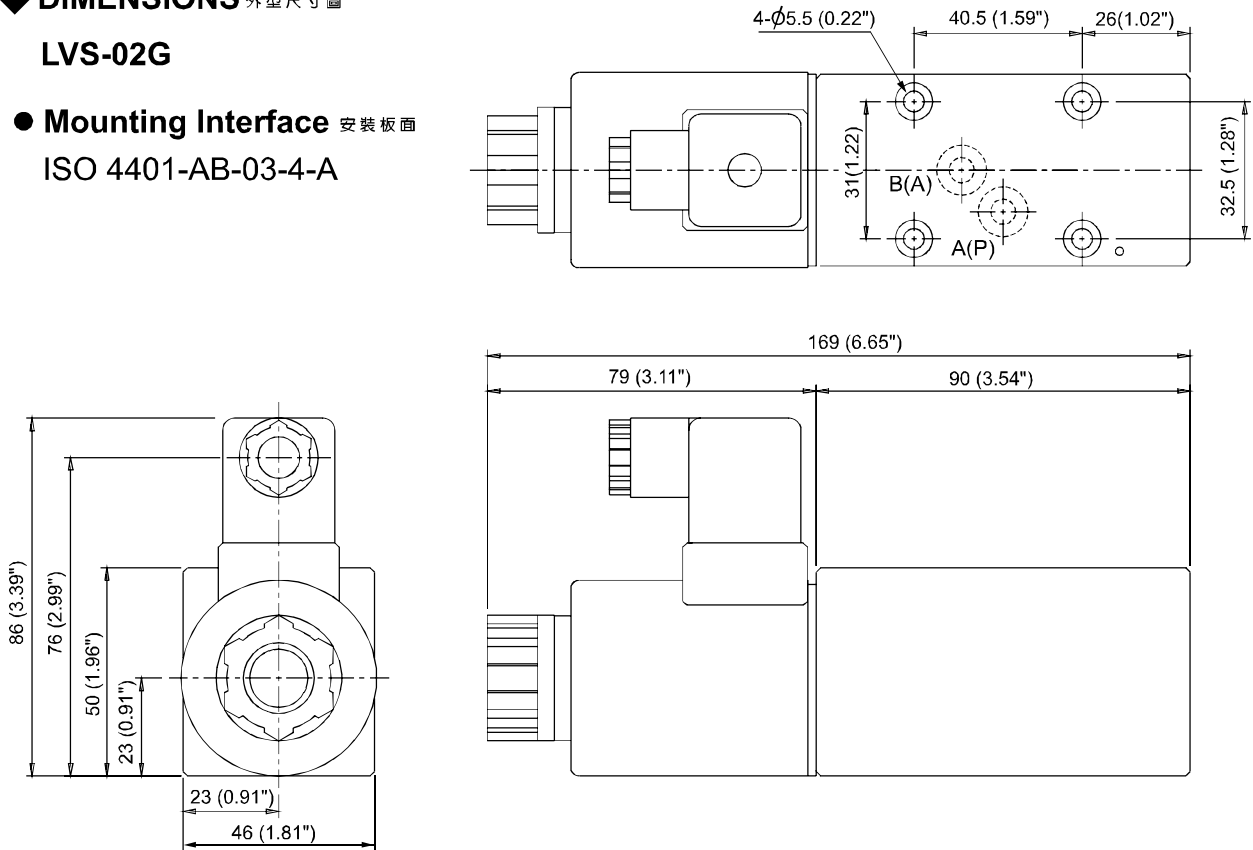
電磁止逆閥

◆ DIMENSIONS 外型尺寸圖

LVS-02G

● Mounting Interface 安裝板面

ISO 4401-AB-03-4-A



LVS-03G

● Mounting Interface 安裝板面

ISO 4401-AC-05-4-A

