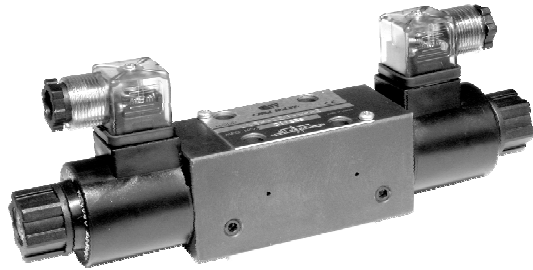
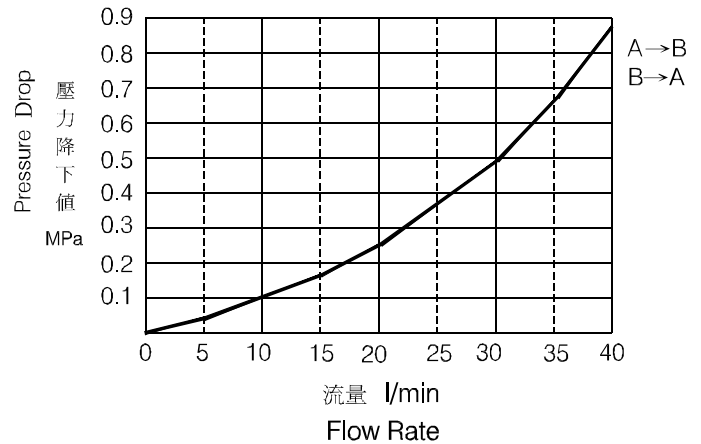


◆ **MODEL 型 式**  
**LVSH-02G**



◆ **PERFORMANCE(Cartridge Only)**  
特性曲線



◆ **SPECIFICATIONS 規 格**

Model Number 型式號碼	Maximum Pressure 最大壓力 bar	Maximum Flow 最大流量 lpm	Weight 重量 Kg
LVSH-02G	315 (4500 psi)	35 (9.25 gpm)	2.4 (5.3 lbs)
<b>Fluid Type 流體型式</b>		ISO VG 32 , 46 , 68	
<b>Viscosity 黏性 cSt</b>		10~400 (59~1854 SSU)	
<b>Operating Temperature 操作溫度 °C</b>		-30~100 (-22~212°F)	
<b>Contamination Level 污染標準</b>		ISO4406. 21/19/16 NAS1638,10	
<b>Surface Treatment 表面處理</b>		Zinc Phosphate Compound 鋅 磷酸鹽 化合物	

- All screws with metric measure , if require inch measure , please contact us.  
所附螺絲皆為公制標準規格品，若需英制螺絲請另外備註說明。

◆ **HOW TO ORDER 編號說明**

<b>1</b>	<b>2</b>	<b>3</b>	<b>4</b>	<b>5</b>
LVSH	— 02	G	— **	— 20

**1 VALVE SERIES 系列名稱**  
LVSH= Solenoid Check Valves

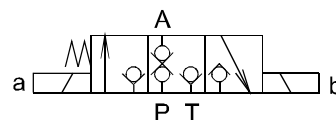
**2 SUBPLATE MOUNTING SIZE: 稱呼口徑**  
02=1/4"(6mm)  
ISO CETOP3  
DIN NG 6  
NFPA D03

**3 CONNECTING TYPE 連接型式**  
G:TYPE:BASEPLATE MOUNTING TYPE  
G : (板式連接)

**4 TYPE OF COIL 電磁閥電磁線圈類型**  
A1 : AC110 60HZ D1 : DC12  
A115 : AC115 50HZ D2 : DC24  
A230 : AC230 50HZ R1 : RF110 60HZ/50HZ  
A2 : AC220 60HZ R2 : RF220 60HZ/50HZ

**5 DESIGN NO 設計編號**

◆ **CONTROL PORT(S) 動作形式**



# SOLENOID CHECK VALVES

LVSH-02G

電磁止逆閥

## ◆ DIMENSIONS 外型尺寸圖

LVSH-02G

## ● Mounting Interface 安裝板面

ISO 4401-AB-03-4-A

**A**  
LVSH

