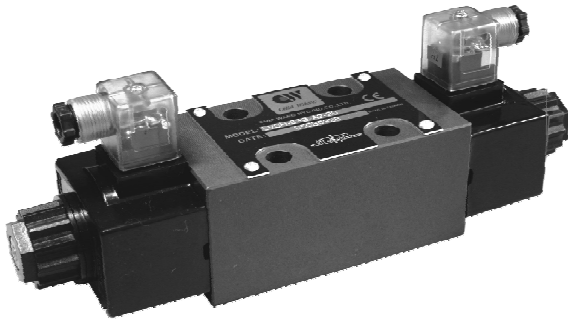
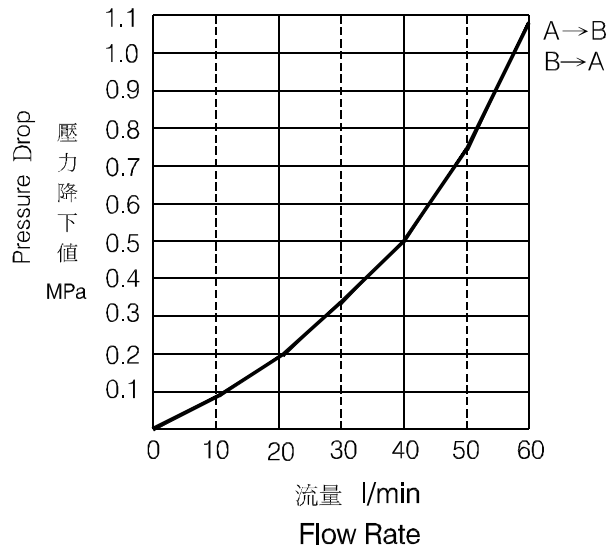


◆ MODEL 型 式

LVSH-03G



◆ PERFORMANCE (Cartridge Only) 特性曲線



◆ SPECIFICATIONS 規 格

Model Number 型式號碼	Maximum Pressure 最大壓力 bar	Maximum Flow 最大流量 lpm	Weight 重量 Kg
LVSH-03G	315 (4500 psi)	50 (13.21 gpm)	6.9 (15.2 lbs)
Fluid Type 流體型式		ISO VG 32, 46, 68	
Viscosity 黏性 cSt		10~400 (59~1854 SSU)	
Operating Temperature 操作溫度 °C		-30~100 (-22~212°F)	
Contamination Level 污染標準		ISO4406. 21/19/16 NAS1638,10	
Surface Treatment 表面處理		Zinc Phosphate Compound 鋅 磷酸鹽 化合物	

● All screws with metric measure, if require inch measure, please contact us.
 所附螺絲皆為公制標準規格品，若需英制螺絲請另外備註說明。

◆ HOW TO ORDER 編號說明

1	2	3	4	5
LVSH	— 03	G	— **	— 20

1 VALVE SERIES 系列名稱
 LVSH= Solenoid Check Valves

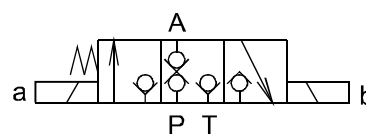
4 TYPE OF COIL 電磁閥電磁線圈類型
 A1 : AC110 60HZ D1 : DC12
 A115 : AC115 50HZ D2 : DC24
 A230 : AC230 50HZ R1 : RF110 60HZ/50HZ
 A2 : AC220 60HZ R2 : RF220 60HZ/50HZ

2 SUBPLATE MOUNTING SIZE: 稱呼口徑
 03= 3/8"(9mm)
 ISO CETOP5
 DIN NG 10
 NFPA D05

5 DESIGN NO 設計編號

3 CONNECTING TYPE 連接型式
 G:TYPE:BASEPLATE MOUNTING TYPE
 G : (板式連接)

◆ CONTROL PORT(S) 動作形式



SOLENOID CHECK VALVES

LVSH-03G

電磁止逆閥

◆ DIMENSIONS 外型尺寸圖

LVSH-03G-W

● Mounting Interface 安裝板面

ISO 4401-AC-05-4-A

A
LVSH

