

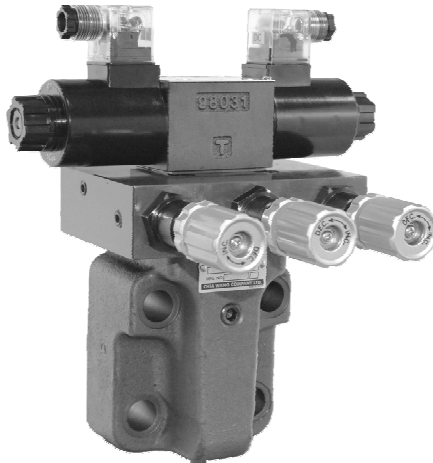
SOLENOID CONTROLLED RELIEF VALVES

電磁式溢流閥

SPRV SERIES

◆ MODEL 型 式

SPRV-03G



- Which this System By Relief & Solenoids Valves Assembly to purposal Double pressure & Triplicate Pressure control. Apply Electric Symbol and The Pump can be Loading Out and to Available Pilot operated Relief Vales.
- 此系列閥是溢流閥和電磁閥的組合閥，可利用電氣信號使幫浦卸載也可利用先導式溢流閥，使液壓系統得到雙壓或三壓控制

◆ SPECIFICATIONS 規 格

Model Number 型式號碼	Maximum Pressure 最大壓力 bar	Connecting PT 適用管徑	Maximum Flow 最大流量 lpm	Weight 重量 Kg
SPRV-03G-**	315 (4500 psi)	3/8"	90 (23.78 gpm)	7.8 (17.2 lbs)
SPRV-03T- **				7 (15.4 lbs)
SPRV-06G-**		3/4"	200 (52.84 gpm)	9 (19.8 lbs)
SPRV-06T- **				8.5 (18.7 lbs)
SPRV-10G-**				16 (35.3 lbs)
Fluid Type 流體型式		ISO VG 32 , 46 , 68		
Viscosity 黏性 cSt		10~400 (59~1854 SSU)		
Operating Temperature 操作溫度 °C		-15~70 (-5~158 °F)		
Contamination Level 污染標準		ISO4406. 21/19/16 NAS1638,10		

- All screws with metric measure , if require inch measure , please contact us.
所附螺絲皆為公制標準規格品，若需英制螺絲請另外備註說明。

◆ HOW TO ORDER 編號說明

1	2	3	4	5	6	7
SPRV	03	G	*	2A	**	30

1 VALVE SERIES 系列名稱
SPRV=Solenoid Controlled Relief Valves

2 SUBPLATE MOUNTING SIZE: 稱呼口徑

03 = 3/8"(9mm) ISO CETOP5 DIN NG 10 NFPA D05	06= 3/4"(19mm) ISO CETOP8 DIN NG 25 NFPA D08
10 = 1 1/4"(31.8mm) ISO CETOP10 DIN NG 32 NFPA D10	

3 CONNECTING TYPE 連接型式

T:TYPE:THREADING TYPE (螺紋連接)
G:TYPE:BASEPLATE MOUNTING TYPE (板式連接)

4 ADJUSTMENT PRESSURE 壓力調整範圍

- * - 70 bar
- . 8 - 140 bar
- . 8 - 250 bar
- . 8 - 315 bar

5 CONTROL TYPE 控制方式
See Control Port(s) 參照動作型式

2A : Two section pressure 二段式壓力
3B : Three section pressure 三段式壓力

6 COIL TYPES OF SOLENOID VALVE
電磁閥電磁線圈類型

A1: AC110 A2: AC220
D1: DC12 D2: DC24
R1: RF110 R2: RF220

7 WIRING TYPE 接線型式

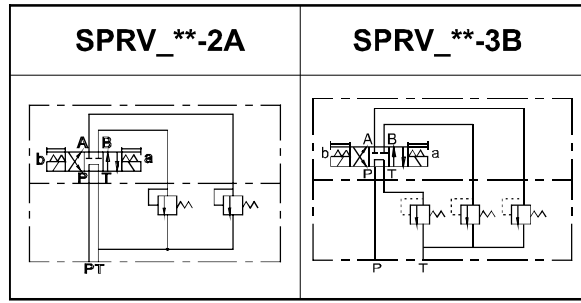
20: WIRING BOX TYPE 接線盒式
30: DIN TYPE DIN型

SOLENOID CONTROLLED RELIEF VALVES

SPRV SERIES

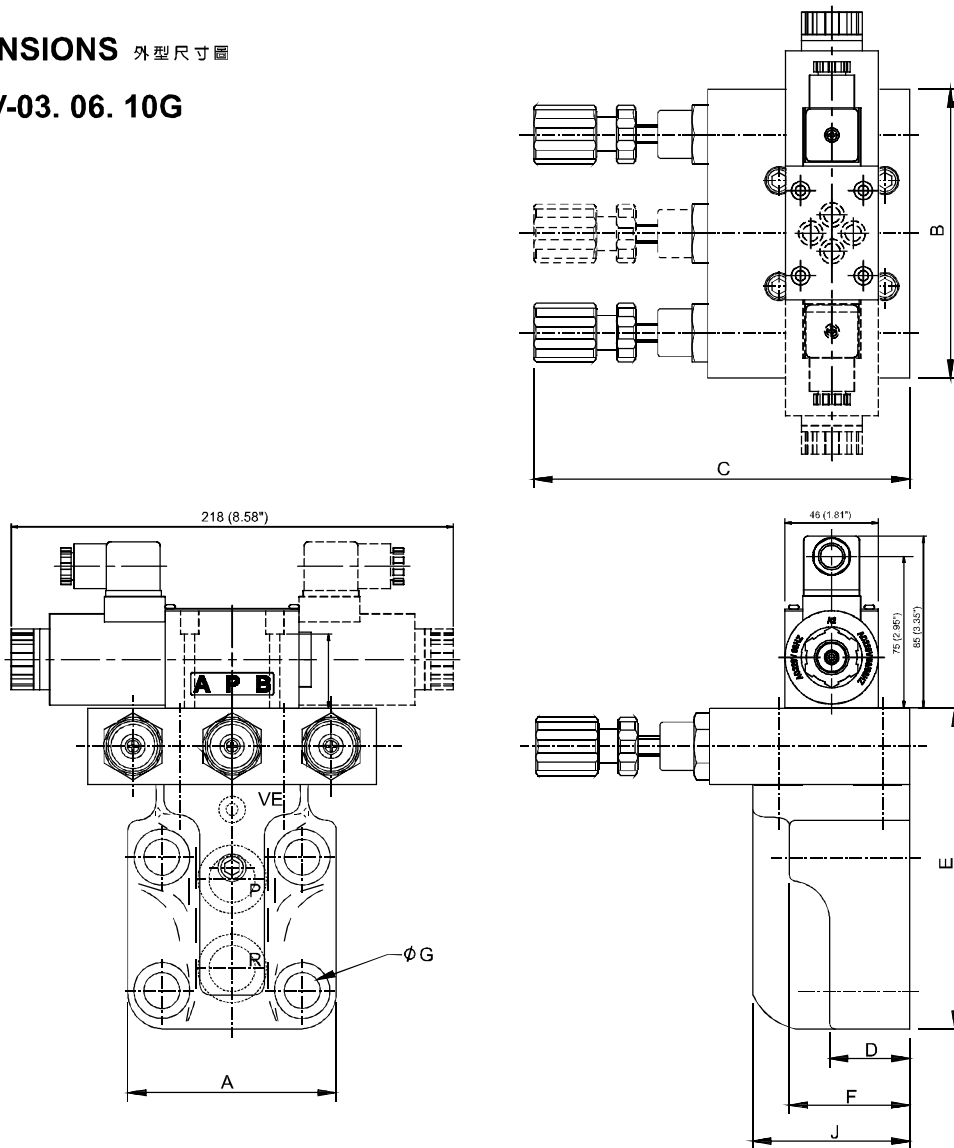
電磁式溢流閥

CONTROL PORT(S) 動作形式



DIMENSIONS 外型尺寸圖

SPRV-03. 06. 10G



MODEL	A	B	C	D	E	F	G	J
SPRV-03G	84(3.31")	140(5.51")	183(7.20")	57(2.24")	134(5.28")	78(3.07")	13.5(0.53")	--
SPRV-06G	105(4.13")	140(5.51")	183(7.20")	40(1.57")	160(6.30")	60(2.36")	18(0.71")	78(3.07")
SPRV-10G	126(4.96")	170(6.70")	183(7.20")	49(1.93")	194(7.64")	69(2.72")	21.5(0.85")	90(3.54")

● The install size of valve please refer the base seat drawing of type RVM-03 . 06

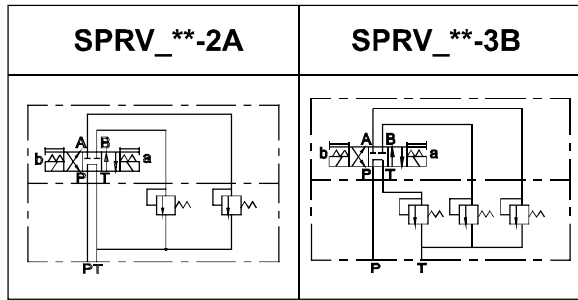
(註)閥安裝面尺寸參見RVM-03.06型底板尺寸圖

SOLENOID CONTROLLED RELIEF VALVES

電磁式溢流閥

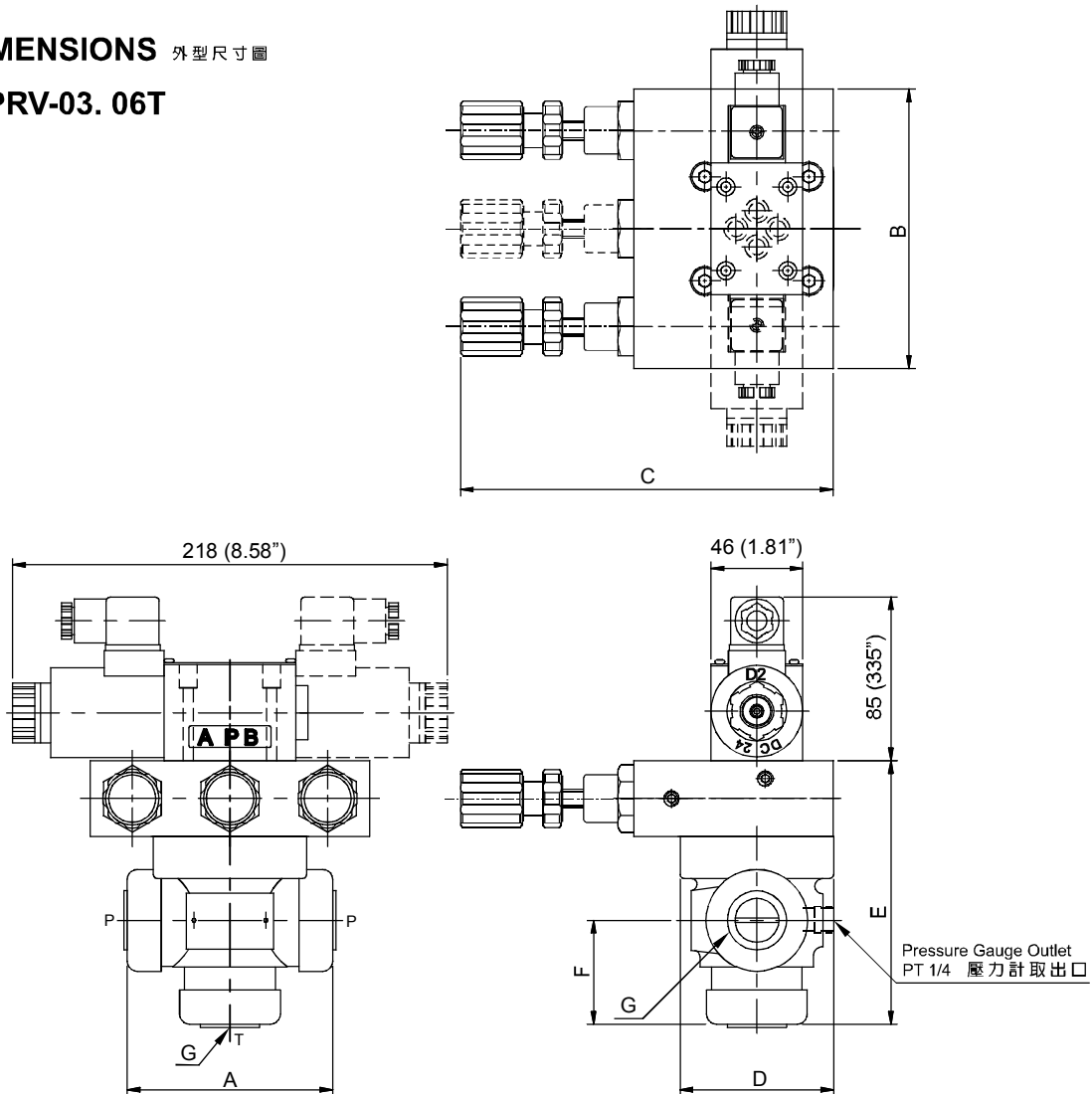
SPRV SERIES

CONTROL PORT(S) 動作形式



DIMENSIONS 外型尺寸圖

SPRV-03.06T



MODEL	A	B	C	D	E	F	G
SPRV-03T	103(4.06")	140(5.51")	174(6.85")	77(3.03")	132(5.20")	52(2.05")	PT 3/8
SPRV-06T	103(4.06")	140(5.51")	174(6.85")	77(3.03")	132(5.20")	52(2.05")	PT 3/4

● The install size of valve please refer the base seat drawing of type RVM-03 . 06

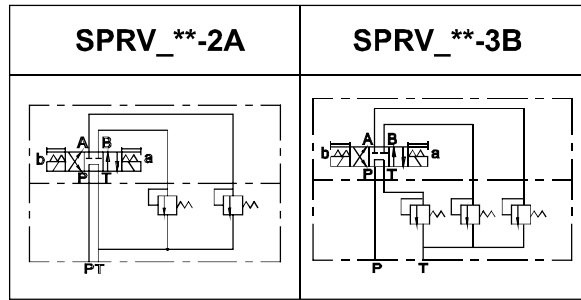
(註)閥安裝面尺寸參見RVM-03.06型底板尺寸圖

SOLENOID CONTROLLED RELIEF VALVES

SPRV SERIES

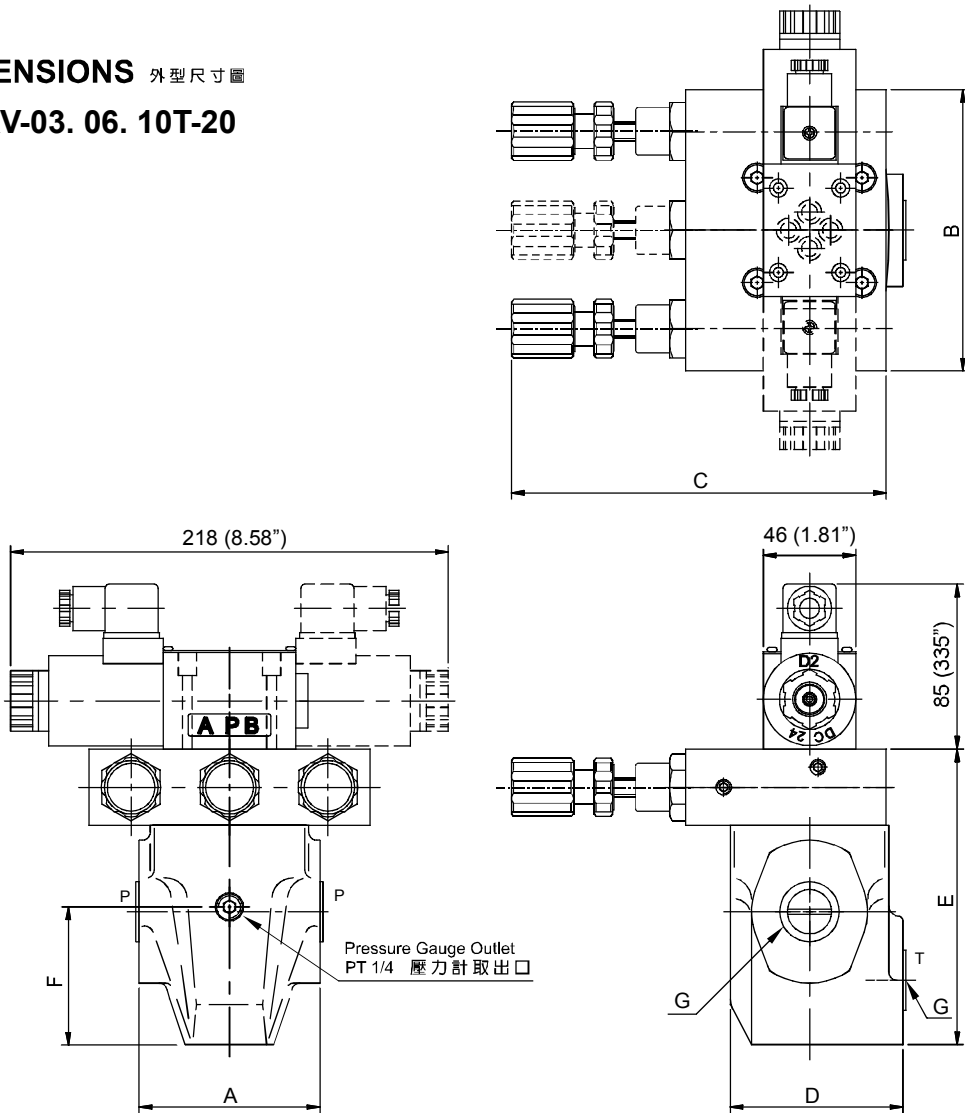
電磁式溢流閥

◆ CONTROL PORT(S) 動作形式



◆ DIMENSIONS 外型尺寸圖

SPRV-03. 06. 10T-20



MODEL	A	B	C	D	E	F	G
SPRV-03T-20	90(3.54")	140(5.51")	183(7.02")	86(3.39")	147(5.79")	68.5(2.70")	PT 3/8
SPRV-06T-20	90(3.54")	140(5.51")	183(7.02")	86(3.39")	147(5.79")	68.5(2.70")	PT 3/4
SPRV-10T-20	122(4.80")	170(6.70")	183(7.02")	96(3.78")	179(7.05")	87(3.43")	PT 1-1/4

● The install size of valve please refer the base seat drawing of type RVM-03 . 06

(註)閥安裝面尺寸參見RVM-03.06型底板尺寸圖