

SOLENOID OPERATED DIRECTIONAL VALVES

WEN SERIES

電磁換向閥

◆ MODEL 型式 WEN-02G



◆ FEATURES 特點

- Casting iron valve bodies are provided strength and durability for longer life.
- Internal hardened steel components also provide durable life.
- 閥本體鑄鐵強度夠且持久性、壽命長。
- 內部硬鋼原件提高產品壽命。

◆ SPECIFICATIONS 規格

Model Number 型式號碼	Maximum Pressure 最大壓力 bar	Maximum Tank Line Back Pressure 最大容許背壓 bar	Maximum Tank Frequencies Of Pressure 最高切換頻率 CPM	Maximum Flow 最大流量 lpm	Weight 重量 Kg
WEN-02G	210 (3045 bar)	70 (1015 bar)	300 CPM	12 (3.15 gpm)	1.5 (3.31 lbs)
Fluid Type 流體型式			ISO VG 32, 46, 68		
Viscosity 黏性 cSt			10~400 (59~1854 SSU)		
Operating Temperature 操作溫度 °C			-15~70 (-5~158° F)		
Contamination Level 污染標準			$\beta_{10} \geq 75$, Under NAS Class 12, 25 μ		
Surface Treatment 表面處理			Zinc Phosphate Compound 鋅 磷酸鹽 化合物		

● All of with Screens it's Cent meter Size and If required Inch Size 所附螺絲皆為公制標準規格品，若需英制螺絲請另外備註說明。

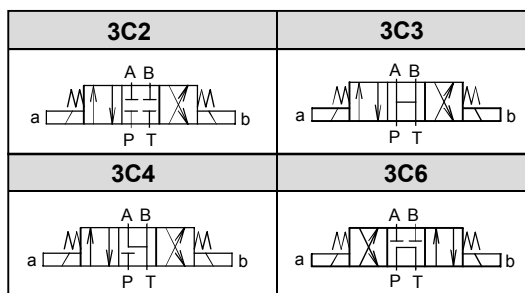
◆ HOW TO ORDER 編號說明

1	2	3	4	5	6
WEN	***	02G	D1	X10	*

1 VALVE SERIES 系列名稱

WEN = Solenoid Operated Directional Valves
電磁換向閥

2 SPOOL TYPE 滑柱型式



3 SUBPLATE MOUNTING SIZE 稱呼口徑

02G=1/4"(6mm) ISO CETOP3
DIN NG 6
NFPAD03

4 SOLENOID RATINGS 電磁定率

Electric source 電源	Coil Type 電磁線圈 類型	Voltage(V) 電壓	Current & Power At Rated Voltage 最大電壓的電流和電源功率	
		Source Rated 最大值	Holding Current 固定電流 (A)	Wattage 瓦特數
DC	D1	DC 12	2.2	26
	D2	DC 24	1.2	28

5 CONNECTOR TYPE 連接器型式

Detail as next page listed.
明細見下頁

6 COIL DIRECTION 線圈方向

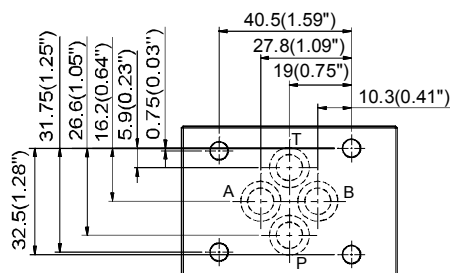
None Standard - Coil on B (right) side.
無記號 標準型 - 線圈在B邊(右邊)

L Coil on A (left) side. 線圈在A邊(左邊)

Detail as next page.
詳細見下頁

◆ Mounting Interface 基座尺寸圖

ISO 4401-AB-03-4-A



◆ TYPE OF COIL 線圈類型

Model number 型式編號: CON02
See Appendixes-D 見附錄 D

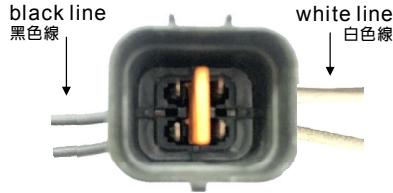
SOLENOID OPERATED DIRECTIONAL VALVES

WEN SERIES

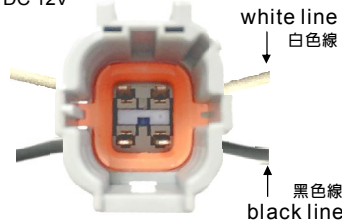
電磁換向閥

CONNECTOR TYPE 連接器型式

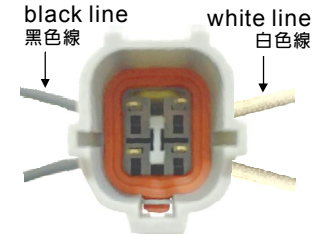
Order 編號	Type 型號	Model 型式
X10	FD10 - 30 MC,FC	Mitsubishi 三菱
DC 12V		
X11	FD10 - 30 T14	Zenoah 小松
X12	FD10 - 30 T16	
DC 12V		



Order 編號	Type 型號	Model 型式
X20	FD10 - 30N	Mitsubishi 三菱
DC 12V		
X21	FD50 - 100Z8	TCM
X22	FD35 - 45T8 / T9	
DC 12V		



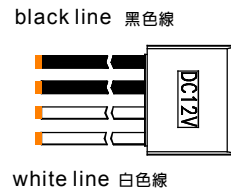
Order 編號	Type 型號	Model 型式
X30	FD50 - 100Z8	TCM
X31	FD35 - 45T8 / T9	
DC 24V		



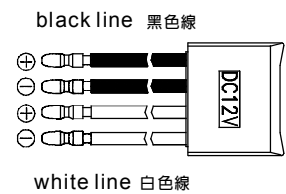
Order 編號	Type 型號	Model 型式	Coil direction 線圈方向
X40	G-53 / GL-530 / GL-600	Kubota 久保田	None
X41	GL-29 / GL-33 MR-60 / MR-70		L (A side A邊)



Order 編號	Type 型號
X4	Four Leads 四接線

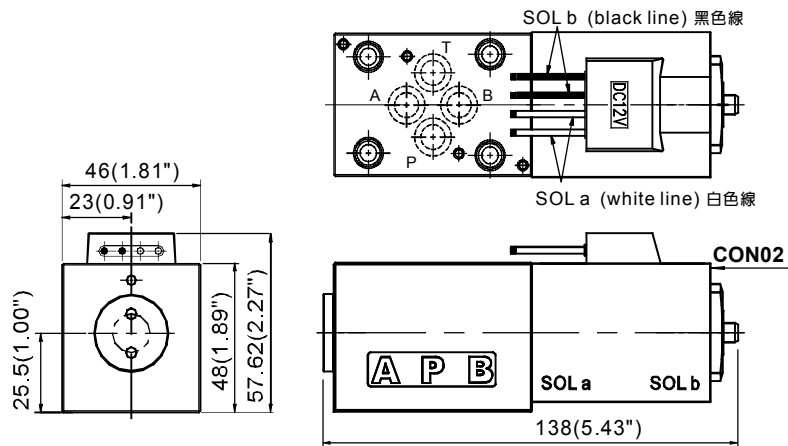


Order 編號	Type 型號
X4BD	Bullet Terminals 子彈型公端子



COIL DIRECTION 線圈方向

WEN-02G



WEN-02G-L

