

CHECK VALVES

CV SERIES

止逆閥

◆ MODEL 型 式



ISO CV-03G-50I



CV-03G

◆ FEATURES

- The installation of CV-50 series is of ISO specifications..
- Casting iron valve bodies are provided strength and durability for longer life.
- Internal hardened steel components also provide durable life.

特 點

- CV- 50系列安裝面為ISO之規格。
- 閥本體鑄鐵強度夠且耐久性，壽命長。
- 內部硬鋼原件提高產品壽命。

◆ SPECIFICATIONS 規 格

Model Number 型式號碼	Maximum Pressure 最大壓力 bar	Connecting PT 適用管徑	Maximum Flow 最大流量 lpm	Weight 重量 Kg	
				40 Type	50 Type
CV-03G-**-*	250 (3625 psi)	3/8"	60 (1.85 gpm)	1.9 (4.2 lbs)	2 (4.4 lbs)
CV-06G-**-*		3/4"	125 (33.02 gpm)	4.2 (9.3 lbs)	3.32 (7.3 lbs)
CV-10G-**-*		1 1/4"	250 (66.04 gpm)	7.7 (17 lbs)	6 (13.2 lbs)
Fluid Type 流體型式		ISO VG 32 , 46 , 68			
Viscosity 黏性 cSt		10~400 (59~1854 SSU)			
Operating Temperature 操作溫度 °C		-15~70 (-5~158°F)			
Contamination Level 污染標準		ISO4406. 21/19/16 NAS1638,10			

- All screws with metric measure , if require inch measure , please contact us.
所附螺絲皆為公制標準規格品，若需英制螺絲請另外備註說明。

◆ HOW TO ORDER 編號說明

1	2	3	4	5
CV	— 03	G	— *	— 40

1 VALVE SERIES 系列名稱
CV= Check Valves

2 SUBPLATE MOUNTING SIZE: 稱呼口徑

03 = 3/8"(9mm) ISO CETOP5 DIN NG 10 NFFPA D05	06= 3/4"(19mm) ISO CETOP8 DIN NG 25 NFFPA D08
10 = 1 1/4"(31.8mm) ISO CETOP10 DIN NG 32 NFFPA D10	

3 CONNECTING TYPE 連接型式
G:TYPE:BASEPLATE MOUNTING TYPE
(板式連接)

4 SPRING PRESSURE 彈簧開啓壓力
05 :0.5kg/cm²
50 : 5kg/cm²

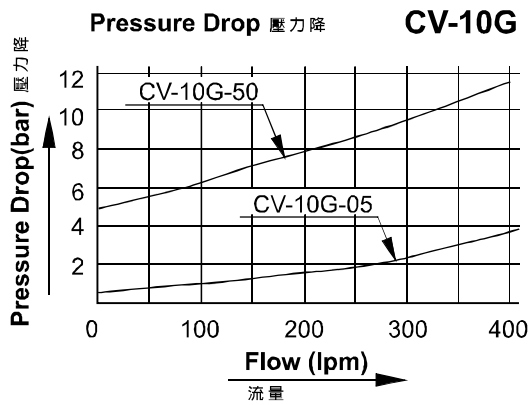
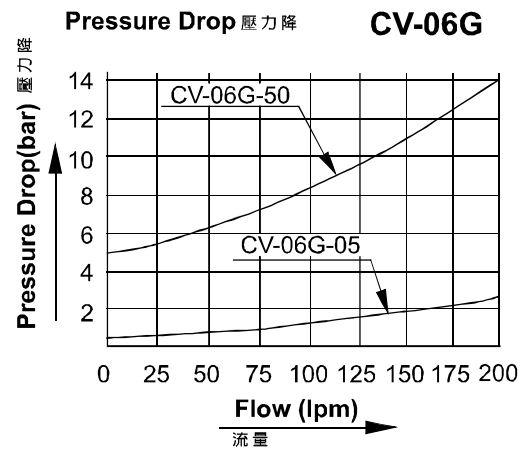
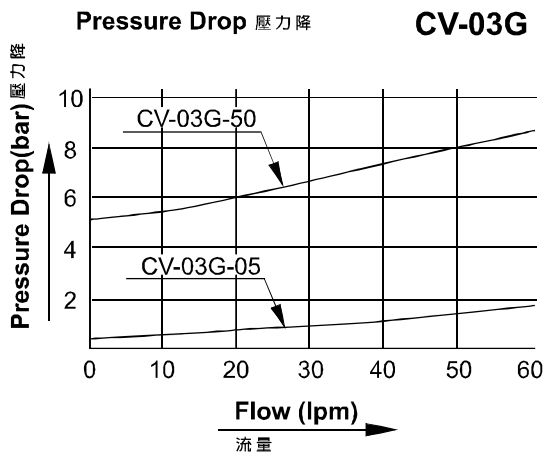
5 DESIGN NO 設計編號
50 I: ISO

◆ PERFORMANCE 性能

Test Conditions 測試條件

Oil Temperature 油溫度: 50°C (122°F)

Viscosity 黏度: 35 cSt (163 SSU)



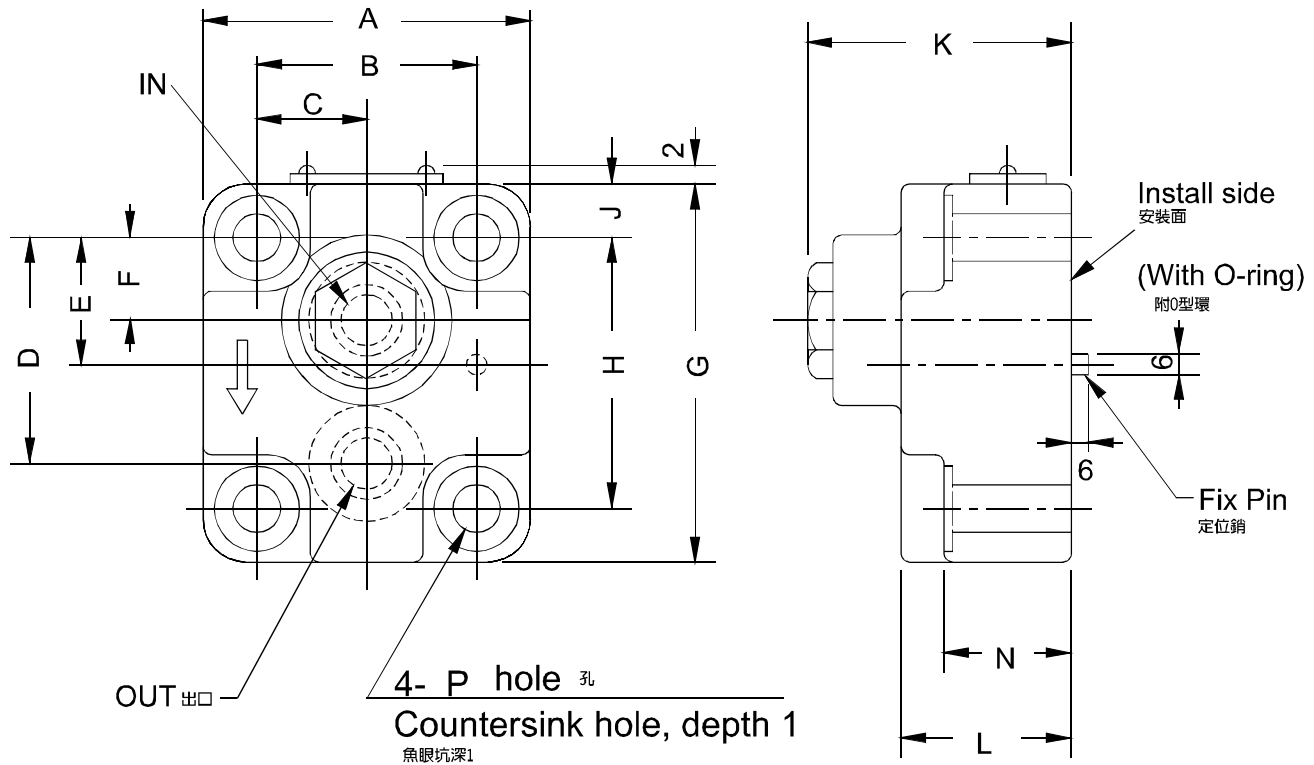
CHECK VALVES

CV SERIES

止逆閥

◆ DIMENSIONS 外型尺寸圖

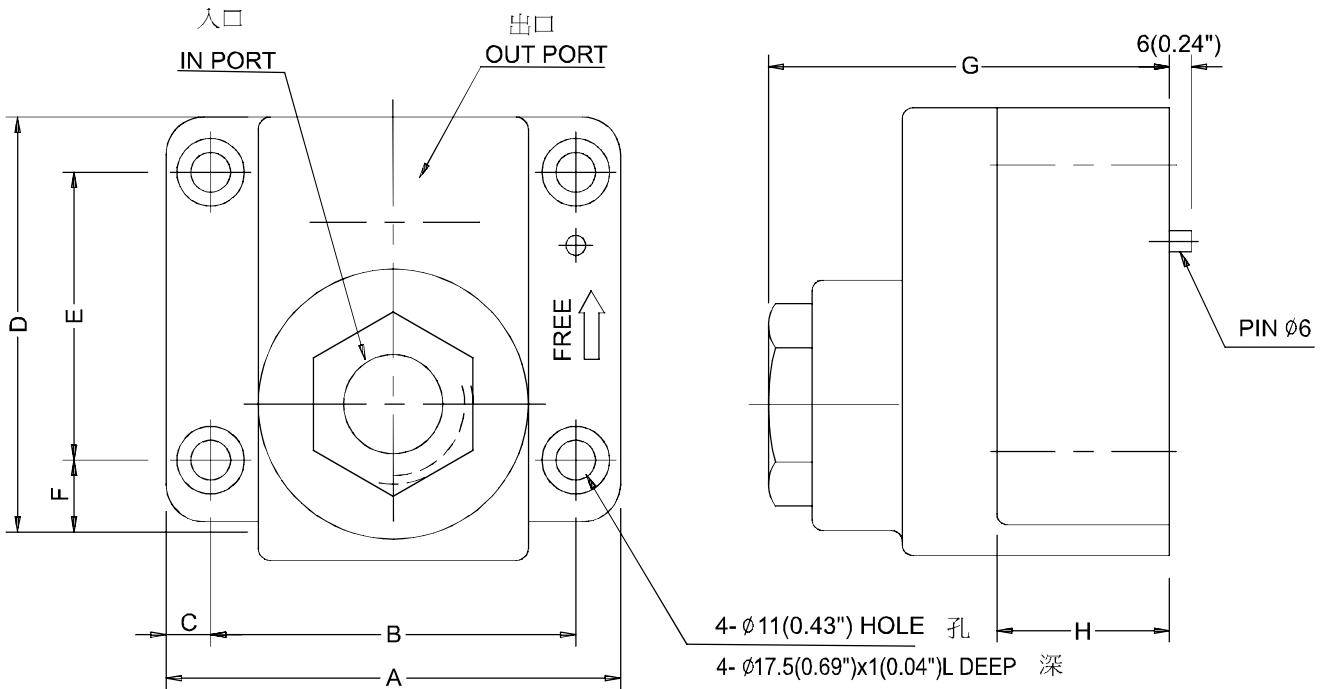
CV-03 . 06 . 10 - 40



MODEL 型號	A	B	C	D	E	F	G	H	J	K	L	N	P	Q
CV-03	68 (2.68")	47.6 (1.87")	23.8 (0.94")	47.6 (1.87")	30.1 (1.19")	12.7 (0.5")	80 (3.15")	60.3 (2.37")	10(0.39")R	72 (2.83")	55 (2.17")	36 (1.42")	11(0.43")	17.5(0.69")
CV-06	98 (3.86")	65.1 (2.56")	32.6 (1.28")	68.2 (2.69")	40.5 (1.59")	22.2 (0.87")	114 (4.49")	80.9 (3.19")	16.5 (0.65")	81(3.19")	53 (2.09")	43 (1.69")	17.5(0.69")	26(1.06")
CV-10	130 (5.12")	92.1 (3.63")	46.1(1.81")	71.4 (2.81")	46(1.81")	20.6(0.81")	130 (5.12")	92.1 (3.63")	19(0.5")	96 (3.78")	65 (2.56")	43(1.69")	21.5(0.85")	32(1.26")

◆ DIMENSIONS CV-03.06-50

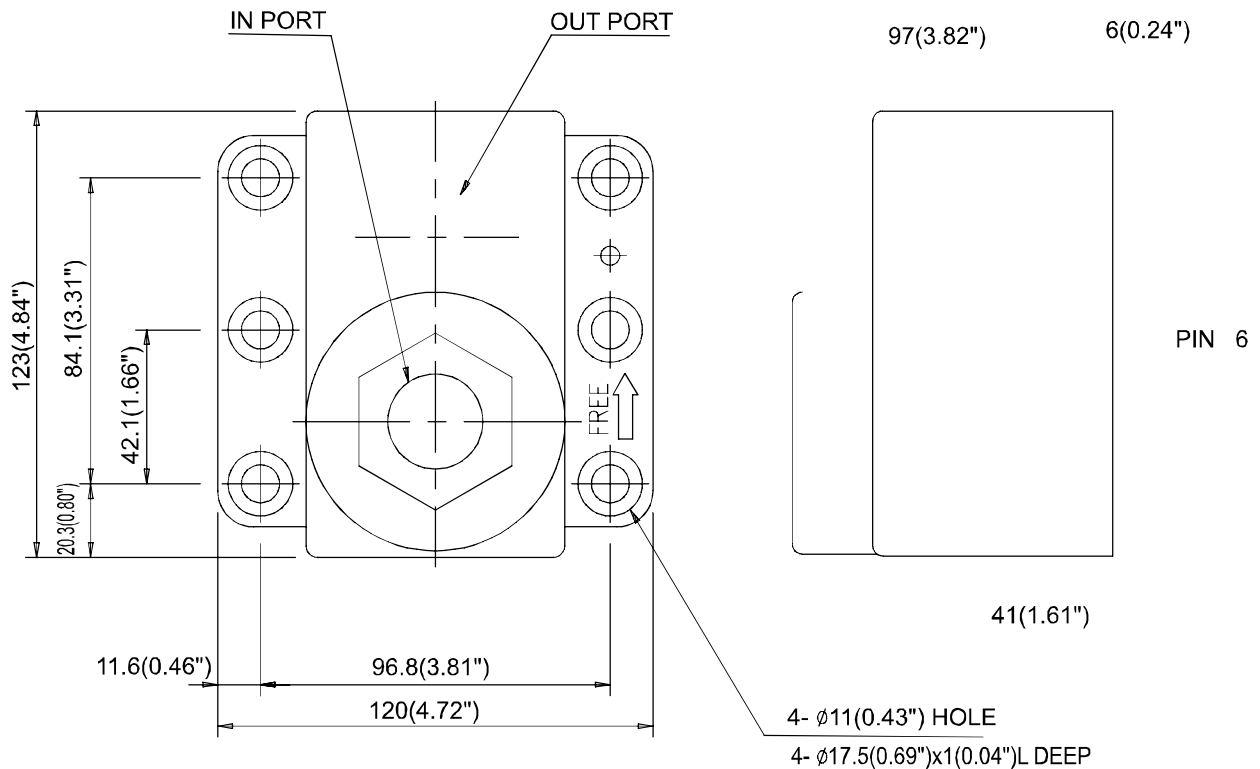
03G : ISO 5781-AG-06-2-A
06G : ISO 5781-AH-08-2-A



MODEL	A	B	C	D	E	F	G	H
CV-03G-50	90(3.54")	66.7(2.63")	11.7(0.46")	72(2.83")	42.9(1.69")	17.5(0.69")	72.5(2.85")	31(1.22")
CV-06G-50	102(4.02")	79.4(3.13")	11.3(0.44")	93(3.66")	60.3(2.37")	21.4(0.84")	84(3.31")	36(1.42")

CV-10-50

10G : ISO 5781-AJ-10-2-A

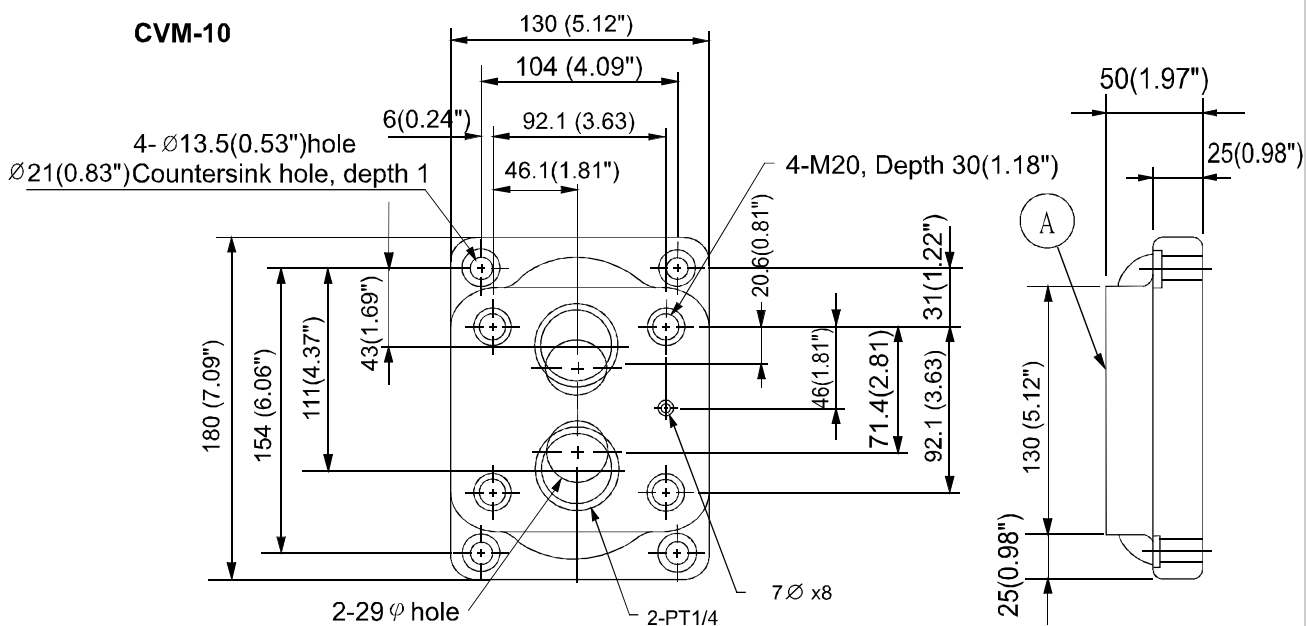
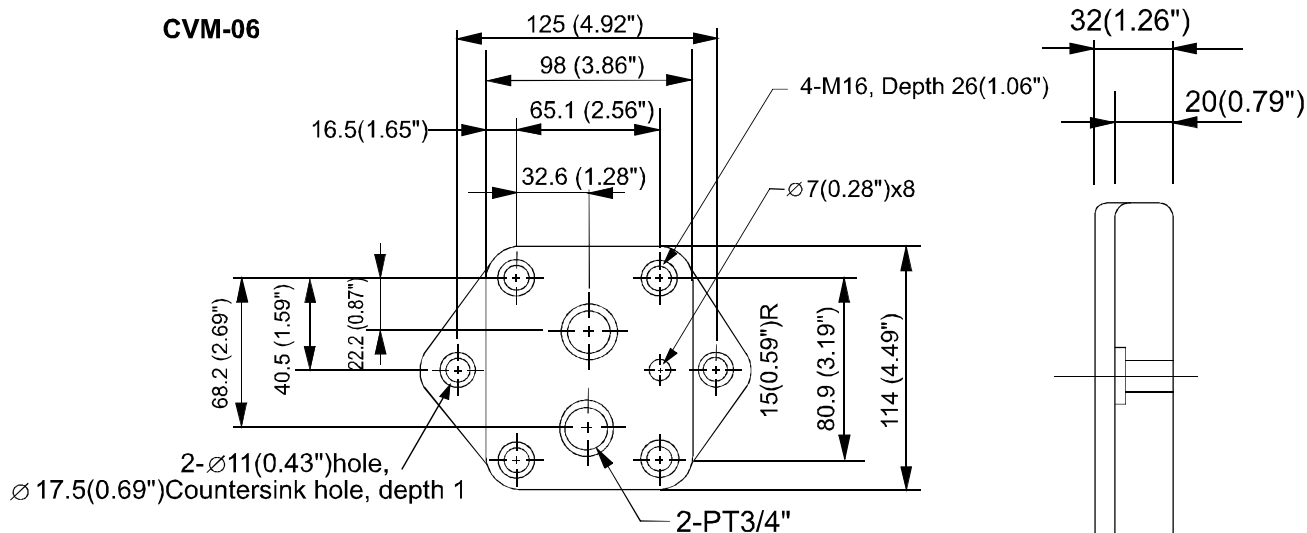
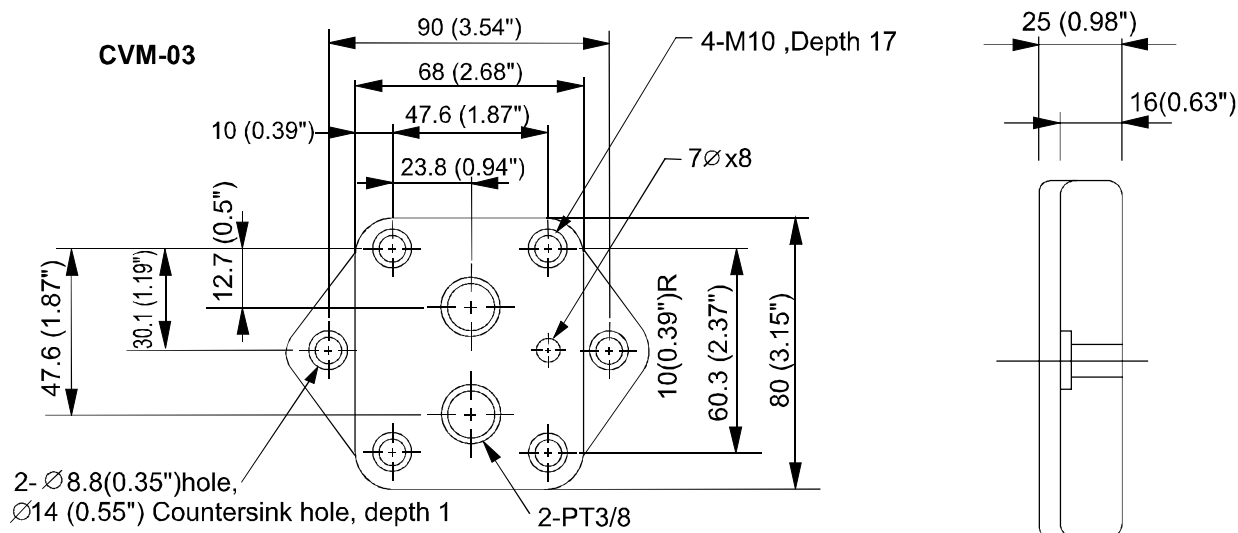


CHECK VALVES

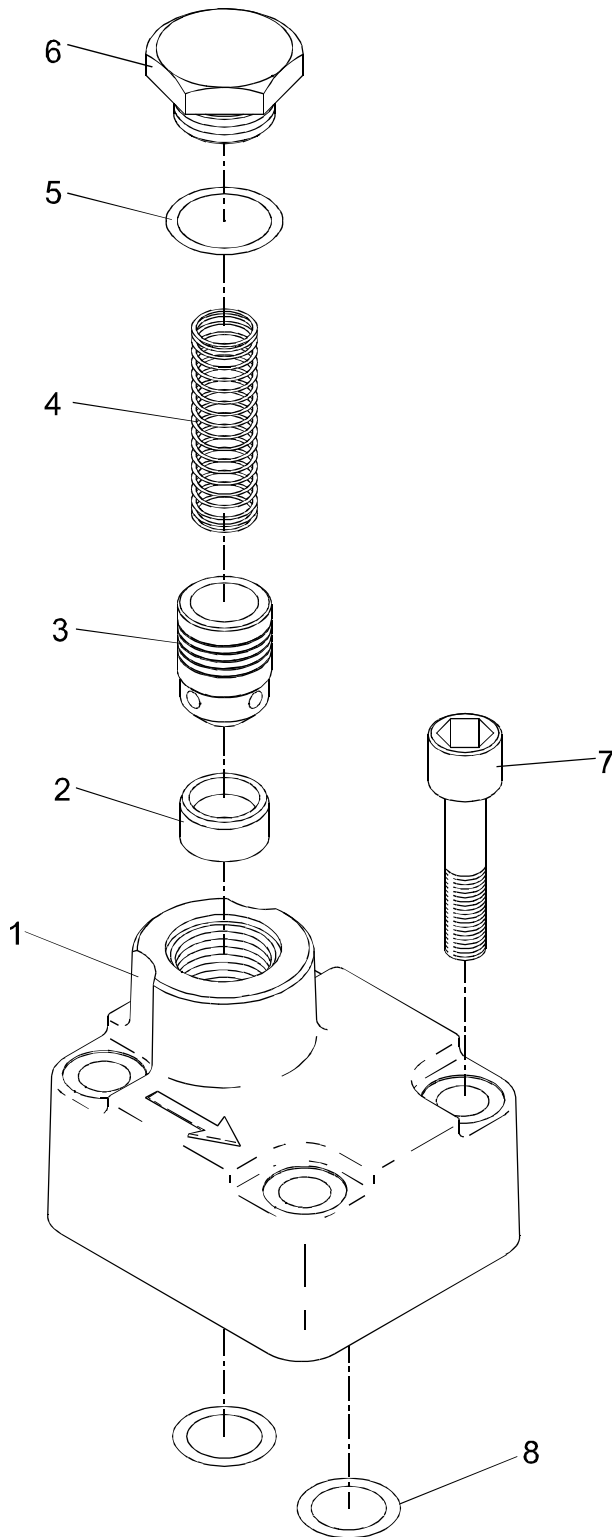
CV SERIES

止逆閥

◆ DIMENSIONS FOR BASEPLATE 基座尺寸圖



◆ PARTS LIST OF CV-03 . 06 . 10 SERIES 零件爆炸視圖



◆ SEAL KITS 油封配件

CV-03 品名 數量 規格

NO	Description	Q'ty	Specification
5	O-ring	1	P20
8	O-ring	2	P18

ACCESSORIES 附屬配件			
7	HEX. COUNTER-SINK SCREW	4	M10 x 1.5 x 45L M10 x 45L

CV-06

NO	Description	Q'ty	Specification
5	O-ring	1	P28
8	O-ring	2	P28

ACCESSORIES 附屬配件			
7	HEX. COUNTER-SINK SCREW	4	M16 x 2.0 x 55L M16 x 55L

CV-10

NO	Description	Q'ty	Specification
5	O-ring	2	P40
8	O-ring	4	P40

ACCESSORIES 附屬配件			
7	HEX. COUNTER-SINK SCREW	4	M20 x 65L

CV-03-50I

NO	Description	Q'ty	Specification
5	O-ring	1	P20
8	O-ring	2	P18

ACCESSORIES 附屬配件			
7	HEX. COUNTER-SINK SCREW	4	M10 x 45L

CV-06-50I

NO	Description	Q'ty	Specification
5	O-ring	1	P28
8	O-ring	2	P28

ACCESSORIES 附屬配件			
7	HEX. COUNTER-SINK SCREW	4	M10 x 50L

CV-10-50I

NO	Description	Q'ty	Specification
5	O-ring	2	P40
8	O-ring	4	P40

ACCESSORIES 附屬配件			
7	HEX. COUNTER-SINK SCREW	6	M10 x 55L