

# HYDRAULIC ACCESSORIES

油壓附屬零件

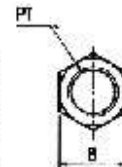
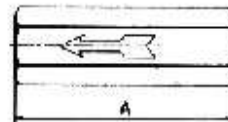
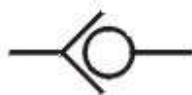
## FLUID LEVEL & TEMPERATURE GAUGES 油面計



### ◆ SPECIFICATIONS 規格

型式編號 Model	A mm	B mm	C mm	D mm	E mm	F mm	重量 Weight kg
LS-3"	118	41	80	18	37	M10	0.18
LS-7"	180	52	127	19.5	46	M12	0.33
KS-3"	101	36.5	76	19	38	M10	0.10
KS-5"	151		127				0.12
LG-3"	105	25	74.5	13	46.5	M10	0.12
LG-4"	130		99				0.13
LG-5"	155		127				0.14
LG-200	230	28	200	25	54	M12	0.29
LG-300	330		300		63		0.38
LG-400	430		400		54		0.44
LG-500	530		500				0.52

## INLINE CHECK VALVES 防逆閥



### ◆ SPECIFICATIONS 規格

Model 型式編號	PT 口徑	A mm	B mm	Flow 流量 l/min	Max. Pressure 最高壓力 kgf/cm <sup>2</sup>	Weight 重量 kg
CV-03T	3/8"	74	23	40	210	0.18
CV-04T	1/2"	81	29	60		0.33
CV-06T	3/4"	91	35	100		0.48
CV-08T	1"	114	46	150		1.10
CV-10T	1 1/4"	133	56	200		1.98
CV-12T	1 1/2"	134	66	280		2.78
CV-16T	2"	153	76.5	400		3.64
CIT-03T	3/8"	74	23	40	315	0.18
CIT-04T	1/2"	81	29	60		0.33
CIT-06T	3/4"	91	35	100		0.48
CIT-08T	1"	114	46	150		1.10
CIT-10T	1 1/4"	133	56	200		1.98
CIT-12T	1 1/2"	134	66	280		2.78
CIT-16T	2"	153	76.5	400		3.64

Remarks : The valve crack pressure of CV inline check valve are 0.5kgf/cm<sup>2</sup> and 5kgf/cm<sup>2</sup>

註：CV型號作動壓力可分為0.5kgf/cm<sup>2</sup>與5kgf/cm<sup>2</sup>兩種。