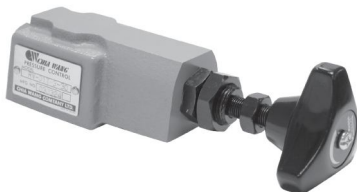


REMOTE CONTROL RELIEF VALVES

RV SERIES

溢流閥

◆ MODEL 型 式 RV-01T



◆ FEATURES

- Casting iron bodies are provided strength and durability for longer life.
- Internal hardened steel components also provide durable life.

- 特 點
- 鑄本體結構強度夠且耐久性、壽命長。
- 內部硬鋼零件提高產品壽命。

◆ SPECIFICATIONS 規 格

Model Number 型 式 號 碼	Maximum Pressure 最大壓力 bar	Connecting PT 適用管徑	Maximum Flow 最大流量 lpm	Weight 重 量 Kg
RV-01G	315 (4500 psi)	1/8"	2 (0.53 gpm)	1.2 (2.7 lbs)
RV-01T				1.4 (3.1 lbs)
Fluid Type 液體型 式		ISO VG 32 , 46 , 68		
Viscosity 黏 性 cSt		10~400 (59~1854 SSU)		
Operating Temperature 操作溫度 °C		-15~70 (-5~158°F)		
Contamination Level 污染標準		ISO4406, 21/19/16 NAS1638,10		

- All screws with metric measure , if require inch measure , please contact us.

所附螺絲皆為公制標準規格，若需要則螺絲請另外備註說明。

◆ HOW TO ORDER 編號說明

1	2	3	4	5
RV	01	*	1	30

1 VALVE SERIES 系列名稱
RV=Relief Valves

2 SUBPLATE MOUNTING SIZE: 編碼口徑
01= 1/8"(3mm)

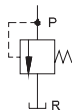
3 CONNECTING TYPE 連接型式
T:TYPE:THREADING TYPE (螺紋連接)
G:TYPE:BASEPLATE MOUNTING TYPE (板式連接)

4 ADJUSTMENT PRESSURE 壓力調整範圍

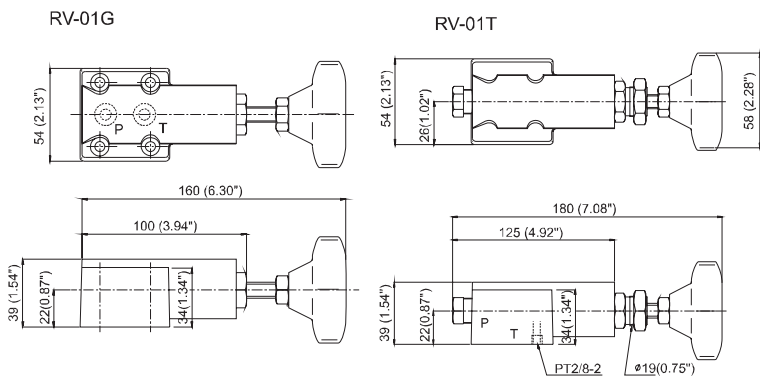
1. * - 70 bar
2. 8 - 140 bar
3. 8 - 250 bar
4. 8 - 315 bar

5 DESIGN NO 設計編號

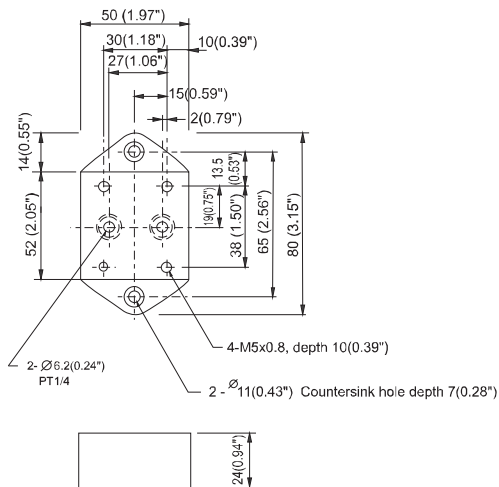
◆ CONTROL PORT(S) 動作形式



◆ DIMENSIONS 外型尺寸圖



◆ Mounting Interface 基準尺寸圖



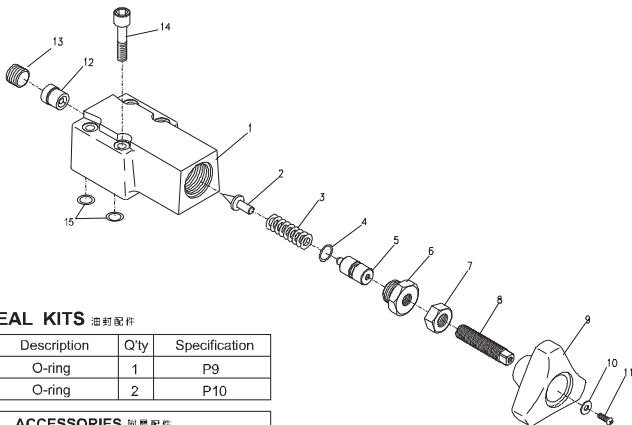
REMOTE CONTROL RELIEF VALVES

RV SERIES

溢流閥

◆ EXPLODED VIEWS OF PARTS LIST 零件爆炸視圖

RV-01G



◆ SEAL KITS 油封配件

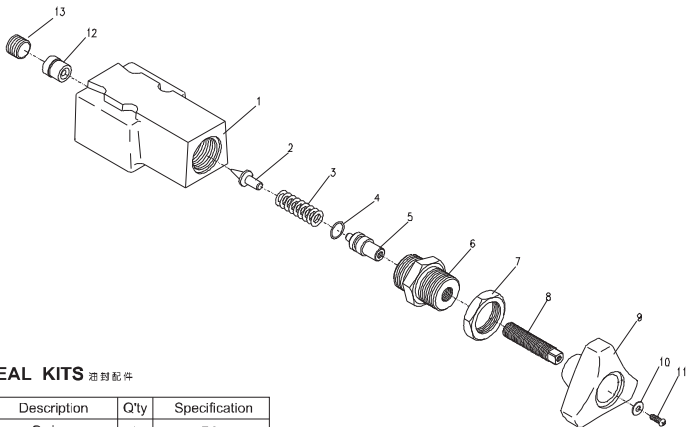
NO	Description	Q'ty	Specification
4	O-ring	1	P9
15	O-ring	2	P10

ACCESSORIES 附屬配件

14	HEX. COUNTER-SINK SCREW	4	M5 x 40L
----	-------------------------	---	----------

◆ EXPLODED VIEWS OF PARTS LIST 零件爆炸視圖

RV-01T



◆ SEAL KITS 油封配件

NO	Description	Q'ty	Specification
4	O-ring	1	P9