

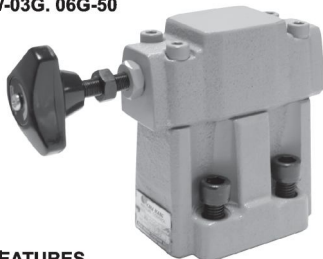
# PILOT OPERATED RELIEF VALVES

## RV SERIES

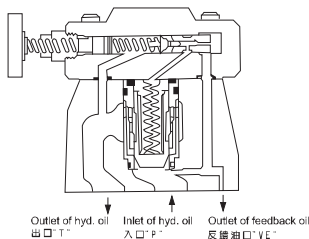
溢流閥

### ◆ MODEL 型 式

RV-03G, 06G-50



### ◆ SECTION 剖 面 圖



- 特 點
- 規本體論證強度均耐久性、壽命長。
- 內部鍍鉻零件提高防腐壽命。

### ◆ FEATURES

- Casting iron bodies are provided strength and durability for longer life.
- Internal hardened steel components also provide durable life.

### ◆ SPECIFICATIONS 規 格

Model Number 型 式 號 碼	Maximum Pressure 最大壓力 bar	Connecting PT 適用管徑	Maximum Flow 最大流量 lpm	Weight 重 量 Kg
RV-03G--50	250 (3625 psi)	3/8"	100 (26.42 gpm)	4.7 (10.4 lbs)
RV-06G--50		3/4"	200 (52.84 gpm)	6 (13.2 lbs)
RV-10G--50		1-1/4"	400 (105.678 gpm)	11.5 (25.4 lbs)
Fluid Type 液體類型		ISO VG 32, 46, 68		
Viscosity 黏性 cSt		10~400 (59~1854 SSU)		
Operating Temperature 操作溫度 °C		-15~70 (-5~158 °F)		
Contamination Level 污染標準		ISO4406, 21/19/16 NAS1638,10		

● All screws with metric measure, if require inch measure, please contact us.

所附螺絲皆為公制標準規格品，若需英制螺絲請與外銷註說明。

### ◆ HOW TO ORDER 編號說明

1	2	3	4	5	6
RV	— 03	* —	3	— L	— 50

#### 1 VALVE SERIES 系列名稱

RV= Relief Valves

#### 2 SUBPLATE MOUNTING SIZE: 喉口直徑

03 = 3/8"(9mm)      06= 3/4"(19mm)  
 ISO CETOP5      ISO CETOP8  
 DIN NG 10      DIN NG 25  
 NFPA D05      NFPA D08

10 = 1 1/4"(31.8mm)  
 ISO CETOP10  
 DIN NG 32  
 NFPA D10

#### 3 CONNECTING TYPE 連接形式

G:TYPE:BASEPLATE MOUNTING TYPE (板式連接)

#### 4 ADJUSTMENT PRESSURE 壓力調整範圍

1. \* - 70 bar    2. 8 - 140 bar    3. 8 - 250 bar

#### 5 ORIENTATION 調整方向

NONE: T ORIENTATION (Standard) 類: T方向(標準型)  
 L: P ORIENTATION      L: P方向

☞ See Next Page 參照下頁

#### 6 DESIGN NO 設計編號

50: low noise, pressure regulating valve  
 50型-低噪聲調壓閥

#### ◆ CONTROL PORT(S) 動作形式



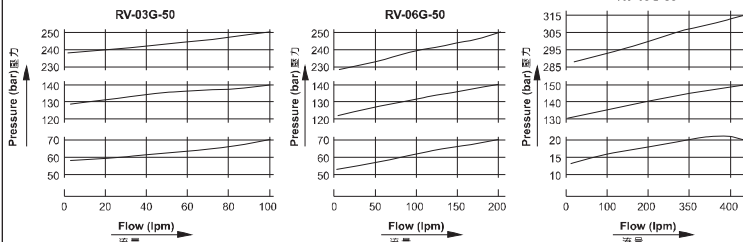
## ◆ PERFORMANCE 性能

Test Conditions 測試條件

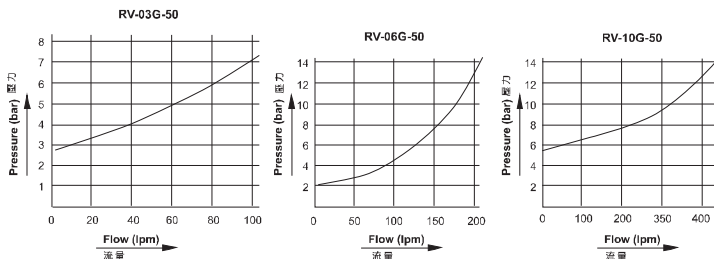
Oil Temperature 油溫: 50°C (122°F)

Viscosity 黏度: 35 cSt (163 SSU)

### Flow-Pressure Characteristic 流量壓力特性

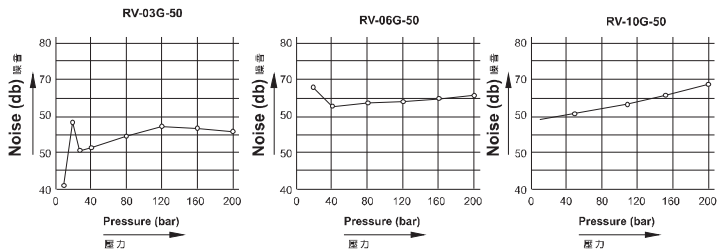


### Minimum Adjustment Pressure 最低調整壓力



### Noise Characteristic 噪音特性

Flow 150 l/min  
流量



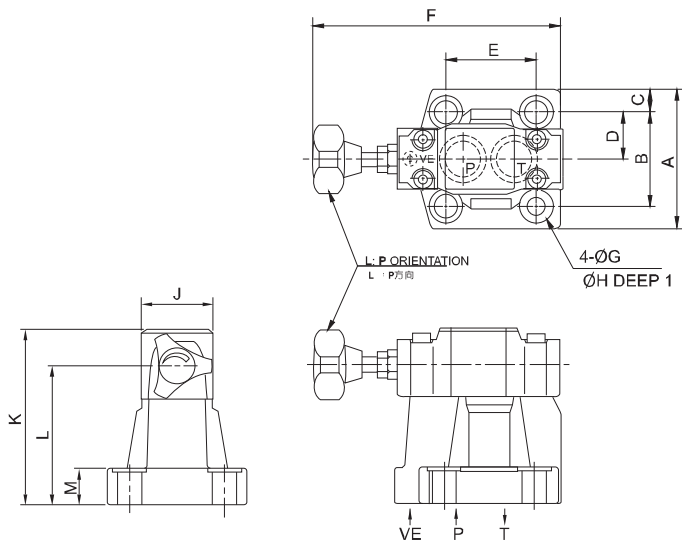
# PILOT OPERATED RELIEF VALVES

## RV SERIES

溢流閥

### ◆ DIMENSIONS 外型尺寸圖

RV-03G. 06G. 10G-50



ACCESSORIES 附裝配件			
RV-03G-50	HEX COUNTER-SINK SCREW	4	M12 x 40L
RV-06G-50	HEX COUNTER-SINK SCREW	4	M16 x 50L
RV-10G-50	HEX COUNTER-SINK SCREW	4	M20 x 60L

MODEL	A	B	C	D	E	F
RV-03G-50	76(2.99")	53.8(2.12")	11.1(0.44")	26.9(1.06")	53.8(2.12")	171(6.73")
RV-06G-50	104(4.09")	70(2.76")	17(0.67")	35(1.38")	66.7(2.63")	171(6.73")
RV-10G-50	120(4.72")	82.6(3.25")	18.7(0.74")	41.3(1.63")	88.9(3.50")	188(7.40")

MODEL	G	H	J	K	L	M
RV-03G-50	13.5(0.53")	21(0.83")	51(2.0")	128(5.04")	102(4.02")	22(0.87")
RV-06G-50	17.5(0.69")	25(0.98")	51(2.0")	130(5.12")	105(4.13")	27(1.06")
RV-10G-50	21.5(0.85")	32(1.26")	65(2.56")	127(5.0")	135(5.31")	33.5(1.32")