

◆ MODEL 型 式

RV-03T. 06T. 10T-20



◆ FEATURES

- Casting iron bodies are provided strength and durability for longer life.
- Internal hardened steel components also provide durable life.

- 特 點
- 鑄本體結構強韌且耐久性，壽命長。
- 內部鋼製零件提高產品壽命。

◆ SPECIFICATIONS 規 格

Model Number 型式號碼	Maximum Pressure 最大壓力 bar	Connecting PT 適用管徑	Maximum Flow 最大流量 lpm	Weight 重 量 Kg
RV-03T-★-20	315 (4500 psi)	3/8"	90 (23.78 gpm)	5.5 (12.1 lbs)
RV-06T-★-20		3/4"	200 (52.84 gpm)	5.5 (12.1 lbs)
RV-10T-★-20		1-1/4"	400 (105.678 gpm)	9 (19.8 lbs)
Fluid Type 液體型式			ISO VG 32, 46, 68	
Viscosity 黏性 cSt			10~400 (59~1854 SSU)	
Operating Temperature 操作溫度 °C			-15~70 (-5~158 °F)	
Contamination Level 污染標準			ISO4406. 21/19/16 NAS1638,10	

● All screws with metric measure, if require inch measure, please contact us.

所附螺絲皆為公制標準規格者，若需英制螺絲請向廠外備註說明。

◆ HOW TO ORDER 編號說明

1	2	3	4	5
RV	03	*	3	20

1 VALVE SERIES 系列名稱

RV= Relief Valves

2 SUBPLATE MOUNTING SIZE: 稱呼口徑

03 = 3/8"(9mm) 06 = 3/4"(19mm)
 ISO CETOP5 ISO CETOP8
 DIN NG 10 DIN NG 25
 NFPA D05 NFPA D08

10 = 1 1/4"(31.8mm)
 ISO CETOP10
 DIN NG 32
 NFPA D10

3 CONNECTING TYPE 連接型式

T:TYPE:THREADING TYPE (螺紋連接)

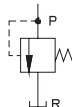
4 ADJUSTMENT PRESSURE 壓力調整範圍

1. ★ - 70 bar
2. 8 - 140 bar
3. 8 - 250 bar
4. 8 - 315 bar

5 DESIGN NO 設計編號

20: YUKEN specification
 20型-20N型規格

◆ CONTROL PORT(S) 動作形式



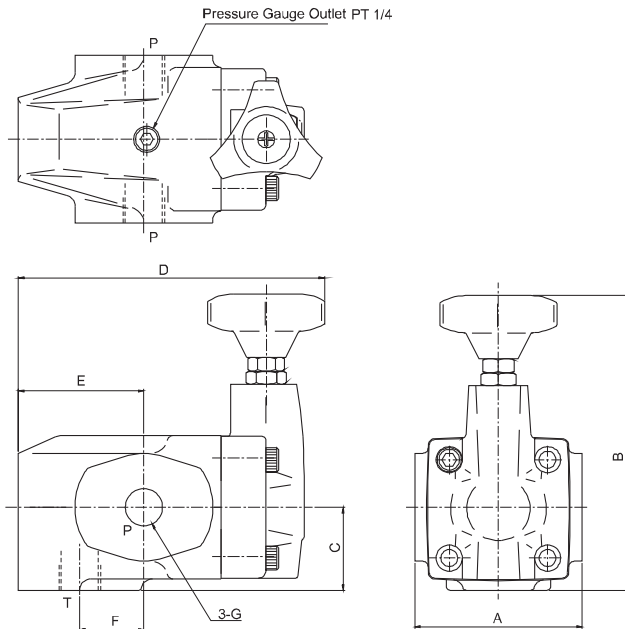
PILOT OPERATED RELIEF VALVES

RV SERIES

溢流閥

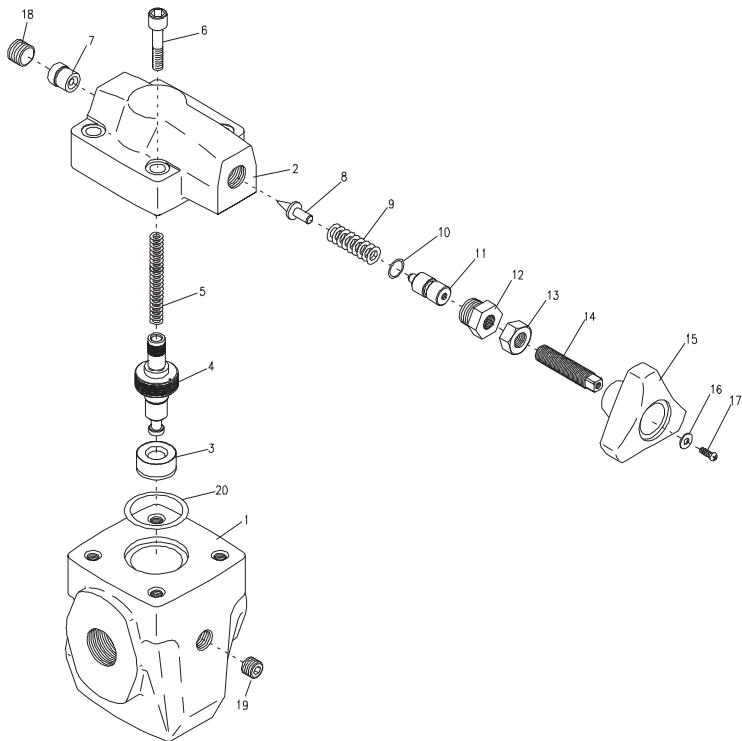
◆ DIMENSIONS 外形尺寸圖

RV-03T, 06T, 10T-20



MODEL	A	B	C	D	E	F	G
RV-03T-20	90(3.54")	175(6.89")	48(1.89")	164(6.46")	67(2.64")	35(1.37")	PT3/8
RV-06T-20	90(3.54")	175(6.89")	48(1.89")	164(6.46")	67(2.64")	35(1.37")	PT3/4
RV-10T-20	120(4.72")	186(7.32")	50(1.97")	186(7.32")	89(3.50")	49(1.93")	PT1/4

◆ EXPLODED VIEWS OF PARTS LIST 零件爆炸視圖
RV-03T. 06T. 10T



◆ ACCESSORIES 附屬配件

RV-03T / RV-06T			
NO	Description	Q'ty	Specification
10	O-ring	1	P9
20	O-ring	1	P31

RV-10T			
NO	Description	Q'ty	Specification
10	O-ring	1	P9
20	O-ring	1	P42