

◆ **MODEL 型式**  
RV-06G



◆ **FEATURES**

- Casting iron bodies provide strength and durability for longer life.
- Internal hardened steel components also provide longer life.

- 特 點
- 鑄不銹鋼強度優異且耐久，壽命長。
- 內部硬鋼原件提高產量壽命。

◆ **SPECIFICATIONS 規格**

Model Number 型式號碼	Maximum Pressure 最大壓力 bar	Connecting PT 適用管徑	Maximum Flow 最大流量 lpm	Weight 重量 Kg
RV-03G- <b>*</b> -30	315 (4500 psi)	3/8"	90 (23.78 gpm)	5.6 (12.3 lbs)
RV-04G- <b>*</b> -30			50 (23.78 gpm)	5.1 (11.2 lbs)
RV-04T- <b>*</b> -30		1/2"		2.8 (6.17 lbs)
RV-06G- <b>*</b> -30		3/4"	200 (52.84 gpm)	6.9 (15.2 lbs)
RV-06T- <b>*</b> -30			4.5 (9.9 lbs)	
RV-10G- <b>*</b> -30		1-1/4"	400 (105.678 gpm)	10.5 (23.1 lbs)
RV-10T (Mark 註)	9.5 (20.9 lbs)			
<b>Fluid Type</b> 液體型式		ISO VG 32, 46, 68		
<b>Viscosity</b> 黏性 cSt		10~400 (59~1854 SSU)		
<b>Operating Temperature</b> 操作溫度 °C		-15~70 (-5~158 °F)		
<b>Contamination Level</b> 污染標準		ISO4406, 21/19/16 NAS1638,10		

※Mark:10T is not in form type 30 (註)10T沒有生產30型

● All screws with metric measure, if require inch measure, please contact us.

所有螺絲皆為公制標準規格品，若需英制螺絲請另外備註說明。

◆ **HOW TO ORDER 編號說明**

<b>1</b>	<b>2</b>	<b>3</b>	<b>4</b>	<b>5</b>
RV	03	*	3	30

**1 VALVE SERIES** 系列名稱  
RV= Relief Valves

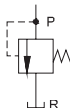
**2 SUBPLATE MOUNTING SIZE:** 朝野口徑  
03 = 3/8"(9mm)      06 = 3/4"(19mm)  
ISO CETOP5      ISO CETOP8  
DIN NG 10      DIN NG 25  
NFFA D05      NFFA D08  
  
10 = 1 1/4"(31.8mm)  
ISO CETOP10  
DIN NG 32  
NFFA D10

**3 CONNECTING TYPE** 連接型式  
T:TYPE:THREADING TYPE (螺紋連接)  
G:TYPE:BASEPLATE MOUNTING TYPE (板式連接)

**4 ADJUSTMENT PRESSURE** 壓力調整範圍  
1. \* - 70 bar  
2. 8 - 140 bar  
3. 8 - 250 bar  
4. 8 - 315 bar

**5 DESIGN NO** 設計編號

◆ **CONTROL PORT(S)** 動作形式



# PILOT OPERATED RELIEF VALVES

## RV SERIES

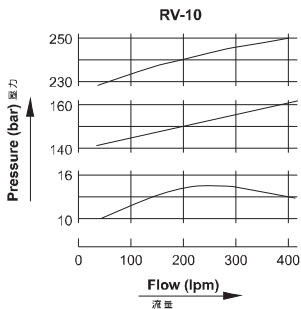
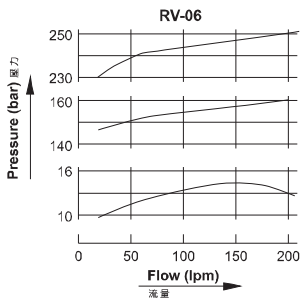
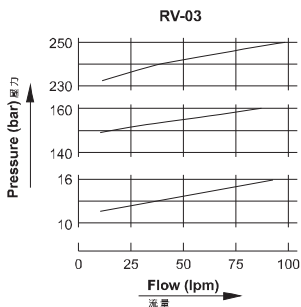
溢流閥

### ◆ PERFORMANCE 性能

Test Conditions 測試條件

Oil Temperature 油溫: 50°C (122°F)

Viscosity 黏度: 35 cSt (163 SSU)

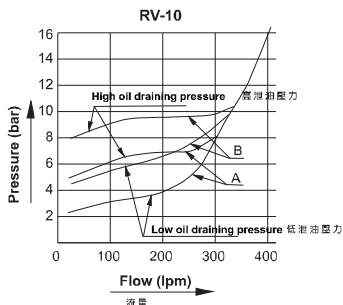
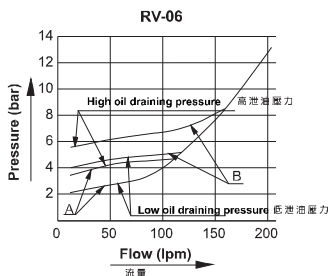
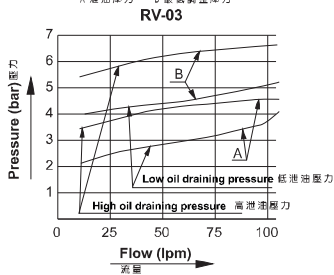


The minimum regulating pressure, oil draining pressure and flow curve

A: oil draining pressure B: minimum regulating pressure

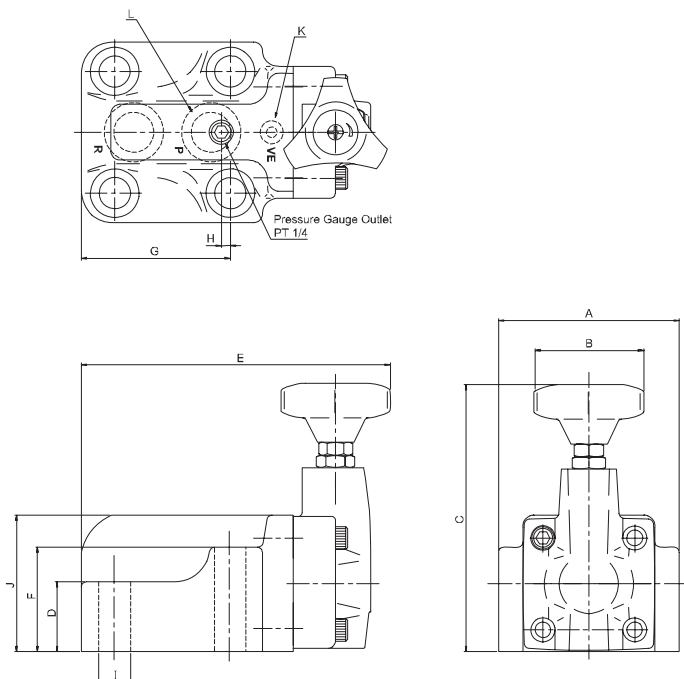
最低調整壓力及泄油壓力與流量曲線

A 泄油壓力 B 最低調整壓力



### ◆ DIMENSIONS 外型尺寸圖

#### RV-03G. 06G. 10G



MODEL	A	B	C	D	E	F	G	H	I	J
RV-03G	84(3.31")	58(2.28")	170(6.69")	57(2.24")	150(5.91")	77(3.03")	77(3.03")	21(0.83")	13(0.51")	-
RV-06G	105(4.13")	58(2.28")	170(6.69")	40(1.57")	178(7.01")	60(2.36")	86(3.39")	4.5(0.18")	18(0.71")	78(3.07")
RV-10G	127(5.0")	58(2.28")	170(6.69")	49(1.93")	210(8.27")	67(2.64")	110(4.33")	6(0.24")	22(0.87")	87(3.43")

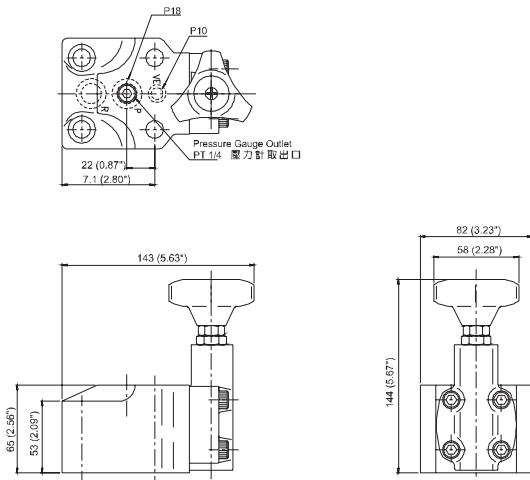
# PILOT OPERATED RELIEF VALVES

## RV SERIES

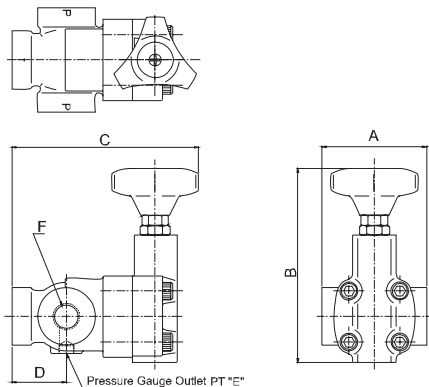
溢流閥

### ◆ DIMENSIONS 外型尺寸圖

#### RV-04G



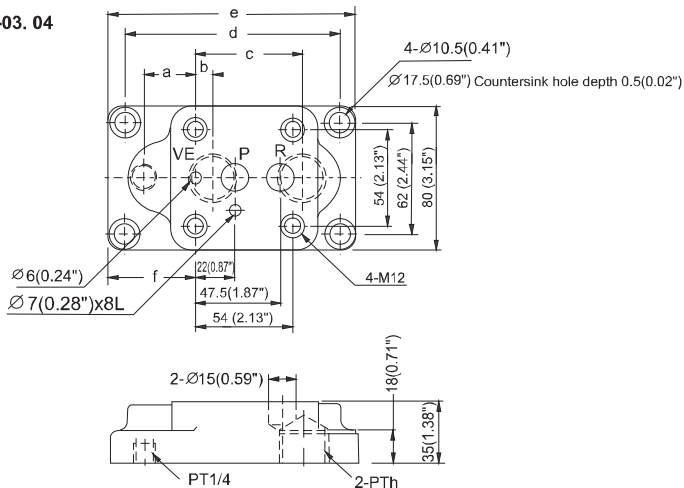
#### RV-04T. 06T-30



MODEL	A	B	C	D	E	F
RV-04T	78(3.07")	156 (6.14")	135(5.31")	39(1.54")	PT1/4	PT1/2
RV-06T	138(5.43")	170 (6.69")	145(5.71")	52(2.05")	PT1/4	PT3/4

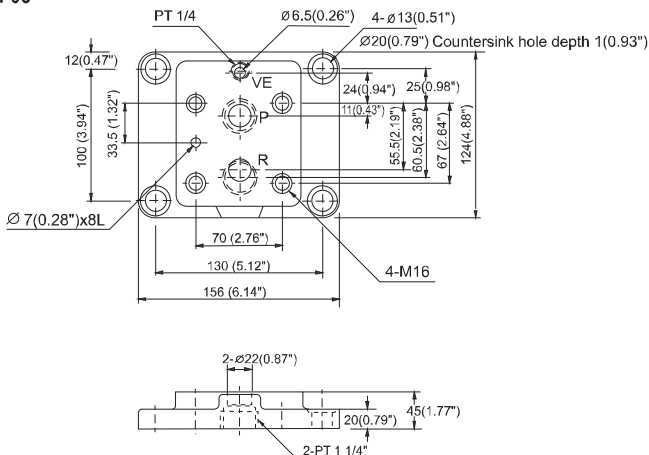
### ◆ Mounting Interface 基準尺寸圖

RVM-03\_04



### ◆ Mounting Interface 基準尺寸圖

RVM-06



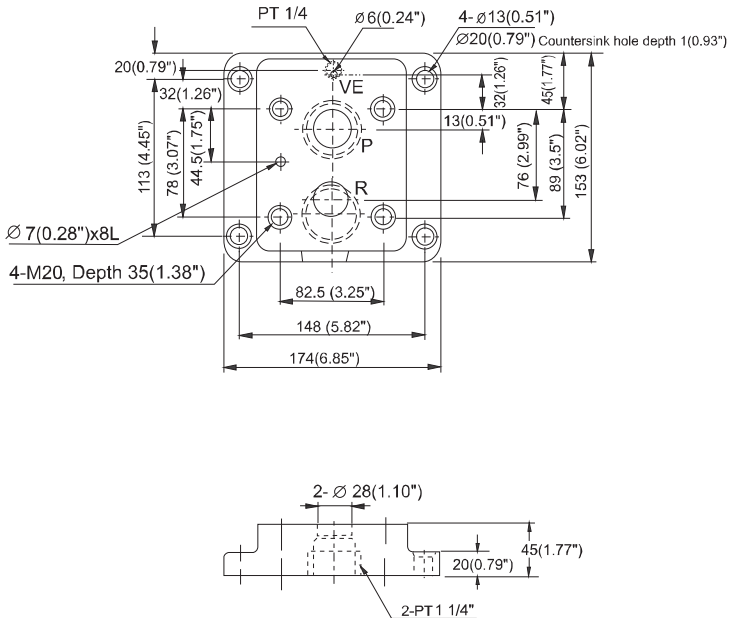
# PILOT OPERATED RELIEF VALVES

RV SERIES

溢流閥

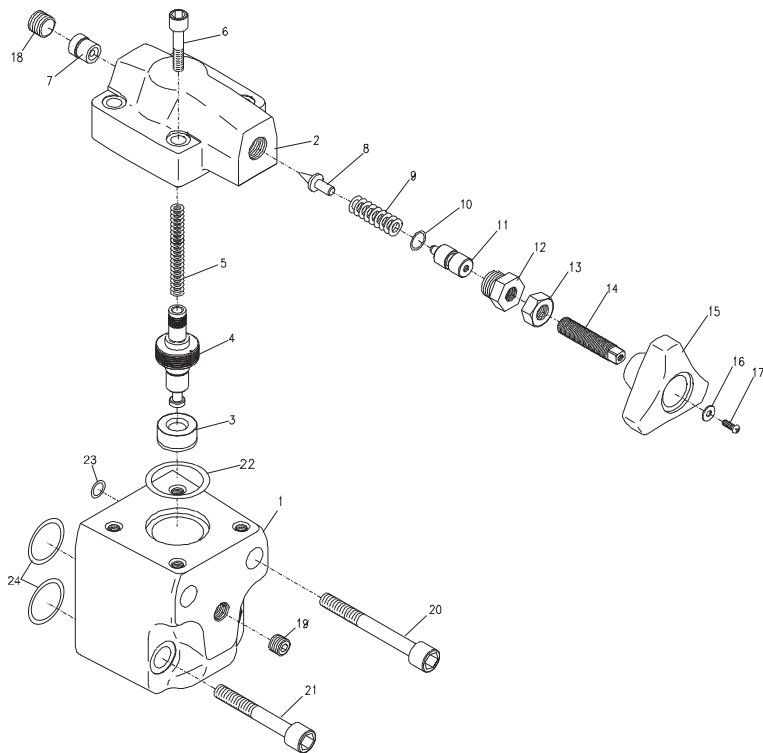
## ◆ Mounting Interface 基準尺寸圖

RVM-10



### ◆ EXPLODED VIEWS OF PARTS LIST 零件爆炸視圖

#### RV-03G. 06G. 10G



### ◆ ACCESSORIES 附屬配件

RV-03G			
NO	Description	Qty	Specification
10	O-ring	1	P9
20	HEX. COUNTER-SINK SCREW	2	M12 x 90L
21	HEX. COUNTER-SINK SCREW	2	M12 x 70L
22	O-ring	1	P31
23	O-ring	1	P10
24	O-ring	2	P18

RV-06G			
NO	Description	Qty	Specification
10	O-ring	1	P9
20	HEX. COUNTER-SINK SCREW	2	M16 x 75L
21	HEX. COUNTER-SINK SCREW	2	M16 x 55L
22	O-ring	1	P31
23	O-ring	1	P10
24	O-ring	2	P28

RV-10G			
NO	Description	Qty	Specification
10	O-ring	1	P9
20	HEX. COUNTER-SINK SCREW	2	M20 x 90L
21	HEX. COUNTER-SINK SCREW	2	M20 x 70L
22	O-ring	1	P42
23	O-ring	1	P10
24	O-ring	2	P40

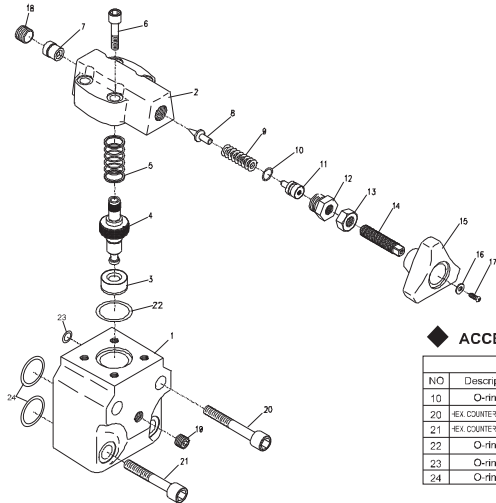
# PILOT OPERATED RELIEF VALVES

RV SERIES

溢流閥

## ◆ EXPLODED VIEWS OF PARTS LIST 零件爆炸視圖

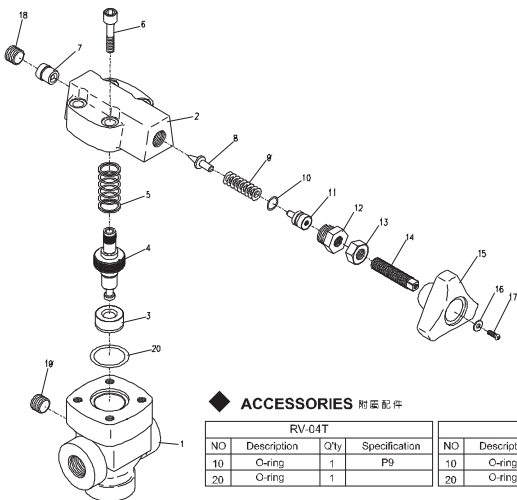
RV-04G



## ◆ ACCESSORIES 附屬配件

RV-04G			
NO	Description	Q'ty	Specification
10	O-ring	1	P9
20	HEX. COUNTER-SINK SCREW	2	M12 x 75L
21	HEX. COUNTER-SINK SCREW	2	M12 x 65L
22	O-ring	1	
23	O-ring	1	P10
24	O-ring	2	P18

RV-04T.06T



## ◆ ACCESSORIES 附屬配件

RV-04T				RV-06T			
NO	Description	Q'ty	Specification	NO	Description	Q'ty	Specification
10	O-ring	1	P9	10	O-ring	1	P9
20	O-ring	1		20	O-ring	1	P31