

THROTTLE & CHECK VALVES

TVC SERIES

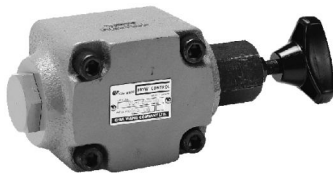
單向節流閥

◆ MODEL 型 式

TVC-06T



TVC-06G



◆ SPECIFICATIONS 規 格

| Model Number 型式號碼 | Maximum Pressure 最大壓力 bar | Connecting PT 適用管徑 | Quota Flow 定額流量 lpm | Weight 重量 Kg |
|-------------------------------|------------------------------|-----------------------|------------------------------|-----------------|
| TV*-03G | 250 (3625 psi) | 3/8" | 30 (7.93 gpm) | 1.3 (2.9 lbs) |
| TV*-03T | | | | 1.4 (3.1 lbs) |
| TV*-06G | | 3/4" | 80 (21.13 gpm) | 4.5 (9.9 lbs) |
| TV*-06T | | | | 3.8 (8.4 lbs) |
| TV*-10G | | 1-1/4" | 200 (52.84 gpm) | 8.6 (19.0 lbs) |
| TV*-10T | | | | 8 (17.6 lbs) |
| Fluid Type 液體型號 | | | ISO VG 32 , 46 , 68 | |
| Viscosity 黏性 cSt | | | 10~400 (59~1854 SSU) | |
| Operating Temperature 操作溫度 °C | | | -15~70 (-5~158°F) | |
| Contamination Level 污染標準 | | | ISO4406. 21/19/16 NAS1638,10 | |

● All screws with metric measure , if require inch measure , please contact us.

所有螺絲皆為公制標準規格，若需英制螺絲請另外備註說明。

◆ HOW TO ORDER 編號說明

| | | | | |
|----|---|----|---|----|
| 1 | 2 | 3 | 4 | 5 |
| TV | * | 06 | G | 30 |

1 VALVE SERIES 系列名稱

TV= Throttle & Check Valves

2 CHECK VALVE 止逆閥

C: Include Check Valve C: 附止逆閥

3 SUBPLATE MOUNTING SIZE: 稱呼口徑

03 = 3/8"(9mm) ISO CETOP5
DIN NG 10
NFPA D05

06= 3/4"(19mm) ISO CETOP8
DIN NG 25
NFPA D08

10 = 1 1/4"(31.8mm)
ISO CETOP10
DIN NG 32
NFPA D10

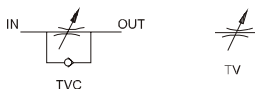
4 CONNECTING TYPE 連接型式

T:TYPE:THREADING TYPE (螺紋連接)

G:TYPE:BASEPLATE MOUNTING TYPE (板式連接)

5 DESIGN NO 設計編號

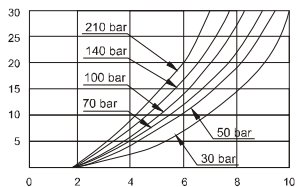
◆ CONTROL PORT(S) 動作形式



◆ PERFORMANCE 性能

Test Conditions 測試條件
 Oil Temperature 油溫: 50°C (122°F)
 Viscosity 黏度: 35 cSt (163 SSU)

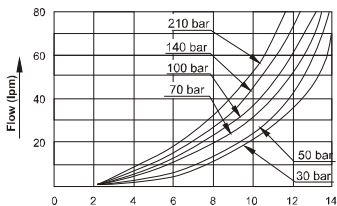
TV - 03



ADJUSTMENT KNOB SCALE

調節旋鈕位置(轉數)

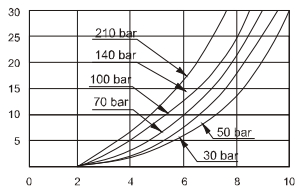
TV - 06



ADJUSTMENT KNOB SCALE

調節旋鈕位置(轉數)

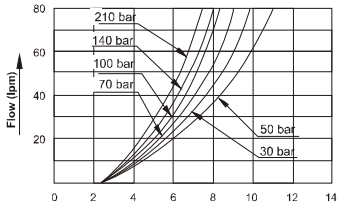
TVC - 03



ADJUSTMENT KNOB SCALE

調節旋鈕位置(轉數)

TVC - 06

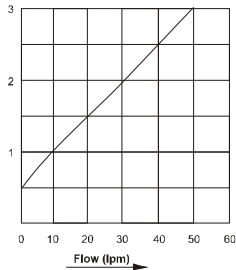


ADJUSTMENT KNOB SCALE

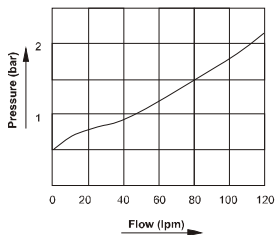
調節旋鈕位置(轉數)

Flow-Pressure Characteristic

TVC - 03



TVC - 06



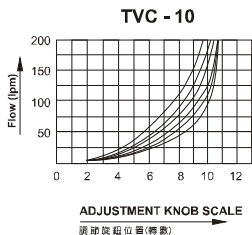
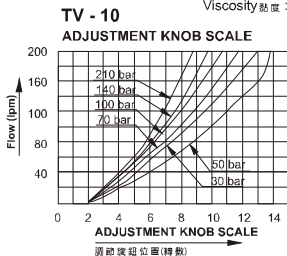
THROTTLE & CHECK VALVES

TVC SERIES

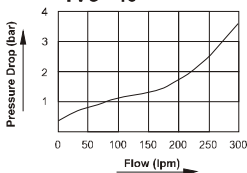
單向節流閥

◆ PERFORMANCE 性能

Test Conditions 測試條件
 Oil Temperature 油溫度: 50°C(122°F)
 Viscosity 黏度: 35 cSt (163 SSU)

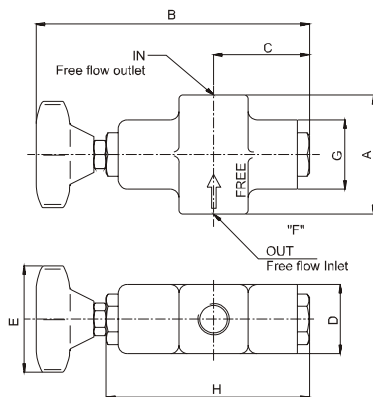
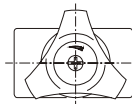


Flow-Pressure Characteristic TVC - 10



◆ DIMENSIONS 外型尺寸圖

TVC-03 . 06 . 10T



| MODEL 型 式 | A | B | C | D | E | F | G | H |
|--------------|------------|-------------|-----------|-----------|-----------|-------|-----------|------------|
| TVC-03T | 70(2.76") | 175(6.89") | 58(2.28") | 42(1.65") | 58(2.28") | PT3/8 | 42(1.65") | 120(4.72") |
| TVC-06T | 108(4.25") | 220(8.66") | 67(2.64") | 62(2.44") | 58(2.28") | PT3/4 | 57(2.24") | 162(6.38") |
| TVC-10T | 132(5.20") | 260(10.24") | 74(2.91") | 80(3.15") | 58(2.28") | PT1/4 | 74(2.91") | 188(7.40") |

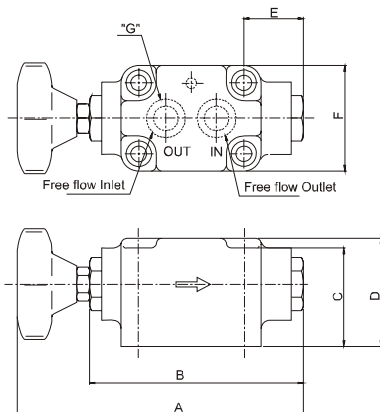
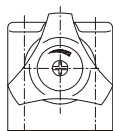
THROTTLE & CHECK VALVES

單向節流閥

TVC SERIES

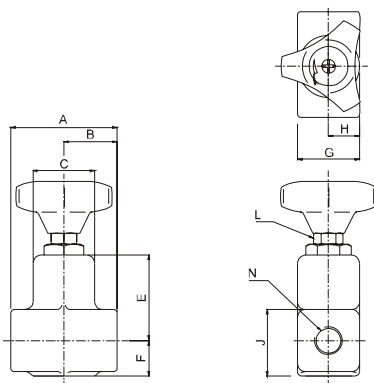
◆ DIMENSIONS 外型尺寸圖

TVC-03 . 06 . 10G



| MODEL 型 式 | A | B | C | D | E | F | G | SCREW |
|--------------|-------------|------------|-----------|-----------|-----------|------------|-----|-----------|
| TVC-03G | 180(7.09") | 120(4.72") | 38(1.50") | 47(1.85") | 12(0.47") | 5.9(2.32") | P18 | M8 x 65L |
| TVC-06G | 222(8.74") | 162(6.38") | 65(2.56") | 75(2.95") | 34(1.34") | 82(3.23") | P28 | M8 x 75L |
| TVC-10G | 265(10.43") | 190(7.48") | 82(3.23") | 95(3.74") | 32(1.26") | 100(3.94") | P36 | M12 x 95L |

TV-03 . 06 . 10T



| MODEL 型 式 | A | B | C | D | E | F | G | H | J | K | L | N |
|--------------|------------|-----------|-----------|----|-----------|-----------|-----------|-----------|-----------|----|-----------|-------|
| TV-03T | 70(2.76") | 35(1.38") | 40(1.57") | -- | 54(2.13") | 23(0.91") | 42(1.65") | 20(0.79") | 40(1.57") | -- | 19(7.48") | 3/8 |
| TV-06T | 100(3.94") | 50(1.97") | 40(1.57") | -- | 62(2.44") | 30(1.18") | 62(2.44") | 30(1.18") | 60(2.36") | -- | 19(7.48") | 3/4 |
| TV-10T | 130(5.12") | 65(2.56") | 56(2.20") | -- | 73(2.87") | 40(1.57") | 82(3.23") | 40(1.57") | 80(3.15") | -- | 22(8.66") | 1 1/4 |

F
TVC

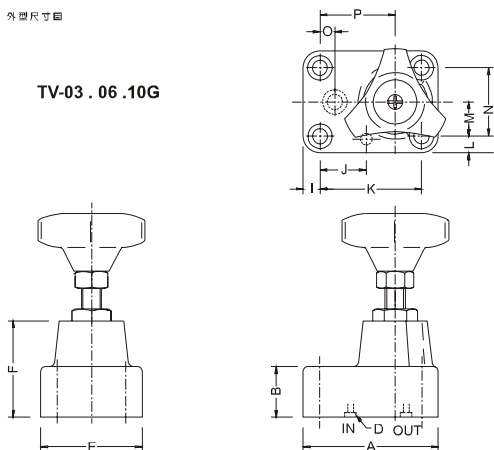
THROTTLE & CHECK VALVES

TVC SERIES

单向节流阀

◆ DIMENSIONS 外型尺寸圖

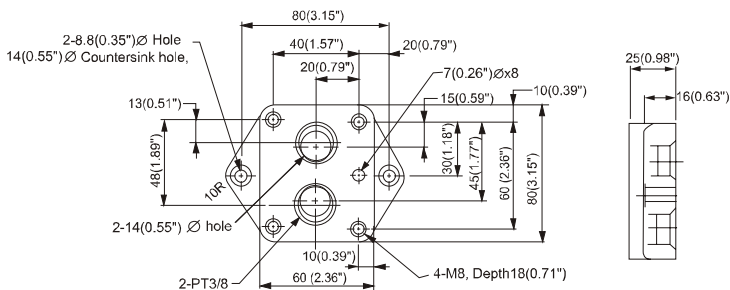
TV-03 . 06 . 10G



| MODEL 型号 | A | B | C | D | E | F | G | H | I | J | K | L | M | N | O | P |
|-------------|------------|-----------|----|-----|------------|-----------|----|----|-----------|-----------|-----------|-----------|-----------|-----------|-----------|-----------|
| TV-03G | 80(3.15") | 30(1.18") | -- | P16 | 60(2.36") | 61(2.40") | -- | -- | 10(0.39") | 30(1.18") | 60(2.36") | 10(0.39") | 20(0.79") | 40(1.57") | 15(0.59") | 45(1.77") |
| TV-06G | 92(3.62") | 42(1.65") | -- | P26 | 80(3.15") | 73(2.87") | -- | -- | 11(0.43") | 35(1.38") | 70(2.76") | 11(0.43") | 29(1.14") | 58(2.28") | 18(0.63") | 54(2.12") |
| TV-10G | 120(4.72") | 55(2.17") | -- | P36 | 100(3.94") | 93(3.68") | -- | -- | 14(0.55") | 46(1.81") | 92(3.62") | 14(0.55") | 36(1.42") | 72(2.83") | 21(0.83") | 71(2.79") |

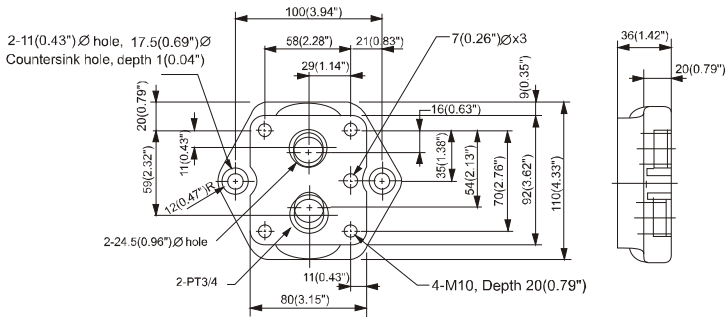
◆ DIMENSIONS FOR BASEPLATE 基座尺寸圖

TVCM TVM-03



◆ DIMENSIONS FOR BASEPLATE 基礎尺寸圖

TVCM TVM-06



TVCM TVM-10

