

# LOW NOISE TYPE PILOT OPERATED RELIEF VALVES

低噪音溢流閥

DB SERIES

## ◆ MODEL 型 式

DB-06G



## ◆ FEATURES

- DB series products feature their high working pressure, big flow and fast reactive speed.
- Casting iron bodies are provided strength and durability for longer life.
- Internal hardened steel components also provide durable life.

- 特 點
- DB系列產品有工作壓力高、大流量反應速度快等特點。
- 鑄本體强度高堅韌且持久性、壽命長。
- 內部硬鋼底件提高產品壽命。

## ◆ SPECIFICATIONS 規 格

Model Number 型式號碼	Maximum Pressure 最大壓力 bar	Connecting PT 適用管徑	Maximum Flow 最大流量 lpm	Weight 重量 Kg
DB-03G	350 (5076 psi)	3/8"	250 (66.05 gpm)	3.4 (7.5 lbs)
DB-06G		3/4"	500 (132.09 gpm)	5 (11.0 lbs)
DB-10G		1 1/4"	650 (171.72 gpm)	5.9 (13.0 lbs)
Fluid Type 液體型式		ISO VG 32, 46, 68		
Viscosity 黏性 cSt		10~400 (59~1854 SSU)		
Operating Temperature 操作溫度 °C		-15~70 (-5~158 °F)		
Contamination Level 污染標準		ISO4406. 21/19/16 NAS1638,10		

- All screws with metric measure, if require inch measure, please contact us.  
 所有螺絲皆為公制標準規格至，若需英制螺絲請另外備註說明。

## ◆ HOW TO ORDER 編號說明

1	2	3	4	5
DB	03	G	*	30

### 1 VALVE SERIES 系列名稱

DB=Low Noise Type Pilot Operated Relief Valves

### 4 ADJUSTMENT PRESSURE 壓力調整範圍

1. \* ~100 bar
3. 12 ~ 350 bar

### 2 SUBPLATE MOUNTING SIZE: 銅母口徑

03 = 3/8"(9mm)	06 = 3/4"(19mm)
ISO CETOP5	ISO CETOP8
DIN NG 10	DIN NG 25
NFPA D05	NFPA D08

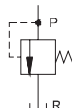
10 = 1 1/4"(31.8mm)  
 ISO CETOP10  
 DIN NG 32  
 NFPA D10

### 5 DESIGN NO 設計編號

### 3 CONNECTING TYPE 連接型式

G:TYPE:BASEPLATE MOUNTING TYPE (板式安裝)

## ◆ CONTROL PORT(S) 動作形式



F  
DB

# LOW NOISE TYPE PILOT OPERATED RELIEF VALVES

DB SERIES

低噪音溢流閥

## ◆ PERFORMANCE 性能

Test Conditions 測試條件

Oil Temperature 油溫度: 50°C (122°F)

Viscosity 黏度: 35 cSt (163 SSU)

Operating curves (measured at  $v=41\text{mm/s}$  and  $t=50\text{C}$ )

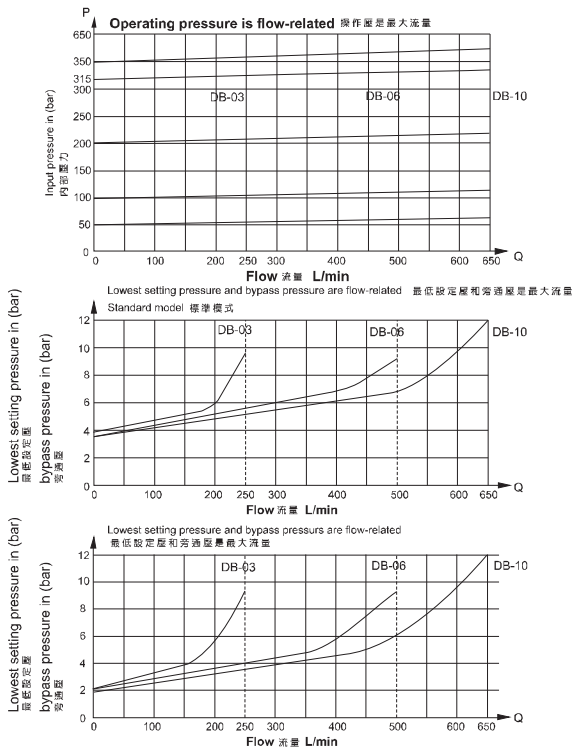
The curves were plotted with external pilot oil drain at zero pressure.

With internal pilot oil return add the pressure at port B to the values shown.

操作曲線(設定 為 $41\text{mm/s}$  溫度 $50\text{C}$ )

由線設定外導排油壓力為零

包含內導回油和B口壓力值如圖上所示



The operating curves are valid with outlet pressure  $P_B=0$  for the whole flow range  
操作壓的有數值是外口壓力  $P_B=0$  對整個流量值

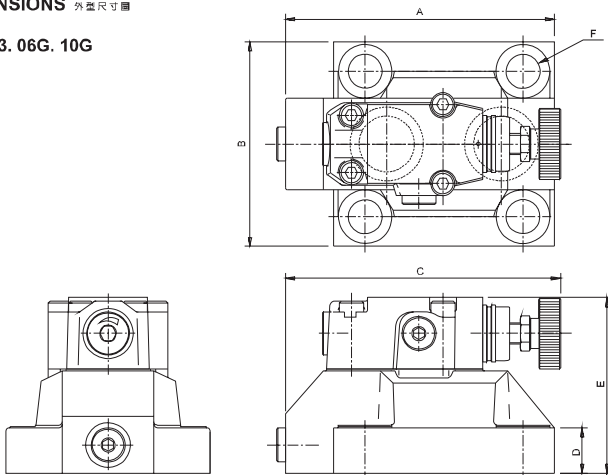
# LOW NOISE TYPE PILOT OPERATED RELIEF VALVES

低噪音溢流閥

DB SERIES

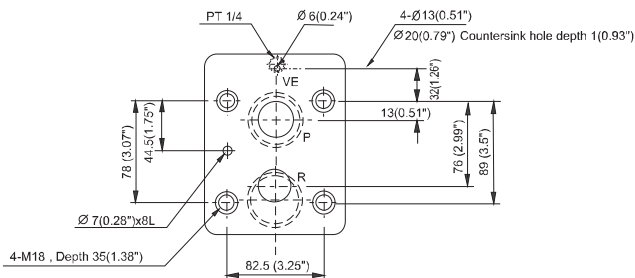
## ◆ DIMENSIONS 外型尺寸圖

DB-03. 06G. 10G



MODEL	A	B	C	D	E	F
DB-03	91 (3.58")	78 (3.07")	135 (5.31")	26 (1.02")	98 (3.86")	14(0.55")
DB-06	116 (4.57")	100 (3.94")	144 (5.67")	26 (1.02")	98 (3.86")	18(0.71")
DB-10	148 (5.83")	115 (4.53")	154 (6.06")	26 (1.02")	98 (3.86")	20(0.79")

## DBM-10



- The install size of DB-03. 06 valve please refer the base seat drawing of type RVM-03. 06  
 (註) DB-03. 06 閥安裝圖尺寸參見RVM-C3.06 型底座尺寸圖

**F**  
**DB**

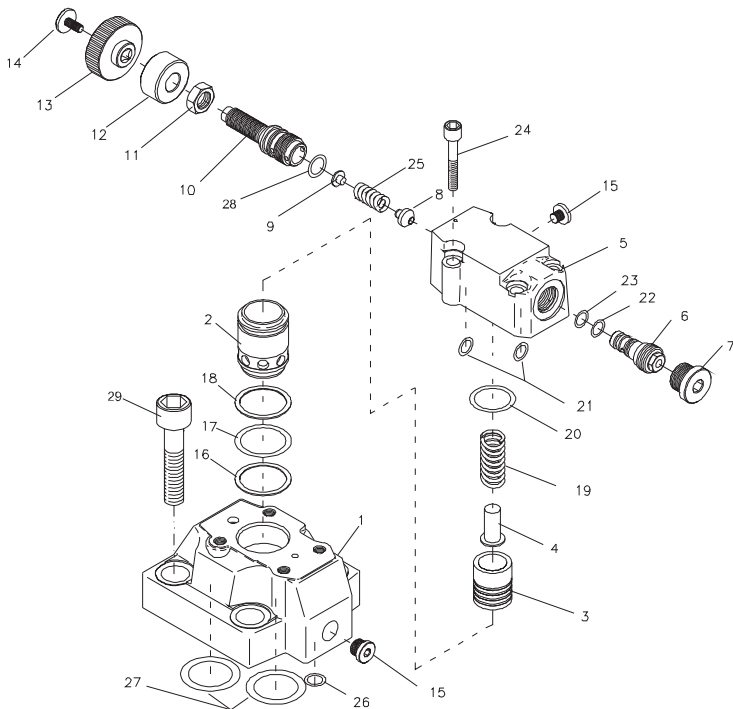
# LOW NOISE TYPE PILOT OPERATED RELIEF VALVES

DB SERIES

低噪音溢流閥

## ◆ EXPLODED VIEWS OF PARTS LIST 零件爆炸視圖

DB-03. 06G. 10G



### ◆ ACCESSORIES 附屬配件

DB-03G			
NO	Description	Q'ty	Specification
17	O-ring	1	S29
18	O-ring	1	S24
20	O-ring	1	
21	O-ring	1	P9
22	O-ring	1	P9
23	O-ring	1	P8
26	O-ring	1	P10
27	O-ring	2	P18
28	O-ring	1	S018
29	HEX COUNTER-SINK SCREW	4	M12 x 40L

### ◆ ACCESSORIES 附屬配件

DB-06G			
NO	Description	Q'ty	Specification
17	O-ring	1	S29
18	O-ring	1	S24
20	O-ring	1	
21	O-ring	1	P9
22	O-ring	1	P9
23	O-ring	1	P8
26	O-ring	1	P10
27	O-ring	2	P28
28	O-ring	1	S018
29	HEX COUNTER-SINK SCREW	4	M16 x 40L

### ◆ ACCESSORIES 附屬配件

DB-10G			
NO	Description	Q'ty	Specification
17	O-ring	1	S29
18	O-ring	1	S24
20	O-ring	1	
21	O-ring	1	P9
22	O-ring	1	P9
23	O-ring	1	P8
26	O-ring	1	P10
27	O-ring	2	P40
28	O-ring	1	S018
29	HEX COUNTER-SINK SCREW	4	M18 x 40L