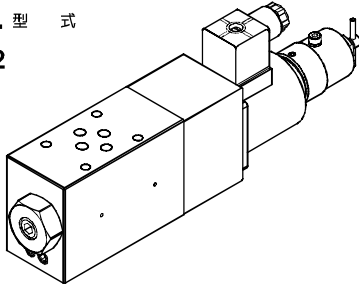


# MODULAR TYPE ELECTRO-HYDRAULIC PROPORTIONAL REDUCING VALVES

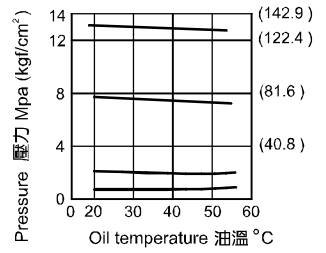
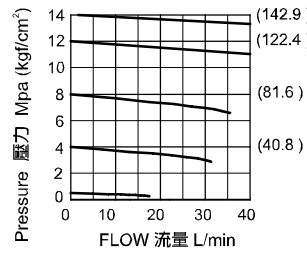
基層型電磁比例減壓閥

EMBR SERIES

## ◆ MODEL 型式 EMBR-02



## ◆ PERFORMANCE 特性曲線



## ◆ HANDING DESCRIPTION 使用說明

### 1. Air Bleeding 排出空氣

To enable proper pressure control, loosen the air vent starting up the pump in order to bleed any air from the pump, and fill the inside of the solenoid with hydraulic operating fluid. 要進行良好的壓力控制, 初次使用時, 轉排氣孔充分排出空氣, 並使電磁閥內充滿液壓油。

### 2. Manual Pressure Adjusting Screw 手動壓力調整螺柱

For the initial adjustment or when there is no input current to the valve due to an electrical problem or some other reason, value pressure can be increased by rotating the manual adjustment screw clockwise (rightward). Normally, the manual adjusting screw should be rotated back fully to the left (counterclockwise) and secured with the lock nut.

初期調整或因電器故障等原因閥中無輸入電流時, 通過手動調整螺柱向右轉動可以使壓力上升。平時必須把手動調整螺柱全部轉回原位置, 並鎖緊螺母。

### 3. Minimum Control Pressure 最低控制壓力

Since this valve has an internal drain system, T port back pressure has an effect on minimum control pressure. 由於是內部洩油方式, 所以最低控制壓力受T口背壓的影響。

## ◆ SPECIFICATIONS 規格

Model Number 型式號碼	Maximum Pressure 最大壓力 bar	T Part Allowable back Pressure T口容許背壓 bar	Maximum Flow 最大流量 lpm	Rated Current 額定電流 mA	Coil Resistance 線圈阻抗 Ω	Hysteresis 磁滯性 %	Voltage 電壓 VDC
EMBR-02	250(3625 psi)	25(362 psi) max. 以下	30 ( 7.93 gpm)	850	20 (20° C)	3 max. 以下	24
Fluid Type 流體型式				ISO VG 32, 46, 68			
Viscosity 黏性 cSt				10~400 (59~1854 SSU)			
Operating Temperature 操作溫度 °C				-15~70 (-5~158 °F)			
Contamination Level 污染標準				ISO4406. 21/19/16 NAS1638,10			

### ◆ All screws with metric measure, if require inch measure, please contact us.

所附螺絲皆為公制標準規格品, 若需英制螺絲請另外備註說明。

## ◆ HOW TO ORDER 編號說明

1	2	3	4
EMBR	— 02 —	P	*

### 1 VALVE SERIES 系列名稱

EMBR = Modular Type Electro-hydraulic Proportional Reducing Valves 基層型電磁比例減壓閥

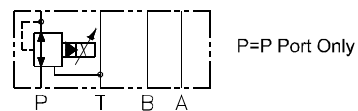
### 2 SUBPLATE MOUNTING SIZE: 稱呼口徑

02 = 1/4"(6mm)  
ISO CETOP3  
DIN NG 6  
NFPA D03

## ◆ WEIGHT 重量

3.8 Kg (8.4 lbs)

### 3 CONTROL PORT(S) 動作形式



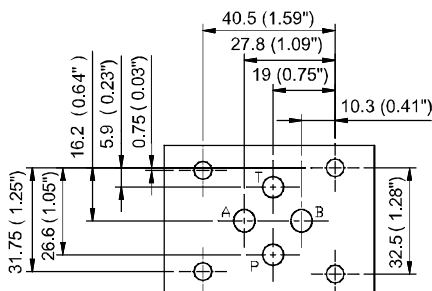
### 4 ADJUSTMENT PRESSURE 壓力調整範圍

1: 4 ~ 70 (bar)    2: 6 ~ 140 (bar)

## ◆ Mounting Interface

基座尺寸圖

ISO 4401-AB-03-4-A



## ◆ DIMENSIONS 外型尺寸圖

外型尺寸圖

