

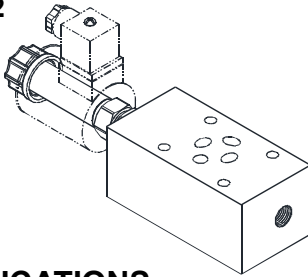
MODULAR TYPE ELECTRO-HYDRAULIC PROPORTIONAL REDUCING VALVES

EMGB SERIES

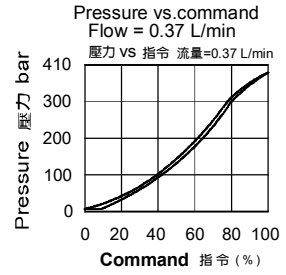
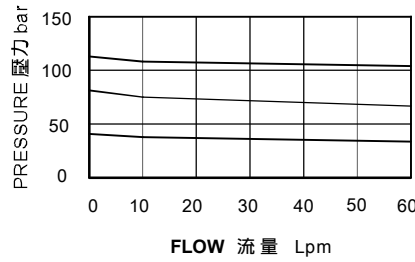
基層型電磁比例減壓閥

G
EMGB

◆ MODEL 型式 EMGB-02



◆ PERFORMANCE 特性曲線



◆ SPECIFICATIONS 規格

Model Number 型式號碼	Maximum Pressure 最大壓力 bar	Maximum Flow 最大流量 lpm	Rated Current 額定電流 mA	Voltage 電壓 VDC	Weight 重量 Kg
EMGB-02	350 (5076psi)	40 (10.57 gpm)	1300±10%	12	1.8(3.97 lbs)
			650±10%	24	
Fluid Type 流體型式			ISO VG 32, 46, 68		
Viscosity 黏性 cSt			10~400 (59~1854 SSU)		
Operating Temperature 操作溫度 °C			-15~70 (-5~158 °F)		
Contamination Level 污染標準			ISO4406. 21/19/16 NAS1638,10		

- All screws with metric measure, if require inch measure, please contact us.
所附螺絲皆為公制標準規格品，若需英制螺絲請另外備註說明。

◆ HOW TO ORDER 編號說明

1	2	3	4	5
EMGB	02	P	*	*

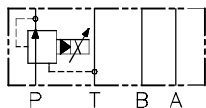
1 VALVE SERIES 系列名稱

EMGB = Modular Type Electro-hydraulic Proportional Reducing Valves
基層型電磁比例減壓閥

2 SUBPLATE MOUNTING SIZE: 稱呼口徑

02 = 1/4"(6mm)
ISO CETOP3
DIN NG 6
NFPA D03

3 CONTROL PORT(S) 動作形式



P=P Port Only

4 ADJUSTMENT PRESSURE 壓力調整範圍

Order 編號	Adjustment pressure 壓力調整範圍
1	4 ~ 50 (bar)
2	10 ~ 105 (bar)
3	20 ~ 210 (bar)
4	35 ~ 350 (bar)

5 TYPE OF COIL 線圈類型

Non : Without Coil 無記號:無線圈
D1 : DC12V
D2 : DC24V
Model number 型式編號 : COT08

- Coils must be ordered separately
線圈必須分開訂購

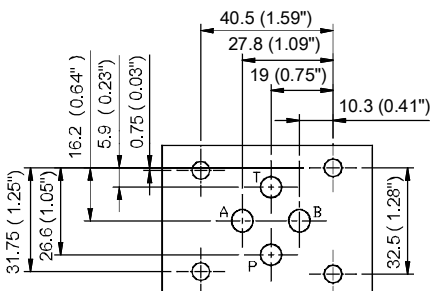
- The datasheet of proportional electric controller.
Please check AMP-V02 · AMP-V02B

比例電子控制器規格請參考編號 AMP-V02、AMP-V02B。

◆ Mounting Interface

基座尺寸圖

ISO 4401-AB-03-4-A



◆ DIMENSIONS

外型尺寸圖

