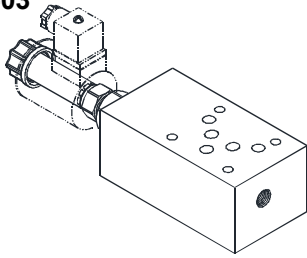


# MODULAR TYPE ELECTRO-HYDRAULIC PROPORTIONAL REDUCING VALVES

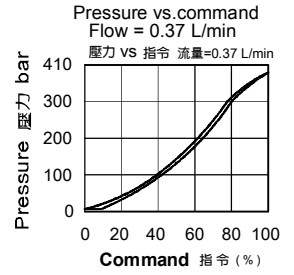
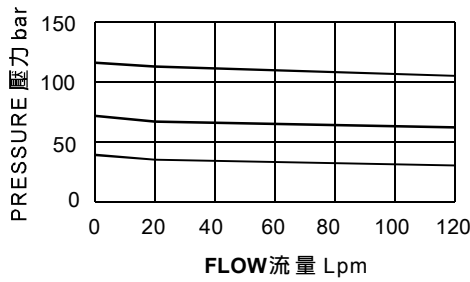
基層型電磁比例減壓閥

EMGB SERIES

## ◆ MODEL 型式 EMGB-03



## ◆ PERFORMANCE 特性曲線

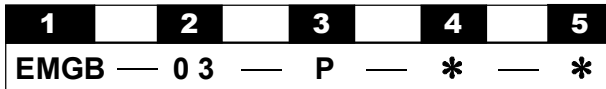


## ◆ SPECIFICATIONS 規格

| Model Number<br>型式號碼          | Maximum Pressure<br>最大壓力 bar | Maximum Flow<br>最大流量 lpm | Rated Current<br>額定電流 mA     | Voltage<br>電壓 VDC | Weight<br>重量 Kg |
|-------------------------------|------------------------------|--------------------------|------------------------------|-------------------|-----------------|
| EMGB-03                       | 350 (5076psi)                | 80 (21.13 gpm)           | 1300±10%                     | 12                | 4.4(9.70 lbs)   |
|                               |                              |                          | 650±10%                      | 24                |                 |
| Fluid Type 流體型式               |                              |                          | ISO VG 32, 46, 68            |                   |                 |
| Viscosity 黏性 cSt              |                              |                          | 10~400 (59~1854 SSU)         |                   |                 |
| Operating Temperature 操作溫度 °C |                              |                          | -15~70 (-5~158 °F)           |                   |                 |
| Contamination Level 污染標準      |                              |                          | ISO4406. 21/19/16 NAS1638,10 |                   |                 |

● All screws with metric measure, if require inch measure, please contact us.  
所附螺絲皆為公制標準規格品，若需英制螺絲請另外備註說明。

## ◆ HOW TO ORDER 編號說明



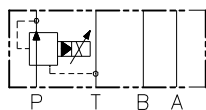
### 1 VALVE SERIES 系列名稱

EMGB = Modular Type Electro-hydraulic Proportional Reducing Valves  
基層型電磁比例減壓閥

### 2 SUBPLATE MOUNTING SIZE: 稱呼口徑

03 = 3/8"(9mm)  
ISO CETOP5  
DIN NG 10  
NFPA D05

### 3 CONTROL PORT(S) 動作形式



P=P Port Only

### 4 ADJUSTMENT PRESSURE 壓力調整範圍

| Order<br>編號 | Adjustment pressure<br>壓力調整範圍 |
|-------------|-------------------------------|
| 1           | 4 ~ 50 (bar)                  |
| 2           | 10 ~ 105 (bar)                |
| 3           | 20 ~ 210 (bar)                |
| 4           | 35 ~ 350 (bar)                |

### 5 TYPE OF COIL 線圈類型

Non : Without Coil 無記號:無線圈

D1 : DC12V

D2 : DC24V

Model number 型式編號 : COT08

● Coils must be ordered separately  
線圈必須分開訂購

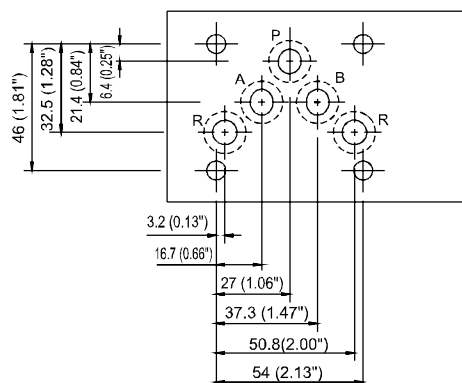
● The datasheet of proportional electric controller.  
Please check AMP-V02 · AMP-V02B

比例電子控制器規格請參考編號 AMP-V02 · AMP-V02B.

## ◆ Mounting Interface

基座尺寸圖

ISO 4401-AC-05-4-A



## ◆ DIMENSIONS

外型尺寸圖

