

BACK VALVES

RVC SERIES 背壓閥

◆ MODEL 型 式

RVC-06G



◆ SPECIFICATIONS 規 格

Model Number 型式號碼	Maximum Pressure 最大壓力 bar	Connecting PT 適用管徑	Maximum Flow 最大流量 lpm	Weight 重量 Kg
RVC-03G	315 (4500 psi)	3/8"	90 (23.78 gpm)	7 (15.4 lbs)
RVC-06G		3/4"	200 (52.84 gpm)	11.2 (24.7 lbs)
RVC-10G		1-1/4"	400 (105.678 gpm)	18.6 (41.0 lbs)
Fluid Type 液體型式			ISO VG 32, 46, 68	
Viscosity 黏性 cSt			10-400 (59-1854 SSU)	
Operating Temperature 操作溫度 °C			-15~70 (-5~158 °F)	
Contamination Level 污染標準			ISO4406. 21/19/16 NAS1638.10	

◆ All screws with metric measure, if require inch measure, please contact us.

所附螺絲皆為公制標準規格品，若需英制螺絲請另外備註說明。

◆ HOW TO ORDER 編號說明

1	2	3	4	5
RVC	06	G	3	30

1 VALVE SERIES 系列名稱

RVC= Back Valves

2 SUBPLATE MOUNTING SIZE: 稱呼口徑

03 = 3/8"(9mm) 06= 3/4"(19mm)
 ISO CETOP5 ISO CETOP8
 DIN NG 10 DIN NG 25
 NFPA D05 NFPA D08

10 = 1 1/4"(31.8mm)
 ISO CETOP10
 DIN NG 32
 NFPA D10

3 CONNECTING TYPE 連接型式

G:TYPE:BASEPLATE MOUNTING TYPE (板式連接)

4 PRESSURE ADJUSTMENT 壓力調整範圍

1. ★ - 70 bar 2. 8 - 140 bar 3. 8 - 250 bar

5 DESIGN NO 設計編號

◆ ACCESSORIES 附屬配件

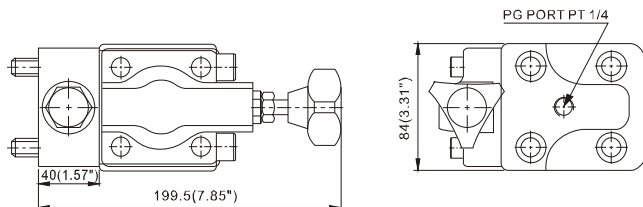
MODEL 型 式	SOCHOL CAP SCREW 安裝螺絲 (HEX COUNTER-SINK SCREW) 螺絲內六角螺絲	
RVC-03G	M12 x110L	2
	M12 x135L	2
	M16 x120L	2
RVC-06G	M16 x140L	2
	M20 x145L	2
RVC-10G	M20 x165L	2

◆ CONTROL PORT(S) 動作形式

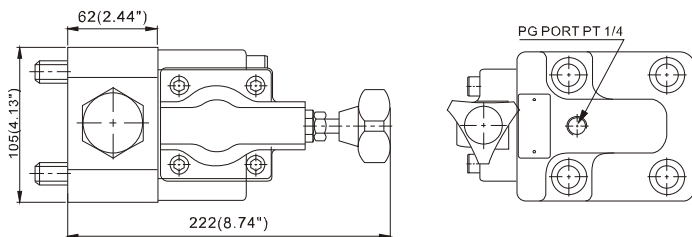


◆ DIMENSIONS 外型尺寸圖

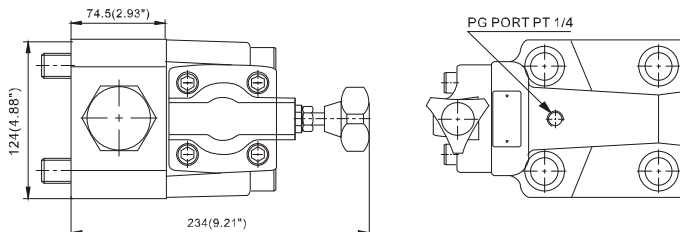
RVC-03G



RVC-06G



RVC-10G



● The install size of valve please refer the base seat drawing of type RVM-03 . 06 . 10

(註) 圖安裝兩尺寸參見RVM-03 . 06 . 10型底板尺寸圖