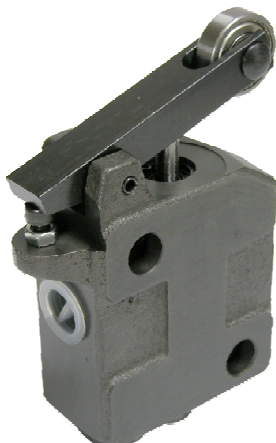


### ◆ MODEL 型 式

ZTC-04T



- These valves are used as cam controlled unidirectional flow regulators.
- Normally mounted in line between actuator and directional valve for the displacement of carriages or slides, they enable cam controlled acceleration or deceleration of the moving mass.
- A special internal check valve allows free flow the opposite direction.

- 減速閥由凸輪控制。
- 通常管是安裝在液壓缸和換向閥之間，用來控制滑座的位置，用凸輪控制運動部件的加速和減速。
- 特殊的內控單向閥允許油液反向流動。

### ◆ SPECIFICATIONS 規 格

Model Number 型式號碼	Maximum Pressure 最大壓力 bar	Flow 流量 lpm	Weight 重量 Kg
ZTC-04T	180 (2625psi)	40 (10.56 gpm)	2.8 (1.29 lbs)
Fluid Type 流體型式		ISO VG 32 , 46 , 68	
Viscosity 黏性 cSt		10~400 (59~1854 SSU)	
Operating Temperature 操作溫度 °C		-15~70 (-5~158° F)	
Contamination Level 污染標準		ISO4406. 21/19/16 NAS1638,10	

### ◆ HOW TO ORDER 編號說明

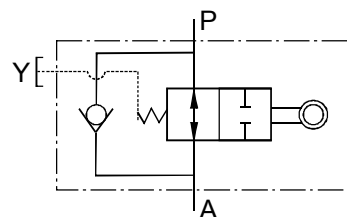
<b>1</b>	<b>2</b>	<b>3</b>
ZTC	— 04	T

**1 VALVE SERIES** 系列名稱  
ZTC = Deceleration Valve Series

**2 SUBPLATE MOUNTING SIZE:** 稱呼口徑  
04=1/2"(12mm) ISO CETOP7  
DIN NG 16 NFPA D07

**3 CONNECTING TYPE** 連接型式  
T:TYPE:THREADING TYPE  
(螺紋連接)  
T : Standard Type 標準品 (PT)  
B : BSP  
F : PF (G)  
N : NPT

### ◆ CONTROL PORT(S) 動作形式



### ◆ DIMENSIONS 外型尺寸圖

