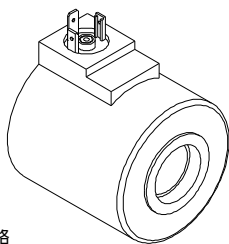
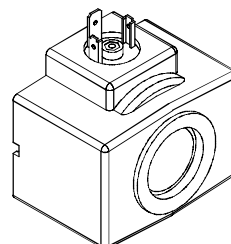


### ◆ MODEL 型式 COD03

DC



AC



### ◆ SPECIFICATIONS 規格

Model Number 型式號碼	VOLTAGE (V) 電壓			CURRENT & POWER AT RATED VOLTAGE 最大電壓的流量和電源功率	
	SOURCE RATED 最大值	HZ 頻率	RANGE 範圍	IN-RUSH CURRENT (A) 啟動電流	HOLDING CURRENT (A) 固定電流
COD03-A1 - *	AC110	50	90~110	4.79	0.86
		60	99~126	4.2	0.74
COD03-A115 - *	AC115	50	99~121	4.29	0.78
		60	108~138	3.99	0.7
COD03-A2 - *	AC220	50	180~220	2.31	0.42
		60	198~242	2.05	0.36
COD03-A230 - *	AC230	50	198~242	2.04	0.37
		60	216~276	1.88	0.33
COD03-R1 - *	RF110	50	99~126	0.47	0.47
		60			
COD03-R2 - *	RF220	50	198~253	0.24	0.24
		60			
COD03-D1 - *	DC12V	—	10.8~13.2		2.58
COD03-D2 - *	DC24V	—	21.6~26.4		1.33

● Above value based on temperature 30° C, electric voltage allowance 15 %. 以上數據基礎為溫度30,電壓容許度15 %。

● Coil - COD03 series application for WE-03 . 線圈 - COD03 系列適用於 WE-03 .

### ◆ HOW TO ORDER 編號說明

1	2	3	4
COD	03	A1	*

**1 VALVE SERIES** 系列名稱  
COD = COIL 線圈

**2 SUBPLATE MOUNTING SIZE** 稱呼口徑  
Size : 03

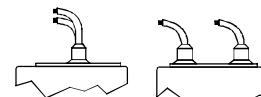
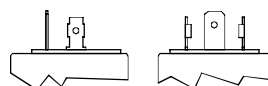
**3 TYPE OF COIL** 線圈類型

A1 : AC110V 60HZ	D1 : DC12V
A115 : AC115V 50HZ	D2 : DC24V
A230 : AC230V 50HZ	R1 : RF110V 60HZ/50HZ
A2 : AC220V 60HZ	R2 : RF220V 60HZ/50HZ
A24 : AC24V 50HZ/60HZ	

### 4 WIRING TYPE 接線型式

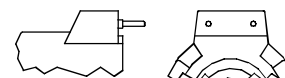
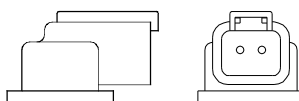
**H: WIRING BOX TYPE (DIN)**  
(DIN 43650-A / ISO4400)  
H: 接線盒式  
(DIN 43650-A / ISO4400)

**X: DOUBLE LEAD**  
X: 雙接線方式



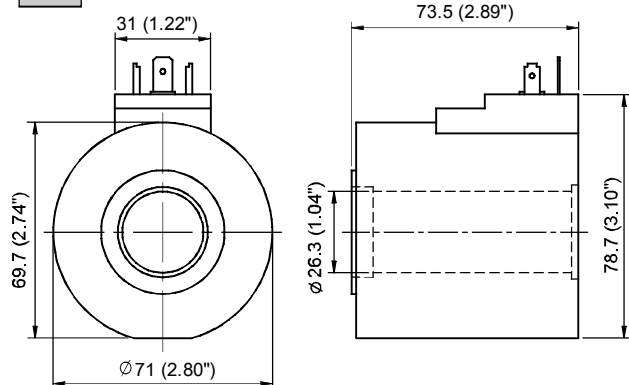
**D: DEUTSCH DT04-2P-V**

**E: CONCENTRATE WIRING BOX TYPE**  
E: 集中接線盒式



### ◆ DIMENSIONS 外型尺寸圖

DC



AC

