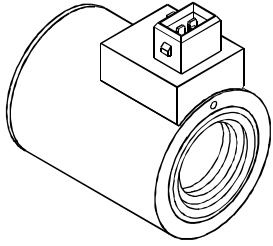


COIL

COS SERIES 線圈

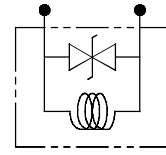
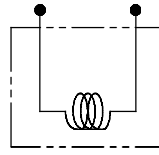
MODEL 型式 COS02



CONTROL PORT(S) 動作形式

Standard Type 標準型

TS Type TS型
(Only for DC 僅適用於DC)



SPECIFICATIONS 規格

Model Number 型式號碼	VOLTAGE (V) 電壓			CURRENT & POWER AT RATED VOLTAGE 最大電壓的流量和電源功率		
	SOURCE RATED 最大值	HZ 頻率	RANGE 範圍	IN-RUSH CURRENT (A) 啟動電流	HOLDING CURRENT (A) 固定電流	WATTAGE 瓦特數
COS02-D1-*	DC12V	—	10.8~13.2		2.5	30
COS02-D2-*	DC24V	—	21.6~26.4		1.25	30

● Above value based on temperature 30° C, electric voltage allowance 15%. 以上數據基礎為溫度30, 電壓容許度15%。

● Coil - COS02 series application for WE-02. 線圈 - COS02 系列適用於 WE-02.

HOW TO ORDER 編號說明

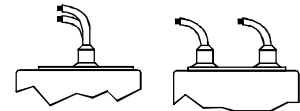
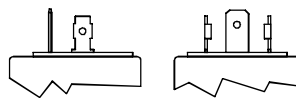
1	2	3	4	5
COS	02	— D1	— *	— *

4 WIRING TYPE 接線型式

H: WIRING BOX TYPE
(DIN 43650-A / ISO4400)

X: DOUBLE LEAD
X: 雙接線方式

H: 接線盒式 (DIN 43650-A / ISO4400)



1 VALVE SERIES 系列名稱

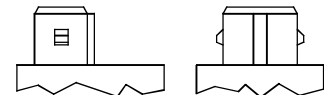
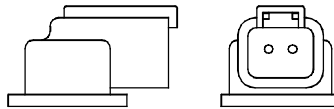
COS = COIL (IRON COVER IP65)
線圈(鐵製外殼 IP65)

2 SUBPLATE MOUNTING SIZE 稱呼口徑

02: =1/4"(6mm)
ISO CETOP3
DIN NG 6
NFPA D03

D: DEUTSCH DT04-2P-V

P: AMP JUNIOR
P: AMP 連接器



3 TYPE OF COIL 線圈類型

D1: DC12
D2: DC24

5 CONTROL PORT(S) 動作形式

Non: Standard 無記號: 標準型

TS: Transient Voltage-Suppression Diode (Only for DC) TS: 電壓抑制二極體 (僅適用於DC)

DIMENSIONS 外型尺寸圖

外型尺寸圖

