

# PRESSURE SWITCHES (MODULAR TYPE)

MPS SERIES

積層型壓力開關

## ◆ MODEL 型 式

MPS-02-B



## ◆ HOW TO ORDER 編號說明

1	2	3	4	5	6	7
MPS	— 02 —	P	1	— * —	* —	20

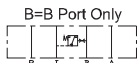
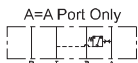
### 1 VALVE SERIES 系列名稱

MPS=Pressure Switches (Modular Type)

### 2 SUBPLATE MOUNTING SIZE: 稱呼口徑

02=1/4"(6mm)      03= 3/8"(9mm)  
 ISO CETOP3      ISO CETOP5  
 DIN NG 6      DIN NG 10  
 NFPA D03      NFPA D05

### 3 CONTROL PORT(S) 動作形式



### 4 ADJUSTMENT PRESSURE 壓力調整範圍

- 1: 5 ~ 60 (bar)
- 2: 10 ~ 125 (bar)
- 3: 25 ~ 275 (bar)

### 5 SHAPE 調整部形狀

NONE:TOOL ADJUST    基：二具調整式  
 K:HAND-BAR ADJUST    K：手桿調整式

### 6 ORIENTATION 調整部方向

L: L ORIENTATION    L：L方向  
 R: R ORIENTATION    R：R方向

### 7 DESIGN NO 設計編號

● All screws with metric measure, if require inch measure, please contact us.

所有螺絲皆為公制標準規格，若需英制螺絲請另外備註說明。

E  
MPS

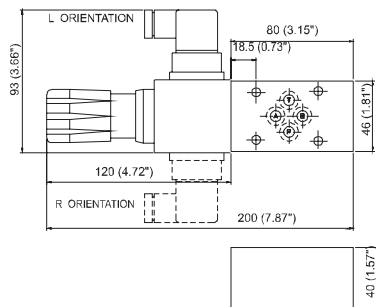
# PRESSURE SWITCHES (MODULAR TYPE)

積層型壓力開關

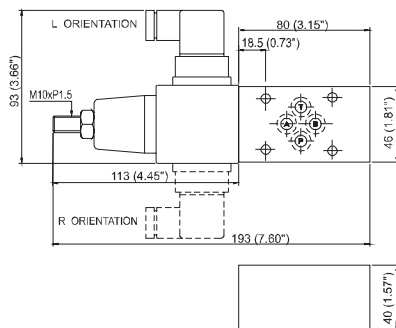
MPS SERIES

## ◆ DIMENSIONS 外型尺寸圖

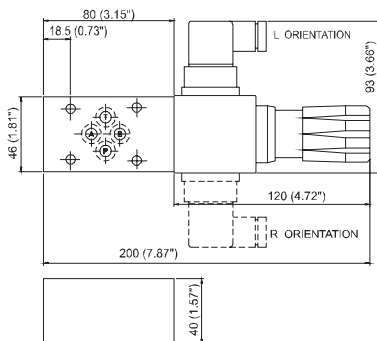
MPS-02-AK, PK



MPS-02-A, P



MPS-02-BK



**E**  
**MPS**

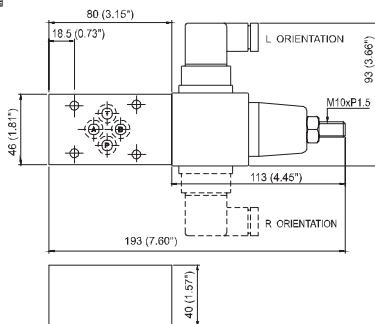
# PRESSURE SWITCHES (MODULAR TYPE)

MPS SERIES

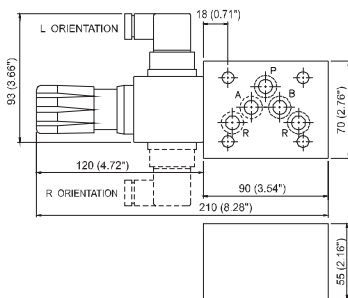
積層型壓力開關

## ◆ DIMENSIONS 外型尺寸圖

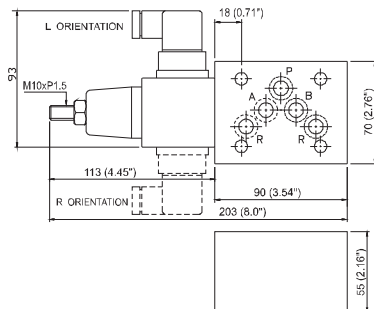
MPS-02-B



MPS-03-AK



MPS-03-A



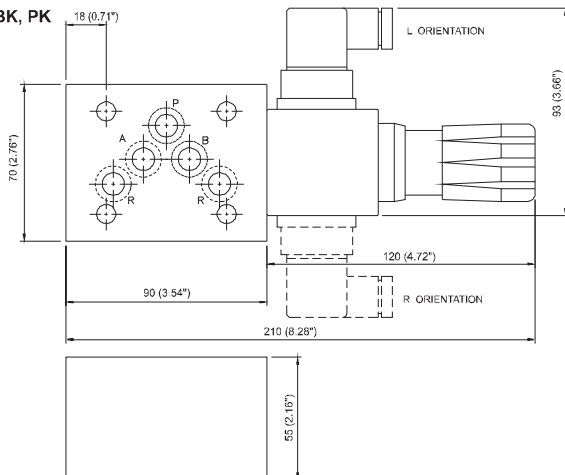
# PRESSURE SWITCHES (MODULAR TYPE)

積層型壓力開關

MPS SERIES

## ◆ DIMENSIONS 外型尺寸圖

MPS-03-BK, PK



MPS-03-B, P

