

ADJUSTABLE PRESSURE SWITCHES

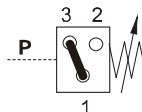
PS SERIES

PS 系列調整式壓力開關

◆ MODEL 型 式
PSI



◆ SYMBOL 液壓符號



◆ HOW TO ORDER 編號說明

1	2	3
PSI	70	1

1 VALVE SERIES 系列名稱

PSI= Pipe Connection & Hex key adjusted.

5 THREADED TYPE 螺紋規格

1: 1/4" PT 3: 1/4" SAE
2: 1/4" NPT 4: 1/4" BSP

2 ADJUSTMENT PRESSURE 壓力調整範圍

70 : 5 - 70 (bar)
150 : 10 - 150 (bar)
250 : 25 - 250 (bar)
400 : 30 - 400 (bar)

● All screws with metric measure , if require inch measure , please contact us.
所有螺絲皆為公制標準規格，若需英制螺絲請洽外貿組說明。

◆ DIMENSIONS 外型尺寸圖

