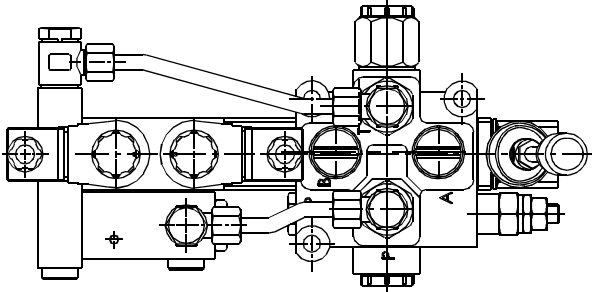


STACK VALVE

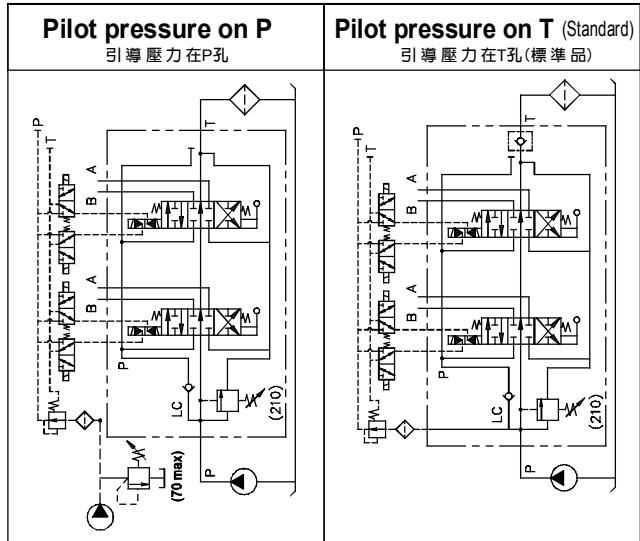
DMDS SERIES 多路換向閥系列

MODEL 型式

DMDS-04



CONTROL PORT(S) 動作形式



SPECIFICATIONS 規格

Model Number 型式號碼	Maximum Pressure 最大壓力 bar	Maximum Flow 最大流量 lpm	Weight 重量 Kg
DMDS-03-**-**	350 (5075 psi)	45 (11.9gpm)	*
DMDS-04-**-**	350 (5075 psi)	70 (18.5gpm)	*
DMDS-06-**-**	350 (5075 psi)	140 (36.98gpm)	*
DMDS-08-**-**	350 (5075 psi)	140 (36.98gpm)	*
Fluid Type 流體型式		ISO VG 32, 46, 68	
Viscosity 黏性 cSt		10~400 (59~1854 SSU)	
Operating Temperature 操作溫度 °C		-30~100 (-22~212°F)	
Contamination Level 污染標準		ISO4406. 21/19/16 NAS1638,10	

● Standard pressure of relief valve sets at 210 bar.
出廠壓力調節閥標準設定最大壓力210bar

※Any request of setting pressure at 350 bar, please inform CW in advance.
※For relief valves, please refer to VRV-03, VNE-60 series.
※如需設定壓力為350bar需先告知 ※調壓閥請參考VRV-03, VNE-60系列

HOW TO ORDER 編號說明

1	2	3	4	5	6	7	8	9
DMDS	04	C	2	1N	F*	I*	T	**

1 VALVE SERIES 系列名稱

DMDS = Pilot Solenoid Stack Valve
(Monoblock) 引導式電磁多路換向閥(單體式)

2 SUBPLATE MOUNTING SIZE 稱呼口徑

03 = G3/8" 04 = G1/2" 06 = G3/4"
08 = G1"

3 MODEL 型式

C: Spring Type 彈簧式

4 SPOOL TYPES 滑柱型式

See Page 053
見頁面053

5 NUMBER OF VALVE BLOCKS 連數

1N~7N = 1~7 Blocks

6 CONTROL PORT (FRONT COVER) 控制端(前蓋)

F* : Control Type 控制型式
See Page 058-059
見頁面058-059

None : Standard Type 無:標準型式

7 INLET SECTION 入油側

See Page 054
見頁面054

8 PILOT OPERATED WAY 引導壓力方式

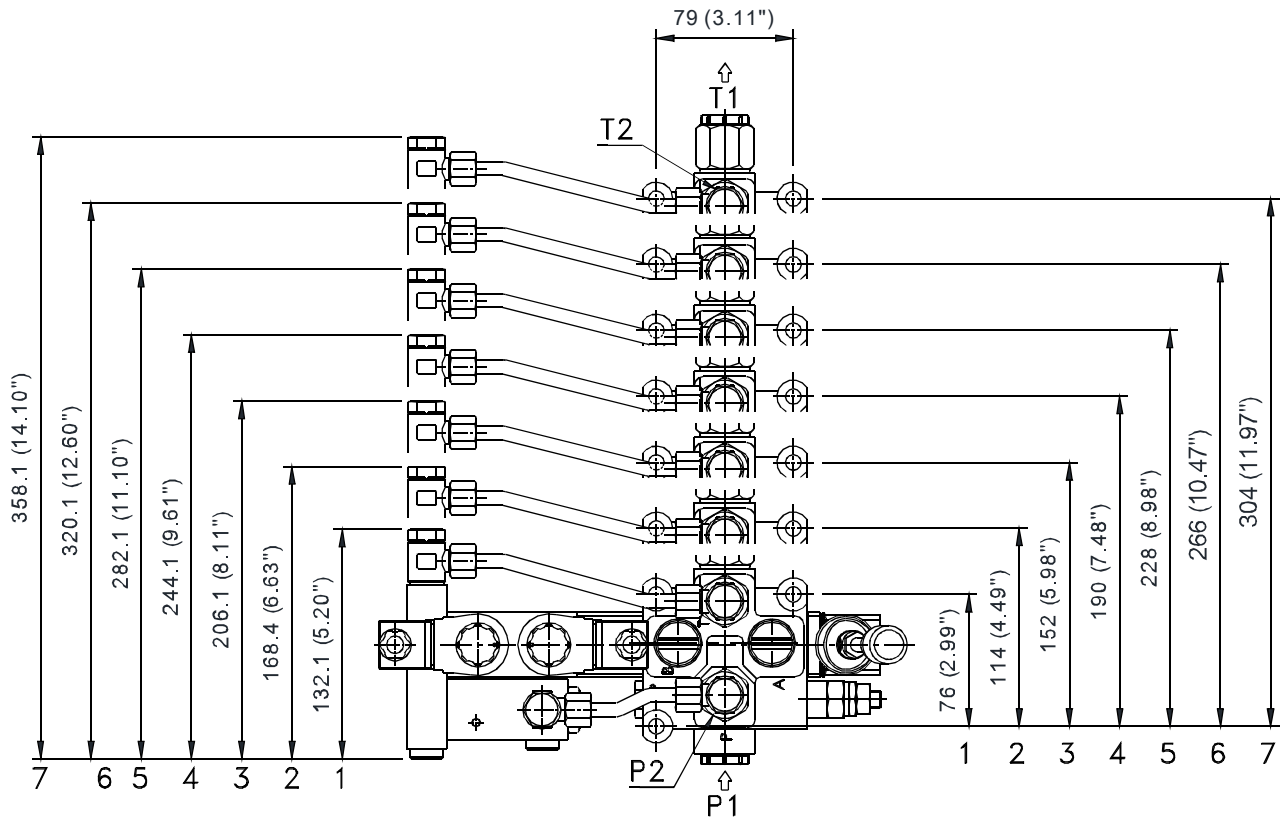
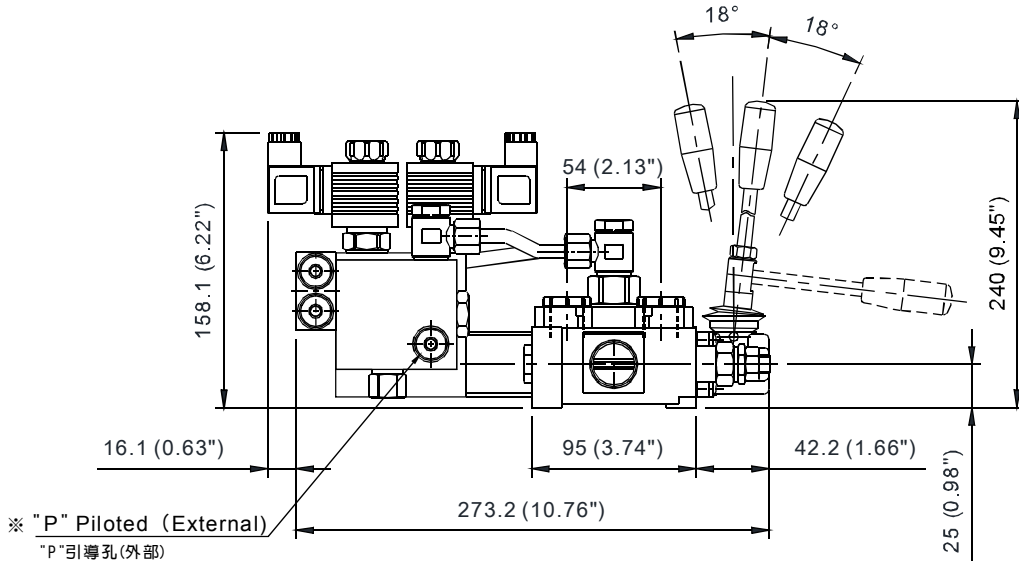
T : Pilot pressure on T (Standard) 引導壓力在T孔(標準品)
P : Pilot pressure on P (External) 引導壓力在P孔(外部)

9 TYPE OF COIL 電磁線圈類型

D1 : DC12V
D2 : DC24V

※If the products need to be assembled reversely, please advice CW in advance. The code of reverse is "L"
※產品需逆組裝請先告知佳王, 逆組裝代號為"L"。

◆ DIMENSIONS 外型尺寸圖



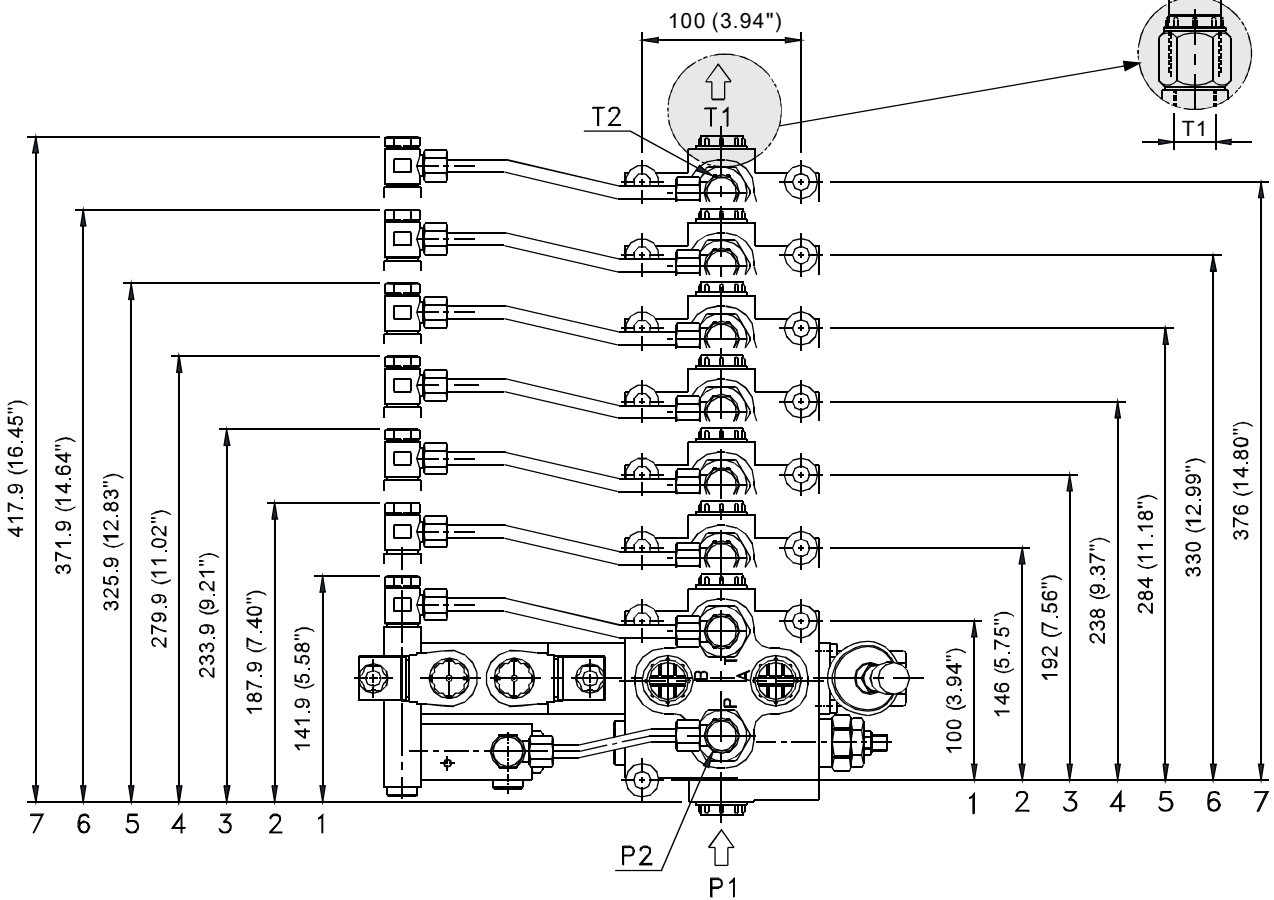
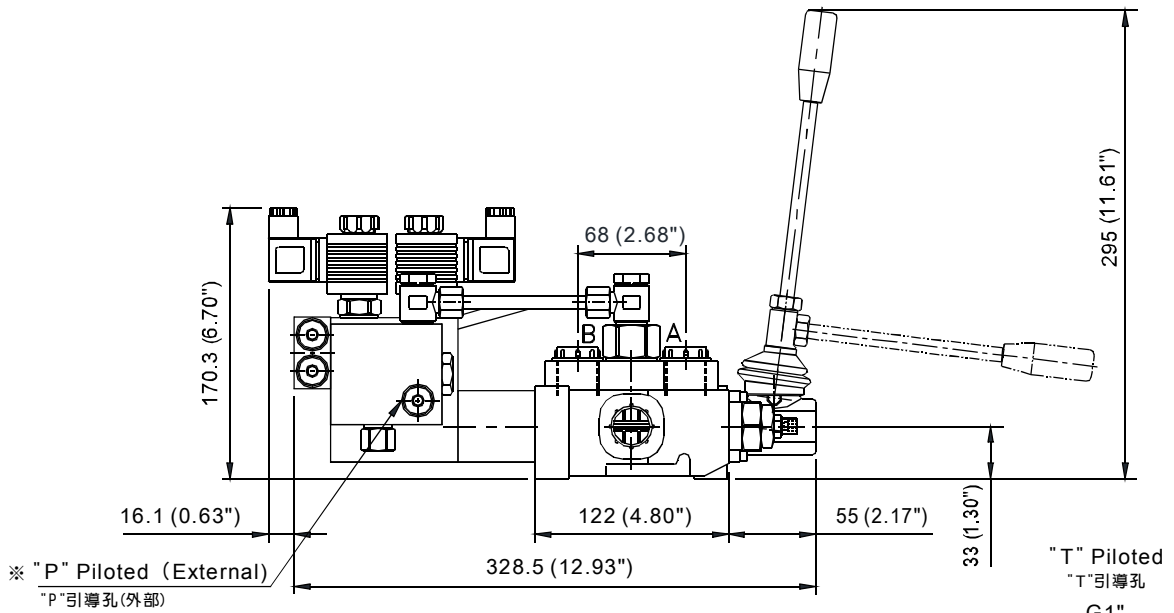
◆ AVAILABLE THREADS 通用螺紋

PORTS 閘口	P1	P2	A-B	T1	T2
DMDS-03-**-**	G 1/2"	G 3/8"	G 3/8"	G 1/2"	G 3/8"
DMDS-04-**-**	G 1/2"	G 1/2"	G 1/2"	G 1/2"	G 1/2"

STACK VALVE

DMDS SERIES 多路換向閥系列

◆ DIMENSIONS 外型尺寸圖 DMDS-06



◆ AVAILABLE THREADS 適用螺紋

PORTS 閥口	P1	P2	A-B	T1	T1 Piloted 引導孔	T2
DMDS-06-**-**	G 3/4"	G 3/4"	G 3/4"	G 3/4"	G 1"	G 3/4"
DMDS-08-**-**	G 1"	G 3/4"	G 3/4"	G 1"	G 1"	G 3/4"