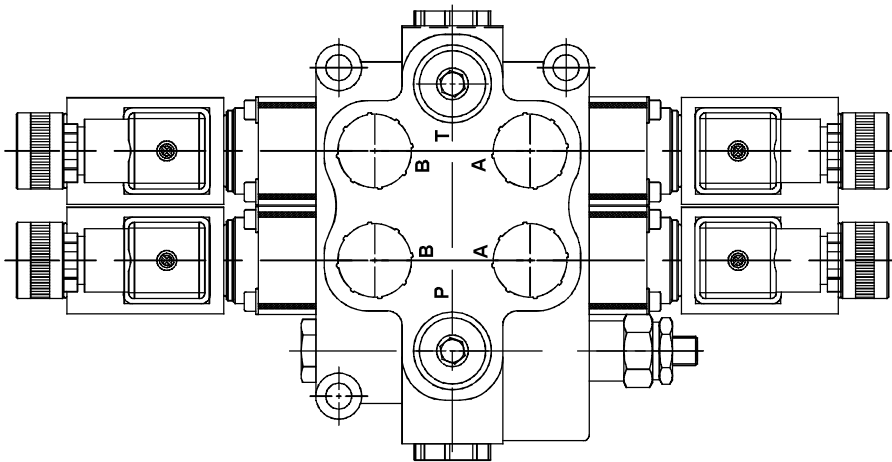
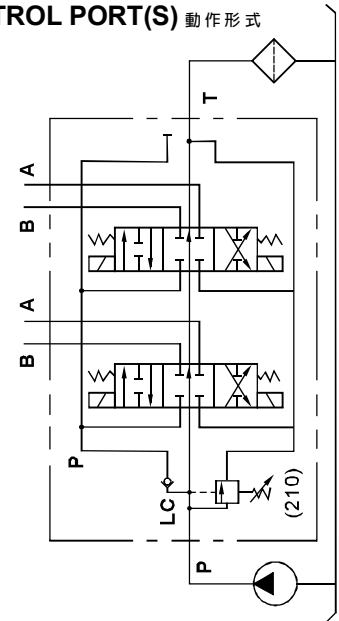


◆ MODEL 型 式

DME-04



◆ CONTROL PORT(S) 動作形式



◆ SPECIFICATIONS 規 格

Model Number 型式號碼	Maximum Pressure 最大壓力 bar	Maximum Flow 最大流量 lpm	Weight 重量 Kg
DME-03-**-**	350 (5075 psi)	45 (11.9gpm)	*
DME-04-**-**	350 (5075 psi)	70 (18.5gpm)	*
Fluid Type 流體型式		ISO VG 32, 46, 68	
Viscosity 黏性 cSt		10~400 (59~1854 SSU)	
Operating Temperature 操作溫度 °C		-30~100 (-22~212°F)	
Contamination Level 污染標準		ISO4406. 21/19/16 NAS1638,10	

● Standard pressure of relief valve sets at 210 bar.
出廠壓力調節閥標準設定最大壓力210bar

※Any request of setting pressure at 350 bar, please inform CW in advance.
※For relief valves, please refer to VRV-03 series.
※如需設定壓力為350bar需先告知 ※調壓閥請參考VRV-03系列

◆ HOW TO ORDER 編號說明

1	2	3	4	5	6	7
DME	04	C2	1N	I*	U*	**

1 VALVE SERIES 系列名稱
DME = Solenoid Stack Valve (Monoblock)
電磁式多路換向閥(單體式)

5 INLET SECTION 入油側
See Page 054
見頁面054

2 SUBPLATE MOUNTING SIZE 稱呼口徑
03 = G3/8" 04 = G1/2"

6 OUTLET SECTION 出油側
See Page 055
見頁面055

3 SPOOL TYPES 滑柱型式
See Page 053
見頁面053

7 TYPE OF COIL 電磁線圈類型
D1: DC12V D2: DC24V

4 NUMBER OF VALVE BLOCKS 連數
1N~7N = 1~7 Blocks

STACK VALVE

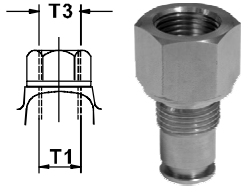
DME SERIES

多路換向閥系列

◆ DIMENSIONS 外型尺寸圖

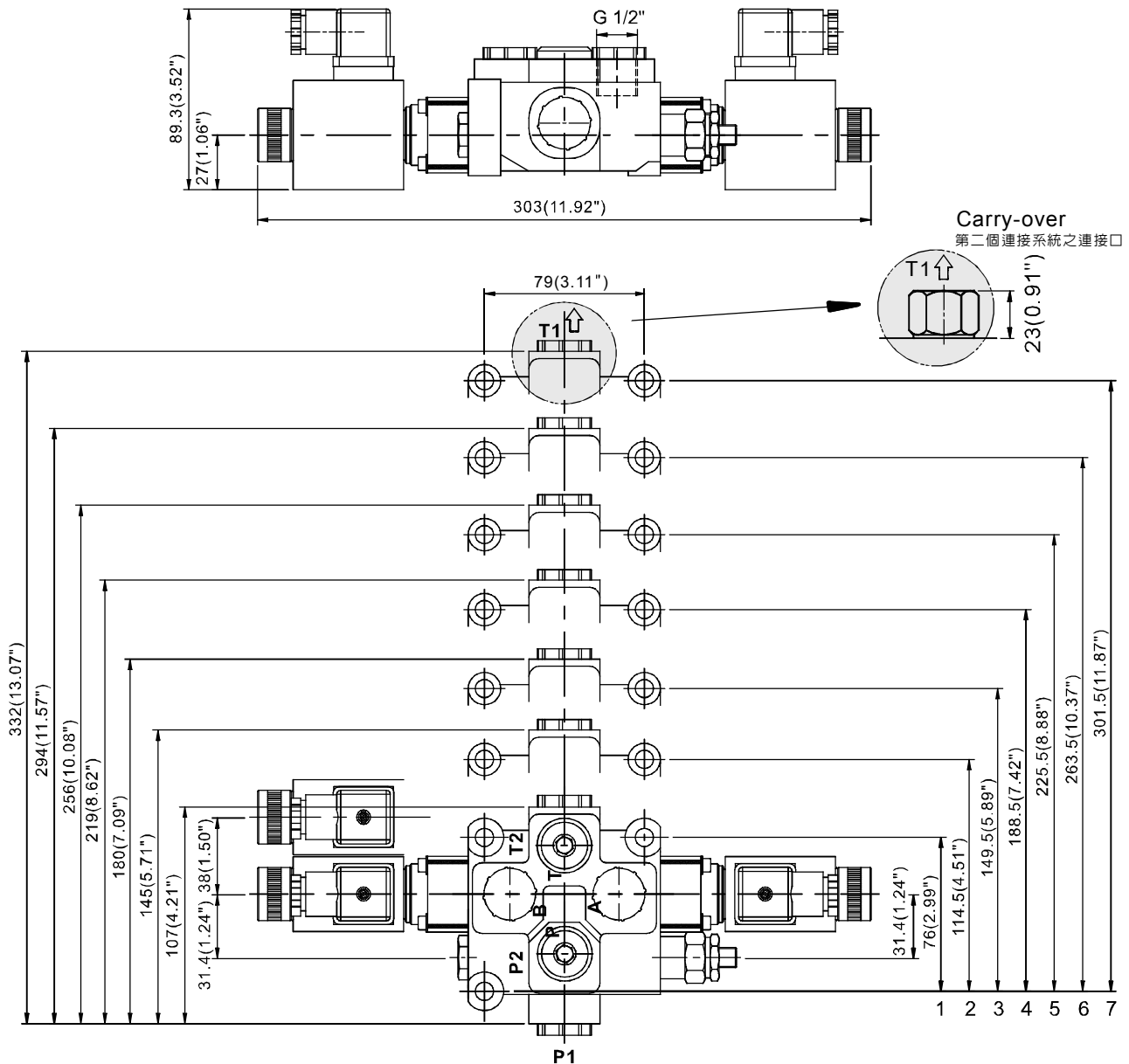
● CONNECTOR (on T1 Port)

轉接頭 (接口在T1)



T1	T3	Purchasing No 訂貨編號
G 1/2"	G 1/2"	COG12
G 1/2"	G 1/2"	

※Optional Accessory
※特別附件



◆ AVAILABLE THREADS 通用螺紋

PORTS 閥口	P1	P2	A-B	T1	T2
DME-03-**-**	G 1/2"	G 3/8"	G 3/8"	G 1/2"	G 3/8"
DME-04-**-**	G 1/2"	G 1/2"	G 1/2"	G 1/2"	G 1/2"