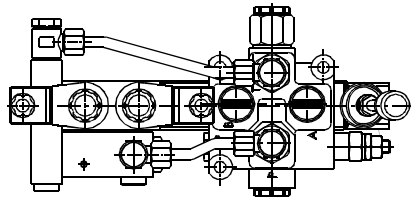
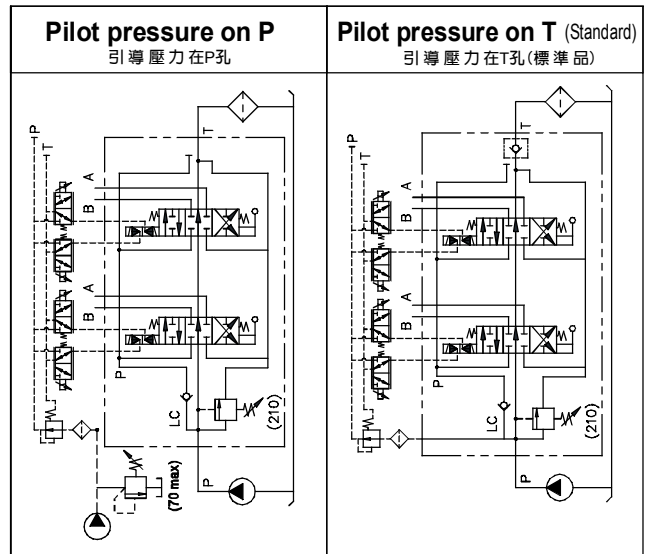


MODEL 型式

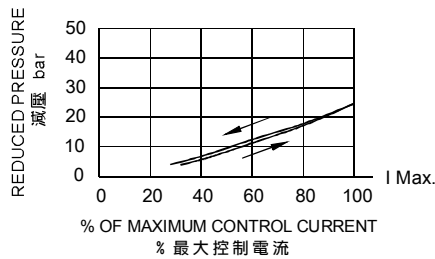
EDMD-04



CONTROL PORT(S) 動作形式



PERFORMANCE 特性曲線



SPECIFICATIONS 規格

Model Number 型式號碼	Maximum Pressure 最大壓力 bar	Maximum Flow 最大流量 lpm	Recommended PWM frequency 推薦 PWM 頻率 Hz	Weight 重量 Kg
EDMD-03-**-**	350 (5075 psi)	45 (11.9gpm)	120~150	*
EDMD-04-**-**	350 (5075 psi)	70 (18.5gpm)	120~150	*
EDMD-06-**-**	-	-	-	-
Fluid Type 流體型式			ISO VG 32, 46, 68	
Viscosity 黏性 cSt			10~400 (59~1854 SSU)	
Operating Temperature 操作溫度 °C			-30~100 (-22~212°F)	
Contamination Level 污染標準			ISO4406. 21/19/16 NAS1638,10	

Standard pressure of relief valve sets at 210 bar.

出廠壓力調節閥標準設定最大壓力210bar

※Any request of setting pressure at 350 bar, please inform CW in advance.

※For relief valves, please refer to VRV-03, VNE-60 series.

※如需設定壓力為350bar需先告知 ※調壓閥請參考VRV-03, VNE-60系列

HOW TO ORDER 編號說明

1	2	3	4	5	6	7	8	9
EDMD	04	C	2	1N	F*	I*	T	**

1 VALVE SERIES 系列名稱

EDMD = Proportional Pilot Solenoid Stack Valve (Monoblock)

比例引導式電磁多路換向閥(單體式)

2 SUBPLATE MOUNTING SIZE 稱呼口徑

03 = G3/8" 04 = G1/2" 06 = G3/4"

3 MODEL 型式

C: Spring Type 彈簧式

4 SPOOL TYPES 滑柱型式

See Page 053
見頁面053

5 NUMBER OF VALVE BLOCKS 連數

1N~7N = 1~7 Blocks

6 CONTROL PORT (FRONT COVER) 控制端(前蓋)

F* : Control Type 控制型式

See Page 058-059

見頁面058-059

None : Standard Type 無:標準型式

7 INLET SECTION 入油側

See Page 054

見頁面054

8 PILOT OPERATED WAY 引導壓方式

T : Pilot pressure on T (Standard) 引導壓力在T孔(標準品)

P : Pilot pressure on P (External) 引導壓力在P孔(外部)

9 TYPE OF COIL 電磁線圈類型

D1 : DC12V D2 : DC24V

● Coils refer to COB08 線圈請參考COB08

※If the products need to be assembled reversely, please advice CW in advance. The code of reverse is "L"

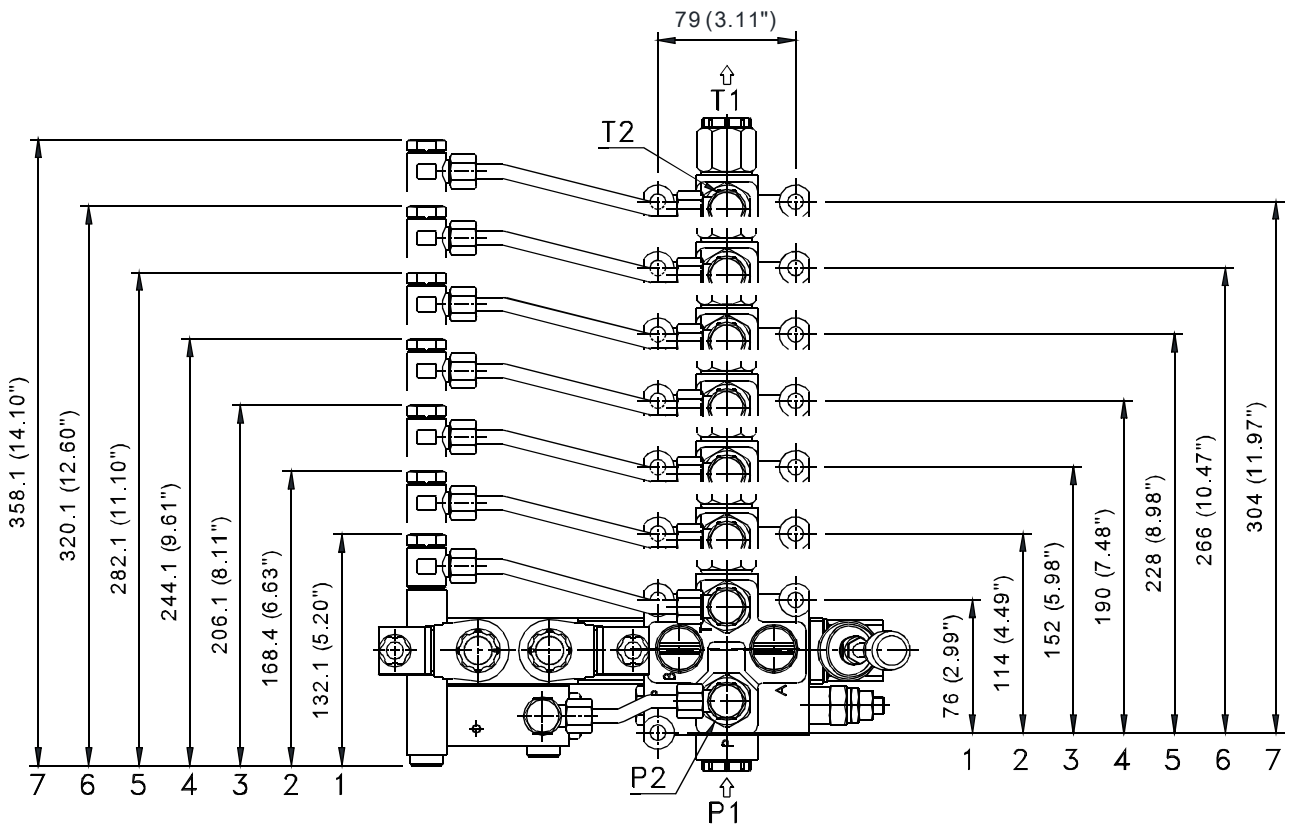
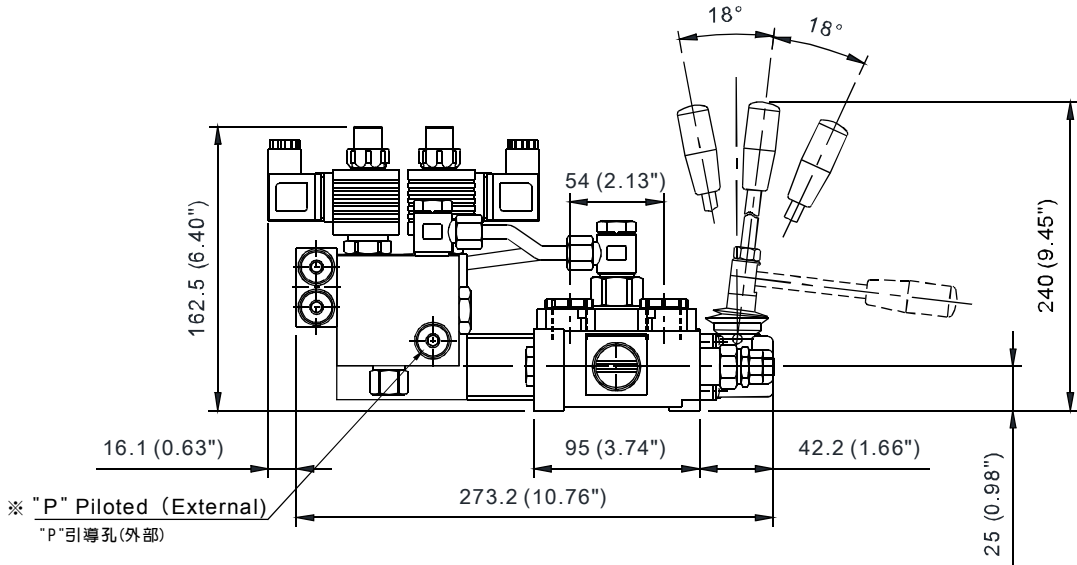
※產品需逆組裝請先告知佳王, 逆組裝代號為"L"。

STACK VALVE

EDMD SERIES (PROPORTIONAL TYPE)

多路換向閥系列 (比例式)

◆ DIMENSIONS 外型尺寸圖



◆ AVAILABLE THREADS 適用螺紋

PORTS 閥口	P1	P2	A-B	T1	T2
EDMD-03-**-**	G 1/2"	G 3/8"	G 3/8"	G 1/2"	G 3/8"
EDMD-04-**-**	G 1/2"	G 1/2"	G 1/2"	G 1/2"	G 1/2"