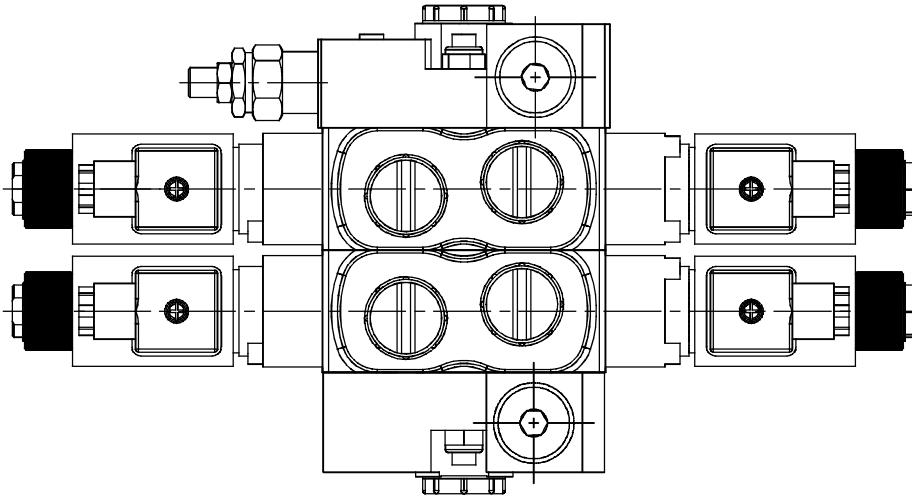
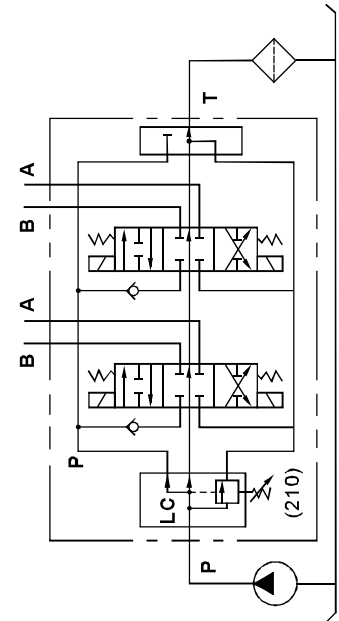


◆ MODEL 型 式

### DMF-04



◆ CONTROL PORT(S) 動作形式



◆ SPECIFICATIONS 規 格

Model Number 型式號碼	Maximum Pressure 最大壓力 bar	Maximum Flow 最大流量 lpm	Weight 重量 Kg
DMF-03-**-**	350 (5075 psi)	45 (11.9gpm)	*
DMF-04-**-**	350 (5075 psi)	70 (18.5gpm)	*
<b>Fluid Type 流體型式</b>		ISO VG 32 , 46 , 68	
<b>Viscosity 黏性 cSt</b>		10~400 (59~1854 SSU)	
<b>Operating Temperature 操作溫度 °C</b>		-30~100 (-22~212°F)	
<b>Contamination Level 污染標準</b>		ISO4406. 21/19/16 NAS1638,10	

● Standard pressure of relief valve sets at 210 bar.  
出廠壓力調節閥標準設定最大壓力210bar

※Any request of setting pressure at 350 bar, please inform CW in advance.  
※For relief valves, please refer to VRV-03 series.  
※如需設定壓力為350bar需先告知 ※調壓閥請參考VRV-03系列

◆ HOW TO ORDER 編號說明

<b>1</b>	<b>2</b>	<b>3</b>	<b>4</b>	<b>5</b>	<b>6</b>	<b>7</b>	<b>8</b>
DMF	— 04 —	C2	1N	— V* —	I*	— U* —	**

**1 VALVE SERIES** 系列名稱  
DMF = Solenoid Stack Valve (Sectional)  
電磁式多路換向閥(片式)

**5 BUILT-IN CARTRIDGE VALVES** 嵌入的插式閥  
See Page 056-057  
見頁面056-057

**2 SUBPLATE MOUNTING SIZE** 稱呼口徑  
03 = G3/8" 04 = G1/2"

**6 INLET SECTION** 入油側  
See Page 054  
見頁面054

**3 SPOOL TYPES** 滑柱型式  
See Page 053  
見頁面053

**7 OUTLET SECTION** 出油側  
See Page 055  
見頁面055

**4 NUMBER OF VALVE BLOCKS** 連數  
1N~7N = 1~7 Blocks

**8 TYPE OF COIL** 電磁線圈類型  
D1: DC12V D2: DC24V

# STACK VALVE

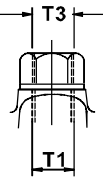
## DMF SERIES

多路換向閥系列

### ◆ DIMENSIONS 外形尺寸圖

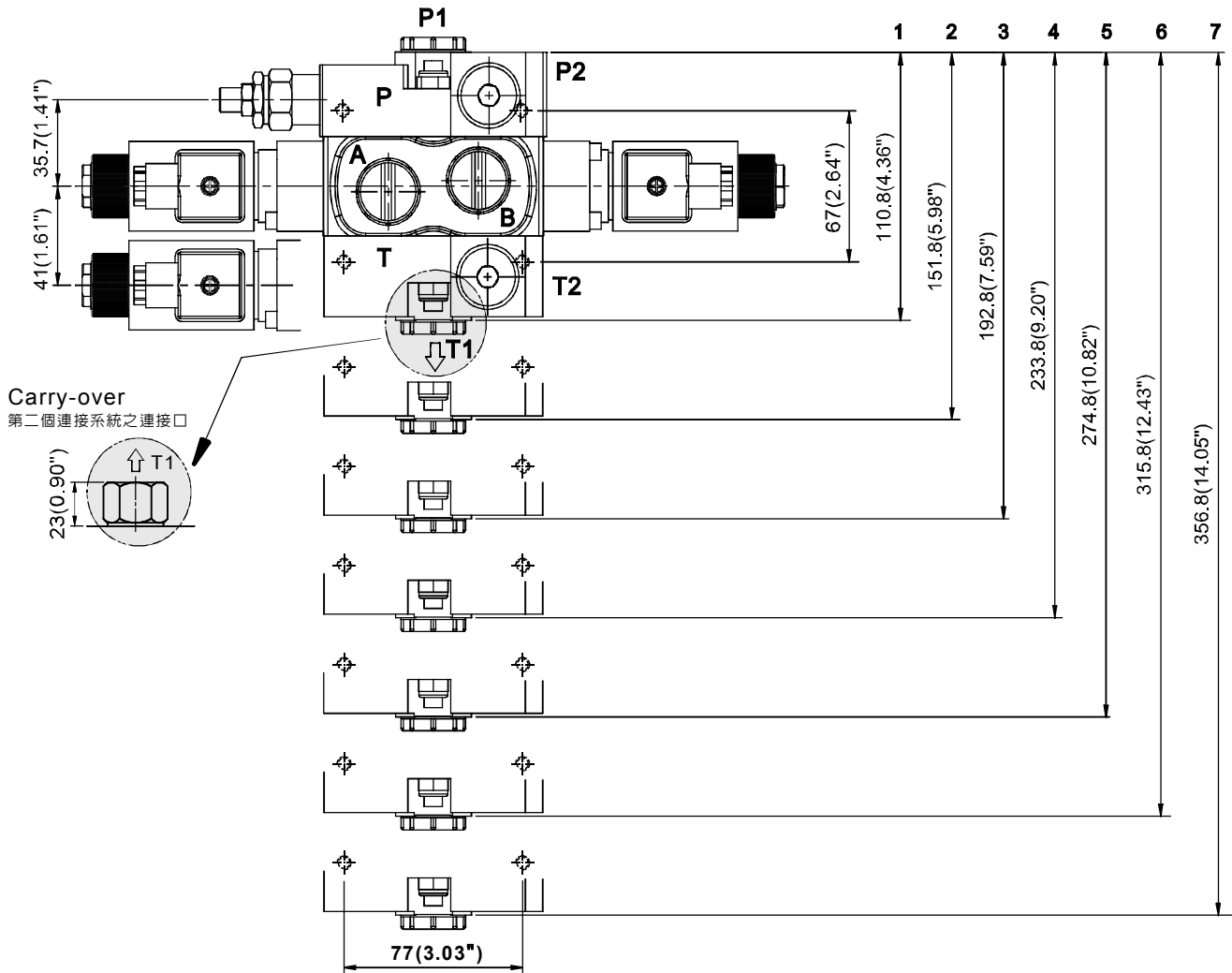
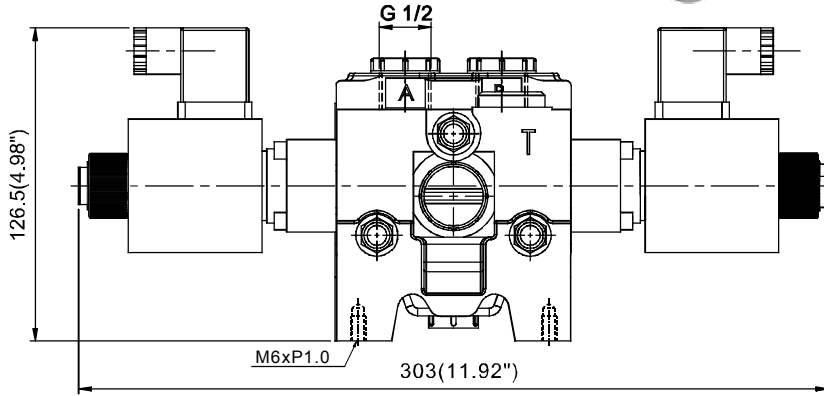
### ● CONNECTOR (on T1 Port)

轉接頭 (接口在 T1)



T1	T3	Purchasing No 訂貨編號
G 1/2"	G 1/2"	COG12
G 1/2"	G 1/2"	

※Optional Accessory  
※特別附件



### ◆ AVAILABLE THREADS 適用螺紋

PORTS 閥口	P1	P2	A-B	T1	T2
DMF-03-**-**	G 1/2"	G 1/2"	G 3/8"	G 1/2"	G 1/2"
DMF-04-**-**	G 1/2"	G 1/2"	G 1/2"	G 1/2"	G 1/2"