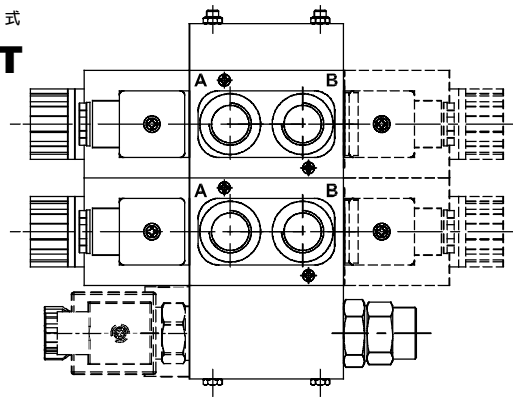
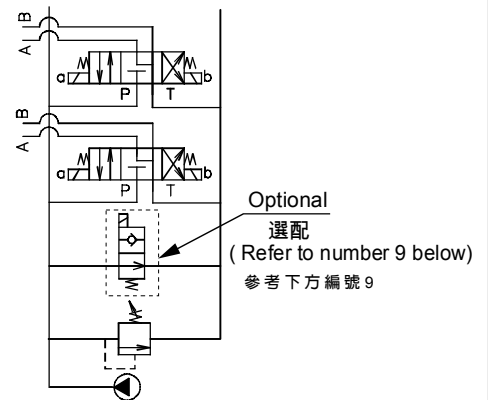


MODEL 型式

DMW-02T



CONTROL PORT(S) 動作形式



SPECIFICATIONS 規格

Model Number 型式號碼	Maximum Pressure 最大壓力 bar	Maximum Flow 最大流量 lpm	Weight 重量 Kg
DMW-02T	250 (3625 psi)	70 (18.5 gpm)	*
Fluid Type 流體型式		ISO VG 32, 46, 68	
Viscosity 黏性 cSt		10~400 (59~1854 SSU)	
Operating Temperature 操作溫度 °C		-30~100 (-22~212°F)	
Contamination Level 污染標準		ISO4406. 21/19/16 NAS1638,10	

Model Number 型式號碼	Rated Current 額定電流 mA	Voltage 電壓 VDC
DMW-02T-CE28	2000±200	12
DMW-02T-E28	1000±100	24

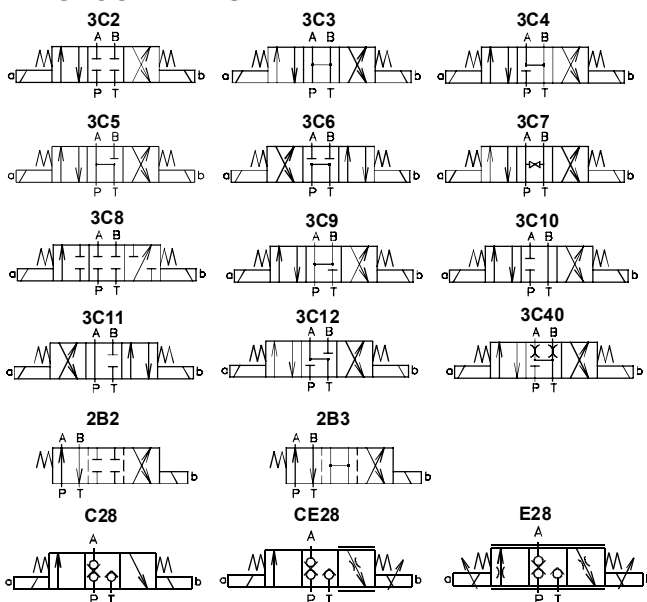
● Standard pressure of relief valve sets at 210 bar.
出廠壓力調節閥標準設定最大壓力210bar

HOW TO ORDER 編號說明

1	2	3	4	5	6	7	8	9
DMW	***	02	T	**	*	1N	S1	NO

1 VALVE SERIES 系列名稱
DMW = Solenoid Stack Valve(Sectional)
電磁式多路換向閥(片式)

2 SPOOL TYPES 滑柱型式



3 SUBPLATE MOUNTING SIZE 稱呼口徑
02=1/4"(6mm) ISO CETOP3
DIN NG 6 NFPA D03

4 CONNECTING TYPE 連接型式
T: Threading Type (G3/8") 螺紋連接(G3/8")

5 TYPE OF COIL 電磁閥電磁線圈類型
A115 : AC115 50HZ/60HZ D1 : DC12
A230 : AC230 50HZ/60HZ D2 : DC24
※ Type Of Coil Model number 線圈型式編號 : COD02

6 WIRING TYPE 接線型式
Non: Wiring Box Type(DIN) X : Double Lead
無:接線盒式(DIN) 雙接線方式

7 NUMBER OF VALVE BLOCKS 連數
1N~7N = 1~7 Blocks

8 INLET SECTION WITH RELEASE VALVE (OPTIONAL) 入油側釋壓閥(選配)
S1:DC12V S2:DC24V
S3:RAC110V S4:RAC220V

9 INLET SECTION WITH RELEASE VALVE 入油側附釋壓閥

Standard 標準型	NO normally open 常開	NC normally close 常閉
NONE None : Standard 無 : 標準型	NO 	NC

※ Type Of Coil Model number 線圈型式編號 : COD08

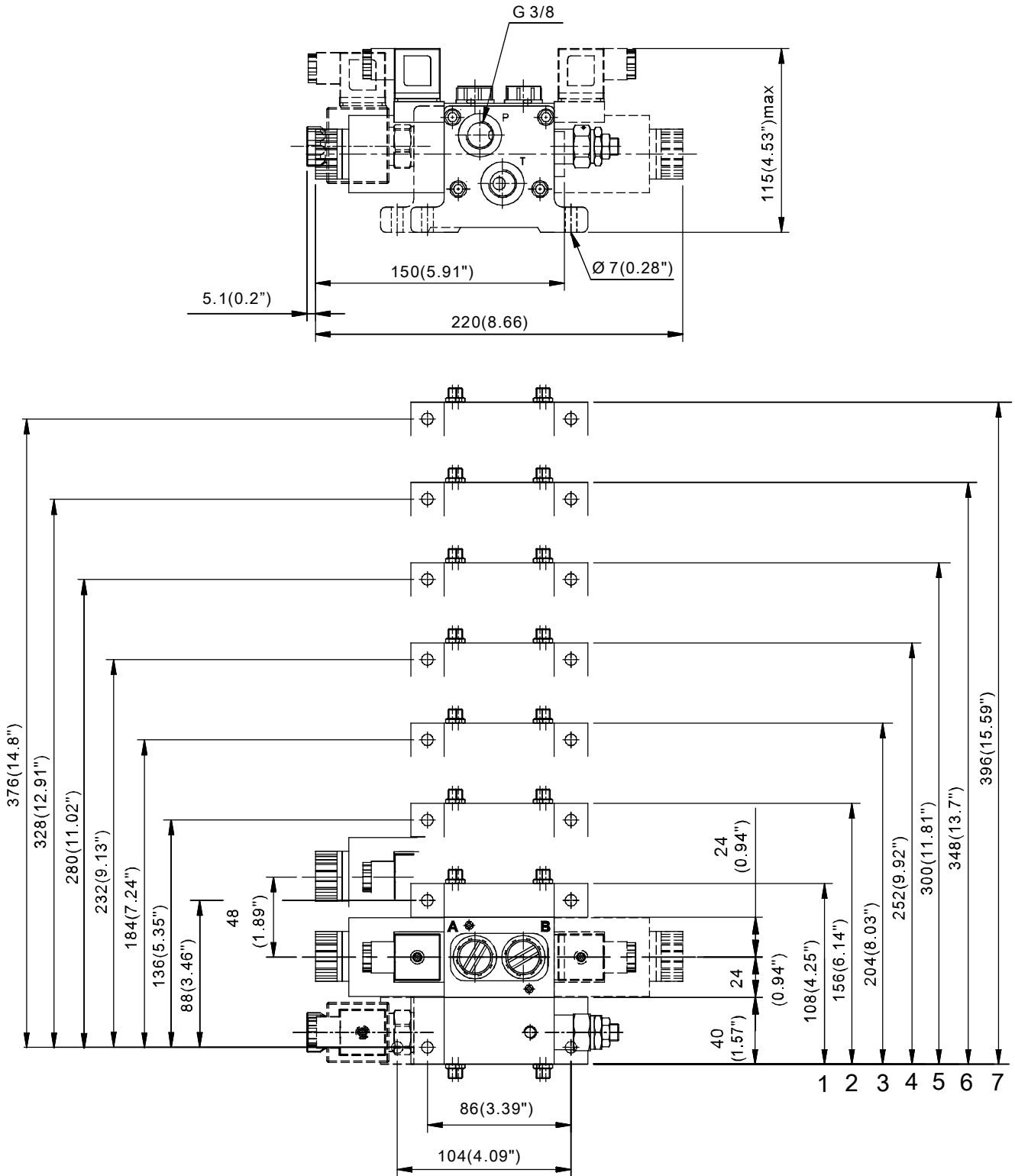
● About Coil See Cartridge Type Valves Catalog : Appendixes-D
關於線圈見插式閥目錄:附錄 D

STACK VALVE

DMW SERIES

多路換向閥系列

◆ DIMENSIONS 外型尺寸圖



◆ AVAILABLE THREADS 通用螺紋

PORTS 閘口	P	A-B	T
DMW-02T-**-**	G 3/8"	G 3/8"	G 3/8"