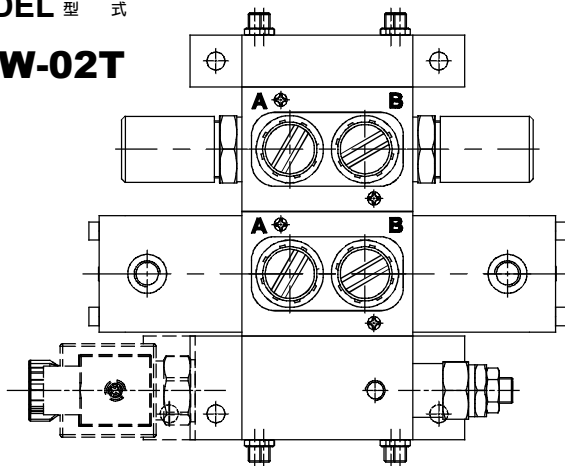
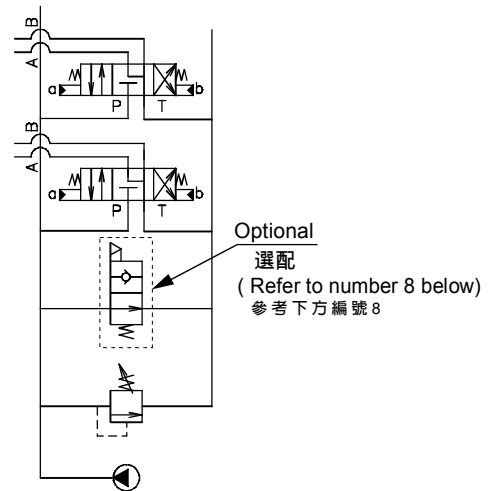


◆ MODEL 型 式

DSW-02T



◆ CONTROL PORT(S) 動作形式



◆ SPECIFICATIONS 規 格

Model Number 型式號碼	Maximum Pressure 最大壓力 bar	Maximum Piloted Pressure 最大引導壓力 Bar	Maximum Flow 最大流量 lpm	Weight 重量 Kg
DSW-02T-A	250 (3625 psi)	3~12	70 (18.5 gpm)	*
DSW-02T-B		250		*
Fluid Type 流體型式		ISO VG 32, 46, 68		
Viscosity 黏性 cSt		10~400 (59~1854 SSU)		
Operating Temperature 操作溫度 °C		-30~100 (-22~212°F)		
Contamination Level 污染標準		ISO4406. 21/19/16 NAS1638,10		

● Standard pressure of relief valve sets at 210 bar. 出廠壓力調節閥標準設定最大壓力210bar

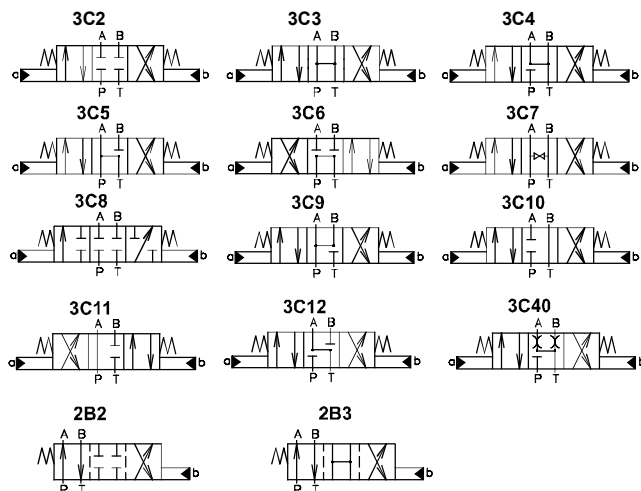
◆ HOW TO ORDER 編號說明

1	2	3	4	5	6	7	8
DSW	***	02	T	*	1N	S1	NO

1 VALVE SERIES 系列名稱

DSW = Pilot Stack Valve(Sectional)
導引式多路換向閥(片式)

2 SPOOL TYPES 滑柱型式



3 SUBPLATE MOUNTING SIZE 稱呼口徑

02=1/4"(6mm) ISO CETOP3
DIN NG 6 NFPA D03

4 CONNECTING TYPE 連接型式

T: Threading Type (G3/8") 螺紋連接(G3/8")

5 PILOTED WAY 導引方式

A: Pneumatic Piloted (空壓導引)
B: Hydraulic Piloted (液壓導引)

6 NUMBER OF VALVE BLOCKS 連數

1N~5N= 1~5 Blocks

7 INLET SECTION WITH RELEASE VALVE (OPTIONAL) 入油側釋壓閥(選配)

S1:DC12V S2:DC24V
S3:RAC110V S4:RAC220V

8 INLET SECTION WITH RELEASE VALVE 入油側附釋壓閥

Standard 標準型	NO normally open 常開	NC normally close 常閉
NONE	NO	NC
None : Standard 無 : 標準型		

※ Type Of Coil Model number 線圈型式編號 : COD08

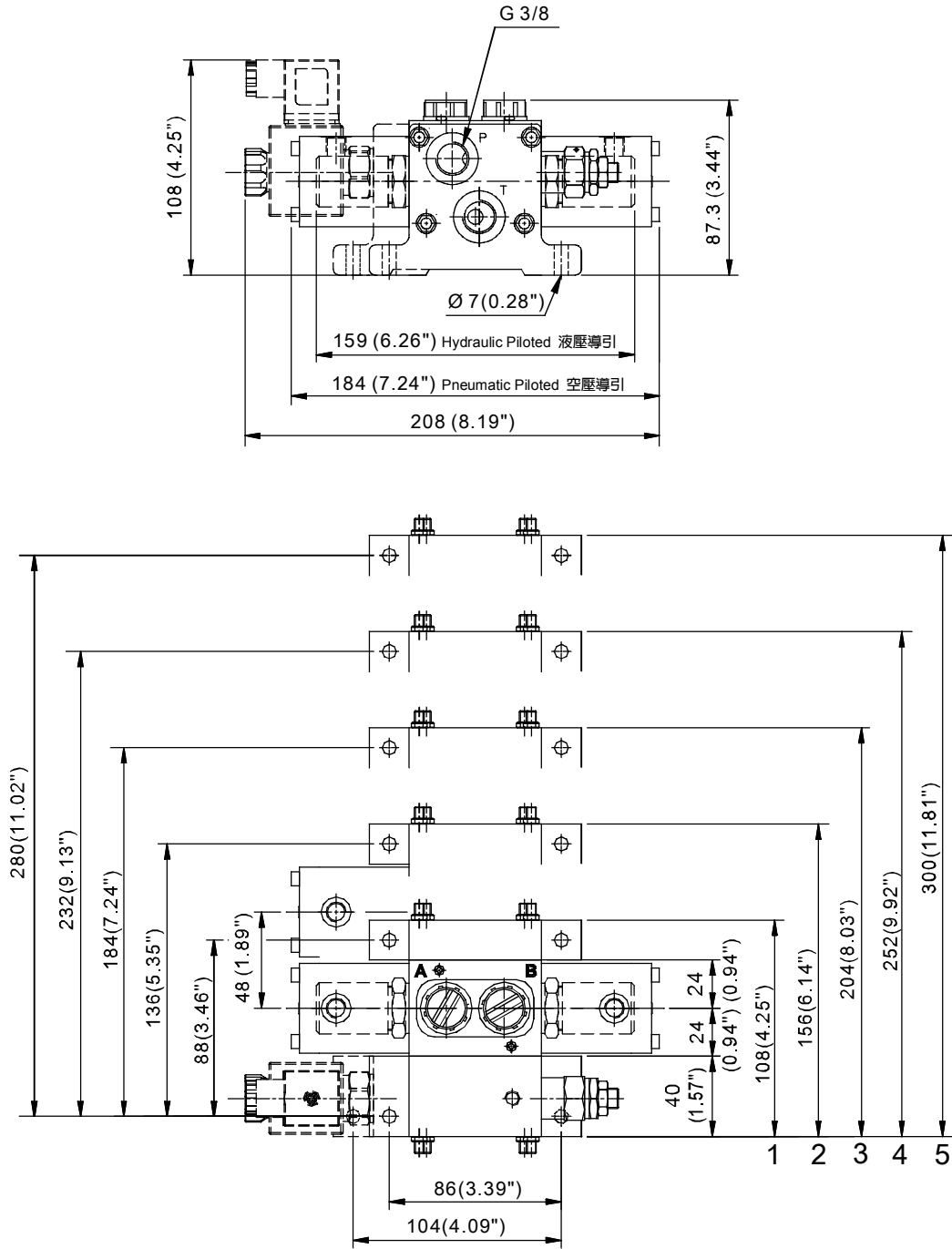
● About Coil See Cartridge Type Valves Catalog : Appendixes-D
關於線圈見插式閥目錄:附錄 D

STACK VALVE

DSW SERIES

多路換向閥系列

◆ DIMENSIONS 外型尺寸圖



◆ AVAILABLE THREADS 通用螺紋

PORTS 閘口	P	A-B	T
DSW-02T-**-**	G 3/8"	G 3/8"	G 3/8"