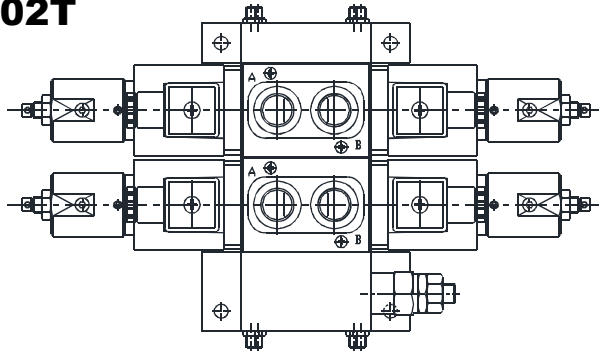
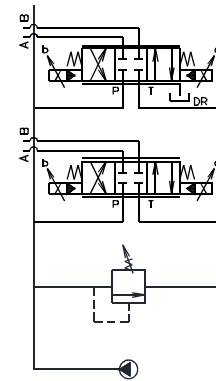


◆ MODEL 型 式

EDMW-02T



◆ CONTROL PORT(S) 動作形式



◆ HANDING DESCRIPTION 使用說明

- Air Bleeding :** In order to ensure stable control , loosen the air vent and bleed air from the valve before starting operation.
- Manual Adjusting Screw :**
For the initial adjustment or when there is no input current to the valve due to an electrical problem or reason, the valve can be operated and valve pressure can be increased by rotating the manual adjustment screw clockwise (rightward). Normally, the manual adjusting screw should be rotated back fully to the left (counterclockwise) and secured the lock nut.
- Valve Mounting Orientation :** Install the valve so the spool axis line is horizontal.
 - 排出空氣 : 要穩定的進行控制, 須轉鬆排氣孔排出空氣.
 - 手動調整螺栓 :
初期調整或因電氣故障等原因閥中無輸入電流時, 通過手動調整螺栓向右轉動驅動閥可增加流量. 平時必須把手動調整螺栓向左全部轉回原位置, 並鎖緊螺母.
 - 閥的安裝方向 : 滑閥軸線成水平安裝.

◆ SPECIFICATIONS 規 格

Model Number 型式號碼	Maximum Pressure 最大壓力 Bar	T Part Allowable back Pressure T口容許背壓 bar	Flow Rate 流量 lpm	Rated Current 額定電流 mA	Coil Resistance 線圈阻抗 Ω	Hysteresis 磁滯性 %	Voltage 電壓 VDC	Response Time 反應時間 S	Weight 重量 Kg
EDMW-02	255 (3698 psi)	250 (3625 psi)	Rated flow Rate 額定流量 20 (5.28 gpm)	850	20 (20°C)	5 max. 以下	24	0.04 (Note 1) 註1	*
			Maximum Flow 最大流量 25 (6.60 gpm)						
Fluid Type 流體型式			ISO VG 32, 46, 68						
Viscosity 黏性 cSt			10~400 (59~1854 SSU)						
Operating Temperature 操作溫度 °C			-30~100 (-22~212°F)						
Contamination Level 污染標準			ISO4406. 21/19/16 NAS1638,10						
Surface Treatment 表面處理			Zinc Phosphate Compound 鋅 磷酸鹽 化合物						

NOTE)1. The response time is given by the supplying pressure of 143 bar (2074.07 psi) and oil temperature at 40°C (kinematic viscosity : 40 cSt). 註)1. 反應時間是供給壓力143 bar (2074.07 psi) 油溫40°C (黏性在40cSt).

● Standard pressure of relief valve sets at 210 bar. 出廠壓力調節閥標準設定最大壓力210bar

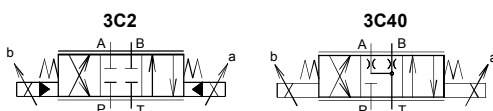
◆ HOW TO ORDER 編號說明

1	2	3	4	5	6	7	8
EDMW	***	02	T	**	*	2N	Y

1 VALVE SERIES 系列名稱

EDMW = Proportional Solenoid Stack Valve
(Sectional)
比例電磁式多路換向閥(片式)

2 SPOOL TYPES 滑柱型式



3 SUBPLATE MOUNTING SIZE 稱呼口徑

02=1/4"(6mm) ISO CETOP3
DIN NG 6 NFPA D03

4 CONNECTING TYPE 連接型式

T: Threading Type (G3/8") 螺紋連接(G3/8")

5 TYPE OF COIL 電磁閥電磁線圈類型

D2:DC24

6 WIRING TYPE 接線型式

Non:Wiring Box Type(DIN) 無:接線盒式(DIN)

7 NUMBER OF VALVE BLOCKS 通數

1N~7N = 1~7 Blocks

8 ADJUSTMENT OPTION 調整選擇

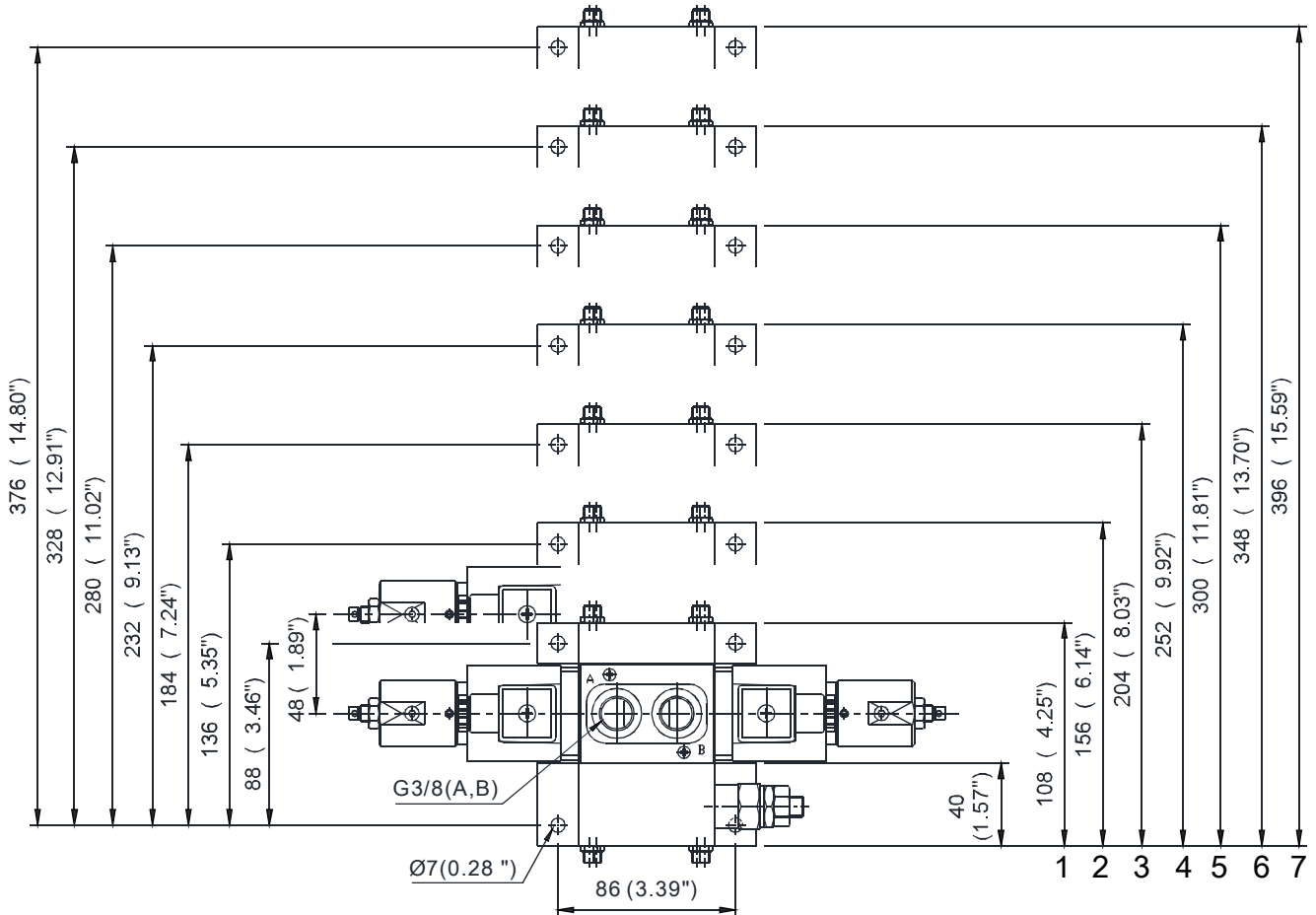
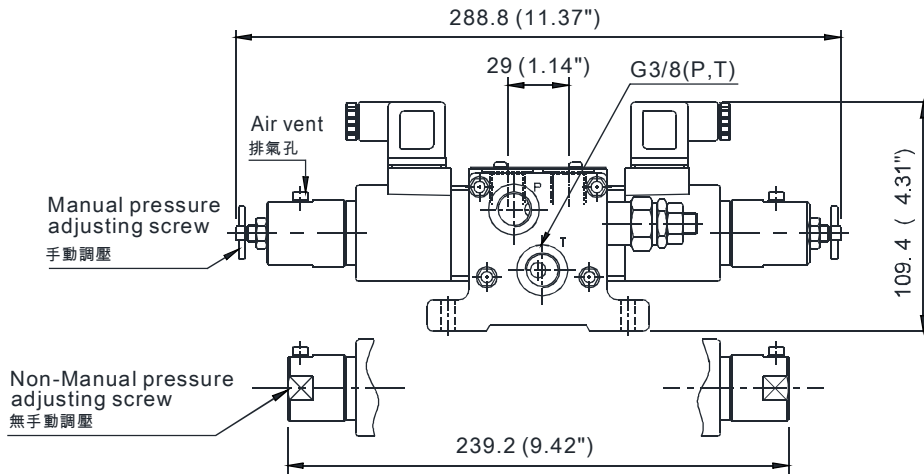
Non:Standard 無:標準型
Y:Manual adjusting Y:手動調整

STACK VALVE

EDMW SERIES (PROPORTIONAL TYPE)

多路換向閥系列 (比例式)

◆ DIMENSIONS 外型尺寸圖



◆ AVAILABLE THREADS 通用螺紋

PORTS 閥口	P	A-B	T
EDMW-02T-**-**	G 3/8"	G 3/8"	G 3/8"